

Note on English translation / Hinweise zur englischen Fassung

This is a translation of the technical data sheet valid in Germany.

All stated details and properties are in compliance with the regulations of the German standards and building regulations. They are only applicable for the specified products, system components, application rules, and construction details in connection with the specifications of the respective certificates and approvals.

Knauf Gips KG denies any liability for applications outside of Germany as this requires changes acc. to the respective national standards and building regulations.

Drywall Systems

E112.de

Product Data Sheet

2018-05



REVO 12.5

Access panel for wall and ceiling systems

Product description

Access panel for installation in walls and in suspended ceilings without building physics requirements.

REVO 12.5 consists of:

- Anodised aluminium outer frame
- Openable and fully detachable hatch
- Flush adhesively bonded gypsum board Diamant GKFI (200 x 200 mm to 600 x 600 mm). Available screw fixed on request.
- With dimensions > 600 mm supplied only as a screw fixed variant, with dimensions > 800 mm supplied only with trimmer profiles

Properties and added value

- All-purpose use for cladding thickness 10 and 12.5 mm
- Can be retrofitted
- Can be tiled

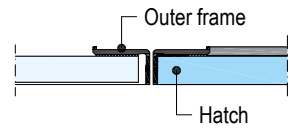
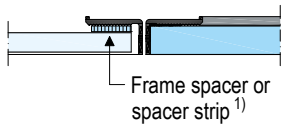
Field of application

All-purpose use for ceilings and walls, e.g.:

- Drywall partitions
- Furrings
- Suspended ceilings

Application

Installation

Cladding	
12.5 mm	
10 mm	

1) Frame spacers or spacer strips are included in the packaging if they have been ordered as accessory equipment.

Notes	
	With rectangular ceiling access panels, the lock and hinge system is always mounted as standard on the long side. With wall mounted access panels, the lock system is always at the top and the hinge system is always at the bottom.
	At least
	<ul style="list-style-type: none"> ■ 2 screws per frame side for hatch size <math>< 500 \times 500 \text{ mm}</math> ■ 3 or 4 screws per frame side for hatch size $\geq 500 \times 500 \text{ mm}</math>$
	Distance between screw centres maximum 200 mm. No joints in the cladding are allowed near the access panels.
	Observe the installation instructions enclosed with the product.
	Apply the ceiling, wall and furring systems in accordance with the respective most current Knauf system data sheets.

Use Schnellbauschrauben TB screws or Diamantschrauben XTB screws for the attachment of the frame to the cladding.

The access panel can be installed together with the grid or when the cladding is applied.

Cut out opening 10 mm (with seal 12 mm) larger than the access panel size (= clearance).

Arrange trimmers made of CD or CW studs/UW runners in accordance with the dimension of the access panel. Maintain distances between cut-out

section and trimmer profiles of at least 30 mm and a maximum of 100 mm. Mount 4 additional suspenders in the corner areas of the access panel when mounting in ceilings.

Additional suspenders are required for trimmers on suspended ceiling profiles. Place outer frame of the access panel in the opening, lay it on the cladding, align and screw attach. Subsequently, insert the hatch and check the lock for proper functioning. If the distance to the installations in the wall or ceiling is <math>< 200 \text{ mm}</math>, it is necessary to perform installation of the outer frame in the gypsum board together with the cladding.

With wall access panels, a clearance of $\geq 30 \text{ mm}$ must be ensured in the upper third of the rear side of the hatch for opening the panel. Depending on the construction type and installation conditions of the access panels trimmers made of profiles are necessary (see scheme drawings).

Subsequent installation possible

The cladding must be sawed out for subsequent installation of the access panel. Apply a frame made of circumferential profile pieces (CD channels or CW studs/UW runners) and screw attach them (screw spacing $\leq 150 \text{ mm}$).

Jointing

Fill outer frame and ceiling or wall surface of access panel with Uniflott. It is not necessary to fill or skim the inner frame to surface quality Q2 with flush adhesively bonded gypsum boards. Fill in screw heads if the hatch is screw fixed. For surface quality level Q3 scrape skim the hatch face. Preparation for quality level Q4 on request.

Cleaning

Clean outer frame, hatch, and in particular, seal thoroughly after filling.

Coatings and linings

Surface treatment of the access panels with gypsum board inlays in acc. with the Knauf System Data Sheet of the relevant system.

Access panel designed for tiling

Only apply the tiles using the thin bed method (max. adhesive thickness + tile 10 mm). Fill joint between cladding and outer frame after installation of the access panel. The edge of the wall tile can be directly applied on the clearance dimension. Insert the seal (available on request).

Note for the painter

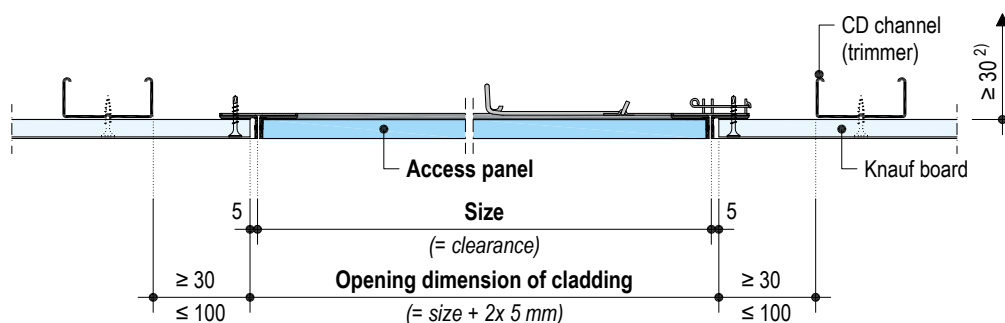
Generally remove the access panel inner frame before painting separately so that no paint penetrates the narrow joint between the hatch and the outer frame.

Installation in the Knauf ceiling systems

E112.de-V1

e.g. Version 12.5 mm – without seal, vertical section

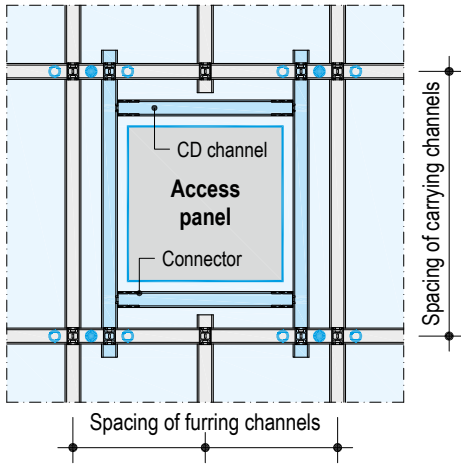
Scheme drawings, all dimensions in mm



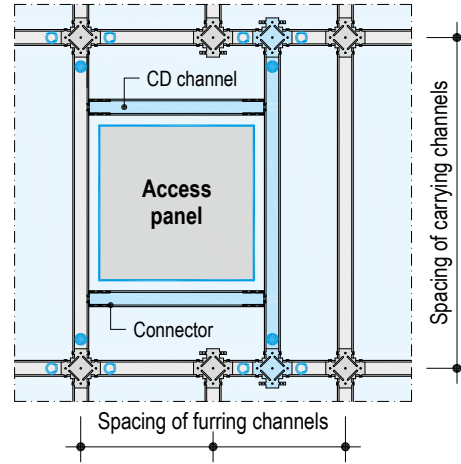
2) Clearance to basic ceiling / installations

Examples, scheme drawings of ceiling installation

Double-level metal grid (e.g. D112.de)



Flush metal grid (e.g. D113.de)



Additional grid

4 additional suspension points (e.g. Nonius suspension)

Alternative suspension points

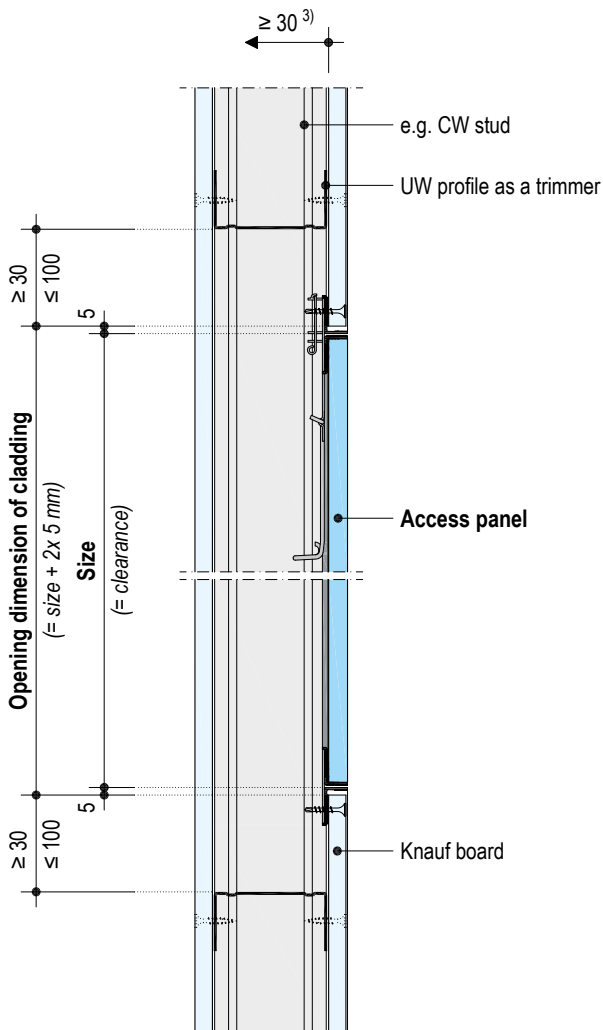
Universal connectors are required for the trimmers. Further suspenders are required if the suspended profiles are to be exchanged.

Installation in the Knauf wall systems

Dimensions in mm

E112.de-V3

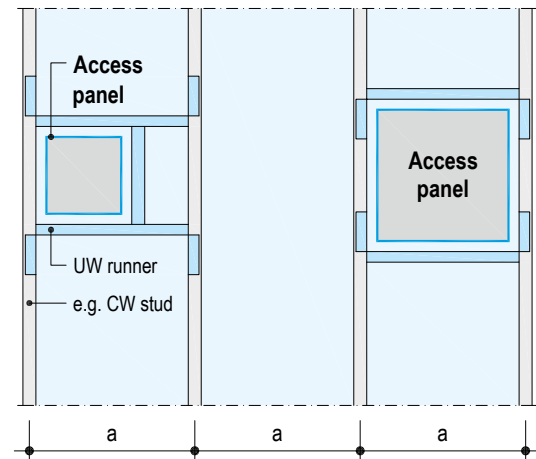
e.g. Partition system, version 12.5 mm – without seal, vertical section



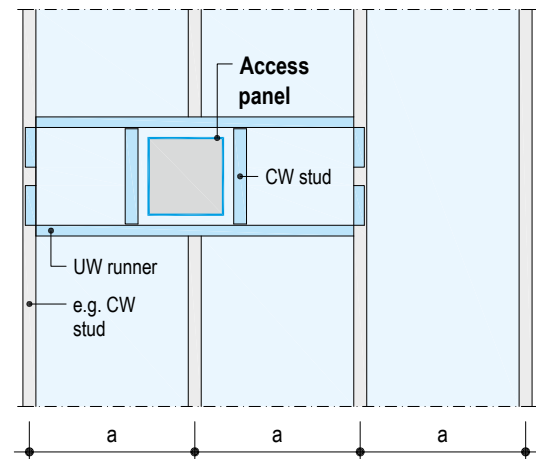
3) Opening displacement clearance of the access panel

Examples, scheme drawings of wall installation

Stud spacing a continuous



Stud spacing a with cut stud and trimmer profiles



Additional grid

Product range

Description	Application	Width x length mm	Weight kg/piece	Packaging unit	Material number	EAN
REVO 12.5	Adhesive bonding	200 x 200	1.2	1 piece / pack	00081522	4003982190529
		300 x 300	2.0		00081524	4003982190567
		400 x 400	3.0		00081525	4003982190581
		500 x 500	4.3		00081526	4003982190604
		600 x 600	5.8		00081527	4003982190628
	Screw fixing	200 x 200	1.2		00154800	4003982214461
		300 x 300	2.0		00154802	4003982214478
		400 x 400	3.0		00154803	4003982214485
		500 x 500	4.3		00154804	4003982214492
		600 x 600	5.8		00154805	4003982214508
		700 x 700	11.0		00218024	4003982226099
		800 x 800	14.0		00218027	4003982226105
		Special ≤ 800			00111872	4003982203823
		Special > 800			00111873	4003982203830

Required specifications for ordering

- Dimension of the access panel (width x length)
- Cladding thickness and board type (also possible for cladding thickness 10 mm)
- Access panel for tiling: Specify tile dimensions (width x height), joint width, adhesive thickness, tile thickness and cladding thickness (The exact clearance is determined by the tile format.)
- Additional options / special designs

Additional options / special designs

- Intermediate dimensions
- Multi-part design
- Airtight and dust-proof access panel (EN 1026+12207 class 3, suction and pressure)
- Four-square bolt
- Round cylinder lock
- Lock designed for profile cylinder
- Screw fixed gypsum board Diamant GKFI for on-site exchange (≤ 600 x 600 mm)
- Designed for on-site creation of surface quality level Q4
- Prepared for on-site tiling
- Spacer strips for 10 mm cladding



The iPad App Knauf Infothek now provides all the current information and documents from Knauf Gips KG at any time and in every location in a clear and comfortable way.

[Knauf Infothek](#)

Knauf Direct

Technical Advisory Service:

▶ knauf-direkt@knauf.de

▶ www.knauf.de

Knauf Gips KG Am Bahnhof 7, 97346 Iphofen, Germany

All technical changes reserved. Only the current printed instructions are valid. The stated information represents current state-of-the-art Knauf technology. The entire state of approved engineering rules, appropriate standards, guidelines, and rules of craftsmanship are not included herewith. These and all application instructions have to be adhered to separately by the installer. Our warranty is expressly limited to our products in flawless condition. All application quantities and delivery amounts are based on empirical data that are not easily transferable to other deviating areas.

All rights reserved. All amendments, reprints and photocopies, including those of excerpts, require our expressed permission.