

KNAUF STANDARD DETAILS

DRAWING NO: KSD25-0014



DETAIL TITLE: DOOR JAMB ARRANGEMENT FOR DOOR LEAF WEIGHT OF **UP TO 35KG AND**
PARTITION HEIGHTS UP TO 5M, ISOMETRIC

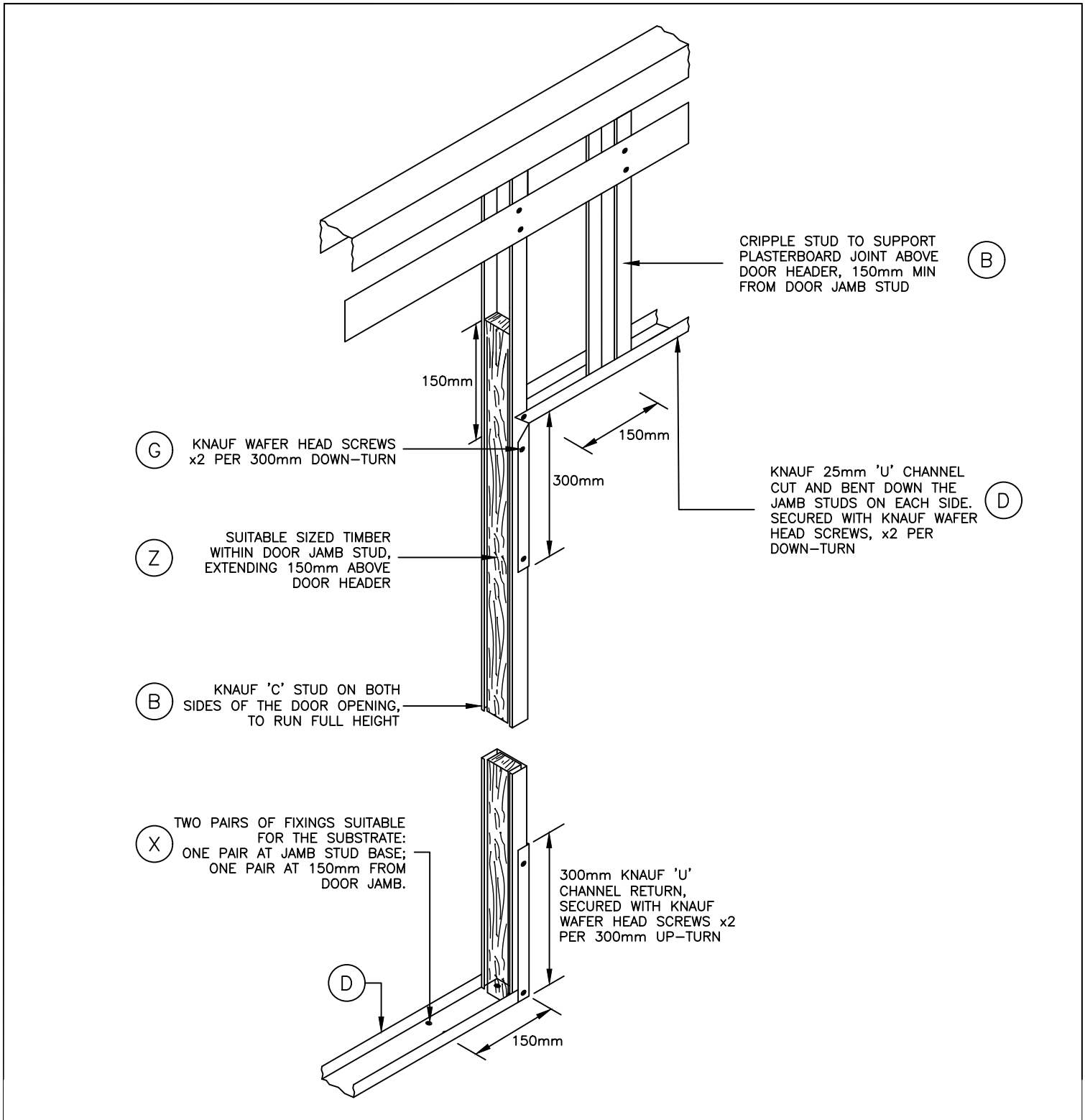
REVISION:

ISSUE DATE: JUNE 2025

SCALE: NTS

DRAWN BY:
TECHNICAL

APPROVED BY: TMT



A	KNAUF PLASTERBOARD, TO SUIT SPECIFICATION	H	KNAUF COREBOARD	O	KNAUF PLASTERBOARD FILLET, TO SUIT DEFLECTION ALLOWANCE AND SPECIFICATION	V	KNAUF STAGGERED STUD CLIP, TO SUIT SPECIFICATION
B	KNAUF 'C' OR 'I' STUD, TO SUIT SPECIFICATION	I	KNAUF INSULATION, TO SUIT SPECIFICATION	P	KNAUF PUTTY PAD	W	KNAUF MOVEMENT CONTROL JOINT
C	KNAUF 'C' STUD	J	KNAUF DEFLECTION HEAD FIRE SEAL, TO SUIT SPECIFICATION	Q	KNAUF 25 X 25MM ANGLE SECTION	X	FIXINGS BY OTHERS, SUITABLE FOR SUBSTRATE
D	KNAUF 'U' CHANNEL, TO SUIT SPECIFICATION	K	KNAUF INTUMESCENT AND ACOUSTIC MASTIC	R	KNAUF 25 X 50MM ANGLE SECTION	Y	PLYWOOD, TO SUIT SPECIFICATION, BY OTHERS
E	KNAUF DEEP FLANGE 'U' CHANNEL, TO SUIT SPECIFICATION	L	KNAUF JOINTING RANGE	S	KNAUF FINISHING RANGE	Z	SHAPED TIMBER GROUND, TO SUIT SPECIFICATION, BY OTHERS
F	KNAUF DRYWALL SCREW, TO SUIT SPECIFICATION, AT 300MM C/C	M	KNAUF FLAT FIXING PLATE, TO SUIT SPECIFICATION	T	KNAUF INSULATION ROCKSILK RS60	-	-
G	KNAUF WAFER HEAD SCREW, TO SUIT SPECIFICATION	N	KNAUF COREBOARD CHANNEL	U	KNAUF RESILIENT BAR, TO SUIT SPECIFICATION	-	-

- KNAUF COMPONENTS FORMING KNAUF SYSTEM TYPES WHICH HAVE BEEN MODIFIED TO CONSIDER PROJECT SPECIFIC REQUIREMENTS (DESIGN AND INSTALL).
NOTE:
- TYPICAL DETAILS ARE RECOMMENDATIONS ONLY AND DO NOT CONSTITUTE CONSTRUCTION ISSUE DETAILS WHICH REMAIN THE RESPONSIBILITY OF THE PRINCIPAL DESIGNER/CONTRACTOR WHO IS REQUIRED TO TRANSLATE AND SUITABLY INTEGRATE THE DETAILS INTO THE OVERARCHING ARCHITECTURAL DESIGN AND/OR INSTALLATION. THE PRINCIPAL DESIGNER/CONTRACTOR IS REQUIRED TO CONSIDER INTERFACES WITH OTHER SYSTEM TYPES, STRUCTURES, OPENINGS, AND JUNCTIONS WHILST ENSURING THE SITE-SPECIFIC PERFORMANCE STRATEGY IS MET. THESE INCLUDE, BUT ARE NOT LIMITED TO, FIRE, ROBUSTNESS, ACOUSTICS, THERMAL, AIRTIGHTNESS AND MOISTURE RESISTANT FOR THE BUILDING.

Please scan this QR Code to be taken to the Knauf UK Download Centre. Here you will find our latest documentation

For any further Technical support please contact us here;
Technical Support Helpline - 0800 521 050 (Option 2)
Email - Technical-uk@knauf.com



KNAUF STANDARD DETAILS

DRAWING NO: KSD23-0230



DETAIL TITLE: DOOR JAMB ARRANGEMENT FOR DOOR LEAF WEIGHT OF UP TO 60kg, ISOMETRIC

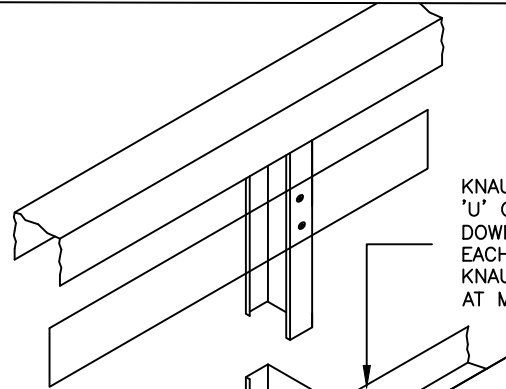
REVISION: A

ISSUE DATE: 17/11/2023

SCALE: NTS

DRAWN BY:
TECHNICAL

APPROVED BY: TMT



KNAUF 70mm DEEP FLANGE 'U' CHANNEL CUT AND BENT DOWN THE JAMB STUDS ON EACH SIDE. SECURED WITH KNAUF WAFER HEAD SCREWS AT MAX. 150mm c/c

(G) KNAUF WAFER HEAD SCREWS
MAX 300mm c/c

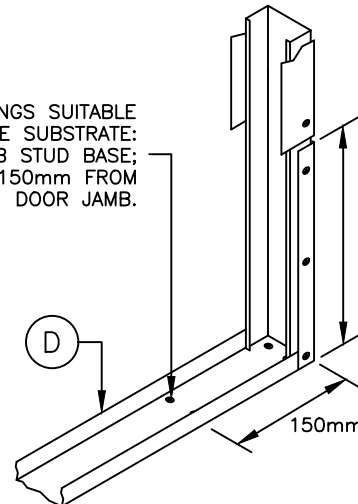
300mm

(E) KNAUF 70mm DEEP FLANGE 'U' CHANNEL TO CLOAK EACH SIDE OF DOOR OPENING. FITTED BETWEEN 'U' CHANNEL RETURNS AT BOTH BASE AND LINTEL

(B) KNAUF 'C' STUD ON BOTH SIDES OF THE DOOR OPENING, TO RUN FULL HEIGHT

(X) TWO PAIRS OF FIXINGS SUITABLE FOR THE SUBSTRATE: ONE PAIR AT JAMB STUD BASE; ONE PAIR AT 150mm FROM DOOR JAMB.

300mm KNAUF 'U' CHANNEL RETURN, SECURED WITH KNAUF WAFER HEAD SCREWS AT MAX 150mm c/c



150mm

A	KNAUF PLASTERBOARD, TO SUIT SPECIFICATION	H	KNAUF COREBOARD	O	KNAUF 2 x 19mm COREBOARD FILLETS	V	KNAUF STAGGERED STUD CLIP, TO SUIT SPECIFICATION
B	KNAUF STUD, TO SUIT SPECIFICATION	I	KNAUF INSULATION, TO SUIT SPECIFICATION	P	KNAUF PUTTY PAD	W	KNAUF MOVEMENT CONTROL JOINT
C	KNAUF 'C' STUD, TO SUIT SPECIFICATION	J	-	Q	KNAUF 25 x 25mm ANGLE SECTION	X	APPROVED FIXING TO MEET SUBSTRATE/LOADING REQUIREMENTS
D	KNAUF 'U' CHANNEL, TO SUIT SPECIFICATION	K	KNAUF INTUMESCENT AND ACOUSTIC MASTIC	R	KNAUF 25 x 50mm ANGLE SECTION	Y	PLYWOOD, TO SUIT SPECIFICATION, BY OTHERS
E	KNAUF DEEP FLANGE 'U' CHANNEL, TO SUIT SPECIFICATION	L	KNAUF JOINTING RANGE	S	KNAUF FINISHING RANGE	Z	SHAPED TIMBER GROUND, TO SUIT SPECIFICATION, BY OTHERS
F	KNAUF SCREW, TO SUIT SPECIFICATION, AT 300mm C/C	M	KNAUF FLAT FIXING PLATE, TO SUIT SPECIFICATION	T	KNAUF INSULATION ROCKSILK® RS60	-	-
G	KNAUF WAFER HEAD SCREW, TO SUIT SPECIFICATION	N	KNAUF COREBOARD CHANNEL	U	KNAUF RESILIENT BAR, TO SUIT SPECIFICATION	-	-

- STANDARD ARRANGEMENT OF KNAUF COMPONENTS FORMING KNAUF SYSTEM TYPES AND THEIR TYPICAL APPLICATIONS WHICH SHOULD BE USED FOR REFERENCE TO HELP THE DEVELOPMENT OF INSTALLATION AND SITE DETAILING. STANDARD DETAILS ARE SUBMITTED TO SUPPORT THE KNAUF SPECIFICATION AND FORM PART OF TESTED SYSTEMS/AND OR HAVE BEEN REVIEWED BY AN ACCREDITED THIRD PARTY TO DEMONSTRATE SUITABILITY. NOTE:
- STANDARD DETAILS DO NOT CONSTITUTE CONSTRUCTION ISSUE DETAILS WHICH REMAIN THE RESPONSIBILITY OF THE PRINCIPAL DESIGNER/CONTRACTOR WHO IS REQUIRED TO TRANSLATE AND SUITABLY INTEGRATE THE STANDARD DETAILS INTO THE OVERARCHING ARCHITECTURAL DESIGN AND/OR INSTALLATION. THE PRINCIPAL DESIGNER/CONTRACTOR IS REQUIRED TO CONSIDER INTERFACES WITH OTHER SYSTEM TYPES, STRUCTURES, OPENINGS, AND JUNCTIONS WHILE ENSURING THE SITE-SPECIFIC PERFORMANCE STRATEGY IS MET. THESE INCLUDE, BUT ARE NOT LIMITED TO, FIRE, ROBUSTNESS, ACOUSTICS, THERMAL, AIRTIGHTNESS AND MOISTURE RESISTANT FOR THE BUILDING.
- FURTHER NOTES:

KNAUF STANDARD DETAILS

DRAWING NO: KSD23-0231



DETAIL TITLE: DOOR JAMB ARRANGEMENT FOR DOOR LEAF WEIGHT FROM 61-100kg, ISOMETRIC

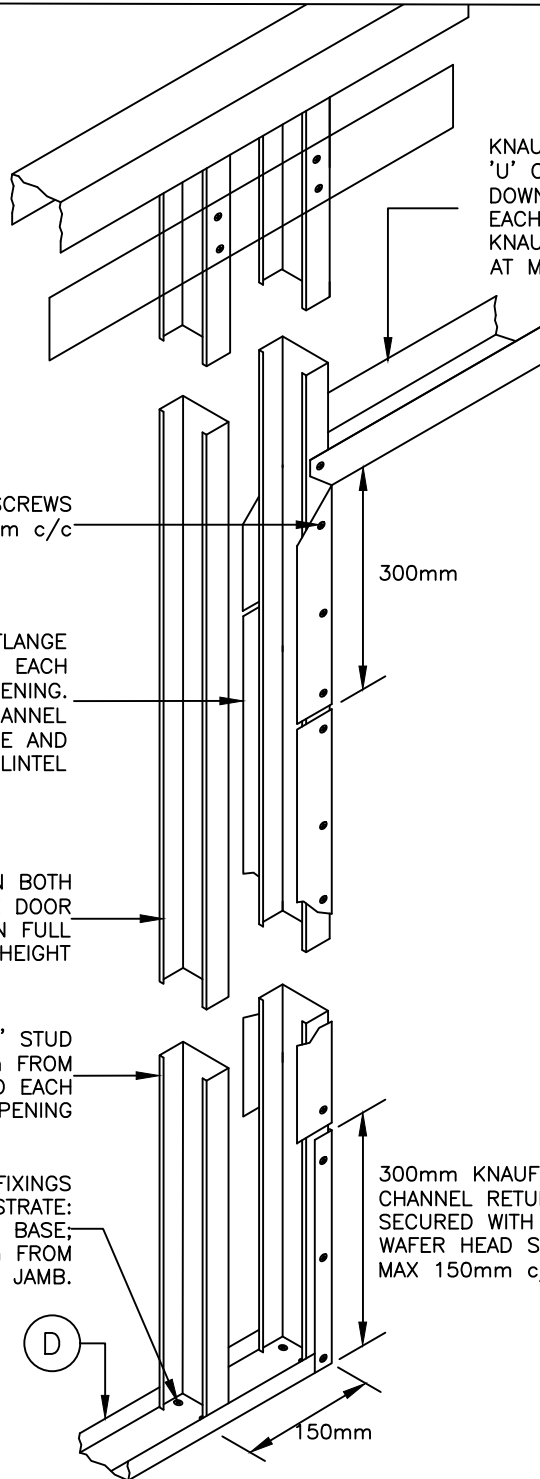
REVISION: A

ISSUE DATE: 17/11/23

SCALE: NTS

DRAWN BY: TECHNICAL

APPROVED BY: TMT



KNAUF 70mm DEEP FLANGE 'U' CHANNEL CUT AND BENT DOWN THE JAMB STUDS ON EACH SIDE. SECURED WITH KNAUF WAFER HEAD SCREWS AT MAX. 150mm c/c

(G) KNAUF WAFER HEAD SCREWS
MAX 300mm c/c

300mm

(E) KNAUF 70mm DEEP FLANGE 'U' CHANNEL TO CLOAK EACH SIDE OF DOOR OPENING. FITTED BETWEEN 'U' CHANNEL RETURNS AT BOTH BASE AND LINTEL

(B) KNAUF 'C' STUD ON BOTH SIDES OF THE DOOR OPENING, TO RUN FULL HEIGHT

(C) ADDITIONAL KNAUF 'C' STUD POSITIONED 150mm FROM DOOR JAMB STUD EACH SIDE OF DOOR OPENING

(X) TWO PAIRS OF FIXINGS SUITABLE FOR THE SUBSTRATE: ONE PAIR AT JAMB STUD BASE, ONE PAIR AT 150mm FROM DOOR JAMB.

300mm KNAUF 'U' CHANNEL RETURN, SECURED WITH KNAUF WAFER HEAD SCREWS AT MAX 150mm c/c

150mm

A	KNAUF PLASTERBOARD, TO SUIT SPECIFICATION	H	KNAUF COREBOARD	O	KNAUF 2 x 19mm COREBOARD FILLETS	V	KNAUF STAGGERED STUD CLIP, TO SUIT SPECIFICATION
B	KNAUF STUD, TO SUIT SPECIFICATION	I	KNAUF INSULATION, TO SUIT SPECIFICATION	P	KNAUF PUTTY PAD	W	KNAUF MOVEMENT CONTROL JOINT
C	KNAUF 'C' STUD, TO SUIT SPECIFICATION	J	-	Q	KNAUF 25 x 25mm ANGLE SECTION	X	APPROVED FIXING TO MEET SUBSTRATE/LOADING REQUIREMENTS
D	KNAUF 'U' CHANNEL, TO SUIT SPECIFICATION	K	KNAUF INTUMESCENT AND ACOUSTIC MASTIC	R	KNAUF 25 x 50mm ANGLE SECTION	Y	PLYWOOD, TO SUIT SPECIFICATION, BY OTHERS
E	KNAUF DEEP FLANGE 'U' CHANNEL, TO SUIT SPECIFICATION	L	KNAUF JOINTING RANGE	S	KNAUF FINISHING RANGE	Z	SHAPED TIMBER GROUND, TO SUIT SPECIFICATION, BY OTHERS
F	KNAUF SCREW, TO SUIT SPECIFICATION, AT 300mm C/C	M	KNAUF FLAT FIXING PLATE, TO SUIT SPECIFICATION	T	KNAUF INSULATION ROCKSILK® RS60	-	-
G	KNAUF WAFER HEAD SCREW, TO SUIT SPECIFICATION	N	KNAUF COREBOARD CHANNEL	U	KNAUF RESILIENT BAR, TO SUIT SPECIFICATION	-	-

- STANDARD ARRANGEMENT OF KNAUF COMPONENTS FORMING KNAUF SYSTEM TYPES AND THEIR TYPICAL APPLICATIONS WHICH SHOULD BE USED FOR REFERENCE TO HELP THE DEVELOPMENT OF INSTALLATION AND SITE DETAILING. STANDARD DETAILS ARE SUBMITTED TO SUPPORT THE KNAUF SPECIFICATION AND FORM PART OF TESTED SYSTEMS/AND OR HAVE BEEN REVIEWED BY AN ACCREDITED THIRD PARTY TO DEMONSTRATE SUITABILITY. NOTE:
 - STANDARD DETAILS DO NOT CONSTITUTE CONSTRUCTION ISSUE DETAILS WHICH REMAIN THE RESPONSIBILITY OF THE PRINCIPAL DESIGNER/CONTRACTOR WHO IS REQUIRED TO TRANSLATE AND SUITABLY INTEGRATE THE STANDARD DETAILS INTO THE OVERARCHING ARCHITECTURAL DESIGN AND/OR INSTALLATION. THE PRINCIPAL DESIGNER/CONTRACTOR IS REQUIRED TO CONSIDER INTERFACES WITH OTHER SYSTEM TYPES, STRUCTURES, OPENINGS, AND JUNCTIONS WHILST ENSURING THE SITE-SPECIFIC PERFORMANCE STRATEGY IS MET. THESE INCLUDE, BUT ARE NOT LIMITED TO, FIRE, ROBUSTNESS, ACOUSTICS, THERMAL, AIRTIGHTNESS AND MOISTURE RESISTANT FOR THE BUILDING.
 - FURTHER NOTES:

KNAUF STANDARD DETAILS

DRAWING NO: KSD23-0232



DETAIL TITLE: SHAFTWALL DOOR JAMB ARRANGEMENT FOR DOOR LEAF WEIGHT OF UP TO 60kg, ISOMETRIC

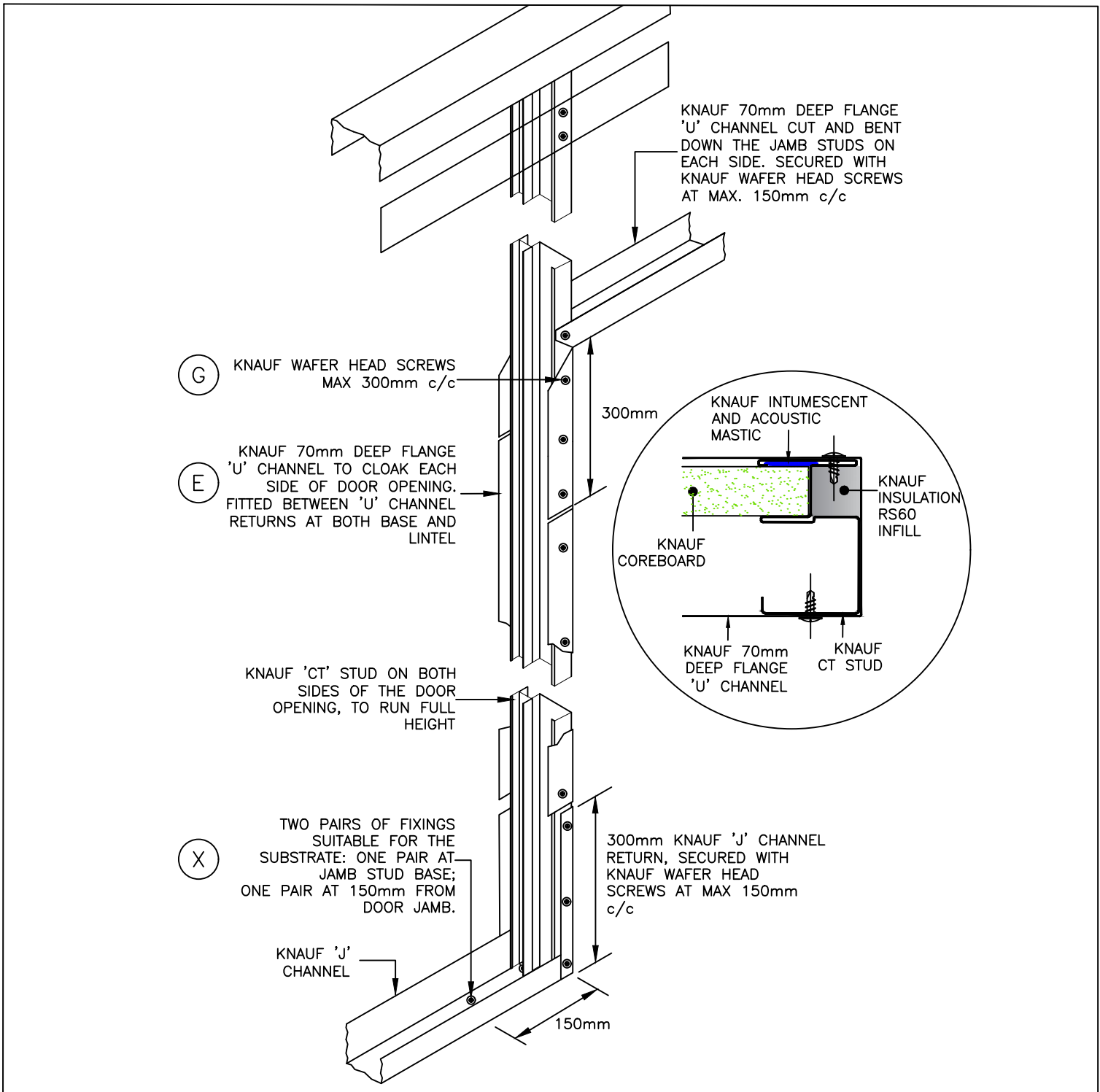
REVISION: A

ISSUE DATE: 17/11/23

SCALE: NTS

DRAWN BY: TECHNICAL

APPROVED BY: TMT



A	KNAUF PLASTERBOARD, TO SUIT SPECIFICATION	H	KNAUF COREBOARD	O	KNAUF 2 x 19mm COREBOARD FILLETS	V	KNAUF STAGGERED STUD CLIP, TO SUIT SPECIFICATION
B	KNAUF STUD, TO SUIT SPECIFICATION	I	KNAUF INSULATION, TO SUIT SPECIFICATION	P	KNAUF PUTTY PAD	W	KNAUF MOVEMENT CONTROL JOINT
C	KNAUF 'C' STUD, TO SUIT SPECIFICATION	J	-	Q	KNAUF 25 x 25mm ANGLE SECTION	X	APPROVED FIXING TO MEET SUBSTRATE/LOADING REQUIREMENTS
D	KNAUF 'U' CHANNEL, TO SUIT SPECIFICATION	K	KNAUF INTUMESCENT AND ACOUSTIC MASTIC	R	KNAUF 25 x 50mm ANGLE SECTION	Y	PLYWOOD, TO SUIT SPECIFICATION, BY OTHERS
E	KNAUF DEEP FLANGE 'U' CHANNEL, TO SUIT SPECIFICATION	L	KNAUF JOINTING RANGE	S	KNAUF FINISHING RANGE	Z	SHAPED TIMBER GROUND, TO SUIT SPECIFICATION, BY OTHERS
F	KNAUF SCREW, TO SUIT SPECIFICATION, AT 300mm C/C	M	KNAUF FLAT FIXING PLATE, TO SUIT SPECIFICATION	T	KNAUF INSULATION ROCKSILK® RS60	-	-
G	KNAUF WAFER HEAD SCREW, TO SUIT SPECIFICATION	N	KNAUF COREBOARD CHANNEL	U	KNAUF RESILIENT BAR, TO SUIT SPECIFICATION	-	-

- STANDARD ARRANGEMENT OF KNAUF COMPONENTS FORMING KNAUF SYSTEM TYPES AND THEIR TYPICAL APPLICATIONS WHICH SHOULD BE USED FOR REFERENCE TO HELP THE DEVELOPMENT OF INSTALLATION AND SITE DETAILING. STANDARD DETAILS ARE SUBMITTED TO SUPPORT THE KNAUF SPECIFICATION AND FORM PART OF TESTED SYSTEMS/AND OR HAVE BEEN REVIEWED BY AN ACCREDITED THIRD PARTY TO DEMONSTRATE SUITABILITY. NOTE:
- STANDARD DETAILS DO NOT CONSTITUTE CONSTRUCTION ISSUE DETAILS WHICH REMAIN THE RESPONSIBILITY OF THE PRINCIPAL DESIGNER/CONTRACTOR WHO IS REQUIRED TO TRANSLATE AND SUITABLY INTEGRATE THE STANDARD DETAILS INTO THE OVERARCHING ARCHITECTURAL DESIGN AND/OR INSTALLATION. THE PRINCIPAL DESIGNER/CONTRACTOR IS REQUIRED TO CONSIDER INTERFACES WITH OTHER SYSTEM TYPES, STRUCTURES, OPENINGS, AND JUNCTIONS WHILST ENSURING THE SITE-SPECIFIC PERFORMANCE STRATEGY IS MET. THESE INCLUDE, BUT ARE NOT LIMITED TO, FIRE, ROBUSTNESS, ACOUSTICS, THERMAL, AIRTIGHTNESS AND MOISTURE RESISTANT FOR THE BUILDING.
- FURTHER NOTES:

KNAUF STANDARD DETAILS

DRAWING NO: KSD23-0233



DETAIL TITLE: SHAFTWALL DOOR JAMB ARRANGEMENT FOR DOOR LEAF WEIGHT FROM 61-100kg, ISOMETRIC

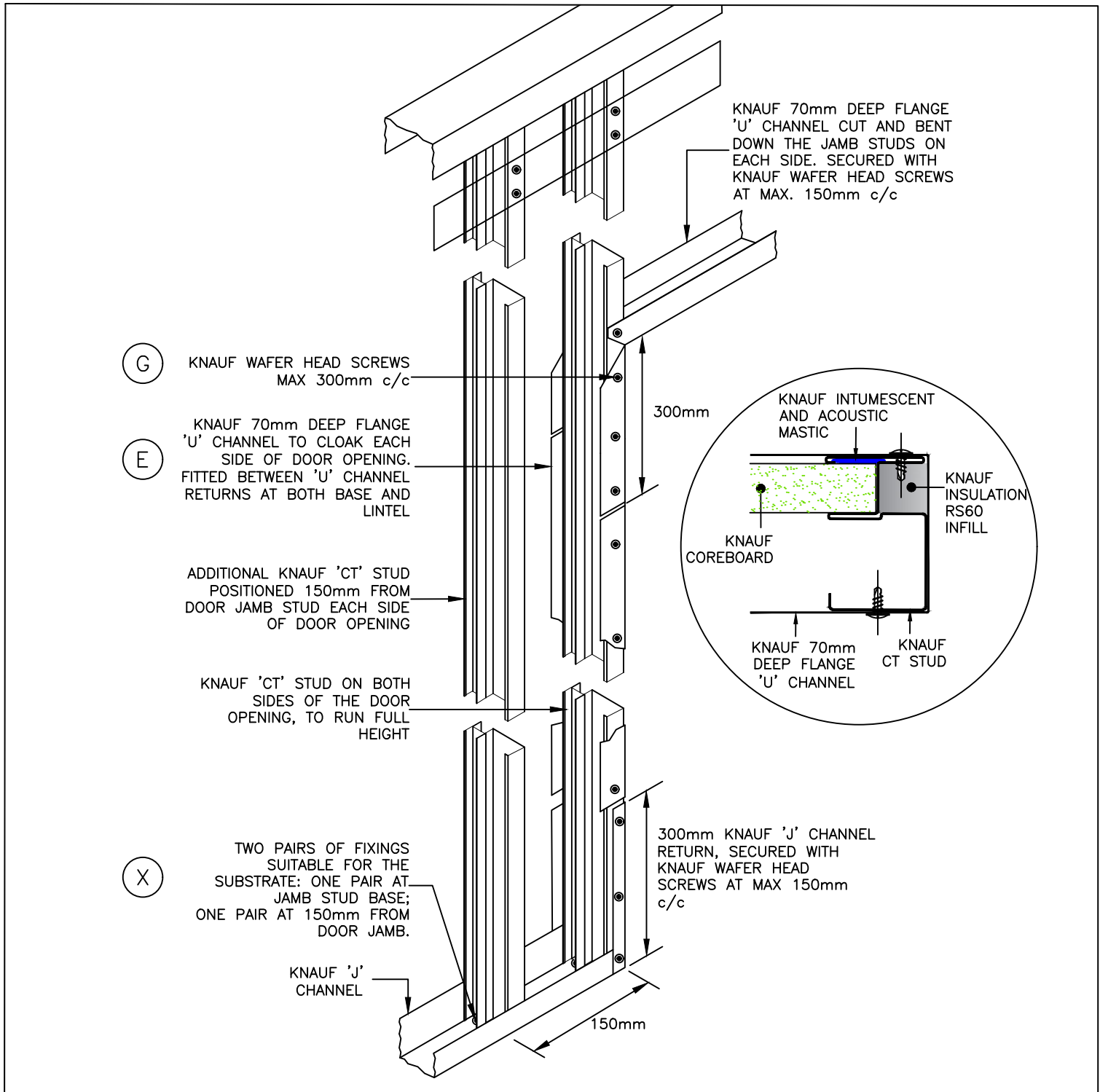
REVISION: A

ISSUE DATE: 17/11/23

SCALE: NTS

DRAWN BY: TECHNICAL

APPROVED BY: TMT



A	KNAUF PLASTERBOARD, TO SUIT SPECIFICATION	H	KNAUF COREBOARD	O	KNAUF 2 x 19mm COREBOARD FILLETS	V	KNAUF STAGGERED STUD CLIP, TO SUIT SPECIFICATION
B	KNAUF STUD, TO SUIT SPECIFICATION	I	KNAUF INSULATION, TO SUIT SPECIFICATION	P	KNAUF PUTTY PAD	W	KNAUF MOVEMENT CONTROL JOINT
C	KNAUF 'C' STUD, TO SUIT SPECIFICATION	J	-	Q	KNAUF 25 x 25mm ANGLE SECTION	X	APPROVED FIXING TO MEET SUBSTRATE/LOADING REQUIREMENTS
D	KNAUF 'U' CHANNEL, TO SUIT SPECIFICATION	K	KNAUF INTUMESCENT AND ACOUSTIC MASTIC	R	KNAUF 25 x 50mm ANGLE SECTION	Y	PLYWOOD, TO SUIT SPECIFICATION, BY OTHERS
E	KNAUF DEEP FLANGE 'U' CHANNEL, TO SUIT SPECIFICATION	L	KNAUF JOINTING RANGE	S	KNAUF FINISHING RANGE	Z	SHAPED TIMBER GROUND, TO SUIT SPECIFICATION, BY OTHERS
F	KNAUF SCREW, TO SUIT SPECIFICATION, AT 300mm C/C	M	KNAUF FLAT FIXING PLATE, TO SUIT SPECIFICATION	T	KNAUF INSULATION ROCKSILK® RS60	-	-
G	KNAUF WAFER HEAD SCREW, TO SUIT SPECIFICATION	N	KNAUF COREBOARD CHANNEL	U	KNAUF RESILIENT BAR, TO SUIT SPECIFICATION	-	-

- STANDARD ARRANGEMENT OF KNAUF COMPONENTS FORMING KNAUF SYSTEM TYPES AND THEIR TYPICAL APPLICATIONS WHICH SHOULD BE USED FOR REFERENCE TO HELP THE DEVELOPMENT OF INSTALLATION AND SITE DETAILING. STANDARD DETAILS ARE SUBMITTED TO SUPPORT THE KNAUF SPECIFICATION AND FORM PART OF TESTED SYSTEMS/AND OR HAVE BEEN REVIEWED BY AN ACCREDITED THIRD PARTY TO DEMONSTRATE SUITABILITY. NOTE:
- STANDARD DETAILS DO NOT CONSTITUTE CONSTRUCTION ISSUE DETAILS WHICH REMAIN THE RESPONSIBILITY OF THE PRINCIPAL DESIGNER/CONTRACTOR WHO IS REQUIRED TO TRANSLATE AND SUITABLY INTEGRATE THE STANDARD DETAILS INTO THE OVERARCHING ARCHITECTURAL DESIGN AND/OR INSTALLATION. THE PRINCIPAL DESIGNER/CONTRACTOR IS REQUIRED TO CONSIDER INTERFACES WITH OTHER SYSTEM TYPES, STRUCTURES, OPENINGS, AND JUNCTIONS WHILST ENSURING THE SITE-SPECIFIC PERFORMANCE STRATEGY IS MET. THESE INCLUDE, BUT ARE NOT LIMITED TO, FIRE, ROBUSTNESS, ACOUSTICS, THERMAL, AIRTIGHTNESS AND MOISTURE RESISTANT FOR THE BUILDING.
- FURTHER NOTES:

KNAUF STANDARD DETAILS

DRAWING NO: KSD23-0234



DETAIL TITLE: DOOR JAMB ARRANGEMENT, PLAN VIEW OF FIXINGS THROUGH BASE 'U' CHANNELS

REVISION: A

ISSUE DATE: 17/11/23

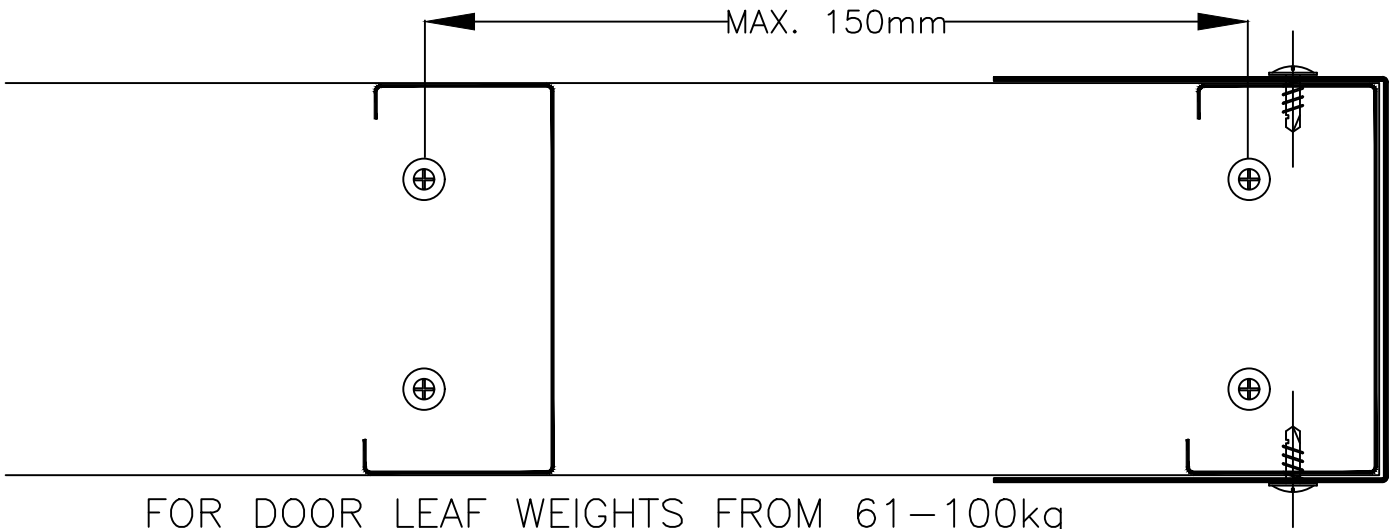
SCALE: NTS

DRAWN BY: TECHNICAL

APPROVED BY: TMT



FOR DOOR LEAF WEIGHTS UP TO 60kg



FOR DOOR LEAF WEIGHTS FROM 61-100kg

A	KNAUF PLASTERBOARD, TO SUIT SPECIFICATION	H	KNAUF COREBOARD	O	KNAUF 2 x 19mm COREBOARD FILLETS	V	KNAUF STAGGERED STUD CLIP, TO SUIT SPECIFICATION
B	KNAUF STUD, TO SUIT SPECIFICATION	I	KNAUF INSULATION, TO SUIT SPECIFICATION	P	KNAUF PUTTY PAD	W	KNAUF MOVEMENT CONTROL JOINT
C	KNAUF 'C' STUD, TO SUIT SPECIFICATION	J	-	Q	KNAUF 25 x 25mm ANGLE SECTION	X	APPROVED FIXING TO MEET SUBSTRATE/LOADING REQUIREMENTS
D	KNAUF 'U' CHANNEL, TO SUIT SPECIFICATION	K	KNAUF INTUMESCENT AND ACOUSTIC MASTIC	R	KNAUF 25 x 50mm ANGLE SECTION	Y	PLYWOOD, TO SUIT SPECIFICATION, BY OTHERS
E	KNAUF DEEP FLANGE 'U' CHANNEL, TO SUIT SPECIFICATION	L	KNAUF JOINTING RANGE	S	KNAUF FINISHING RANGE	Z	SHAPED TIMBER GROUND, TO SUIT SPECIFICATION, BY OTHERS
F	KNAUF SCREW, TO SUIT SPECIFICATION, AT 300mm C/C	M	KNAUF FLAT FIXING PLATE, TO SUIT SPECIFICATION	T	KNAUF INSULATION ROCKSILK® RS60	-	-
G	KNAUF WAFER HEAD SCREW, TO SUIT SPECIFICATION	N	KNAUF COREBOARD CHANNEL	U	KNAUF RESILIENT BAR, TO SUIT SPECIFICATION	-	-

- STANDARD ARRANGEMENT OF KNAUF COMPONENTS FORMING KNAUF SYSTEM TYPES AND THEIR TYPICAL APPLICATIONS WHICH SHOULD BE USED FOR REFERENCE TO HELP THE DEVELOPMENT OF INSTALLATION AND SITE DETAILING. STANDARD DETAILS ARE SUBMITTED TO SUPPORT THE KNAUF SPECIFICATION AND FORM PART OF TESTED SYSTEMS/AND OR HAVE BEEN REVIEWED BY AN ACCREDITED THIRD PARTY TO DEMONSTRATE SUITABILITY.
- NOTE: STANDARD DETAILS DO NOT CONSTITUTE CONSTRUCTION ISSUE DETAILS WHICH REMAIN THE RESPONSIBILITY OF THE PRINCIPAL DESIGNER/CONTRACTOR WHO IS REQUIRED TO TRANSLATE AND SUITABLY INTEGRATE THE STANDARD DETAILS INTO THE OVERARCHING ARCHITECTURAL DESIGN AND/OR INSTALLATION. THE PRINCIPAL DESIGNER/CONTRACTOR IS REQUIRED TO CONSIDER INTERFACES WITH OTHER SYSTEM TYPES, STRUCTURES, OPENINGS, AND JUNCTIONS WHILST ENSURING THE SITE-SPECIFIC PERFORMANCE STRATEGY IS MET. THESE INCLUDE, BUT ARE NOT LIMITED TO, FIRE, ROBUSTNESS, ACOUSTICS, THERMAL, AIRTIGHTNESS AND MOISTURE RESISTANT FOR THE BUILDING.
- FURTHER NOTES: