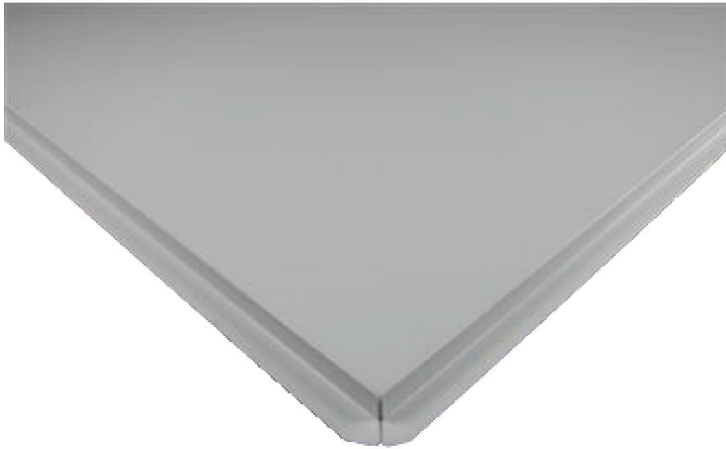


# **USGKnauf Aluminum Plain Lay-in Tile**

## USGKnauf Aluminum Plain Lay –in Tile



### Product Features:

Description	Unit	Specification
Material	NA	Aluminium
Surface coating	NA	Powder coated
Nominal size	mm	600x600, 300x1200, & 600x1200
Product size	mm	595x595, 295x1195, & 595x1195
Thickness	mm	0.70
Front coating	Microns	60 microns polyester paint
Edge detail	NA	SQ, Bevelled
Finish	NA	Matt finish
Colour	NA	White
Grid options	NA	T15, T24

\*\*For actual results, batch MTC shall be referred.

### Applicable Standards:

USGKnauf Internal Test Method

#### Knauf India Private Limited

**Head Office:** 9th Floor Plaza Tower, DLF  
Phase -1, Gurugram - 122002, Haryana, India

**Customer Care No:** +91 - 9015147147  
**Email:** info.india@knauf.com

[www.usgknauf.com](http://www.usgknauf.com)