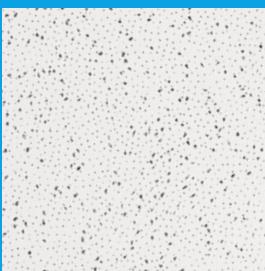


# KNAUF

## AMF THERMATEX® Mercure Complete



© Rendering

**Build on us.**

AMF THERMATEX® Mercure is a white ceiling panel featuring fine perforations, creating a modern, high-quality surface finish

- Good sound absorption ( $0.60 \alpha_w$ )
- Good light reflectance (85%)
- Ideal for retail, offices and meeting rooms, installation rooms or production areas

Characteristics	Detailed information							
Edge details		Board	Tegular 24		Tegular 15			
Additional edge details on request								
Thickness (mm)		15	19-15		15			
Dimensions (mm)		610 x 610 625 x 625 1220 x 610 1250 x 625	600 x 600 (19mm) 610 x 610 (15 mm)		610 x 610 625 x 625			
System		Exposed demountable - System C						
Weight		<b>4.0 kg / m<sup>2</sup></b> (15 mm) <b>5.0 kg / m<sup>2</sup></b> (19 mm)						
Colour		 White						
Sound absorption		EN ISO 354 $\alpha_w = 0.70$ (15 mm) <b>0.75</b> (19 mm) as per EN ISO 11654 - <b>Class C</b>						
		Frequency f (Hz)	<b>125</b>	<b>250</b>	<b>500</b>	<b>1000</b>	<b>2000</b>	<b>4000</b>
		$\alpha_p$ 15 mm	0.50	0.60	0.60	0.75	0.90	0.75
		$\alpha_p$ 19 mm	0.40	0.50	0.70	0.90	0.90	0.75
		NRC = <b>0.75</b> as per ASTM C 423						
Sound attenuation		EN ISO 10848-2 $D_{n,f,w} = 34$ dB (15 mm) as per EN ISO 717-1 $D_{n,f,w} = 38$ dB (19 mm) as per EN ISO 717-1 <b>CAC = 36 dB</b> as per ASTM E 413-10						
Sound reduction		EN ISO 10140-2 $R_w = 21$ dB as per EN ISO 717-1						
Fire reaction		Euroclass <b>A2-s1, d0</b> as per EN 13501-1 <b>Class A</b> as per ASTM E 84						
Light reflectance		<b>85%</b>						
Thermal conductivity		$\lambda = 0.060$ W/mk as per EN 12667						
Humidity resistance		<b>95% RH</b>						
Indoor air quality								
		A+	E1					
Cleanability								
Sustainability								
		43.4%	EN 15804					
		EC 1272/2008 Annex G		<a href="http://www.blauer-engel.de/uz132">www.blauer-engel.de/uz132</a>				