

DesignScapes

— First Edition —

KNAUFCEILING
Solutions



Content

4 Elevating Spaces

- 6 Montownia Lofts & Experience_Poland
- 10 Community School, Campbell Heidelberg_Germany
- 14 Loxone Campus_Austria
- 18 One Elmwood, Queen's University Belfast_United Kingdom
- 22 Concert Hall_Ukraine

26 "Learning to Create the Future": An Interview with Ksenija Smoje
Interior Designer and Lecturer at the British Academy of Interior Design

28 Liberating Creativity

- 30 Varso Tower_Poland
- 34 Schwille Architektenpartnerschaft_Germany
- 38 Business Centre Dominant Plaza, Complex 2_Ukraine
- 42 American International University_Kuwait
- 46 AppLike Group_Germany

50 Be Inspired by Colour & Nature

52 Adapting to Change

- 54 Metropolitan Sheptytsky, Information Research Centre_Ukraine
- 58 Van Iersel Geveltechniek_The Netherlands
- 62 K2 Office_Poland
- 66 Campus Central, University of Stirling_United Kingdom
- 70 UniForce Fitness Centre_Ukraine

74 "HERADESIGN®, Designed to Be Reusable": An Interview with Thomas Hartmetz
Architect at Schwille Architektenpartnerschaft mbB

76 Collaboration Made Easy

- 78 Graded School Indoor Swimming Pool_Brazil
- 82 South32, Melrose Arch_South Africa
- 86 Faculty of Law, University of Groningen_The Netherlands
- 90 Zeppelin SK s.r.o, Industrial Area_Slovakia
- 94 Silhcity Mall_Switzerland

Elevating Spaces

UNLEASHING WELL-BEING & SUSTAINABILITY IN DESIGN

In the dynamic landscape of architectural design, architects, specifiers, and interior designers are faced with the challenge of creating spaces that transcend the ordinary.

Beyond aesthetics and functionality, ceiling design demands a holistic approach, one that prioritises longevity, well-being, and comfort.

Crafting exceptional spaces requires the seamless integration of acoustical comfort, indoor air quality, natural light, hygiene, and sustainability.

In this article, we delve into three key aspects that define our commitment to elevating spaces to new heights.

Ensuring Longevity and Adaptability

The ever-evolving world demands spaces that can stand the test of time. To address this imperative, architects and interior designers are invited to embrace the concept of designing for adaptability. Innovative ceiling and wall solutions guarantee the enduring relevance of your design.

When conceived around adaptability, ceiling and wall solutions allow spaces to evolve with the changing needs of their end users. Whether it's an office, educational facility, or healthcare environment, customised solutions provide flexibility, making it easier to reconfigure spaces without the need for extensive renovations. This not only reduces costs but also minimises environmental impact, aligning with your sustainability goals.

Creating adaptable designs allow projects to remain future-proof and help them face the uncertainties of tomorrow's design landscape.

Prioritising Well-Being and Comfort

In the contemporary workplace, employee well-being is paramount. Designing spaces that foster comfort, productivity, and overall job satisfaction is a shared goal. Ceiling solutions must go beyond aesthetics and actively contribute to the well-being of occupants.

Excellent acoustic performances play a crucial role in creating comfort and uplifting mood. Alongside good indoor air quality, acoustical solutions combat the dual menace of noise and air pollution. Be it an office bustling with activity or a serene

educational institution, reduced noise levels lead to enhanced focus, learning, and overall satisfaction in any environment.

Natural light is also a transformative element in any space, reducing the need for artificial lighting and positively impacting people's health and morale.

Ceiling products play a crucial role in space design, facilitating quiet environments and harnessing natural sunlight. They help architects and interior designers create healthy, energy-efficient, inspiring spaces.

Sustaining Health and Hygiene

The global spotlight on health and hygiene has never been brighter. Design choices in healthcare settings can significantly impact patient outcomes.

With ceiling solutions that meet the highest hygiene standards, healthcare environments can achieve the paramount levels of cleanliness and infection control the industry requires, using materials that are rigorously tested and certified for hygiene applications. These measures ensure the safety and well-being of patients and healthcare professionals alike.

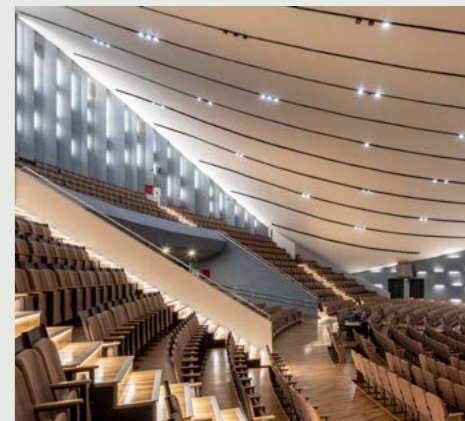
Architects, specifiers, and interior designers continue to shape the future of design, creating a wealth of sustainable and wellness-centric spaces where longevity and comfort coexist harmoniously.



Montowia Lofts & Experience (© Szymon Polarski), page 6



One Elmwood, Queens University Belfast (© Gareth Andrew), page 18

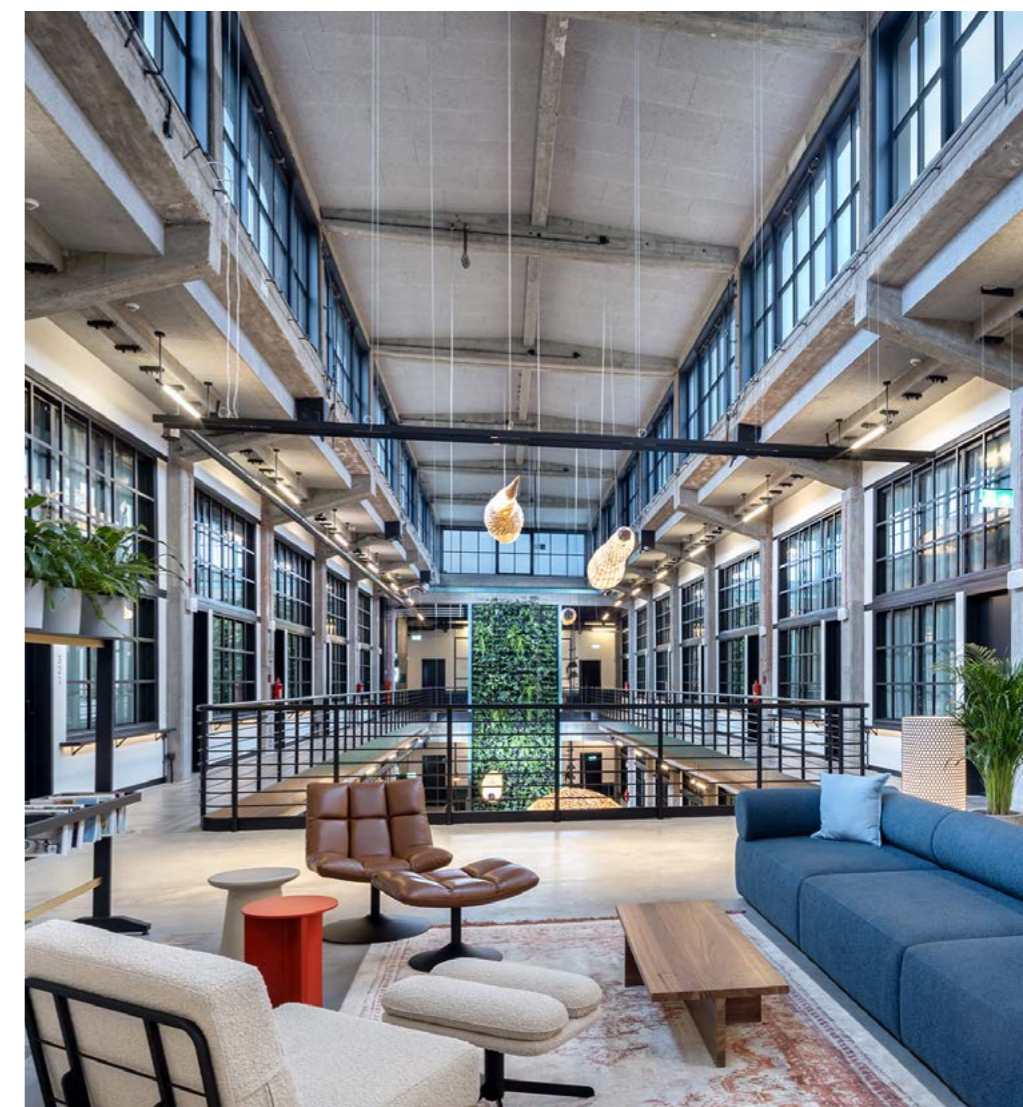
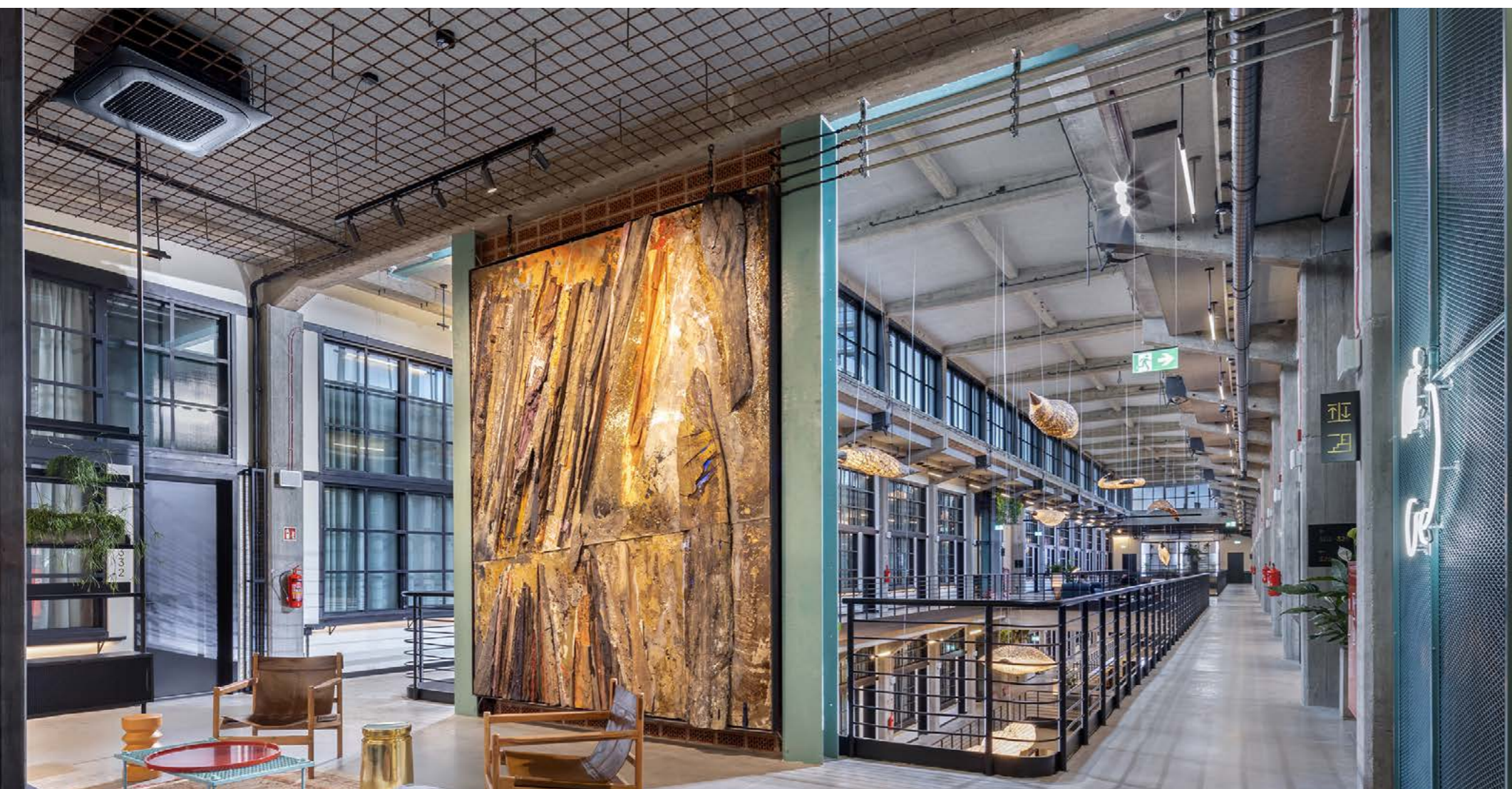


Concert Hall (© Sergey Kadulin Photography), page 22

Second life for a listed building.

MONTOWNIA EMBODIES HISTORIC PRESERVATION,
SUSTAINABLE DESIGN AND BEAUTY IN PURPOSE.

DESIGNED WITH THE CIRCULAR ECONOMY
PHILOSOPHY IN MIND, THE 1930S BUILDING CAREFULLY
CURATED MATERIALS ELIGIBLE FOR REUSE.





Montownia Lofts & Experience

Gdańsk, Poland

Historical Listed Building

Montownia is a rejuvenated historical building from the 1930s that is an integral part of the midtown multifunctional DOKI project.

Developed by Euro Styl next to the former Gdańsk Shipyard and the famous Gate No. 2, DOKI forms a whole new city quarter with offices, flats, and services built on site.

Beautifully Designed

The Montownia Lofts & Experience building is an example of how to give a historical building a second life, preserving its original atmosphere and yet introducing completely modern solutions and design.

The building was a place where submarine engines were assembled. Today, after extensive revitalisation, the architectural concept created by the Rayss Group studio charms us with its industrial interior design.

The entire space is kept in austere greys, enriching the space only with accents of colours, vibrant furniture upholstery and greenery.

While concrete walls reinforce the characteristic industrial feel of the place, ceilings and “bare” walls are combined in order to create a consistent décor over the entire project.

Addressing Acoustic Challenges

In the contemporary workplace, employee well-being is key. Designing spaces that foster comfort, productivity, and overall job satisfaction is a shared goal. Our ceiling solutions go beyond aesthetics; they actively contribute to the well-being of occupants.



WE WERE DEALING WITH A LISTED BUILDING AND IT WAS OUR STRONG PREFERENCE THAT INTERFERENCE IN THE INTERIOR SHOULD BE KEPT TO A MINIMUM.

—
ŁUKASZ RAYSS,
ARCHITECT, RAYSS GROUP



Scan the QR Code for more on this project on the Knauf Ceiling Solutions website.

Client
Eurostyl Montownia

Architect
Rayss Group

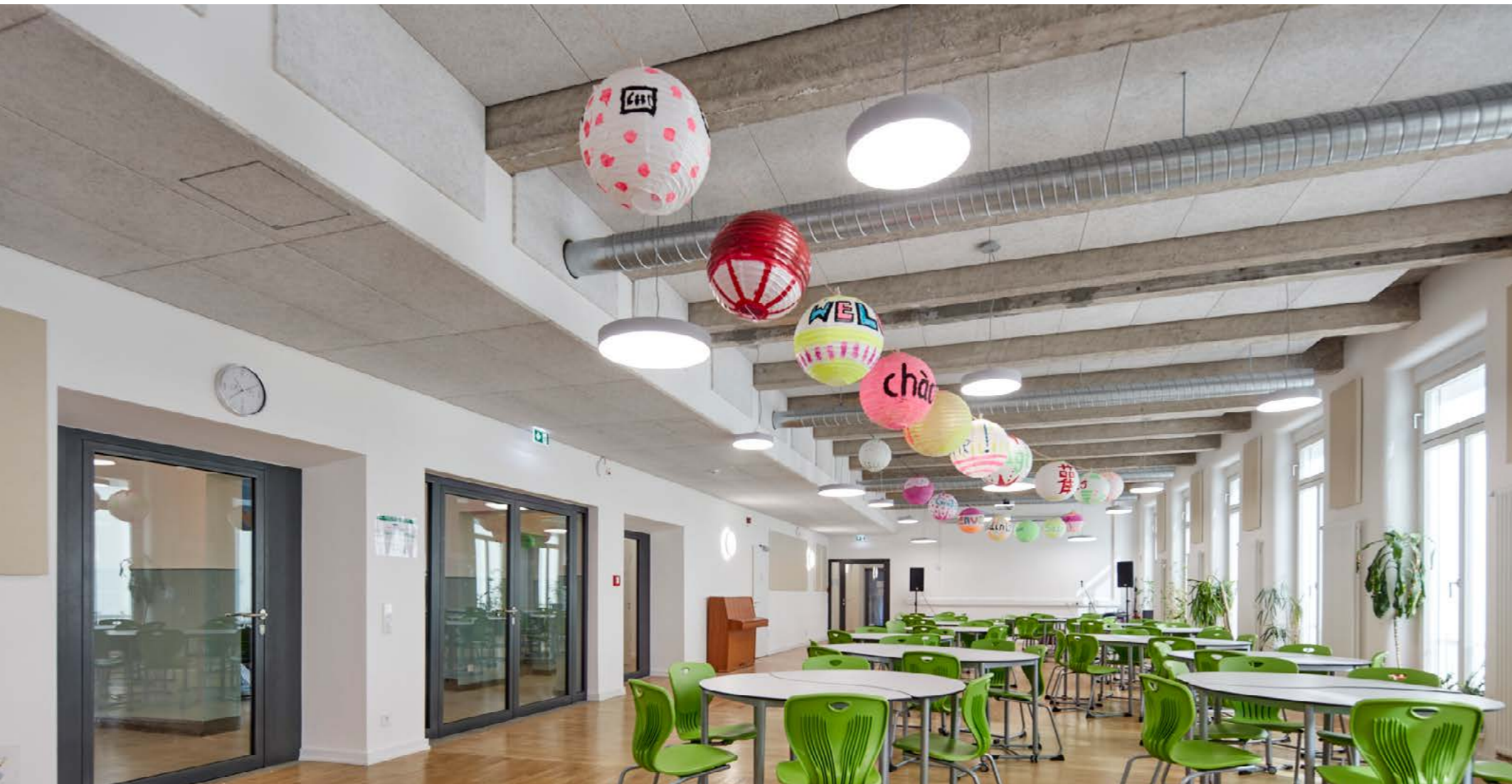
Solutions
HERADESIGN® Superfine, NCS S 3500-N, CD-Profile
HERADESIGN® Superfine Plus, NCS S 3500-N, CD-Profile
HERADESIGN® Macro Plus, NCS S 3500-N, CD-Profile

Photographer
© Szymon Polański

Restoring the original character of a listed building.

SITUATED IN THE SOUTHERN PART OF HEIDELBERG, THE CAMPBELL SITE SERVED AS THE HEADQUARTERS FOR THE U.S. ARMY IN EUROPE AND THE NATO LAND FORCES UNTIL 2014.

FOLLOWING THE MILITARY WITHDRAWAL, THE SITE UNDERWENT A TRANSFORMATION INTO A LOCAL NEIGHBOURHOOD, FEATURING RESIDENTIAL FLATS, COMMERCIAL AND OFFICE SPACES, AND EDUCATIONAL FACILITIES.





Community School, Campbell Heidelberg

Heidelberg, Germany

Listed Yet Re-purposed

Several buildings, including "Building 3," are listed, and after undergoing extensive refurbishment, that is now home to the HPC Agora Community School. The rooms have been acoustically optimised, featuring mineral and wood wool ceiling solutions provided by Knauf Ceiling Solutions.

Enhance Learning

The concept of the HPC Agora Community School diverges from traditional forms of learning, marked by alternating phases and locations for concentration, regeneration, and a range of spaces for living, movement, and development.

This diverse use of space elevates the requirements for room acoustics. Strategic and balanced acoustic planning mitigates disruptive noise and guarantees clear speech intelligibility in classrooms.

Consequently, this enhances the well-being of both students and teachers.

High-Quality Interior Design

The objective was to create a high-quality interior in the various rooms, achieved through meticulous attention to both acoustic and visual details.

This requirement was met with AMF THERMATEX® Acoustic mineral ceiling tiles. The premium ceiling appearance is defined by the acoustic fleece on the visible side, crafting an elegant, uniform surface while also delivering effective sound absorption ($\alpha_w = 0.65$ (H)) and outstanding sound attenuation (38 dB).

Additionally, approximately 200m² of HERADESIGN® wood wool acoustic panels with a Superfine white surface were installed in the school's canteen.

The priority for this central room in Building 3 was to preserve the load-bearing structure and keep the beam construction on the ceiling visible.

Simultaneously, the acoustic requirements needed to be addressed, as the room serves not only for catering to the students but also for various events.



ROOM ACOUSTICS AND SOUND ABSORPTION WERE VERY IMPORTANT IN THIS PROJECT RIGHT FROM THE START, BOTH FOR THE DESIGN OF THE CENTRAL ROOMS, WHICH ARE FREQUENTED BY ALL GRADES, AND FOR THE SMALLER CLASSROOMS AND STUDY ROOMS".

—
AKGÜN MÜRTEZE,
ARCHITECT, SSV ARCHITEKTEN



Scan the QR Code for more on this project on the Knauf Ceiling Solutions website.

Client
KRAUS Gruppe

Architect
SSV Architekten

Ceiling Installer
Lechnauer + Reuther GmbH Akustik und Innenausbau

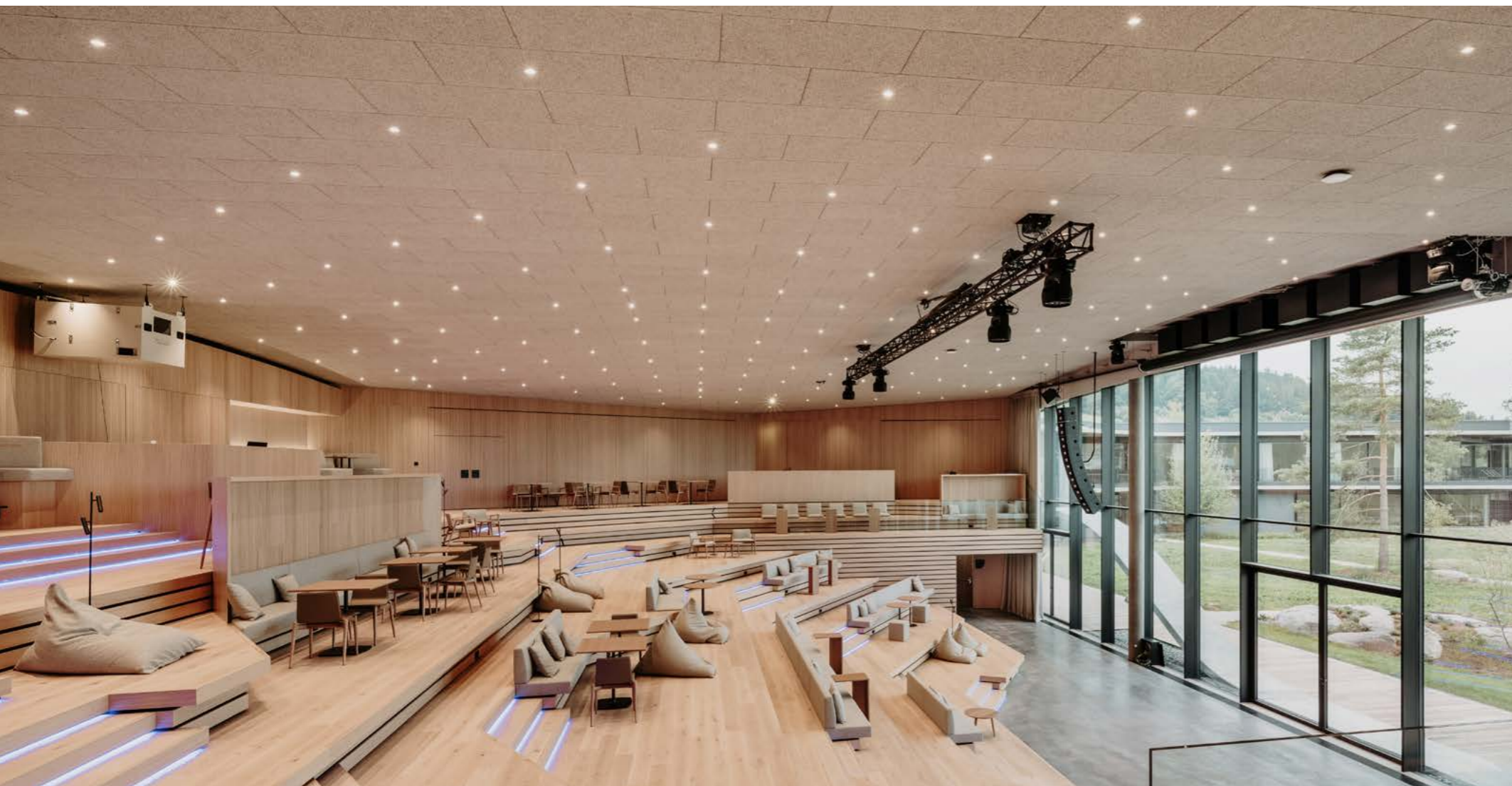
Solutions
HERADESIGN® Superfine, AK-01, White
THERMATEX® Acoustic, Finesse, White
THERMATEX® Acoustic, Board, White

Photographer
© Lukas Hüneke

An auditorium inspired by Italian market squares.

THE RECENTLY OPENED LOXONE CAMPUS STANDS AS A UNIQUE ARCHITECTURAL ENSEMBLE IN THE HEART OF EUROPE AND A SIGNIFICANT MILESTONE FOR THE PIONEER OF INTELLIGENT BUILDING AUTOMATION.

THE CAMPUS, CREATED OVER TWO AND A HALF YEARS, SEAMLESSLY BLENDS STATE-OF-THE-ART TECHNOLOGY WITH THE NATURAL LANDSCAPE. ARCHITECTS DESIGNED THE CAMPUS TO HARMONISE WITH ITS SURROUNDINGS.





Loxone Campus

Kollerschlag, Austria

Architectural Marvel

Loxone, a leader in intelligent building automation, unveiled its Loxone Campus in Kollerschlag, Upper Austria, in September 2023. Over two and a half years, this visionary project, designed by ARKFORM ZT GmbH, materialised into an architectural masterpiece, seamlessly blending into an eight-hectare landscape with an investment of €70 million euros.

The campus aims to showcase the diversity of intelligent building automation, emphasising energy efficiency, and is open to external companies and individuals. Apart from office spaces and an interactive experience zone, it features a combined seminar, hotel, and catering complex.

Acoustic Brilliance

Standing out within the Loxone Campus is the multifunctional auditorium, covering 600m² and accommodating up to 600 people. Inspired by the semi-circular design of Italian market squares, it boasts

high-performance technology and outstanding sound quality with a biaxial hollow core ceiling, spanning 33 metres.

Urmann Trockenbau GmbH, responsible for the interior fit-out, employed diverse acoustic measures, utilising HERADESIGN® Fine wood wool panels from Knauf Ceiling Solutions.

The panels, in a special "Slate15" colour, providing both visual allure and top-notch acoustic performance, enhancing the versatile usability of the auditorium.

Over 1,100m² of HERADESIGN® wood wool panels were applied not only in the auditorium ceiling but also in the wellness area and adjoining rooms. This demonstrates their versatility and contributes to a cohesive ambiance throughout the space.



"RIGHT FROM THE START, IT WAS CLEAR TO ME THAT OUR CAMPUS HAD TO HAVE A MULTIFUNCTIONAL SPACE LIKE THIS, BECAUSE IT CREATES OPENNESS AND LIVELINESS—TWO IMPORTANT KEYS TO INSPIRATION."

—
MARTIN ÖLLER
CO-OWNER & CO-FOUNDER
LOXONE



Scan the QR Code for more on this project on the Knauf Ceiling Solutions website.

Client
Loxone Campus GmbH

Architect
ARKFORM ZT GmbH, Linz

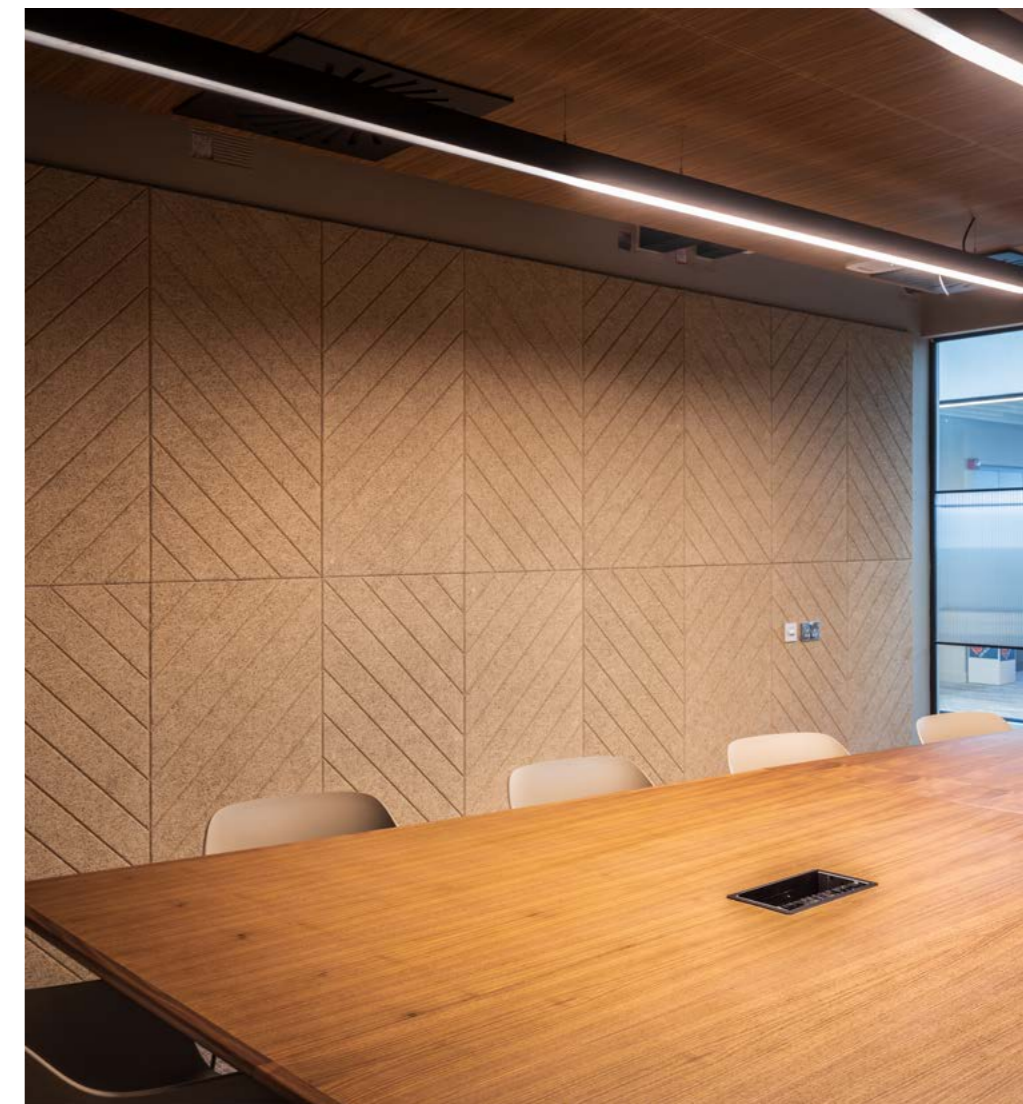
Installer
Urmann Trockenbau GmbH, Pasching

Solutions
HERADESIGN® Fine, AK-01, "Slate15" colour

Photographer
© Loxone

A Net Zero-Ready Building.

BASED IN HEART OF THE COSMOPOLITAN CITY OF BELFAST, QUEEN'S UNIVERSITY IS A MEMBER OF THE RUSSELL GROUP, AND ONE OF THE UNITED KINGDOM AND IRELAND'S LEADING UNIVERSITIES WHICH CONTINUES TO SHAPE AND SERVE THE WORLD THROUGH EDUCATION AND RESEARCH.





One Elmwood

Queen's University Belfast

Belfast, United Kingdom

A Net Zero Ready Building

Over the last 10 years the University has invested £350 million in developing world-class facilities with ambitious plans to invest a further £350 million over the next decade.

As part of the development programme a new 11,000m² state-of-the-art building was required that could bring together the university services and students union hub to ensure students could access services and collaborate in a space.

A New Heart for the Campus

The centre has been designed as a simple, flexible structure suitable for a variety of different uses under one roof. The impressive glazed exterior floods the building with light. The welcoming foyer is a large, flexible space decorated with a mature palette of deep reds and timber to create a calming atmosphere.

The Student Lounge, which opens up onto the student terrace, offers quiet rooms and a place students can gather and prepare lunch together.

In contrast the second floor features one of the longest bars in Belfast for drinking and socialising, as well as the "Wee Bar" for smaller, more intimate occasions opening out onto a terrace, overlooking the city.

Lightness and Transparency

With the entrance atrium combining various double and triple-height spaces over different floors, METAL Celloio was the perfect choice to provide a sleek contemporary ceiling that connected and unified these spaces into one recognisable volume, with a sense of lightness and transparency.

HERADESIGN® Creative was used throughout the building as a recognisable and repeated element that provided good acoustic performance with texture and pattern. From a wall and ceiling installation highlighting the reception area, to acoustic absorption on the walls in meeting rooms and subtle black hanging baffles in a bar space.



ONE ELMWOOD PROVIDED A 'ONCE IN A LIFETIME' OPPORTUNITY TO CREATE AND DELIVER A GAME-CHANGING FACILITY FOR THE UNIVERSITY AND THE STUDENTS.

—
ALAN SHIELDS,
DIRECTOR, RPP ARCHITECTS LTD.



ONE ELMWOOD IS DESIGNED TO BE THE HUB OF QUEEN'S, WITH ACCESSIBILITY, LOTS OF COLLABORATIVE SPACES, AND A PLACE WHERE STUDENTS CAN GO FOR HELP, RELAXATION, STUDY AND SOCIAL SUPPORT.

—
IAN GREER,
VICE-CHANCELLOR, ONE ELMWOOD



Scan the QR Code for more on this project on the Knauf Ceiling Solutions website.

Client
Queen's University Belfast

Lead Architect
RPP Architects Ltd
Hawkins\Brown

Lead Contractor
Felix O'Hare

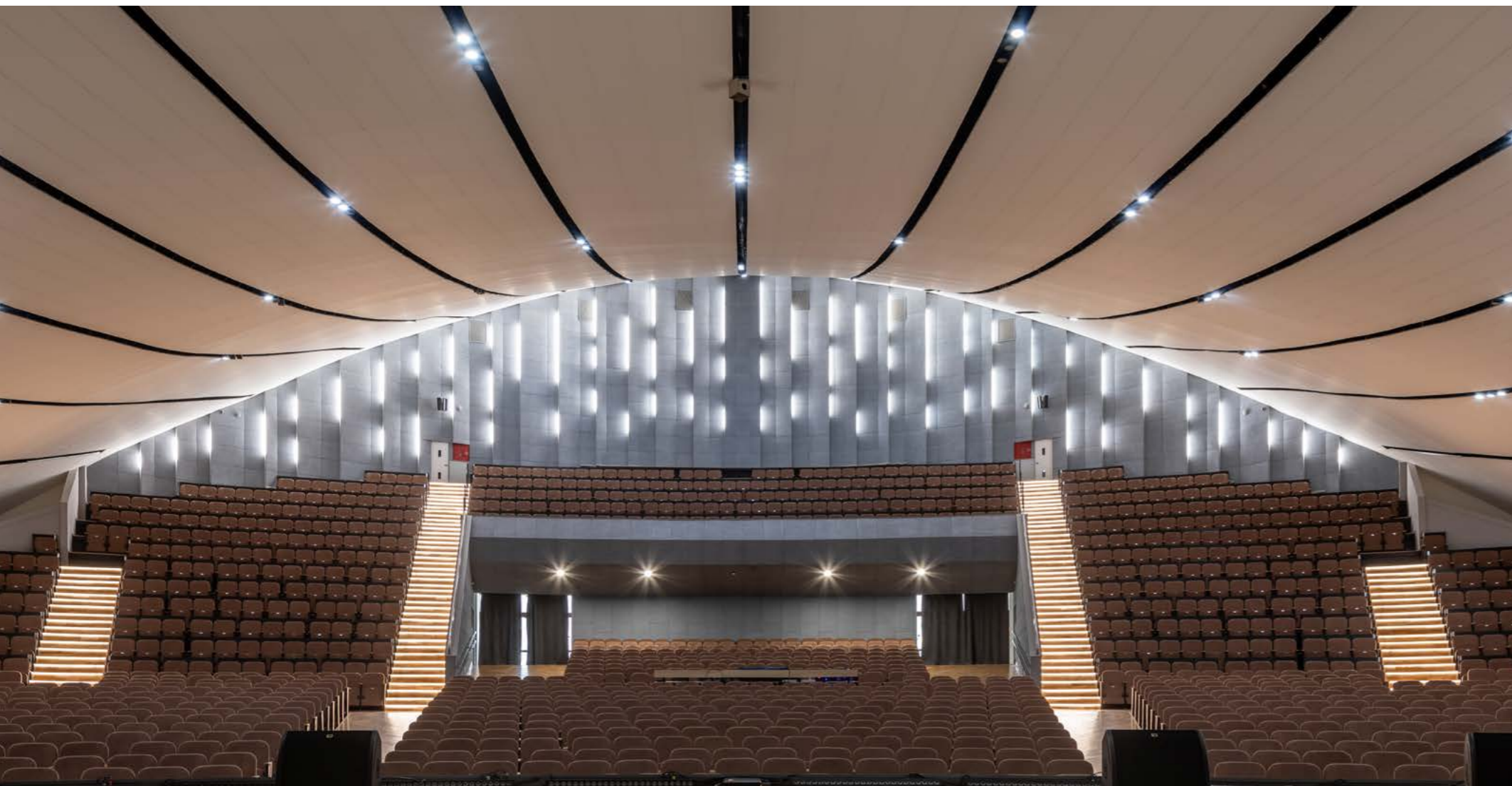
Contractor
Convery Ceilings

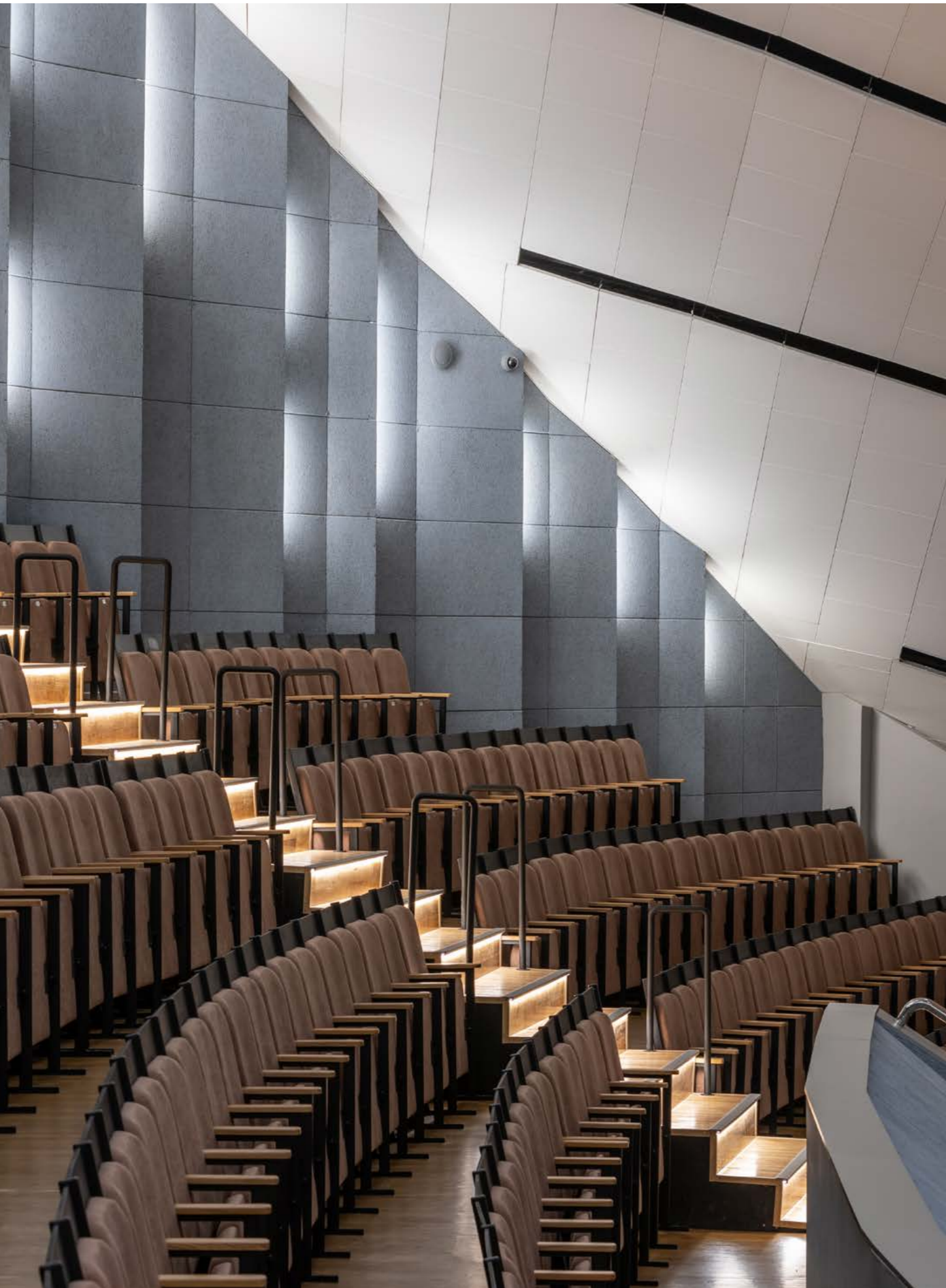
Solutions
METAL Celloio, C36, RAL 7039
HERADESIGN® Creative Line, Superfine, AK-01, Natural Tone 13
HERADESIGN® Baffle Element, Superfine, RAL 9005

Photographer
© Gareth Andrews

Rewarding the arts with exceptional acoustics.

INAUGURATED IN 1963, THE IMPRESSIVE SOVIET MODERNIST BUILDING IS AT THE CENTRE OF KHARKIV. SEATING 1,700 PEOPLE FOR CINEMA AND CONCERT REPRESENTATIONS, "UKRAINE" IS STILL ONE OF THE LARGEST VENUES OF KHARKIV.





Concert Hall

Kharkiv, Ukraine

Yesterday, Today and Tomorrow

Since its grand opening in the 1960s, this emblematic monument in the heart of Kharkiv, has witnessed numerous transformations and a remarkable durability. The letters at the front of the building have remained unchanged since its initial inauguration.

However, the most significant refurbishment to date, spanning three years, has recently taken place, propelling the concert hall into the 21st century, emphasising inclusivity and ensuring easy access for all.

This project has also given rise to a stunning new auditorium designed for exceptional acoustic performances. It is supported by Knauf Ceiling Solutions PLAIN mineral ceiling tiles, HERADESIGN® Superfine wood wool panels on the wall, and a comprehensive acoustic expertise and service.

These elements combine to provide extraordinary comfort for both audiences and musicians alike.



THE RESTORATION OF THE CONCERT HALL WAS A THREE-YEAR-LONG PROJECT, A DURATION NECESSARY TO PRESERVE A MONUMENT THAT HOLDS GREAT SIGNIFICANCE FOR EVERY CITIZEN OF KHARKIV.

—
ALYONA LEONOVA,
DIRECTOR, CONCERT HALL "UKRAINE"



Scan the QR Code for more on this project on the Knauf Ceiling Solutions website.

Client
Concert Hall "Ukraine"

Building Owner
Kharkiv City Administration

Architect
Yuriy Potykun

Solutions
PLAIN, Finesse, White
HERADESIGN® Superfine, AK-01

Photographer
© Sergiy Kadulin Photography

Learning to Create the Future

AN INTERVIEW WITH KSENIJA SMOJE, INTERIOR DESIGNER AND LECTURER AT THE BRITISH ACADEMY OF INTERIOR DESIGN

How do you reflect on the benefits and challenges of working as a designer, sales representative, and now lecturer?

Working as an architect or interior designer has highlighted the significance of a client brief and utilising visual tools for effective design communication. Clients must grasp how their ideas translate into the actual building and space design before approving choices. Challenges include attentive listening to clients needs, patiently explaining design rationale, and being prepared for the possibility that not all ideas may be accepted.

In my role as a sales representative, I delved into design details and the importance of accurate specification. Collaborating with various specifiers, including architects, designers, and contractors, enhanced my ability to engage them in the entire process by educating them about product features and benefits for the project, design, or installation.

Teaching others to become interior designers heightened my awareness of the responsibility behind each design decision and its potential impact on end users.

Can you walk us through translating clients' ideas into reality and your approach to collaborating with clients and suppliers?

I briefly highlighted the importance of the client brief—the starting point for transforming clients ideas into reality. In the next stage of the design cycle, architects and designers must set up a



clear concept design. Once approved, this design forms the project's foundation, making it more tangible. Next steps include floor plans, elevations, specifications, 3D visuals, and sample boards.

Effective collaboration and open discussions with clients are essential, maintaining transparency, updating them on any changes, and fostering trust. Suppliers are pivotal in ensuring timely project delivery, providing alternative solutions if needed and helping with pricing to keep budget integrity.

What would your personal approach to design be?

When designing a space, it's crucial to consider the end users—how they will use, enjoy, and benefit from the environments we designers create. Each space deserves equal attention, promoting both consistency in design schemes and the overarching concept of inclusivity that we should all embrace.

Can you highlight the key role architects play in prioritising comfort and nurturing a sense of well-being in their designed spaces?

Certainly, in the context of Modernism during the early 20th century, architects set up key principles such as "Less is more" and "Form follows function." These principles continue to play a vital role in contemporary space design, particularly concerning well-being and comfort. It's essential to clarify that this approach doesn't advocate minimalism but underscores the importance of purposeful design.

As architects and designers, we have a profound impact on our clients' lives through the choices we make in design. Ensuring adherence to ergonomic and design standards is paramount. Incorporating materials and finishes with minimal environmental impact, promoting clutter-free environments, connecting with nature, regulating indoor air quality, and maximising natural light are strategies that contribute to nurturing well-being. Moreover, introducing good acoustics and keeping hygiene standards, especially in spaces like hospitals, commercial kitchens, and swimming pools, is crucial within our design schemes.

How do architects use colours and materials to create spaces that are both aesthetically pleasing and emotionally resonant?

The colour theory stands out as one of the best answers to this question. It gives a better understanding of how colours can



Silicity Mall (© David Willen), page 94

be arranged, blended, and coordinated, explaining why some combinations work while others do not. Each colour has its own character, making it essential to understand the settings for which they are suited and the emotions they can evoke. For instance, blue enhances productivity, making it suitable for a busy office, while green, associated with the natural world, creates rejuvenating moods.

Colour holds great significance for any space as it brings rooms to life, creates an atmosphere, and influences our interaction with the space. It is a powerful design element. The introduction of colour in design involves creativity, using materials like fabrics, upholstery, and window treatments, with wall coverings and suspended ceilings offering even more significant impacts.

How has the role evolved in crafting flexible and collaborative workspaces in response to post-COVID work trends, especially in the era of hybrid work?

The pandemic profoundly altered our way of life, work, and interaction, forcing many home spaces to multitask (e.g., a dining area as an office and online learning hub). Although our daily routines have permanently changed, the post-COVID era has also set up new expectations for work trends. A daily office presence is no longer a strict requirement; instead, the hybrid work model has emerged. To enhance office appeal, these spaces should evoke a 'home away from home' sentiment. This has led to the rise of collaborative

workspaces, fostering flexibility and a less formal environment for gatherings.

The role of a designer has shifted towards finding a delicate balance between commercial and residential design. Achieving this balance is complex—spaces must not only be functional but also aesthetically pleasing, inviting, and cosy. Acoustic and visual comfort have become the two most crucial elements in the design of new and transformed office spaces.

How might architects adapt their skill sets and retain a sense of ownership over the creative process in response to the influence of generative Artificial Intelligence (AI)? What impact does this have on their role and the expectations for the next generation?

AI is an immensely discussed topic, yet its trajectory is challenging to predict.

In the early 2000s, with the emergence of AutoCAD software, the design process underwent a complete transformation. It not only speeded up technical drawings but also altered the overall approach to problem-solving in projects. The transition from architects relying on hand-sketching and drawing boards to the new generation leaning on software was immense. Yet, these two worlds managed to find a way to coexist.

Several AI text-to-image software already exist, allowing users to convert text inputs into AI-generated images. This transformation is changing the design process, potentially accelerating the concept design stage, and unlocking

innovative ideas. It will cause skill adjustments among architects and designers, akin to the transition with AutoCAD, but ideally, AI will remain a powerful tool rather than a replacement for architects.

As we conclude our interview, what upcoming trends or innovations in interior design are you excited about, and how do you anticipate their impact on the design landscape?

Designing with well-being in mind is an exciting and crucial initiative that has significantly altered our approach to the design process. The concept has evolved from new builds to re-purposing and recycling, emphasising a closer connection with nature. It's remarkable to witness how this approach reshapes design and sets new standards for materials and finishes. Additionally, this perspective has evolved into biophilic urbanism, aiming to create cities where an abundance of living plants enhances air quality, preserves natural habitats, and promotes a stable and healthy climate.

Another intriguing aspect is 3D-printed designs, which are easily replicable worldwide, offering a financially workable, simplified, and sustainable approach to building. This concept presents an exciting prospect, and it will be interesting to see its influence on the entire design landscape.

Liberating Creativity

—
EXPLORING DESIGN FREEDOM &
BOUNDLESS POSSIBILITIES
—

The architects and designers' quest for inspiration is an unending journey marked by a ceaseless exploration of textures, materials, and design choices.

As artisans of spatial transformation, the materials they choose are paints on the canvas of the built environment.

Here, we dive deep into the world of design freedom, celebrating the rich palette of materials and colours at your disposal, and the vibrant colours that breathe life into your visions.

Materials:

The Building Blocks of Creativity

Materials are the heart and soul of design. They are the raw ingredients that sculpt ideas into tangible reality. Imagination knows no bounds, and a wide range of materials helps nourish lifelong creativity.

For those who seek a tactile and organic feel, mineral fibre is a versatile choice. Its acoustic properties make it an excellent option for spaces where tranquillity is key.

In the world of design, metal is a chameleon. It can be sleek and modern or rugged and industrial. The choice is yours, and the possibilities are limitless.

When warmth and natural aesthetics are the main target, wood wool and wood materials are definite front runners. They add a touch of rustic and soothing elegance to any space.

Design Freedom:

Where Imagination Takes Flight

Design freedom is about pushing the boundaries of convention. It's about embracing the unexpected, defying norms, and crafting spaces that leave an indelible mark. In your hands, materials become tools of expression, and the only limit is your imagination.

Consider the concept of multi-material design. The juxtaposition of metal and wood, for instance, can yield breathtaking results. Picture a corporate lobby

where the solidity of metal meets the warmth of wood, creating a harmonious blend of textures and colours that breathe life into spaces, making them dynamic and visually captivating.

Colours:

The Essence of Emotion

Colours are the emotions of design. They have the power to evoke feelings, set moods, and convey narratives. In your projects, the choice of colours sets the tone. Whether you opt for a palette that exudes serenity with soft blues and greens or one that radiates energy with vibrant reds and yellows, colours shape the ambiance.

Consider the interplay of colours with materials. A metal ceiling in a rich, deep hue can infuse drama into a room, while a wood wool wall in earthy tones can create a serene retreat. The right colour scheme can transform a space, making it feel inviting, inspiring, or even daring.

In the world of architecture and interior design, inspiration knows no bounds. Materials, textures, and colours are ready-to-use tools, offering a kaleidoscope of choices to liberate your imagination, and the canvas is waiting to be adorned.

As architects, specifiers, and interior designers, you have the power to shape environments and leave a lasting legacy. Embrace the freedom to design and watch as your visions come to life in boundless, breathtaking possibilities.



Varso Tower (© Szymon Polarski), page 30



Schwilke Architektenpartnerschaft (© Stefan Meyer), page 34



AppLike Group (© HalfenCitystudios + BAID), page 46

Achieving WELL Gold and BREEAM Outstanding.

VARSO TOWER IN WARSAW, DESIGNED BY FOSTER + PARTNERS, IS A 53-STOREY SKYSCRAPER AT THE HEART OF VARSO PLACE. THIS HUB FOR BUSINESSES AND COMMUNITIES FEATURES A SOCIAL PLAZA, 70,000M² OF PREMIUM OFFICE SPACE, AND UNIQUE CEILING SOLUTIONS.

VARSO IS A DISTINCTIVE LANDMARK THAT ACHIEVED BREEAM OUTSTANDING AND WELL GOLD CERTIFICATIONS.





Varso Tower

Warsaw, Poland

Integrated Urban Project

Designed by the award-winning studio Foster + Partners, Varso Tower stands as a 53-storey skyscraper, forming an integral part of HB Reavis' Varso Place development. At 310 metres, it is the tallest tower in the European Union.

Varso Place serves as a unique hub for businesses, tourists, and local communities, nestled at the very heart of Warsaw. With a user-centric approach, Varso aims to cultivate a creative and healthy workspace environment, extending its influence into the after-hours lifestyle for individuals working in the vicinity.

Situated at the corner of Jana Pawła II and Chmielna Street, the tower serves as a gateway to the new neighbourhood, drawing people through the building towards the public plaza on its western end, seamlessly connecting to the neighbouring structures.

For the Most Demanding Tenants

At the core of the project lies a social hub—a square enclosed within a glazed screen, animated with full-height trees and benches for people to enjoy their surroundings. This space acts as a seamless connection point between office workers, who may use it as a sit-out during breaks, and the public, providing access to the shops and restaurants in neighbouring buildings.

Featuring 70,000m² of premium office space, the tower boasts large-span floor plates that allow for multifunctional workspaces, an art-filled lobby, and a spectacular observation deck offering uninterrupted views of Warsaw's skyline. Breaking the record for the city's highest garden, Varso Tower stands as a timeless high-rise for companies looking to make a distinctive statement.

The project's uniqueness lies in its combination of different ceiling and wall solutions. Custom METAL R-H 200

panels, designed specifically for this project in 185 different variants, grace the lobby and common areas. The precise design of the ceiling required months of close collaboration between the architects and the specialist team from Knauf Ceiling Solutions.

In addition to this bespoke design, METAL Baffle Elements in black (RAL 9005), MESH Board panels, and ANTARIS mineral ceiling tiles were used throughout the project, symbolising Knauf Ceiling Solutions' ability to design both standard and bespoke modular ceiling solutions of the highest quality.

The materials' durability, high quality, and long life cycle seamlessly blend modernity with care for the environment. The Cradle to Cradle Certified® Silver METAL R-H 200 played a significant role in the building achieving BREEAM Outstanding and WELL Gold certifications.



Scan the QR Code for more on this project on the Knauf Ceiling Solutions website.

Client
Varso Tower

Building Owner
HB Reavis Group

Architect
Foster + Partners

Architect of Record
Epstein sp. z o.o.

Solutions
Custom METAL R-H 200, Rg 2516, RAL 9011
Custom METAL R-H 215, Trapezoidal, RAL 9011
METAL Baffle Element, RAL 9011
MESH Board, RB 35, RAL 9005
ANTARIS, Tegular 15, White

Photographer
© Szymon Polański

Showcasing the natural qualities of wood wool.

OVER THE YEARS, SCHWILLE ARCHITEKTEN-PARTNERSHAFT HAS CONSISTENTLY INTEGRATED HERADESIGN® PRODUCTS INTO THEIR PROJECTS.

THIS EXPERIENCE NATURALLY LED TO THE DECISION TO USE WOOD WOOL ACOUSTIC PANELS TO FURNISH THEIR OWN OFFICE, IN PERFECT ALIGNMENT WITH THEIR DESIGN PHILOSOPHY.





Schwille Architektenpartnerschaft

Reutlingen, Germany

A Vibrant, Tailor-Made Solution

“Our architectural philosophy focuses on seamlessly integrating designs into existing urban structures.”

Thomas Hartmetz, one of the firm's owners, describes their journey: re-purposing a 1950s car repair shop into an architectural office.

Preserving and re-purposing the existing building was crucial. The courtyard became a peaceful retreat within bustling Reutlingen.

To achieve ideal aesthetics and acoustics, they chose HERADESIGN® Creative “Mikado” Superfine tiles, known for their capacity to balance acoustics and aesthetics, creating a distinctive space.

The open office concept, supported by HERADESIGN® ceiling panels, improved work-flow and exceeded expectations, captivating both team members and visitors.



IN THIS SPECIFIC OFFICE PROJECT, WE DELIBERATELY OPTED FOR THE NATURAL TONE, AS IT BEAUTIFULLY SHOWCASED THE “HONEST” AND “NATURAL” CHARACTERISTICS OF THESE WOOD WOOL PRODUCTS.

—
THOMAS HARTMETZ
SCHWILLE ARCHITEKTEN-
PARTNERSCHAFT MBB



Scan the QR Code for more on this project on the Knauf Ceiling Solutions website.

Client
Schwille Architektenpartnerschaft mbB

Architect
Schwille Architektenpartnerschaft mbB

Ceilings Installer
iBAU Projektmanagement

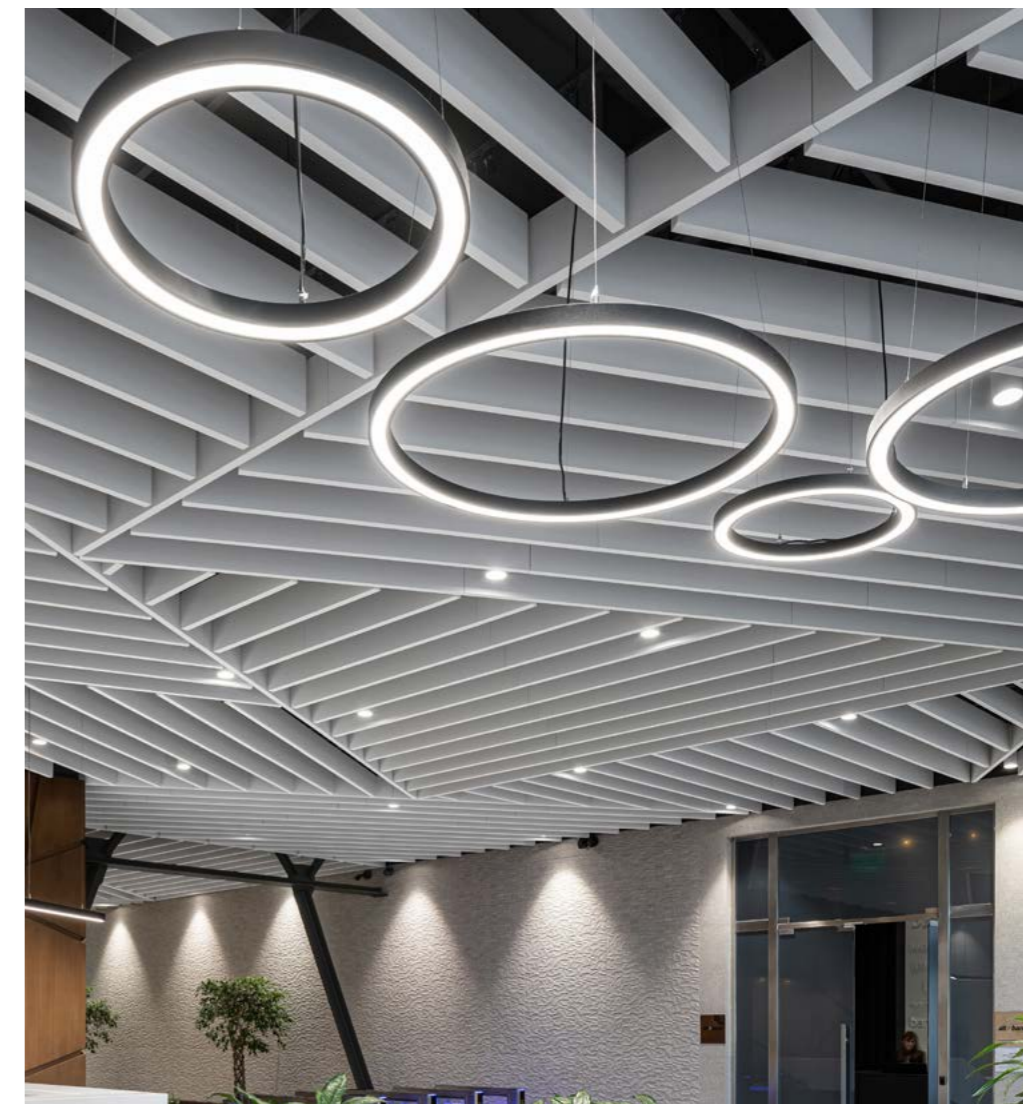
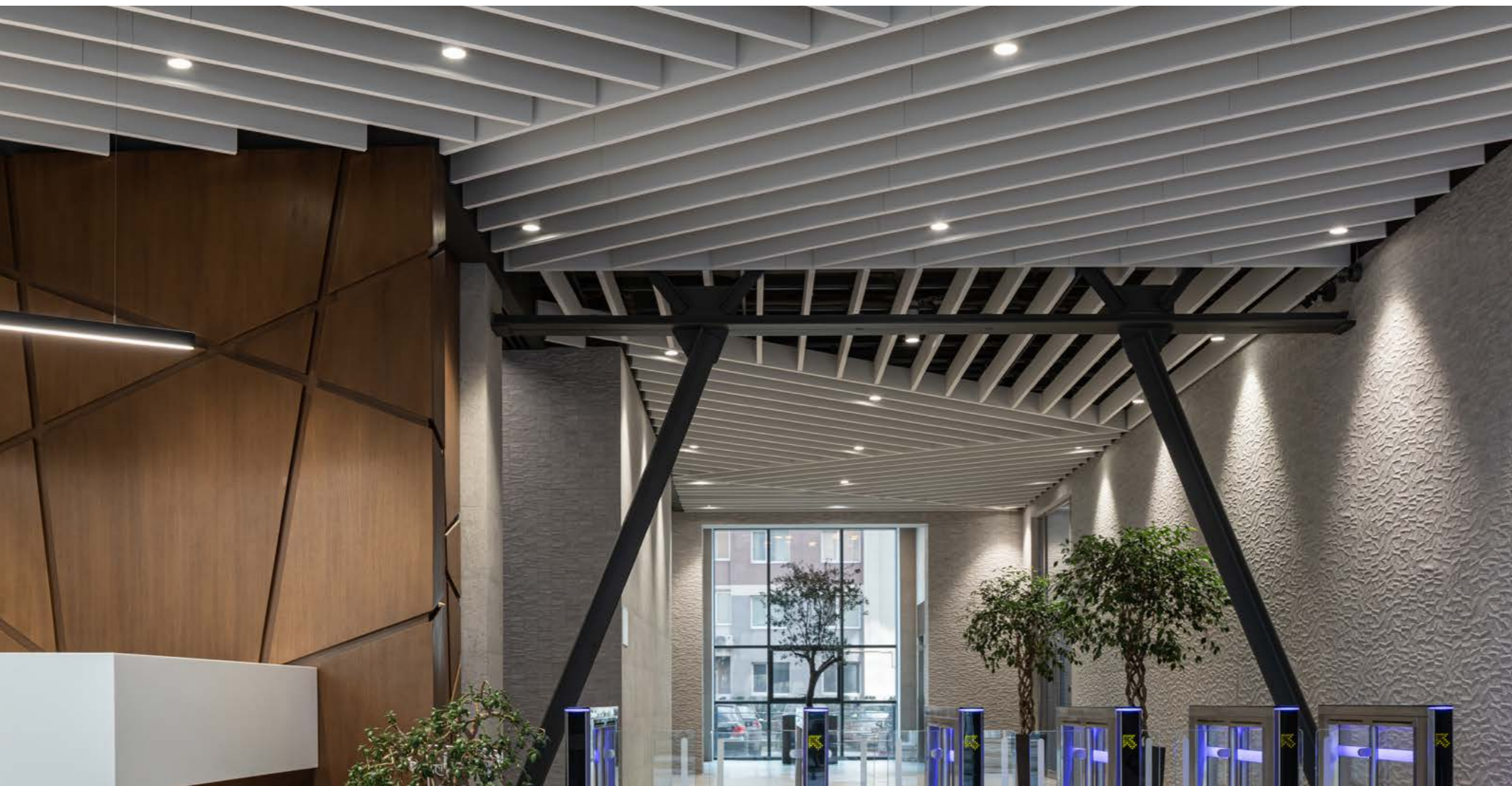
Lighting Planners
Beckert & Soanca-Pollak GmbH

Solutions
HERADESIGN® Creative Effect Mikado Superfine, Natural Tone 13

Photographer
© Stefan Meyer

A defining lobby for employees and visitors.

A NEW BUSINESS CENTRE IN THE CITY OF LVIV, DOMINANT PLAZA OFFERS A DYNAMIC AND MODERN DESIGN THAT ENTERS IN HARMONY WITH THE UKRAINIAN CITY CHARM.





Dominant Plaza Business Centre, Complex 2

Lviv, Ukraine

Embracing Lviv's Timeless Charm

The Dominant Plaza Business Centre in Lviv stands as an ambitious architectural endeavour, seamlessly blending the preservation of Lviv's unique charm while ushering in a new era of functionalities.

This visionary programme breathes new life into the space while staying true to the city's character, embodying the essence of Lviv in every detail.

With an emphasis on preserving the city's distinct character, this architectural project redefines the intersection of tradition and innovation in Lviv.

Innovation Hub

The centre accommodates offices of varying sizes, creating a versatile space that caters to both small and large businesses.

The entrance area showcases the MINERAL Baffle Element, a visually appealing and acoustically efficient floating ceiling solution.

This thoughtful design not only creates an inviting and dynamic atmosphere but also ensures the necessary sound absorption qualities, enhancing the overall experience.



Scan the QR Code for more on this project on the Knauf Ceiling Solutions website.

Client
BP-41 LLC

Architect
Yuriy Ksenzuk

Contractor
Style Solutions Ltd.

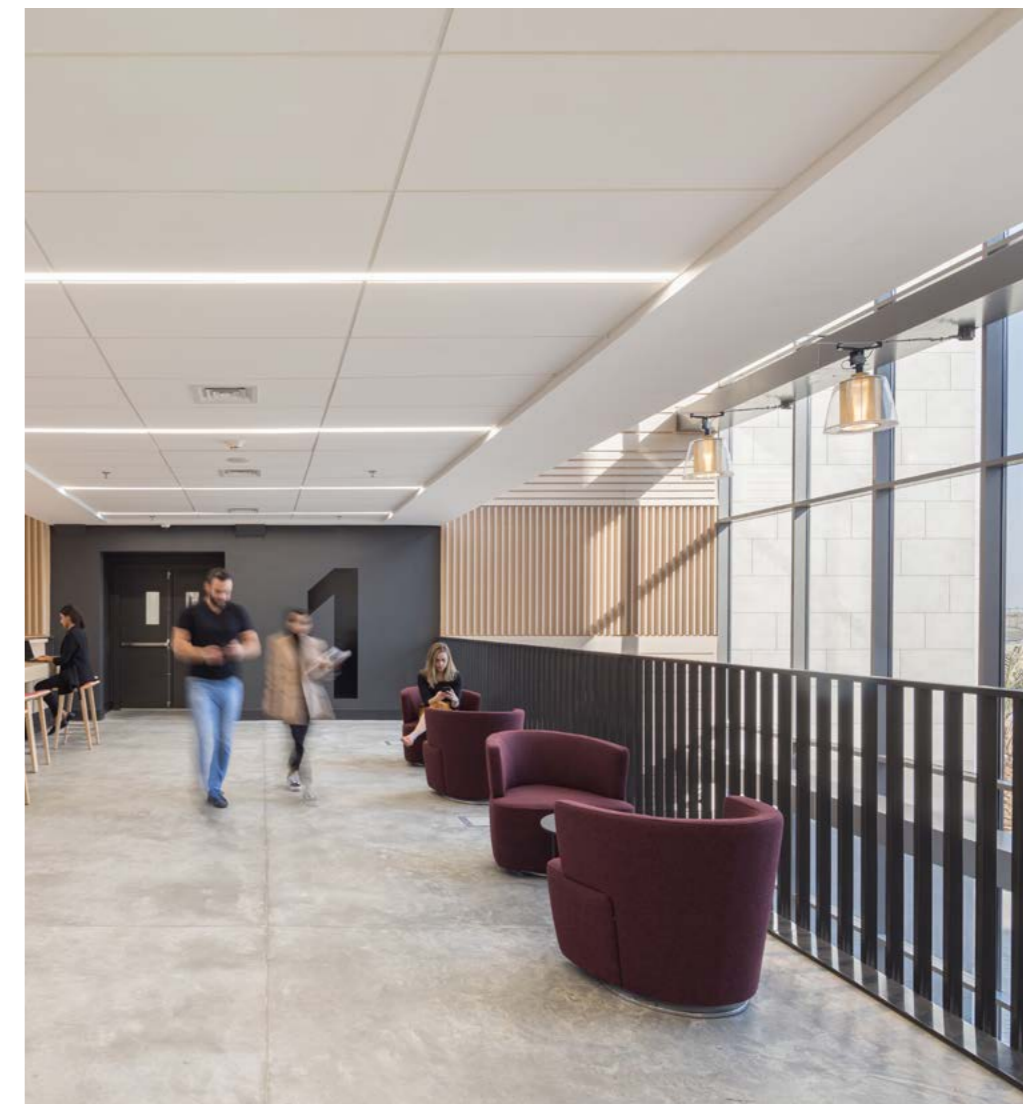
Solutions
MINERAL Baffle Element, White

Photographer
© Sergiy Kadulin Photography

Achieving a stunning colourful design.

THE AMERICAN INTERNATIONAL UNIVERSITY (AIU) IS DEDICATED TO ADVANCING EDUCATION AND PERSONAL GROWTH.

IN PURSUIT OF EXCELLENCE, AIU EMBARKED ON A TRANSFORMATIVE PROJECT THAT NOT ONLY MET HIGH ACOUSTIC DEMANDS BUT ALSO ELEVATED THE AESTHETICS OF THEIR LEARNING SPACES.





American International University

Kuwait City, Kuwait

Sound & Style Upgrade

AIU's commitment to providing top-level education led them to prioritise acoustics and design.

To meet the high acoustic requirements of classrooms and lecture halls, they opted for THERMATEX® Alpha. This choice ensured that students could focus without distraction, fostering a conducive learning environment.

But the University didn't stop at acoustics alone. They recognised the importance of an engaging and aesthetically pleasing atmosphere.

For this, they turned to HERADESIGN® Creative, achieving a stunning wall design through a splash of vibrant colours to the space, making learning visually stimulating.



Scan the QR Code for more on this project on the Knauf Ceiling Solutions website.

Client
American International University

Architect
NBJJ

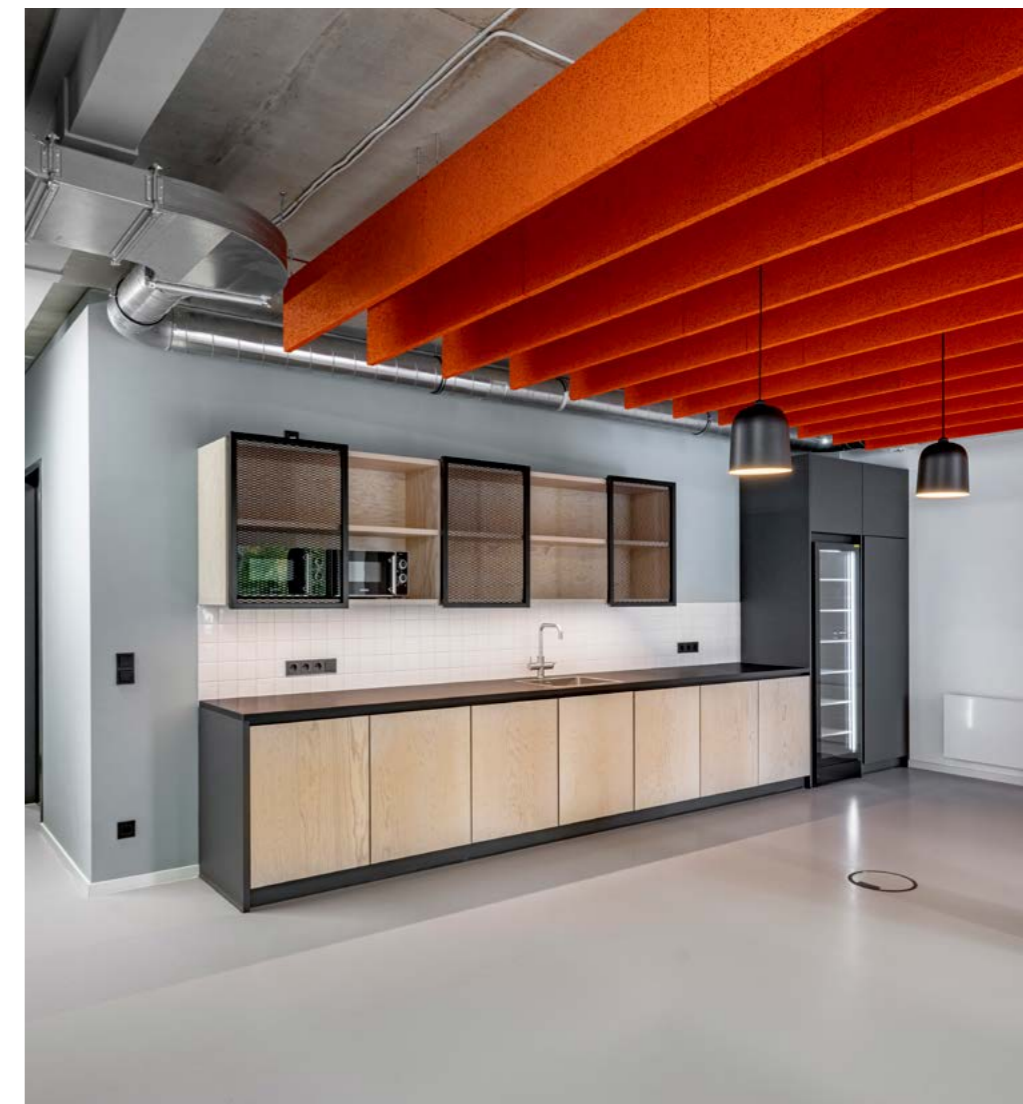
General Contractor
Sai General Trading & Contracting

Solutions
THERMATEX® Alpha, Tegular 15/90
HERADESIGN® Creative Module, Superfine, AK-01, various colours
HERADESIGN® Micro, AK-01
HERADESIGN® Superfine, AK-01

Photographer
© Matt Livy

Playing with colours to create a dynamic space.

WITH NEARLY 3,000M² OF OFFICE SPACE IN HAMBURG, APPLIKE GROUP WANTED TO CREATE A MODERN AND GRAPHIC WORK ENVIRONMENT.





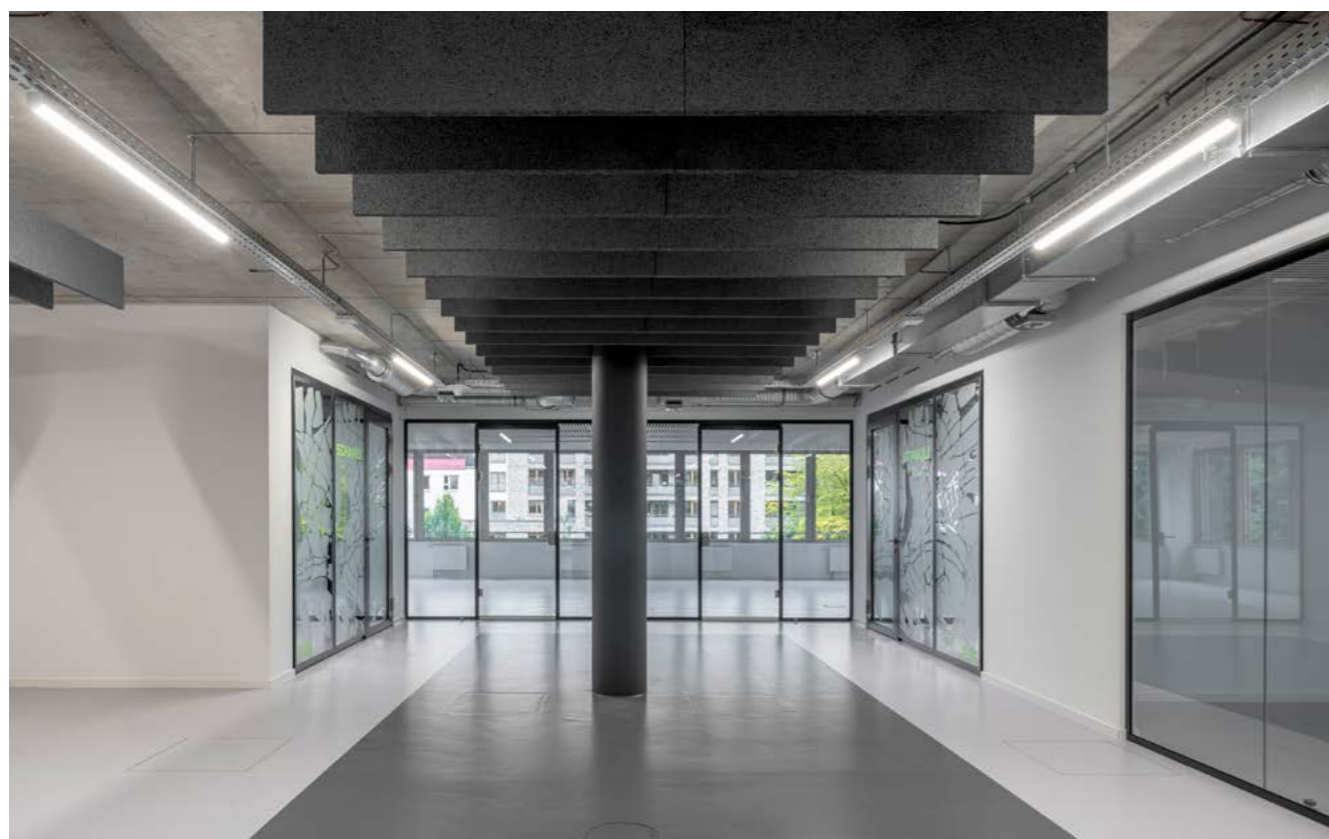
AppLike Group

Hamburg, Germany

A Bright and Playful Workspace

Designed by the architectural firm BAID, the project perfectly translates AppLike's values of openness at a fast-moving pace.

The Knauf Ceiling Solutions' 600 coloured HERADESIGN® Baffle Elements used in the project contribute to creating a bright and playful workspace while answering the client's specific acoustic requirements.



Scan the QR Code for more on this project on the Knauf Ceiling Solutions website.

Client
Gruner+Jahr / AppLike Group

Architect
BAID Architektur GmbH

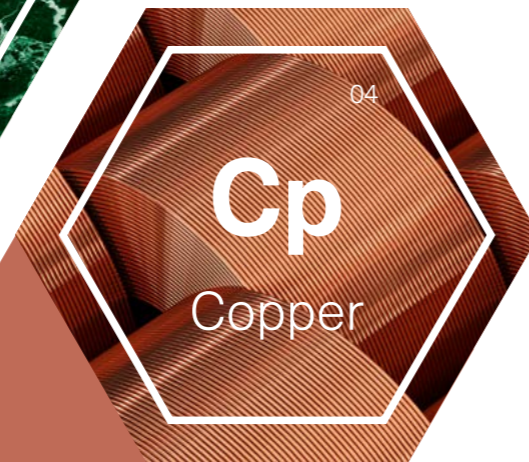
Contractor
Lindner SE

Solutions
HERADESIGN® Baffle Element, Fine, Mouse Grey, Silver Grey, Lemon Yellow, White Green, Pure Orange

Photographer
© Hafencitystudios + BAID

Be Inspired by Colour & Nature

Explore the versatility of the Vario Design colour palette, offering eight hues inspired by natural sources: Granite, Steel, Green Marble, Copper, Oak, Sandstone, Brass, and Concrete, to create comfortable and well-balanced spaces.



A result of a collaboration with design experts, the Vario Design colour palette, allows you mix and match different colour combinations across our mineral, metal and wood wool ceiling and wall solutions.

Adapting to Change

—
EMBRACING FLEXIBILITY
FOR DYNAMIC SPACES
—

In the ever-evolving field of architecture and interior design, one of the core focus remains on the creation of adaptable and flexible spaces.

The inherent mission of architects, specifiers, and interior designers is to meet the evolving demands of the contemporary workforce and inspire environments that promote productivity and innovation.

This article focusses on the three critical aspects that shape this transformative journey.

The Evolution of Workspaces

The traditional 9-to-5 office concept has undergone a significant transformation. With remote work and home offices becoming more prevalent, there is a growing need for adaptable spaces.

Retrofitting existing buildings is essential in accommodating this shift in how we work. A diverse range of materials is available to support this change, ensuring seamless integration with evolving work dynamics. Collaboration between architects, designers and building owners is crucial to understand the spatial requirements and facilitate new work methods.

The rigid, cubicle-dominated office layouts of the past are being replaced by flexible, open designs, presenting challenges in terms of both acoustics and visual comfort.

Expertise in creating adaptable ceiling solutions enables the redesign of these workspaces, allowing for easy reconfiguration to meet various needs, whether for collaborative sessions or individual focus work.

The “Home at the Office” Revolution

The pandemic has thrust the home office into prominence, integrating it as a central component of our professional lives. Architects and designers face the challenge of crafting office environments that emulate the comfort and functionality of home. In this evolving landscape, acoustic walls and ceilings emerge as key contributors, offering added value by creating workspaces that are both productive and inviting.

Acoustic solutions provided by walls and ceilings are instrumental in minimising distractions, thereby fostering concentration and effective

communication in any work environment. A dedication to choose acoustically performing solutions will effectively help mitigate disruptions, enabling individuals to focus and collaborate efficiently.

By tailoring acoustic ceilings and walls to suit the demands of this emerging trend, architects and designers are empowered to elevate the functionality and comfort of workspaces, ultimately cultivating an environment conducive to excellence.

Collaboration and Flexibility

As remote work gains traction, the importance of physical collaboration persists as vital to many businesses' success. Collaborative spaces and co-working hubs have become indispensable features of contemporary office design.

Acoustic walls and ceilings play a pivotal role in shaping these dynamic hubs, fostering creativity. They can help divide the space and visually mark identifiable spaces for collaboration, rest, intense focus or even impromptu meetings.

Flexibility lies at the core of the approach. Recognising the necessity for spaces to be agile, capable of accommodating evolving demands, and employee's' shifting working needs across the day. This adaptability ensures the enduring relevance of projects, creating environments that remain dynamic and responsive to the ever-shifting needs of businesses and workers, and still acoustically comfortable to work in .

The possibilities are limitless to craft dynamic spaces that stand the test of time.



Metropolitan Sheptytsky Information Research Centre (© Sergiy Kadulin), page 54



Vin Irsel Geveltechneek (© Fotografie Sonnegel), page 58

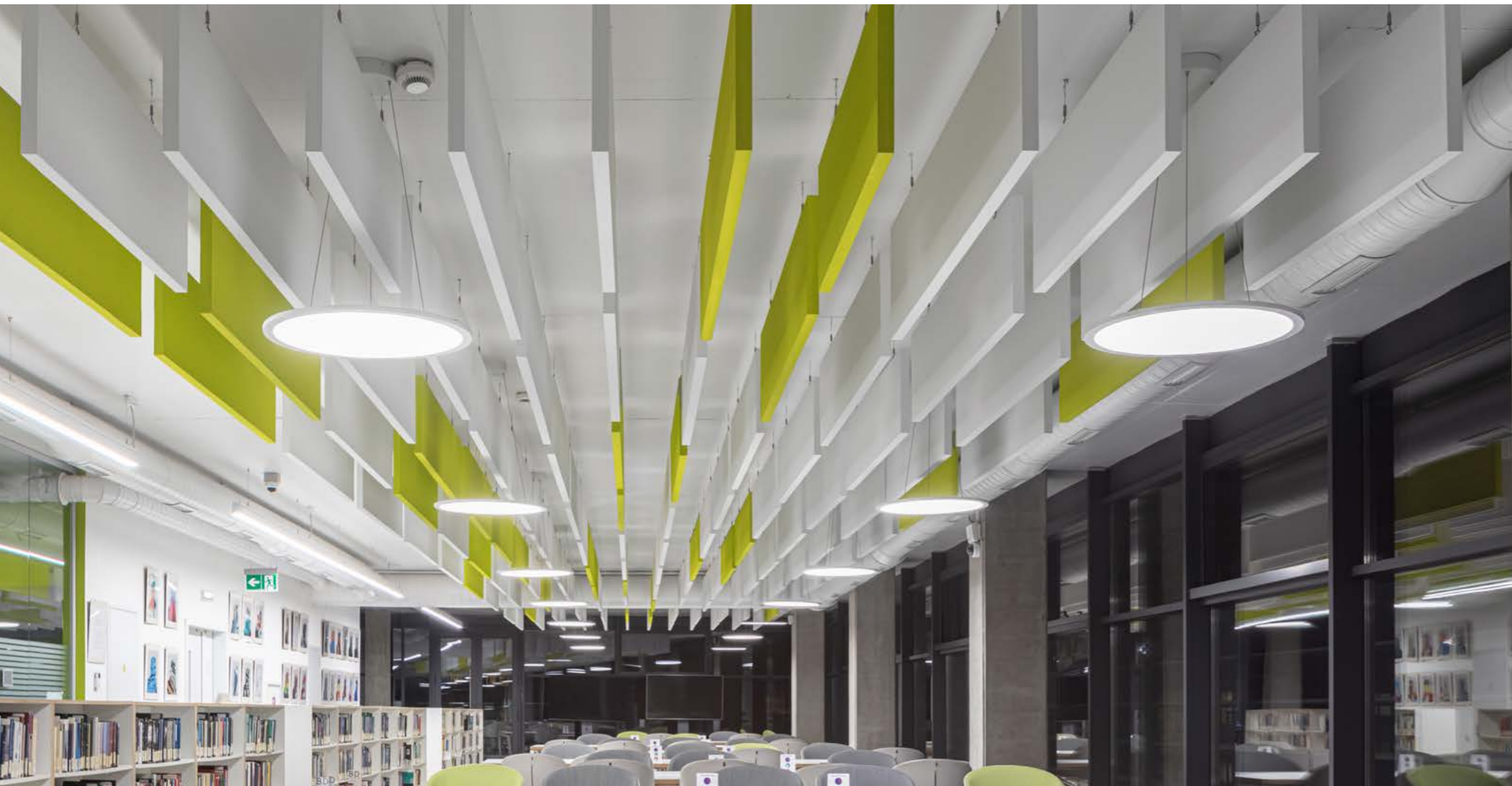


K2 Office Building (© Szymon Polarski), page 62

Education space created with flexibility at its core.

THE UKRAINIAN CATHOLIC UNIVERSITY, A MAJOR ARCHITECTURAL ENDEAVOUR, EMBODIES AN OPEN ACADEMIC COMMUNITY ROOTED IN THE EASTERN CHRISTIAN TRADITION.

ITS AIM IS TO NURTURE LEADERS WITH PROFESSIONAL EXCELLENCE FOR SERVICE IN UKRAINE AND INTERNATIONALLY.





Metropolitan Sheptytsky Information Research Centre

Lviv, Ukraine

Openness and Flexibility

At the campus's core is the Metropolitan Sheptytsky Information Research Centre, hosting a humanities library, academic and research spaces, and community areas.

The extensive library, with over 160,000 books spanning ancient to modern works, is easily accessible to readers. Specially designed quiet areas offer comfort for reading.

The building's design prioritises openness and flexibility, incorporating offices, exhibition centres, conference halls, and amenities such as a café and the university bookshop within its five-storey structure.

Designed for Comfort

The architects aimed to design all spaces with maximum flexibility, serving as venues for cultural events while creating ideal environments for research, learning, and meetings.

MINERAL Baffle Elements are combined with MINERAL Sonic Elements of various shapes to offer a distinctive range of floating ceilings with good sound absorption capabilities.

The clean, linear design of MINERAL Baffle Element harmonises with effective acoustics, to accentuate the airy design of the library, the meeting zones, and the fitness area.

To enhance comfort and optimise acoustic performance, the café area features HERADESIGN® Superfine tiles. Installed as a wall solution using the HERADESIGN® Superfine, these panels are ideal in smaller individual offices.

Public spaces and corridors are adorned with vertical METAL Baffle Elements, known for their durability and ease of maintenance, contributing to the overall brightness and acoustic comfort of the building.



THIS IS A TRULY UNIQUE PROJECT IN TERMS OF MODERN FUNCTIONAL SOLUTIONS AND ATTENTION TO CREATE A COMFORTABLE ENVIRONMENT.

—
MARIA BOKUN,
NATIONAL SALES MANAGER, UKRAINE,
KNAUF CEILING SOLUTIONS



Scan the QR Code for more on this project on the Knauf Ceiling Solutions website.

Client
Ukrainian Catholic University, Lviv

Architect
Behnisch Architekten, Slava Saluk

Contractor
Style Solutions Ltd

Solutions
MINERAL Baffle Element, RAL 9010
MINERAL Sonic Element, Circle, RAL 9010
METAL Baffle Element, Rd 1522, RAL 9010
HERADESIGN® Superfine, AK-01, White & Grey
THERMATEX® Alpha, Tegular 15

Photographer
© Sergiy Kadulin Photography

Creating an open space that values privacy.

DESIGNED BY SCHAIJK-BASED ARCHIFIT ARCHITECTEN,
THE NEW PREMISES OF VAN IERSEL GEVELTECHNIEK,
WHOSE CORE BUSINESS IS FAÇADE TECHNOLOGY, PLACE
TRANSPARENCY AT THE FOREFRONT OF THEIR CONCEPT.





Van Iersel Geveltechniek

Breda, The Netherlands

Establishing Connection through Transparency

Upon entering the spacious atrium, visitors are greeted by a clear view of the production hall, fostering an atmosphere of transparency. This sense of openness extends throughout the building, creating a visually captivating exterior with aluminium strips on the façade and striking ceiling solutions in common areas, offices, and corridors—a proud showcase of the exceptional work within.

Traditionally confined to enclosed offices, the staff experienced limited interaction. Illse Withagen's design transforms this, encouraging openness, accessibility, and collaboration, while respecting the need for privacy.

The shift from traditional to modern design principles extends to the ceiling design. Collaborating with the client and Knauf Ceiling Solutions, Withagen navigated this transition, incorporating various ceiling systems to optimise functionality and aesthetics.

Embrace Peace and Quiet

The final design incorporated various ceiling systems, including VARIOLINE Colour mineral ceiling tiles in grey for sound absorption in offices and meeting rooms.

In the corridors, a grey METAL F-L 601 ceiling system with special perforations was used to achieve an industrial aesthetic.

The entrance and café areas showcase the Knauf Ceiling Solutions seamless acoustic ceiling, featuring a white mineral ceiling system with a durable, elegant, and finely textured finish.

This system's monolithic appearance provides a seamless look, and its Class A sound absorption ensures excellent acoustic control.



THE NETHERLANDS IS TYPICALLY KNOWN FOR ITS MORE TRADITIONAL APPROACH IN CEILING SYSTEMS, BUT THIS PARTICULAR PROJECT DEMANDED A UNIQUE AND INNOVATIVE SOLUTION.

—
ILLSE WITHAGEN,
ILLSE WITHAGEN
INTERIEUR-ARCHITECTUUR



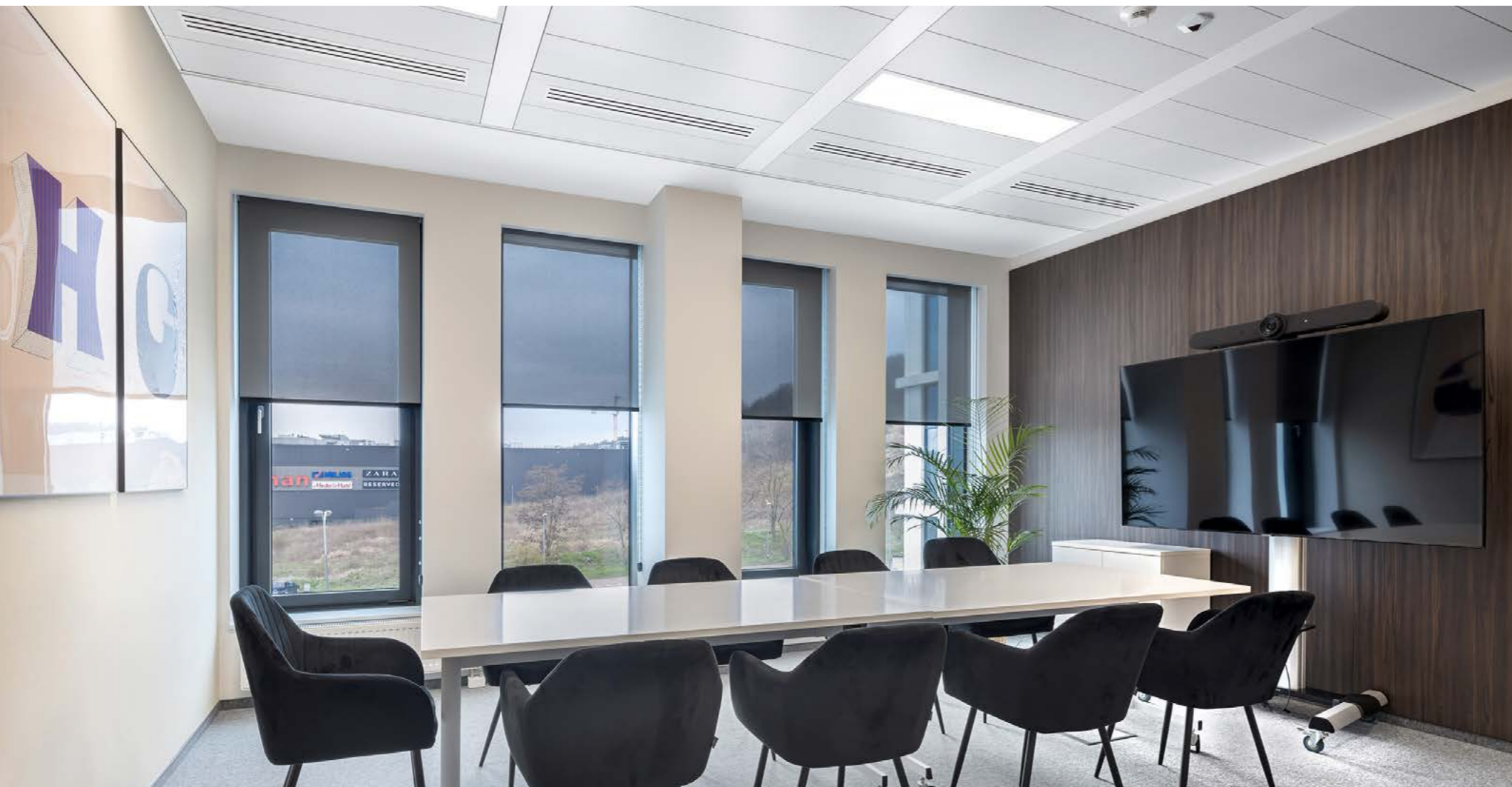
Scan the QR Code for more on this project on the Knauf Ceiling Solutions website.

- Client**
Van Iersel Geveltechniek
- Architect**
Archifit Architecten, Ingenieurs en Bouwbegeleiders
- Interior Architect**
Illse Withagen Interieurarchitectuur
- Contractor**
Van der Heijden Bouw en Ontwikkeling
- Ceiling & Walls Installer**
Verhoeven Montage
Pennings Akoestisch Altbouwen
- Solutions**
Seamless Acoustic Ceiling
METAL F-L 601, Tv 26845, RAL 7012
VARIOLINE Colour, Board, RAL 7030
- Photographer**
© Fotografie Sonnega

Balancing architectural history and authenticity.

A SIX-STOREY MODERNIST MARVEL, KIELECKA 2 BLENDS 1930S STYLE, BUSINESS CHARACTER AND OCCUPANT COMFORT.

ADORNED WITH METAL CEILING SOLUTIONS, IT EFFICIENTLY ELIMINATES PARTITIONS, PRESENTING AN IMPRESSIVE AESTHETIC WHILE ADDRESSING SOUND REVERBERATION.





K2 Office Building

Gdynia, Poland

Architectural Elegance

The Kielecka 2 (K2) office building, a six-storey masterpiece, showcases a seamless blend of modernism through its distinctive shape and intricate architectural elements.

Its façade, adorned with white, rounded profiles reminiscent of sails and ship architecture, pays homage to the 1930s Gdynia "Streamline" style.

This design not only exudes sophistication but also emphasises the business character of the space, creating a visually captivating and memorable structure.

Metal Symphony

At the core of Kielecka 2's design lies a commitment to both durability and high quality, exemplified by the choice of metal ceilings.

The METAL B-H 300 system, with its long, seamless white panels, offers more than just a visually cohesive appearance.

These panels, carefully selected for their durability, eliminate visible divisions between them, presenting an efficient and impressive solution.

Perforated and equipped with an acoustical inlay, these metal ceilings address the issue of reverberation, providing an aesthetically pleasing and acoustically comfortable environment.

Innovation and Comfort

Beyond its architectural allure, this office building prioritises the well-being of its occupants.

The architects have successfully merged innovation with practical functionality, creating a space that not only captures the essence of modernism but also ensures a harmonious blend of business elegance and user comfort.

The project stands as a testament to the thoughtful integration of design and functionality in the heart of architectural innovation.



Scan the QR Code for more on this project on the Knauf Ceiling Solutions website.

Client
Vastint Poland Sp. z o.o.

Architect
APA Wojciechowski

Contractor
C. Hartwig Gdynia S.A.

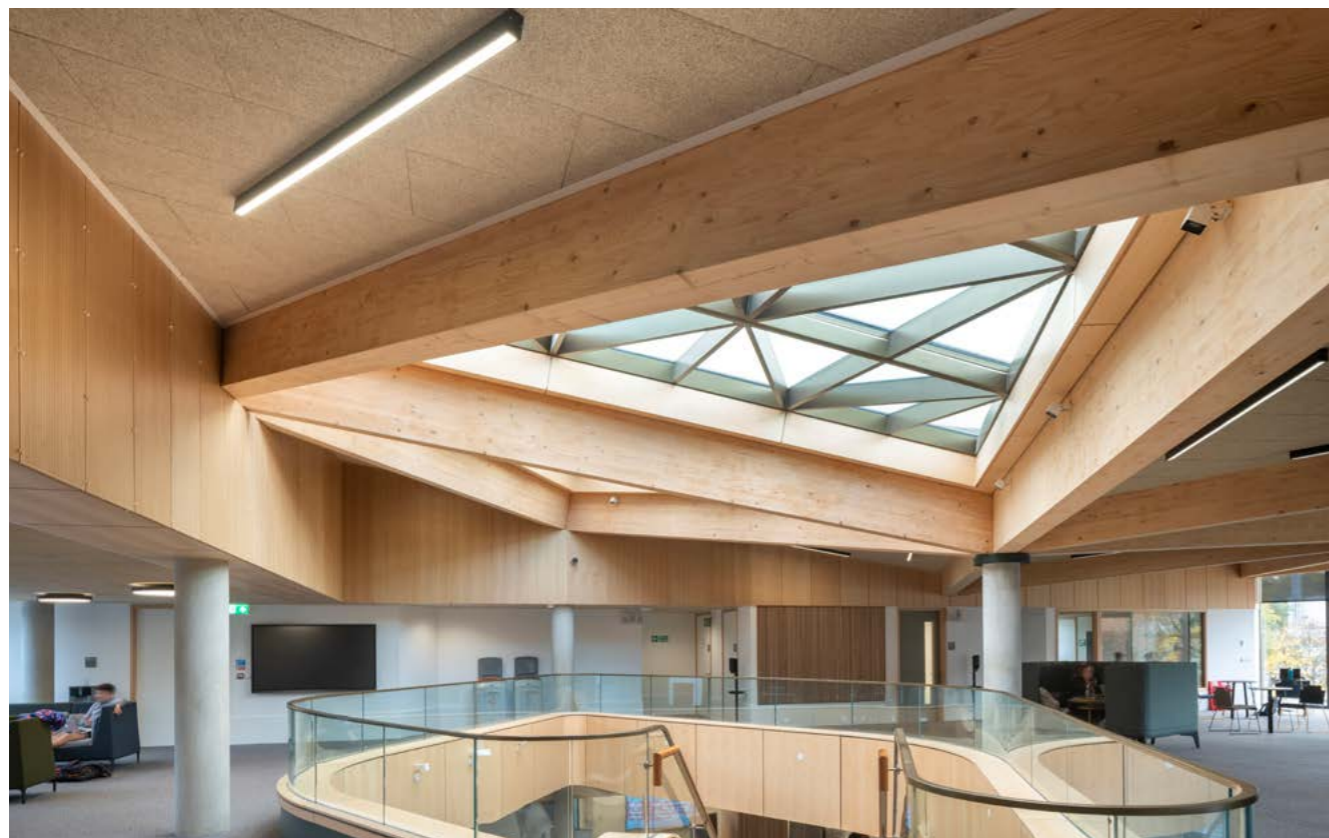
Solutions
METAL B-H 300, Rd 1522

Photographer
© Szymon Polański

Awarded best building in the education sector.

CAMPUS CENTRAL AT THE UNIVERSITY OF STIRLING
SCOOPED THE AWARD FOR THE BEST BUILDING IN
THE EDUCATION CATEGORY IN THE 25TH SCOTTISH
DESIGN AWARDS, JULY 2022 AND WON THE SCOTTISH
REGIONAL CATEGORY FOR THE NATIONAL RICS
AWARDS 2022 FOR COMMERCIAL DEVELOPMENT.





Campus Central, University of Stirling

United Kingdom

Landmark Redevelopment

The £21.7 million Campus Central project at the University of Stirling involved the refurbishment of existing 1970s buildings and 1980s extensions linked by the development of a new modern central three storey triangular structure.

This exciting project, represents one of the University's biggest infrastructure investments since its foundation in 1967.

Bringing the Outside In

The new extension provides space for the Institute of Advanced Studies, Student Services Hub, student study and a new entrance to MacRobert Arts Centre. The project connects the Students' Union, Library, Chaplaincy, Retail, Catering and MacRobert Arts Centre in a flexible environment designed to support the University community.

The aspiration was to enhance the entrance setting of Queen's Court by putting it at the heart of the University.

The life and activity of the new building spills out onto a pedestrian friendly environment that can flexibly accommodate a range of uses throughout the year.

Seamlessly linking three buildings together presented structural and design challenges particularly for the ceiling landscape.

With different ceiling heights and the creation of a 5,000m² space, a versatile ceiling material providing high acoustic performance was required.

Refurbishment Challenges

Retaining the original late modernist building's structurally impressive interior, the new extension offers a flexible form with exposed concrete and cross laminated timber.

This is all complemented by a warm palette of natural materials including Cradle to Cradle Certified® Gold HERADESIGN® Superfine natural wood wool acoustic panels.

The choice of Knauf Ceiling Solutions materials was vital for the design, helping define the different student spaces and ensure optimum sound absorption.

Installed in a natural tone colour throughout the campus, HERADESIGN® created a seamless and unified space, visual impact and optimal acoustic control.



HERADESIGN®'S NATURAL TEXTURE WAS JUST ENOUGH TO BLUR THE DIFFERENCE IN CEILING HEIGHTS AND BRING COHESION TO THE NEW DEVELOPMENT WHICH MERGES THREE LARGE SPACES.

WE HAD WORKED WITH HERADESIGN® BEFORE, IT PERFORMS REALLY WELL ACOUSTICALLY AND WE LOVE ITS LOOK. THIS WAS A CHALLENGING PROJECT AS WE WANTED TO ACHIEVE A BIG CHANGE THROUGH A LIGHT TOUCH INTERVENTION WHILST KEEPING THE OUTLINE OF THE EXISTING STRUCTURE.

—
ANA CRISTOBAL,
PAGE PARK ARCHITECTS



Scan the QR Code for more on this project on the Knauf Ceiling Solutions website.

Client
University of Stirling

Architect
Page Park Architects

Principal Contractor
Robertson Construction

Contractor
Linear Projects

Solutions
HERADESIGN® Superfine, VK-10, Natural Tone 13

Photographer
© Alan McAteer

Nurture a cocooning sound environment.

INTRODUCING UNIFORCE, A PREMIUM-CLASS FITNESS CENTRE THAT'S NOT JUST A DESTINATION BUT A TRANSFORMATIVE EXPERIENCE.

THIS WELLNESS SPACE CATERS TO BOTH AMATEURS AND SPORT PROFESSIONALS, INVITING THEM TO EMBRACE A HEALTHIER LIFESTYLE. THE LAVISH AND COCOONING CEILING AND WALL FINISHES ADD A TOUCH OF LUXURY, ELEVATING THEIR FITNESS JOURNEY.





UniForce Fitness Centre

Lviv, Ukraine

HOLISTIC WELLNESS EXPERIENCE

A comfortable sports centre, UniForce, has been opened in Lviv on Melnyk Street.

This fitness and wellness space has an area of approximately 4,000m² and offers various facilities including two large swimming pools, a spacious fitness room equipped with modern strength, cardio, and functional exercise equipment, dance, yoga, and pilates rooms, as well as a large and cosy spa area.

A Palette of Materials

In terms of aesthetics and functionality, suspended ceilings have been used for the administrative and office areas of the facility.

The generously fitted reception and entrance area is equipped with the METAL R-H 200 Hook-On ceiling solution, which adds, due to the selected colour, a decorative copper accent.

Corridors, small utility rooms, and individual offices are fitted with a Cradle to Cradle Certified® Bronze MINERAL ceiling solution, specified in long board panels, creating a bright and acoustically effective atmosphere.

To further enhance the overall design, Cradle to Cradle Certified® Gold HERADESIGN® Fine in a screw mounting wall installation, has been used in the large conference room, seamlessly integrating into the colour scheme.



Scan the QR Code for more on this project on the Knauf Ceiling Solutions website.

Client
LEOLAND Sports and Entertainment Center

Architect
Gryzyuk I., Kishta I.

Contractor
Style Solutions Ltd.

Solutions
METAL R-H 200, Copper Colour
HERADESIGN® Fine, Screw Mounting Wall, White
MINERAL Ceiling Solution

Photographer
© Sergiy Kadulin Photography

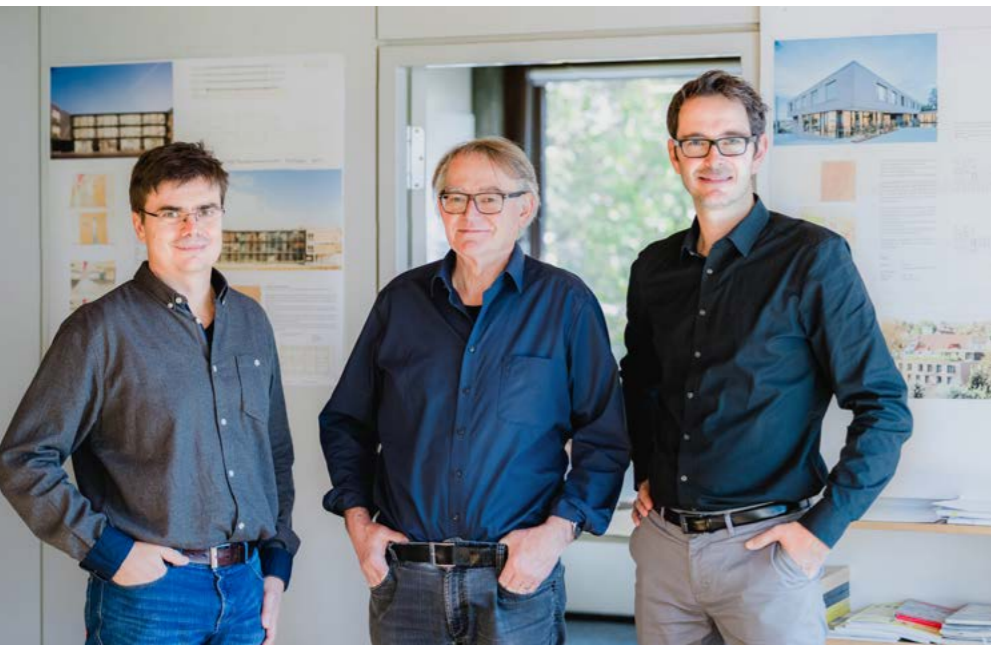
HERADESIGN®

Designed to be reusable

AN INTERVIEW WITH THOMAS HARTMETZ, ARCHITECT
AT SCHWILLE ARCHITEKTENPARTNERSCHAFT MBB,
ON USING HERADESIGN® WOOD WOOL PANELS IN THEIR OWN OFFICE.



Schwille Architekt Partnerschaft (© Stefan Meyer), page 34



[From left to right] Andreas Ertel, Dipl.-Ing. Architect (FH), Ulrich Schwille, Dipl.-Ing. Architect, and Thomas Hartmetz, Dipl.-Ing. Architect, from Schwille Architekt Partnerschaft (© Melanie Schneider)

Could you take us through your decision-making process behind re-purposing a 1950s car repair shop into your new office? How did the choice align with your design philosophy?

In recent years, the workshop premises were solely utilised as storage rooms and car parking spaces. The inner courtyard lay extensively paved and largely neglected. The ground floor area remained, figuratively speaking, dormant!

This area stood in Oststadt, in the eastern outskirts of Reutlingen, ripe for transformation into a creative hub with some dedication and ingenuity, and made it our new main office. (See the full project on page 34)

As architects, this presented a thrilling challenge, particularly in our endeavour to fashion our new office space within these walls.

Given your focus on seamlessly integrating designs into re-purposed buildings, how does the firm approach sustainability in its projects?

In today's world, tackling projects without considering sustainability is no longer feasible.

Our design ethos consistently prioritises the preservation of existing buildings and their progressive development.

The workshop's existing elements provided a solid foundation for our endeavours.

The use of HERADESIGN® Creative is highlighted for balancing acoustics and aesthetics. Can you share more about how these impact better work-flow and well-being in workspaces?

As we aimed to realise the concept of the open-plan office, while simultaneously considering the issue of acoustics.

From the experience acquired on previous projects completed with HERADESIGN® (primarily in kindergartens, schools, and care homes), we knew the Creative ceiling line would fully address both the architectural requirements and the acoustic challenges.

With HERADESIGN®, how do you see the longevity and durability of wood wool acoustic panels contributing to the overall design and functionality of a project?

The HERADESIGN® wood wool acoustic panels are designed to be both easily dismantled and reused.

It embodies true Cradle to Cradle Certified™ perfection!

How would you describe the key design philosophy and approach of Schwille, especially in terms of refurbishing existing structures?

In the case of the Schwille Architektenschaft, and many of our previous projects, we always endeavour to preserve the existing portfolio.

We utilise the built environment at our disposal as a foundation, striving to develop and transition it to its next iteration as effectively as possible.

Considering the emphasis on aesthetics, how does the firm strike a balance between achieving visual appeal and meeting the functional requirements of a project?

There is also a third aspect: the costs. In public projects, this is the primary focus. The HERADESIGN® panels offer a good balance between design, economy, and functionality.

When combined with various materials and colours, the wood wool panels enable the creation of a rich palette of attractive designs.

Based on past projects, are there any key lessons or insights that you have gained in terms of sustainable design, adaptive reuse, or creating optimal working environments?

At first, users, tenants and building owners are critical regarding the surface or material used. Many are familiar with wood wool panels used in underground car parks or utility rooms.

However, when they witness the result and, in particular, experience the acoustic effect within the rooms, they become highly enthusiastic.

This feeling reaffirms our selection of material. A good example here: the new HERADESIGN® ceiling installed in our office became an immediate focal point for every visitor. So much so that we receive constant inquiries about it.

Collaboration Made Easy

—
EMPOWERING PEOPLE WITH
USER-FRIENDLY SOLUTIONS
—

With architecture and interior design, one of the keys to success lies in seamless collaboration.

Architects, specifiers, interior designers, and installers are the visionary creators of spaces that define our environments.

There's a profound understanding of the importance of teamwork and collaboration between industry professionals and talented creators.

The mission is to make every step of the process, from planning and designing, to installation, maintenance and disassembly, as frictionless as possible, all while prioritising sustainability through recycling.

Installation Re-imagined

When it comes to architectural projects, the installation phase can be both thrilling and daunting. Architects and interior designers pour their creativity into designs that push the boundaries of aesthetics and functionality.

Acoustic ceiling solutions are crafted with easy installation in mind, enabling architects and installers to seamlessly bring projects to life. Comprehensive support is provided throughout the installation phase, ensuring projects stay on track and align with the original vision.

Maintenance Made Simple

Once a project is complete, the focus shifts to maintenance. The commitment to user-friendly solutions extends beyond installation. The emphasis is on maintaining a pristine and functional space, which is facilitated by ceiling solutions designed for easy maintenance.

Building owners can rely on products that are both aesthetically pleasing and practical for upkeep. With accessible maintenance and support, any necessary actions are hassle-free, allowing designers to concentrate on the long-term beauty and functionality of their creations.

Thinking Beyond Lifespans

In a world increasingly aware of environmental impact, recycling and responsible disposal are crucial. Collaboration with architects, specifiers, and interior designers extends beyond a project's lifespan, considering the end game as well.

Ceiling solutions are designed for easy disassembly and recycling, facilitating renovations, retrofitting, or updates with minimal waste. Close collaboration ensures materials can be re-purposed or recycled, contributing to a greener future.

Teamwork: The Heart of Success

Firmly believing that teamwork is the heartbeat of every successful project, there is a deep appreciation for collaboration between the team and project stakeholders.

The commitment to open communication, mutual understanding, and shared goals empowers everyone involved. Together, spaces are transformed into functional works of art, leaving a lasting impression.

The world of architecture and interior design thrives on collaboration, with dedication to installation ease, maintenance simplicity, and sustainability reflecting a commitment to empowering industry professionals. Together, a world where beauty, functionality, and environmental responsibility coexist harmoniously is built.



Graded School Indoor Swimming Pool (© Alessandro Couto), page 78



South32, Melrose Place (© HHP Photography - Matthew Dyson), page 82



Faculty of Law, University of Groningen (© Dion de Bakker), page 86

High-humidity-resistant ceilings strikes gold.

FOUNDED IN 1920 BY THE AMERICAN CHAMBER OF COMMERCE, IN PARTNERSHIP WITH SIX AMERICAN COMPANIES, GRADED SCHOOL IS A PRIVATE, CO-EDUCATIONAL, NON-SECTARIAN, NON-PROFIT DAY SCHOOL THAT FOLLOWS AN AMERICAN CURRICULUM WITH INSTRUCTION IN ENGLISH.





Graded School Indoor Swimming Pool

São Paulo, Brazil

Inspiring Challenge

With a vision of empowering young individuals to reach their potential and make a positive impact on the world, the Graded School of São Paulo takes every step necessary to achieve this goal.

Upon completing their athletic centre and indoor swimming pool, the building was equipped with solar heating systems to warm the swimming pool and the water in the changing room showers.

Inside the swimming pool area, there were three key challenges to address: the necessity for a hygienic, high-humidity-resistant ceiling solution that provides excellent sound absorption to reduce the inherent noise in such spaces.

The result is a pristine-looking environment that invites pupils to excel not only in sports but also in academics, allowing them to perform at their best.



Scan the QR Code for more on this project on the Knafceiling Solutions website.

Client
Graded School São Paulo

Architect
Zanettini Arquitetura

Solutions
HYGENA Aquatec, Board, White

Photographer
© Alessandro Couto

Creating a space inspired by South Africa's heritage.

FROM A WELCOMING RECEPTION TO FORMAL AND INFORMAL MEETING SPACES, AND A DIGITAL ART LIBRARY, THE NEW JOHANNESBURG SOUTH32 OFFICES ON MELROSE ARCH SYMBOLISE THE COMPANY'S FOCUS ON EMPLOYEES' WELLNESS AND COLLABORATION.





South32, Melrose Arch

Johannesburg, South Africa

Spaces that Connect

South32, has redesigned its new offices in Johannesburg to align with their aspirational pillars: lifestyle, connectivity, and flexibility.

This follows a group-wide transformation strategy initiated in 2019, accelerated by the pandemic, which prompted new ways of working at an unprecedented pace.

Consolidating their premises from three levels to a single floor plate, the Johannesburg project aimed to create a work environment promoting productivity, wellness, and acknowledging South African heritage.

The entire workspace prioritises safety and shapes how people perform and feel. It adopts an open-space collaborative format, dividing it into "neighbourhoods" of activity zones.

Collaboration Across the Globe

The installation of METAL Baffle Elements across the open plan creates a striking and unified linear look, serving as an efficient solution for sound absorption and acoustical comfort.

The project's conclusion marks a defining milestone, culminating in a remarkable journey of collaboration and innovation.

Teams from South Africa, Australia, and Europe worked together to deliver an avant-garde solution, involving a diverse team of architects, project managers, contractors, and distributors. All contributed to bringing the vision to life with professionalism and precision.

The seamless collaboration between the customer, sales, factory, and installer stands as a testament to Knauf Ceiling Solutions' commitment to excellence.



Scan the QR Code for more on this project on the Knauf Ceiling Solutions website.

Client
South32, Johannesburg

Architect
Profica, Johannesburg

Contractor
Trend Group, Johannesburg

Solutions
METAL Baffle Element, RAL 9010

Photographer
© HHP Photography (Matthew Dyson)

Fostering a creative and dynamic environment.

ESTABLISHED IN 1614, THE UNIVERSITY OF GRONINGEN CONSISTENTLY RANKS AMONG THE WORLD'S TOP 100 UNIVERSITIES.

ITS FACULTY OF LAW, WITH A NEARLY FOUR-CENTURY HISTORY, IS A LEADING DESTINATION FOR INTERNATIONAL LAW STUDIES.





Faculty of Law, University of Groningen

Groningen, The Netherlands

Open and Transparent

Purchased in 2014, the old library on Oude Boteringestraat—a significant street in Groningen's old town—has undergone redevelopment and is now the new home of the Faculty of Law.

The University of Groningen partnered with the Spanish architectural firm Cruz y Ortíz, known for their work on the Rijksmuseum in Amsterdam.

Following an expansion phase that aligns with the original building's design, the former library on Oude Boteringestraat has been transformed into workspaces filled with natural light, a moot court for law students, various classrooms, and ample collaborative spaces.

Under One Roof

To accommodate the research and teaching activities of the faculty, 6,900m² of offices and bright workspaces have been created. These new premises offer an ideal opportunity to harmonise the building, organisation, education, and research.

Previously, the faculty was scattered across multiple locations, but now all academic and support activities are centralised in a single main building.

This transformation fosters a new collaborative working environment and dynamic interaction between staff and students in both work and study.

To ensure top-ranking acoustic comfort and a high level of light reflectance, the architectural firm chose the Knauf Ceiling Solutions seamless acoustic ceiling with Class A sound absorption, in addition to THERMATEX® Alpha One mineral tiles. Both solutions excel in terms of acoustics and natural light reflectance.



Scan the QR Code for more on this project on the Knauf Ceiling Solutions website.

Client
FRUG – Faculteit Rechtgeleerdheid Universiteit Groningen

Architect
Cruz y Ortíz Arquitectos, Ana Carmargo

Main Contractor
Visser & Smit Bouw

Contractor
Unipé Albouw, Ernst Unige
Slukom BV, Marc Rolink

Solutions
Seamless Acoustic Ceiling
THERMATEX® Alpha One, Board / Tegular 15 / Tegular 24, White

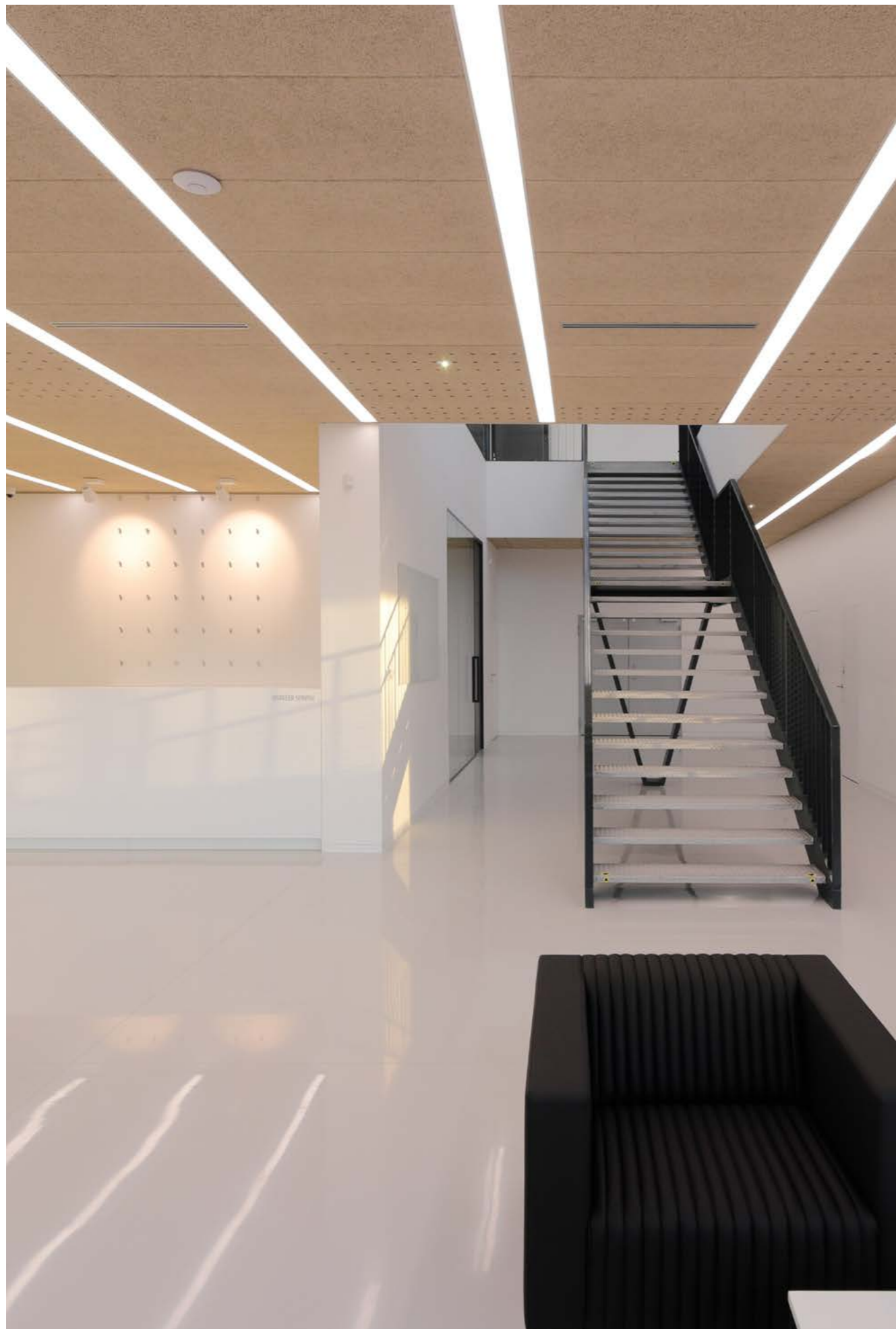
Photographer
© Dion de Bakker

Conceiving a space with practical use in mind.

THE NEW ZEPPELIN LOCATION IN BRATISLAVA INTEGRATES ADMINISTRATIVE, STORAGE, AND SERVICE OPERATIONS EFFICIENTLY AND WITH ARCHITECTURAL FLAIR.

THE INTERIOR SPACES ARE THOUGHTFULLY DESIGNED TO PRIORITISE PRACTICAL UTILITY.





Zeppelin SK s.r.o Industrial Area

Bratislava, Slovakia

Efficient and Low Emissions

The black and yellow corporate design, characteristic of this brand, is an essential element of this building's identity.

This identity is meticulously maintained within the interior, which features a vibrant design, including an eye-catching graphic information system.

Acoustically effective, HERADESIGN® Superfine Plus wood wool ceiling solution was chosen for this project and accentuates perfectly these elements.

It brings clear lines, an organised ceiling structure, a subtle natural colour palette, and an overall inviting atmosphere to the space.

A ventilation system, positioned above the HERADESIGN® panels, allows an efficient airflow. Through the large perforations in the panels, specified to the requirements of the system's supplier, air inlets and outlets ensure optimal ventilation and functionality throughout the space.



Scan the QR Code for more on this project on the Knauf Ceiling Solutions website.

Client
Zeppelin SK s.r.o.

Architect
Pauliny Hovorka Architekti, PHA, s.r.o.

Contractor
GP stav Trnava s.r.o.
LEMARCK Slovakia s.r.o.

Solutions
HERADESIGN® Superfine Plus, AK-01, Natural Tone 13

Photographer
© Branislav Hovorka

A space that rewards new shopping experiences.

WHAT WAS ONCE A PAPER FACTORY IS NOW A SHOPPING AND LEISURE CENTRE IN ZURICH.

STANDING ON THE BANKS OF THE RIVER SIHL, THE MALL HOUSES SHOPS, BOUTIQUES, MOVIE THEATRES, A FITNESS CENTRE AND SEVERAL RESTAURANTS AND BARS.





Sihlcity Mall

Zurich, Switzerland

Naturalness

The architectural firm MACH made the interior redesign of the mall and the façade at the entrance to create a unique, distinctive identity focused on the aspects of space, atmosphere, and materialisation.

It was essential to create a natural environment inside the mall to introduce light and make the outside tangible.

The interior space is re-experienced using authentic materials such as wood, metal, and stone to emphasise the natural aspect.

Easy Orientation

The building radiates openness and spaciousness, allowing people to experience every space and easily find their way around. A large spiral staircase forms the centre of the interior and facilitates orientation.

The atmosphere is warm and gentle. The lighting and natural materials create a pleasant atmosphere and invite visitors to linger.

Better Experiences

In this renovation project, a new ceiling design was crucial to improve the mall's atmosphere. The METAL R-H 200 ceiling, known for its easy maintenance and unique layout, proved ideal. It accommodates vertical accents and indirect lighting, creating a reflective surface.

To achieve a uniform look, a gasket-free approach was used, creating a clean appearance while integrating essential elements. The ceiling's extramicro perforation Rg 0701 and integrated acoustic fleece enhance acoustic comfort.

Finished in RAL 9016, the ceiling seamlessly integrates with the overall design. The outcome is a harmonious fusion of aesthetics and functionality, enhancing both visual and acoustic aspects of the mall's interior spaces, elevating them to extraordinary experiences.



Scan the QR Code for more on this project on the Knauf Ceiling Solutions website.

Client
Sihlcity Mall

Architect
MACH Architektur GmbH

Contractor
ISOLAG AG

Solutions
METAL R-H 200, Rg 0701, RAL 9016

Photographer
© David Willen



Embark on a Journey

with Knauf Ceiling Solutions

Advisory note

All photographic and design elements supplied in this brochure do not necessarily reflect any recommendation by any of the companies named in this brochure as to the proper use or recommended methods of installation of suspended ceilings and are supplied only as informative material. For technical reasons in printing, differences may appear between colours printed in this brochure and the actual product. The choice of colours should always be made from a sample of the product. All statements and technical information contained in this brochure, or any publication of the companies named in this brochure, relating to Knauf Ceiling Solutions products are based on results obtained under laboratory test conditions. It is the responsibility of the user to verify with the seller of the products in writing that such statements and information are appropriate to the specific use intended. Sales of the products and liability of the selling companies are in accordance with the terms and conditions of sale of the selling company. All product specifications are subject to modifications without prior notice.

KNAUFCEILING
Solutions