

# ***KNAUF***

## ***Sustainability at Knauf: local action, future impact***

Knauf Gypsum Australia's sustainability commitments: building for generations



***Build on us.***





## Contents

|   |    |
|---|----|
| Foreword  | 4  |
| What sustainability means to Knauf in Australia       | 5  |
| Knauf's sustainability roadmap                        | 6  |
| Carbon management across Scope 1, 2, and 3            | 8  |
| Closing the loop on water and waste                   | 10 |
| Certified to deliver sustainable outcomes             | 11 |
| Circular economy and lifecycle thinking               | 12 |
| Government readiness                                  | 13 |
| Shaping the minds of the future                       | 14 |
| Manufacturing for impact: local sites, national scale | 15 |
| Product overview                                      | 16 |
| Systems thinking for sustainable design               | 17 |
| Contact and national support                          | 18 |

This document references both the global Knauf Group (Knauf) and the Australian plasterboard business (Knauf Gypsum Australia). These entities are distinct from Knauf Insulation, which operates separately in Australia.

## FOREWORD

Sustainability is embedded in Knauf Australia's operations, providing a foundation for long-term resilience and relevance. Knauf is a privately owned, family-led company that is committed to deeper investment in solutions that prioritise environmental, social, and economic outcomes. This includes everything from equipment upgrades to zero-waste initiatives in manufacturing.

As a family-owned company, we understand the responsibility of building for generations. Sustainability has never been a trend for us; it's a principle that drives our investments, our operations, and our relationships. We believe in action over aspiration, focusing on measurable, verified reductions while offering opt-in Climate Active certification as part of our carbon-management framework.

Every figure in this brochure is backed by third-party data and environmental product declarations (EPDs), as well as proven through the systems we've built.

This document demonstrates our commitment to the future of sustainable building practices in Australia, providing a transparent summary of Knauf Gypsum's credentials, targets, and achievements to date, all grounded in independently verified data and standards. It outlines how we're supporting customers and communities through measured sustainability outcomes and verified performance to create buildings that are fit for the future.

**George Mamic**  
Managing director  
Knauf Australia



# What sustainability means to Knauf Gypsum in Australia

Sustainability is foundational to Knauf's future-focused approach. It shapes how we operate, invest, and partner with the broader construction industry. Knauf weaves sustainability into every decision, from sourcing raw materials to specifying and certifying systems, across operations, products, and partnerships.

Knauf Gypsum Australia aligns its programs globally with the United Nations (UN) Sustainable Development Goals (SDGs) and locally with Australia's net-zero 2050 ambition. Sustainability is embedded into daily decision-making across engineering, procurement, supply chain, product design, and leadership. This is not just a team initiative; it's a whole-of-business commitment that's reflected in every decision, in every department.

**Knauf's approach to sustainability rests on three interconnected priorities:**

- 1. Environmental stewardship.**
- 2. Social responsibility.**
- 3. Long-term economic performance.**

These priorities guide every decision and investment across Knauf Australia and shape how progress is measured, ensuring that sustainability delivers tangible outcomes across environmental, social, and financial performance.

Knauf invests for both immediate and long-term value by supporting long-term sustainability programs such as solar systems with up to 12-year post-tax returns. This support is essential to reduce our operational emissions. Collaboration across the Asia Pacific (APAC) region drives continuous improvement through shared learning and alignment, strengthening Knauf Australia's ability to meet its sustainability targets and demonstrate verified progress.





# ***Knauf's sustainability roadmap***

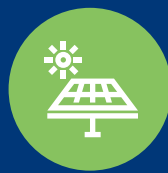
**Knauf Gypsum Australia is actively working towards the ambitious target of net-zero emissions by 2045 without relying on offsets.**

We have set firm interim targets for 2032 and are actively decarbonising operations while scaling output. Our progress is recorded through transparent APAC-wide reporting each quarter. Knauf adopts a three-step approach to achieve its sustainability targets: reduce, switch, and innovate.



## **REDUCE**

**Optimise efficiency through continuous improvement, heat recovery, and material innovation.**



## **SWITCH**

**Transition to renewable energy and alternative fuels such as biogas and biomass.**



## **INNOVATE**

**Advance product circularity, develop digital traceability, and design new systems that support a closed-loop future.**

Knauf Gypsum Australia is proactively working on reducing its energy footprint and increasing its green energy intake. We are working to eliminate landfill waste, reduce water withdrawal, and remove Red List chemicals and building materials from our supply chain alongside emissions targets. Our performance is reported through key national programs, including the National Greenhouse and Energy Reporting (NGER) Scheme, National Pollutants Inventory (NPI), Australian Industrial Chemicals Introduction Scheme (AICIS), and the Energy and Water Survey, strengthening the transparency and accuracy of our data.

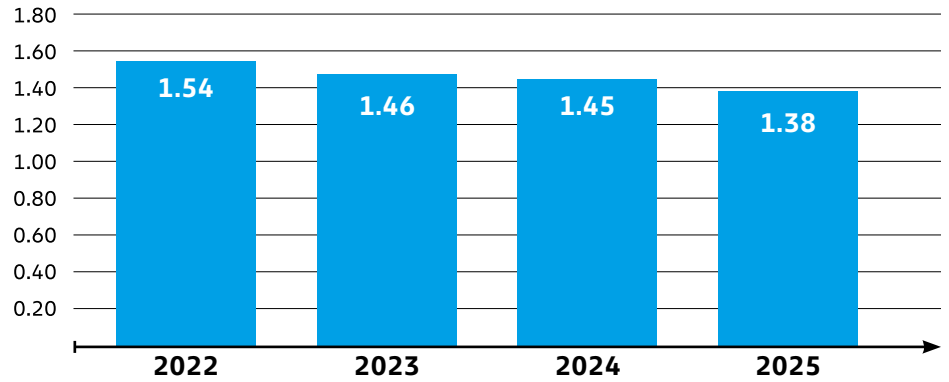
These are not aspirational goals; they are operationalised through factory programs, active workstreams, and supplier frameworks.

The materials Red List is compiled by the International Living Future Institute (ILFI) as part of its Living Building Challenge and encompasses chemicals and materials prevalent in the building industry that are considered harmful to human health and the environment.

# Knauf Gypsum Australia CO<sub>2</sub> Roadmap Progress

## Achievement to date

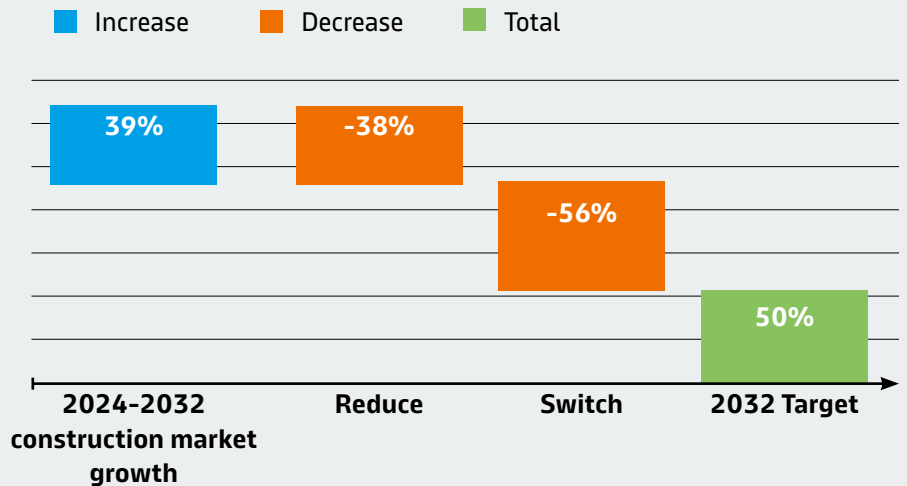
Between 2022 and 2025 Knauf has reduced the unit carbon footprint through multiple improvement projects such as heat exchanger upgrades, chiller replacements and conveyor optimisation.



kg of CO<sub>2</sub> equivalent from all site manufacturing activities per sqm of produced board

## Future targets

Knauf is targeting a net 50% reduction in their CO<sub>2</sub> footprint by 2032 through a range of reduction and switch initiatives. Already underway are solar energy installations, clean energy battery systems and product optimisations to assist with minimising dryer evaporative loads.



| Metric                  | 2032 target            | Key focus areas  |
|-------------------------|------------------------|--|
| Scope 1 and 2 emissions | 50 per cent reduction  | Equipment upgrades, process efficiency, solar energy generation, and renewable sourcing. |
| Scope 3 emissions       | 30 per cent reduction  | Supplier collaboration, transport optimisation, and product design efficiency.           |
| Water withdrawal        | 20 per cent reduction  | Water Stucco Ratio (WSR) improvements, process redesign, and closed-loop recovery.       |
| Landfill waste          | 100 per cent diversion | Site-level recycling, circular material reuse, and supplier engagement.                  |

# Carbon management across Scope 1, 2, and 3

Our emissions strategy addresses the entire value chain with a focus on direct action. Each category of emissions, including Scope 1, 2, and 3, is managed through targeted programs that deliver measurable, verified reductions.

Knauf's approach connects site-level engineering changes with product innovation and supplier collaboration to ensure that sustainability is delivered in practice, not only in reporting.

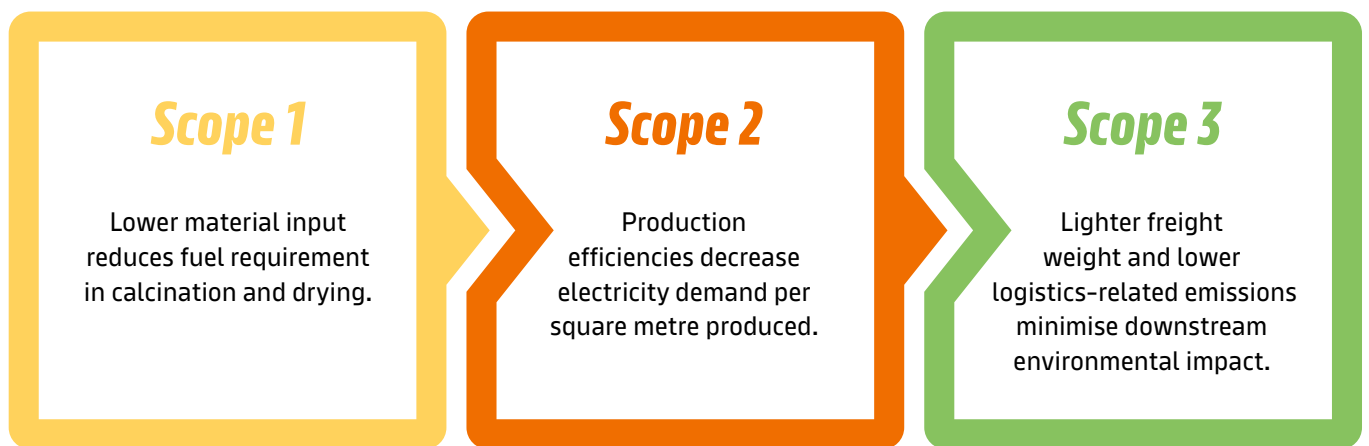
| <i>Emission scope</i> | <i>Key initiatives</i>   | <i>Measurement and verification</i>  |
|-----------------------|--|--|
| <b>Scope 1</b>        | Energy audits, process optimisation, recipe optimisation (such as decreased water/stucco ratio), and equipment upgrades. | Site-level gas monitoring, specific metrics and targets, and APAC benchmarking reports.  |
| <b>Scope 2</b>        | Energy audits, solar generation, and renewable procurement.  | Electricity power metering, specific metrics and targets, and APAC benchmarking reports. |
| <b>Scope 3</b>        | Product design innovation, supplier engagement, and freight optimisation.  |  |



## ***SHEETROCK® One: design-led carbon reduction in practice***

Products like SHEETROCK® One illustrate Knauf Gypsum Australia's design-first approach to sustainability, where carbon management begins at the drawing board. The board's formulation and structure reduce weight without compromising strength, cutting emissions during manufacture and transport while improving handling and installation efficiency on site.

Reducing board weight has a measurable effect across all three scopes of emissions:



*Knauf Gypsum Australia validates these outcomes through EPDs verified under ISO 14025 and EN 15804.*



# Closing the loop on water and waste

Knauf Gypsum Australia's water strategy follows strict European standards, meaning potable water, sea water, and even rainwater is included in our water footprint. Across Australia, our site-level programs are closing the loop on waste with rejected plasterboard reused in agriculture as soil conditioner (e.g., fertiliser) by farmers. We avoid inflated reporting, focusing instead on real circularity outcomes that can be defended, verified, and repeated.

Knauf treats water and waste as interconnected resources rather than by-products. We use rainwater harvesting to supplement potable water, process improvements to reduce withdrawal, and recycling initiatives to minimise the volume of waste reaching landfill. Our closed-loop systems capture, reuse, and redirect resources where possible to add measurable value, whether within our operations or beyond them.

## Manufacturing sites

Production processes optimise water use and reduce waste generation.

## Waste recovery

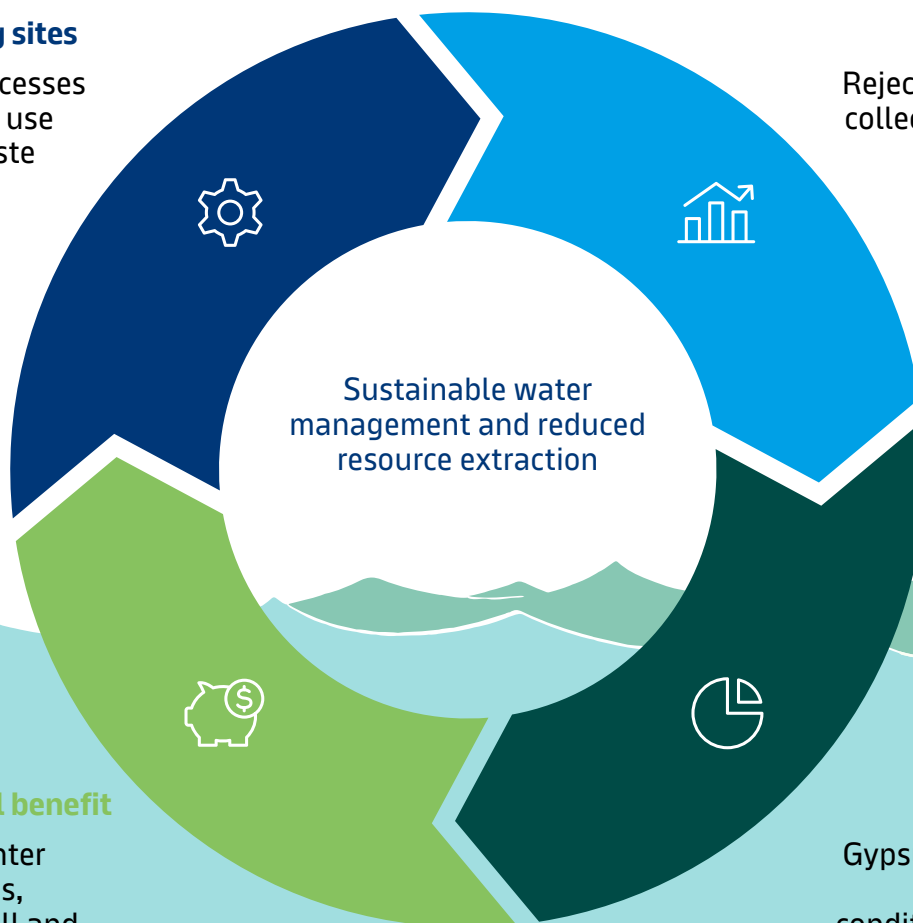
Rejected plasterboard collected and crushed for reuse.

## Environmental benefit

Nutrients re-enter natural systems, reducing landfill and supporting soil health.

## Agricultural use

Gypsum-rich material applied as soil conditioner to improve soil structure.





# Certified to deliver sustainable outcomes

Our Australian-made plasterboard is independently certified by Good Environmental Choice Australia (GECA) and supported with Environmental Product Declarations (EPDs). These are publicly available via EPD Australasia.

Knauf Gypsum Australia offers opt-in products certified by Climate Active and is listed on Product Aware, making products visible and verifiable to specifiers and purchasers.

These third-party certifications give project teams confidence that every environmental claim can be validated, helping customers fast-track compliance without the administrative burden, and making it easier to achieve Green Star, IS rating, and ESG procurement requirements confidently.



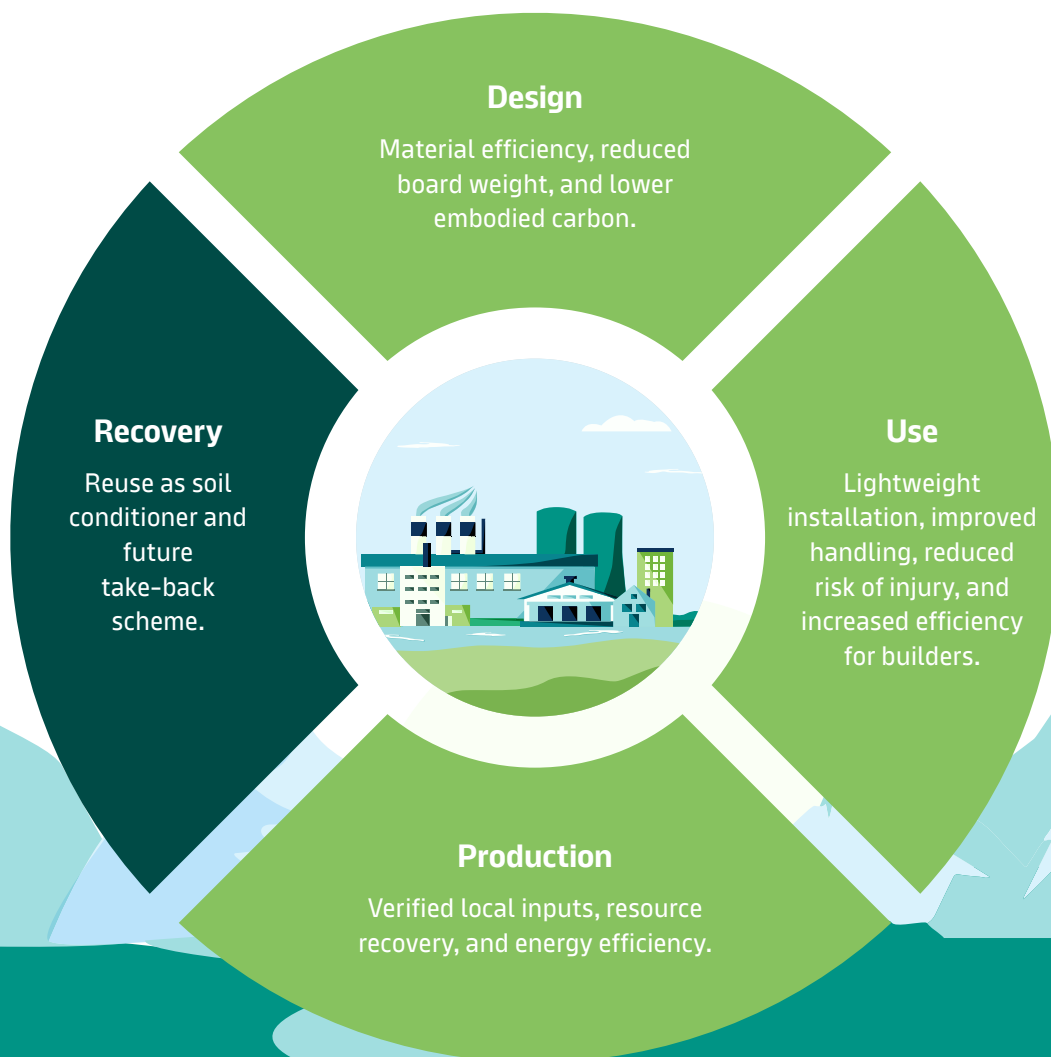
GECA is Australia's leading independent certification for low impact building materials. It verifies that Knauf plasterboard meets strict environmental standards and is recognised by the Green Building Council of Australia, helping projects meet Green Star requirements with confidence.



# Circular economy and lifecycle thinking

Knauf Gypsum is actively reducing product lifecycle impacts by investing in design changes, supply chain circularity, and end-of-life resource recovery. It embeds lifecycle performance at the design phase, rather than retrofitting sustainability into existing products. This includes reducing board weight, maximising material reuse, and simplifying product handling to limit waste and transport requirements, reducing construction project timelines and risk of injuries.

Knauf Gypsum is preparing for increasing expectations around digital product passports, full material traceability, and closed-loop systems. It is participating in conversations with construction-sector peers to advance realistic approaches to lifecycle circularity.



# Government readiness

Knauf wall and lining systems are built to help government and Tier 1 contractors meet the practical requirements of sustainable procurement and construction policy. Australian-made plasterboard, compounds, and ceiling systems are manufactured with certified low-toxicity materials, verified embodied-carbon data, and documented water and waste reduction processes.

This lets project teams demonstrate compliance with national ESG standards and sustainability targets set out in the Net Zero 2050 Strategy, the National Waste Policy Action Plan, and state-level Sustainable Procurement Guidelines.

| <b>Government focus area</b>                 | <b>Knauf Gypsum Australia's alignment and contribution</b>   |
|--|--|
| <b>Net Zero 2050 Strategy*</b>               | Site-level energy efficiency and verified Scope 1 and 2 reduction programs aligned with national net-zero objectives.    |
| <b>Commonwealth Procurement Rules (CPRs)</b> | Local manufacturing and transparent certifications (e.g., GECA, EPD, and Product Aware) supporting sovereign capability. |
| <b>National Waste Policy Action Plan</b>     | Closed-loop plasterboard recovery and reuse in agriculture; on-site segregation and recycling.                           |
| <b>Sustainable Procurement Guidelines</b>    | Lifecycle-based product data supporting evidence-based material selection and emissions reporting.                       |
| <b>Modern Slavery Act 2018</b>               | Supplier engagement and responsible sourcing integrated into procurement operations.                                     |

\* Australian Government Climate Change Commitments, Policies and Programs: <https://www.aofm.gov.au/sites/default/files/2024-02-02/Climate%20change%20slides%20updated%20February%202024.pdf>

**Knauf Gypsum products comply with government ESG expectations and are suited for specification on projects.** Australian manufacturing, climate-certified operations, and transparent documentation mean Knauf's credentials meet the intent of current and emerging ESG policies and procurement rules.

Knauf works closely with government partners, supporting performance-critical projects with traceable, locally compliant solutions. Ongoing collaboration reinforces readiness for future procurement directions, including circular-economy targets and digital material traceability.

- Research into plasterboard recovery and reuse as soil conditioner, directly supporting the Australian Government's waste-diversion goals under the National Waste Policy Action Plan.
- Alignment with circular-economy initiatives focused on resource recovery and lifecycle transparency.
- Preparation for digital-product passport and material-traceability requirements in public procurement.
- Specification across public-sector projects in infrastructure, health, education, and justice sectors.

# *Shaping the minds of the future*

Knauf Gypsum Australia supports sustainability education through architect continuing professional development (CPD) presentations, on-site toolbox talks, and training for commercial and government specifiers. Topics include EPD interpretation, Green Star updates, and system-level sustainability performance. The goal is to equip the industry with confidence, not confusion.

These can be delivered face-to-face or virtually, and often form part of broader partnerships with universities, professional associations, and industry initiatives. Through this investment in education, Knauf is helping shape a generation of professionals who understand how design decisions influence embodied carbon, material health, and whole-of-life performance.

***Custom CPD sessions are available on request and delivered face-to-face or virtually by Knauf's experienced technical and sustainability teams.***



# Manufacturing for impact: local sites, national scale

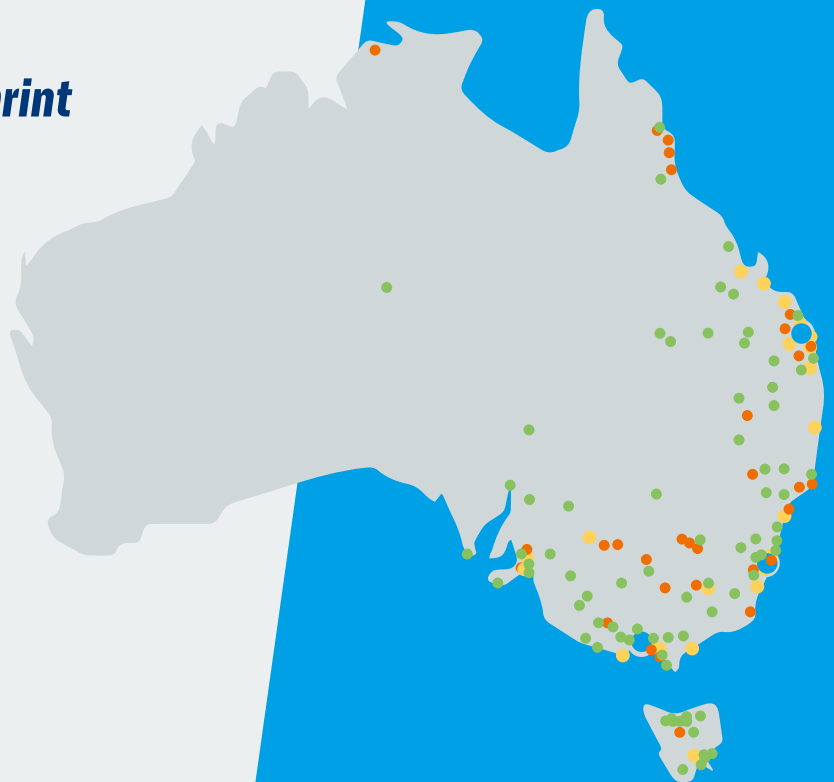
Knauf manufactures its plasterboard in Camellia (NSW), Pinkenba (QLD), and Port Melbourne (VIC), using locally sourced paper produced in Australia and gypsum extracted in Australia.

These facilities are actively decarbonising through energy efficiency, emissions reduction, and waste recovery programs. This network reduces transport emissions, strengthens supply-chain resilience, and supports sovereign capability for large-scale construction and infrastructure projects.

Owning and operating its manufacturing gives Knauf control over materials, processes, quality, and sustainability. This makes it easier to deliver consistent, compliant outcomes for every board across every project.

## *Knauf Gypsum's footprint in Australia*

- 3 Distribution Centres
- 26 Knauf Fulfilment Centres
- 62 Distributors
- Re-Seller Network:  
600+ Hardware Stores



## *Standard plasterboard and performance variants*

Knauf's core product range includes standard and performance plasterboard products, all manufactured in Australia and certified through GECA and supported with EPDs.

These certifications verify that Knauf has used low-toxicity materials, reduced embodied carbon, and provided lifecycle transparency, giving specifiers the confidence to design with verified data rather than assumptions.



## *SHEETROCK® ONE and SHEETROCK® PLUS*

10mm SHEETROCK® ONE is Knauf's lightweight innovation in sustainable construction. It's engineered for strength with up to eight per cent less weight, reducing handling fatigue, transport emissions, and waste. Its lighter design supports faster installation and lower embodied carbon across every project.

Certifications and standards: GECA certified; EPD available; conforms to AS/NZS 2588 Gypsum Plasterboard; covered by Climate Active carbon-management framework.

[Find out more](#)

SHEETROCK® PLUS offers enhanced durability for high-traffic or impact-prone environments, extending product lifespan and reducing maintenance waste. Its denser core improves surface strength without increasing weight, maintaining ease of installation and low embodied carbon.

Certifications and standards: GECA certified; EPD available; compliant with AS/NZS 2588; part of Knauf's circular design roadmap.

[Find out more](#)

# Systems thinking for sustainable design

Sustainability at Knauf is not just product-deep; it's systemwide. Knauf Gypsum's system framework supports customers to specify full wall and ceiling systems that meet fire, acoustic, thermal, and environmental requirements. These systems integrate GECA-certified boards, EPD-backed materials, and compliant partner components.

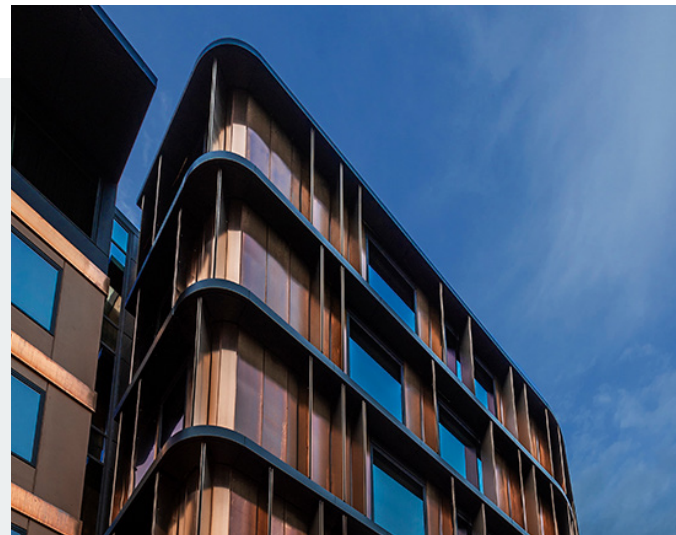
Documentation is available at the system level, not just the product level, simplifying submission processes for projects with complex ESG criteria, and letting architects, contractors, and certifiers validate sustainability outcomes without duplicating assessments.

## CASE STUDIES

### Adelaide Oval

#### Structural and acoustic performance with reduced material use

Knauf's CLT system (with XLAM) design helped achieve acoustic isolation and fire performance for a large-scale timber structure. Integrated wall and ceiling systems reduced material layering and installation time, demonstrating how verified design and low-carbon materials deliver both sustainability and performance outcomes.



### Monash University Pavilion

#### Precision design for lifecycle transparency

Knauf Gypsum's wall and ceiling systems supported the delivery of a low-carbon, high-performance learning environment at Monash University's Business School Pavilion. Integrated system design simplified specification and improved material efficiency, contributing to the project's Green Star certification goals. Verified lifecycle data and GECA-certified materials provided transparency and consistency across design, construction, and reporting stages.

## Contact and national support

Knauf's people make sustainability practical. Our local teams can help with specification, ESG documentation, system compliance, and tailored CPD delivery, giving you the support to deliver sustainability with confidence.

Knauf Gypsum's national network of technical and sustainability specialists' partner with architects, engineers, and contractors from concept through construction. The team provides detailed system data, verified certifications, and design guidance to help meet performance, procurement, and sustainability targets across projects of every scale. Knauf Gypsum in Australia has decades of local manufacturing knowledge and a focus on measurable outcomes, delivering support that translates ambition into action.

Connect with our technical or sustainability specialists to discuss your next project or arrange a CPD-accredited session.

Visit [knauf.com/en-AU/knauf-gypsum/sustainability](https://knauf.com/en-AU/knauf-gypsum/sustainability) to learn more or contact [TecASSIST™](#) for technical information and support.





***Build on us.***

A close-up photograph of a metal tool bit, likely a drill or reamer, positioned vertically on a light-colored, textured workpiece. The tool bit is dark and metallic, with a sharp, conical tip. The workpiece has a fibrous or porous appearance. The background is blurred, showing more of the workpiece and some indistinct shapes. The lighting is dramatic, with strong highlights and deep shadows.

**KNAUF**

**Knauf Gypsum Pty Ltd**

3 Thackeray Street, Camellia NSW 2142

TecASSIST™: 1800 811 222 | [tecassist@knauf.com](mailto:tecassist@knauf.com)

Customer Service: 1800 003 377 | [customerserviceau@knauf.com](mailto:customerserviceau@knauf.com)

[knauf.com/en-AU/knauf-gypsum](https://knauf.com/en-AU/knauf-gypsum)