

KNAUF

SYSTEM UNO 30



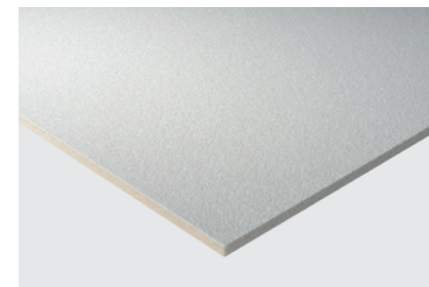
The greatest advantage of the UNO 30 system is the fire protection from above and below. If a fire attacks from above, i.e. from the ceiling cavity, life-saving escape routes remain free of smoke and heat. If the fire attacks from below, the installations in the ceiling cavity are protected. As a design option, there is a choice between METAL or classic MINERAL design.

Build on us.

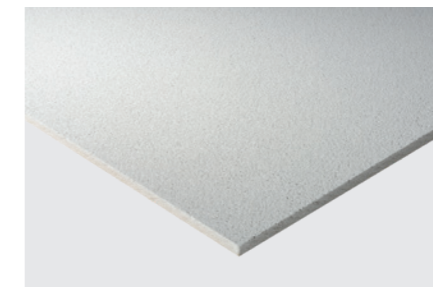
Technical characteristics

Building material class	A2-s1, d0 according to DIN EN 13501-1
Fire resistance class	F30 from above and below according to DIN 4102 Part 2
Sound absorption	up to $\alpha_w = 0.55$ according to DIN EN ISO 11654
Humidity resistance	up to 90% relative humidity (in case of changing humidity up to 30°C)
Thermal conductivity	$\lambda = 0,052-0,057$ W/mK according to DIN 52612
Dimensions	600 x 1400 mm, 300 x 1800 mm, additional sizes on request
Thickness/Weight	40 mm (ca. 12 kg/m ²) / 50 mm (Metal) (ca. 16 kg/m ²)

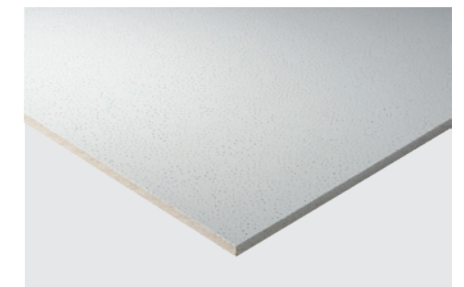
Available standard surfaces



THERMATEX® Feinstratos



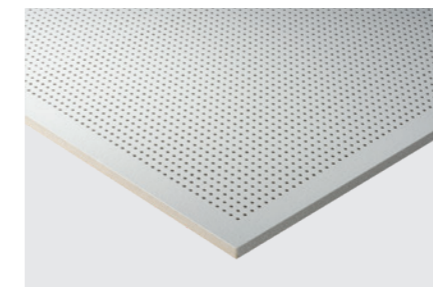
THERMATEX® Feinstratos Micro



THERMATEX® Star



**Metal white similar
RAL 9010 smooth**



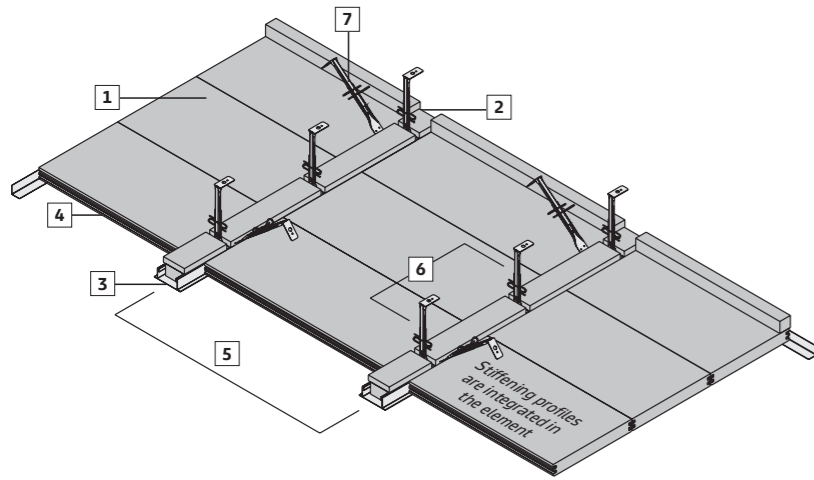
**Metal white similar
RAL 9010 perforated**



**Fleece coating
similar RAL 9010**

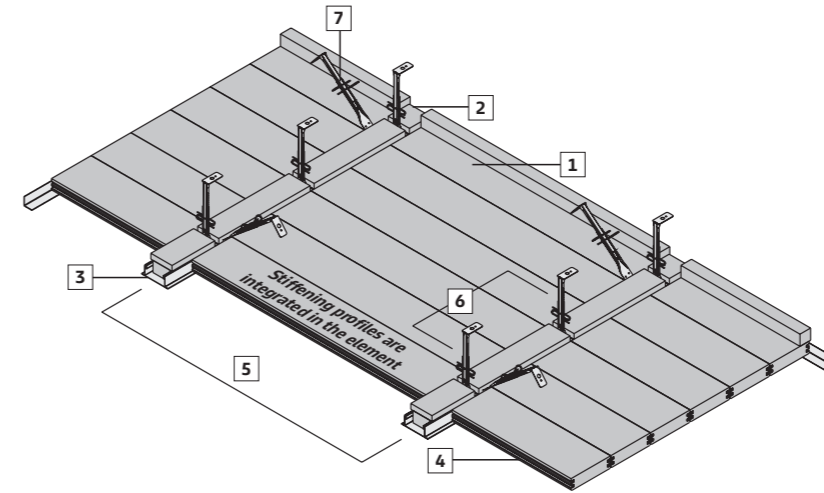
Construction

UNO 30 Element 600 x 1400 mm



- 1 UNO 30 Element 600 x 1400 x 40 mm or 50 mm with METAL COATING
- 2 THERMACOR Board 40 mm
- 3 Bandraster 50 or 100 mm
- 4 Stiffening profile
- 5 Centre distance BR = 1482
- 6 Nonius hangers every 700 mm
- 7 Transverse stiffening every 1250 mm alternating*

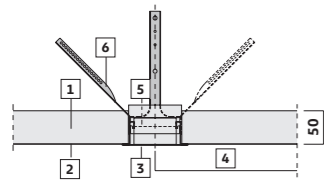
UNO 30 Element 300 x 1800 mm



- 1 UNO 30 Element 600 x 1400 x 40 mm or 50 mm with METAL COATING
 - 2 THERMACOR Board 40 mm
 - 3 Bandraster 50 or 100 mm
 - 4 Stiffening profile
 - 5 Centre distance BR = 1882
 - 6 Nonius hangers every 700 mm
 - 7 Transverse stiffening every 1250 mm alternating*
- *) In addition to the test conditions, we consider the Bandraster transverse stiffening to be necessary for practical execution.

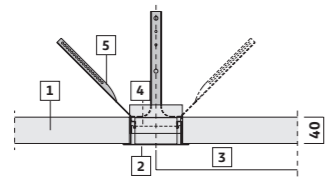
Metal

- 1 UNO 30 Element 600 x 1400 x 50 mm
- 2 METAL COATING
- 3 Bandraster 100 mm
- 4 Centre distance BR = 1482
- 5 THERMACOR Board 40+19 mm
- 6 Transverse stiffening every 1250 mm alternating*



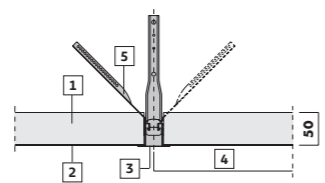
Classic

- 1 UNO 30 Element 600 x 1400 x 40 mm
- 2 Bandraster 100 mm
- 3 Centre distance BR = 1482
- 4 THERMACOR Board 40+19 mm
- 5 Transverse stiffening every 1250 mm alternating*



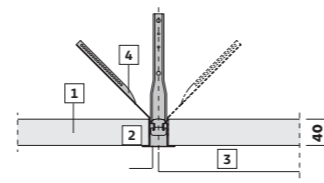
Metal

- 1 UNO 30 Element 600 x 1400 x 50 mm
- 2 METAL COATING
- 3 Bandraster 50 mm, fill with plaster
- 4 Centre distance BR = 1432
- 5 Transverse stiffening every 1250 mm alternating*



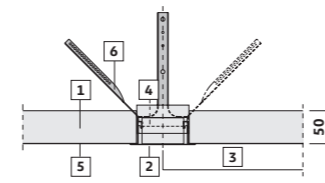
Classic

- 1 UNO 30 Element 600 x 1400 x 40 mm
- 2 Bandraster 50 mm, fill with plaster
- 3 Centre distance BR = 1432
- 4 Transverse stiffening every 1250 mm alternating*



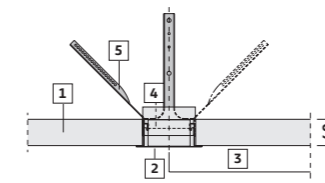
Metal

- 1 UNO 30 Element 300 x 1800 x 50 mm
- 2 Bandraster 100 mm
- 3 Centre distance BR = 1882
- 4 THERMACOR Board 40+19 mm
- 5 METAL COATING
- 6 Transverse stiffening every 1250 mm alternating*



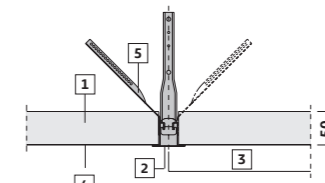
Classic

- 1 UNO 30 Element 300 x 1800 x 40 mm
- 2 Bandraster 100 mm
- 3 Centre distance BR = 1882
- 4 THERMACOR Board 40+19 mm
- 5 Transverse stiffening every 1250 mm alternating*



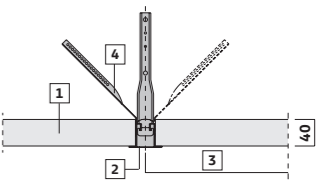
Metal

- 1 UNO 30 Element 300 x 1800 x 50 mm
- 2 Bandraster 50 mm, fill with plaster
- 3 Centre distance BR = 1832
- 4 METAL COATING
- 5 Transverse stiffening every 1250 mm alternating*



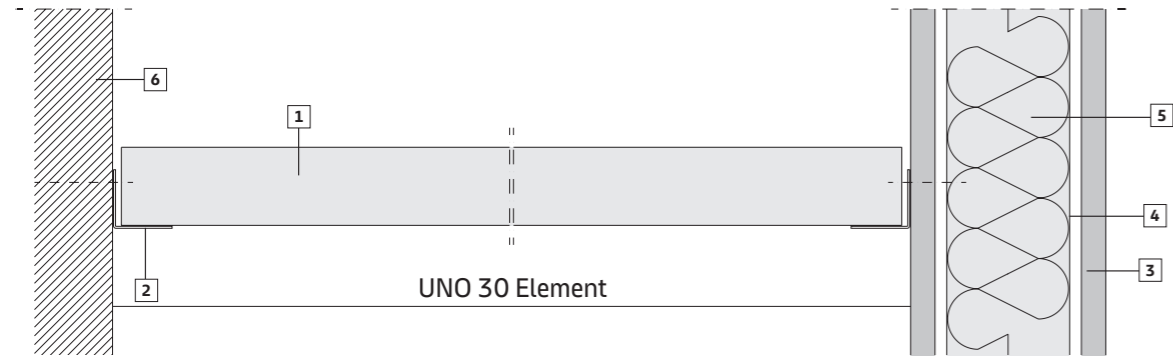
Classic

- 1 UNO 30 Element 300 x 1800 x 40 mm
- 2 Bandraster 50 mm, fill with plaster
- 3 Centre distance BR = 1832
- 4 Transverse stiffening every 1250 mm alternating*



Wall connections

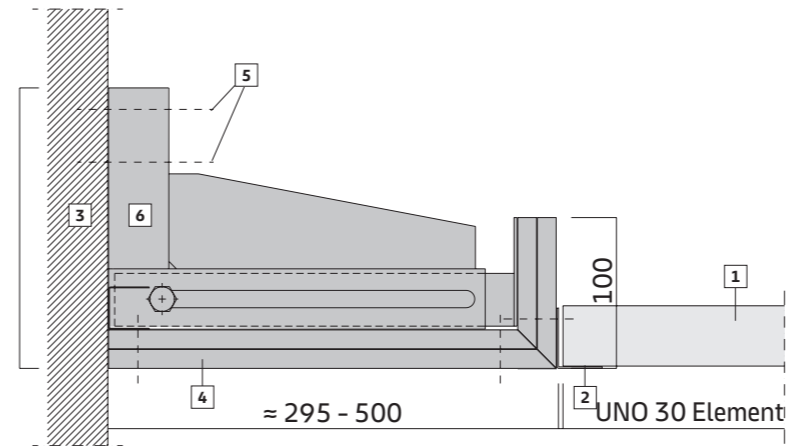
Solid walls and lightweight partition walls



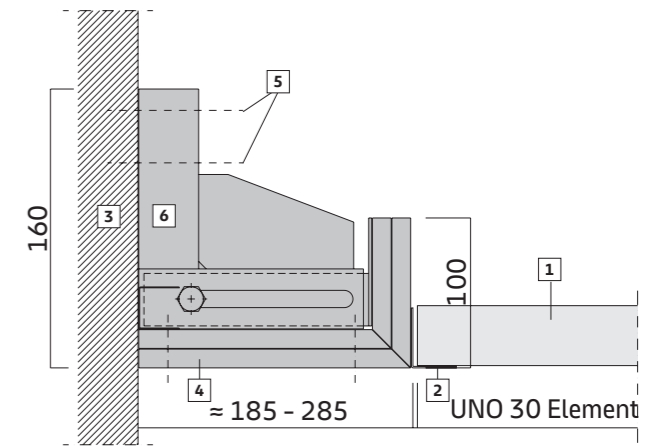
- 1 UNO 30 Element
- 2 Wall angle
- 3 GKF-Board
- 4 CW-Stand
- 5 Mineral wool
- 6 Solid wall

Gypsum bulkhead with wall bracket

Adjustment range up to 500 mm

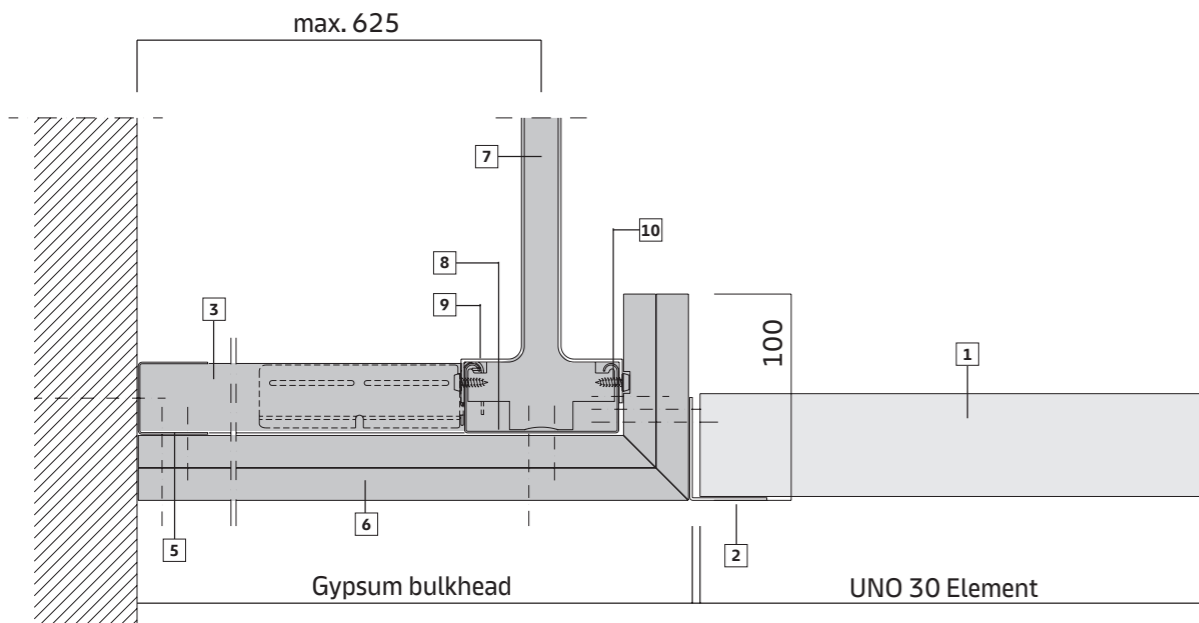


Adjustment range up to 285 mm



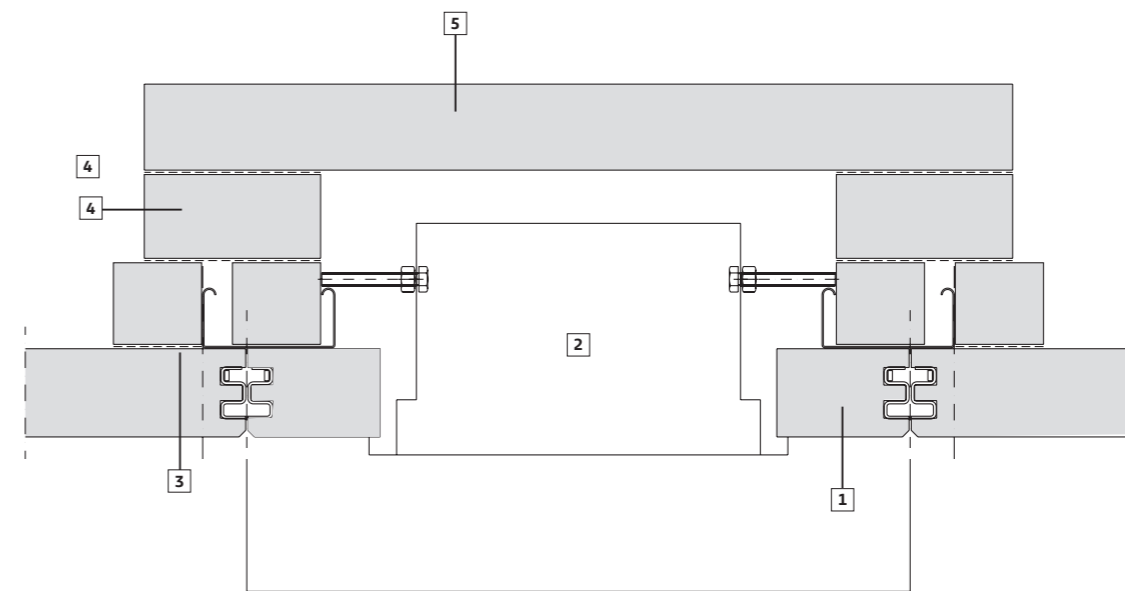
- 1 UNO 30 Element
- 2 Wall angle
- 3 Solid wall or lightweight partition wall (min. F30)
- 4 GKF-Boards 2 x 12.5 mm
- 5 Approved dowels according to static requirements
- 6 Wall bracket

Gypsum bulkhead with nonius hanger



- 1 UNO 30 Element
- 2 Wall angle
- 3 CD-Profile
Distance a=400 mm
- 4 Solid wall or
lightweight partition
wall (min. F30)
- 5 UD-Profile
- 6 GKF-Boards 2 x 12.5 mm
- 7 Nonius hangers
every 680 mm
- 8 CD-Profile
- 9 Universal connector
- 10 Nonius hangers must
be screwed to CD-Profile

Fire protection boxes



Fitted lights with fire protection boxes for mineral and metal

- 1 UNO 30 Element
- 2 Fitted lights
- 3 CD-Profile
- 4 Distance strip 40 mm
- 5 Covering Board 40 mm

Knauf Ceilings Holding GmbH

Landshuter Allee 10
80637 Munich, Germany

Phone: +49 9323 31-0
E-mail: zentrale@knauf.com

Commercial Register: Munich, HRB 306247
VAT No. pursuant to § 27a of the German VAT Act
(Umsatzsteuergesetz): DE317846056
Board of Directors: Lars Klodwig, Karl Wenig, Daniel Wolf

Copyrights cover:
© Baldauf & Baldauf Fotografie



Visit knauf.com

EN - 03/2026