

## Note on English translation / Hinweise zur englischen Fassung

This is a translation of the product data sheet valid in Germany.

All stated details and properties are in compliance with the regulations of the German standards and building regulations. They are only applicable for the specified products, system components, application rules, and construction details in connection with the specifications of the respective certificates and approvals.

Knauf Gips KG denies any liability for applications outside of Germany as this requires changes acc. to the respective national standards and building regulations.

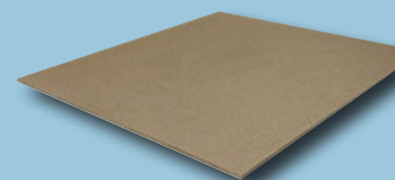


Floor Systems

K439x.de

Product Data Sheet

2023-11



# Fasoperl<sup>®</sup>-A8

Thermally and mechanically stable wood fibre insulation board (WF)

## Product description

Fasoperl<sup>®</sup>-A8 is a premium, thermally and mechanically highly stable 8 mm thick insulation board made of wood fibre.

## Storage

Store flat and level in a dry environment.

## Quality

In compliance with EN 13171, the product is subject to initial type testing and continuous factory production control and bears the CE marking.

## Properties and added value

- Diverse application options
- For application on any bulk leveller
- Suitable for pre-fab, wet and mastic asphalt screeds
- Stable handling enabling one person installation
- Low construction heights possible
- High thermal stability, briefly up to +250 °C
- Can be combined with electrical underfloor heating systems
- Ideal in case of mechanical compaction of bulk levellers due to the high stability

## Field of application

Fasoperl<sup>®</sup>-A8 cover boards are robust and can be laid directly on every bulk levelling layer. The high thermal stability ensures that they can be combined with electrical underfloor heating systems and under mastic asphalt screeds. The low thickness enables the use of Fasoperl<sup>®</sup>-A8 cover boards even for projects with low construction heights.

**Application**

**Application**

**Note** Observe the product data sheet for the respective bulk leveller.

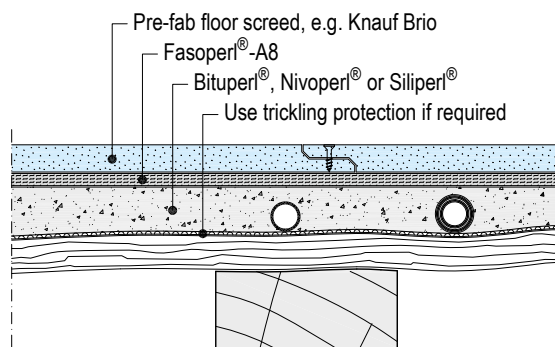
Start at the door following the laying scheme. Cut the last board of each row with a carpet knife as a make-up piece to be used to commence the next row. This ensures joint offset and waste board is avoided. Apply with offset joints in case of multi-layer application.

**Application on bulk levellers**

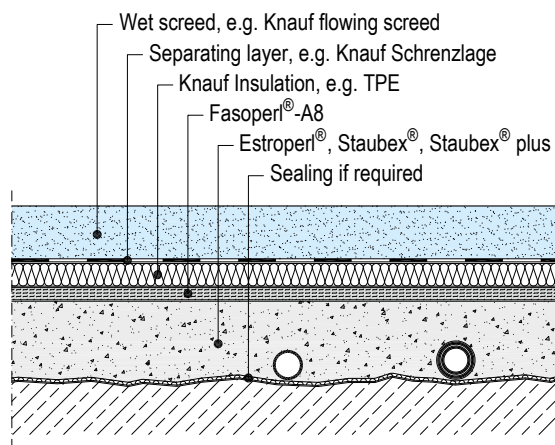
Suitable under pre-fab screed construction on Nivoperl®, Bituperl® or Siliperl® or alternatively under wet and mastic asphalt screed constructions on Estroperl®, Staubex® or Staubex® plus for compaction by walking on the full surface or mechanical compaction (hand stamper or electrical area vibrator).

**Drawings**

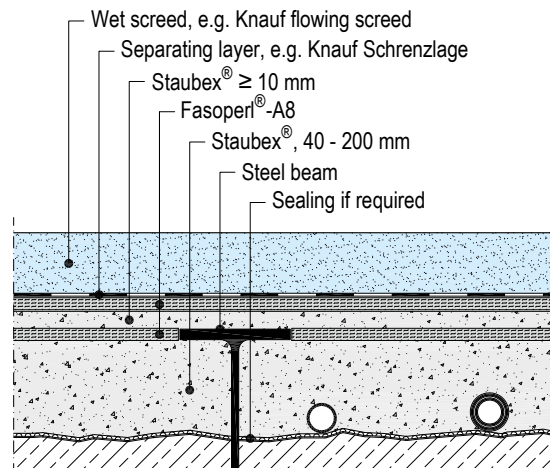
**Substrate equalization on wood joist ceiling**



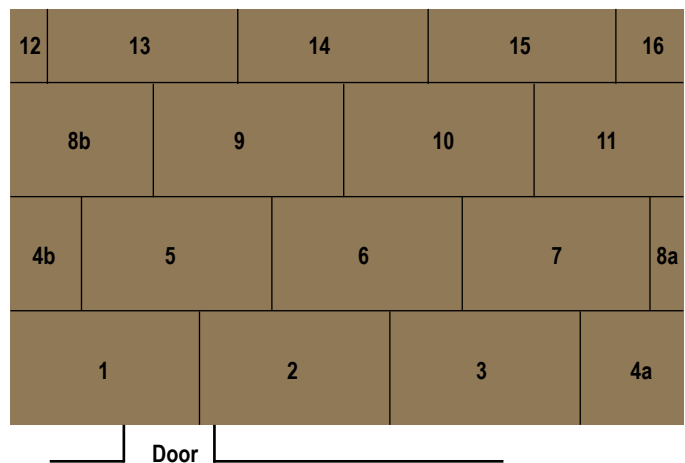
**Substrate equalization in combination with insulation panels**



**Substrate equalization on steel girder ceiling**



**Application scheme**



**Technical data**

Description	Standard	Unit	Fasoperl®-A8
Density	–	kg/m <sup>3</sup>	approx. 260
Weight per unit area	–	kg/m <sup>2</sup>	approx. 2.1
Rated value of thermal conductivity $\lambda_B$	–	W/(m·K)	0.048
Rated value of thermal conductivity $\lambda_D$	–	W/(m·K)	0.046
Thermal resistance $R_D$	–	(m <sup>2</sup> ·K/W)	0.15
Building material class	DIN 4102-1	–	B2
Reaction to fire	DIN EN 13501-1	–	E
Compressive strength (compressive stress with 10 % compression)	–	kPa	≥ 150
Diffusion resistance coefficient $\mu$	–	–	5
Application	DIN 4108-10	–	DEO ds
Application limit temperature	–	°C	Briefly +250

**Product range**

Description	Width	Length	Thickness	Packaging unit	Material number	EAN
Fasoperl®-A8	1000 mm	1200 mm	8 mm	250 boards/pallet	0087193	4003352610015



**Observe safety data sheet!**

For safety data sheets and CE marking see  
[pd.knauf.de](http://pd.knauf.de)



Videos for Knauf systems and products can be found under the following link:

[youtube.com/knauf](https://youtube.com/knauf)



The Knauf Infothek App now provides all the current information and documents from Knauf Gips KG at any time and in every location in a clear and comfortable way.

[knauf.de/infothek](http://knauf.de/infothek)

**Knauf Direct**

Technical Advisory Service:

▶ [knauf-direkt@knauf.com](mailto:knauf-direkt@knauf.com)

▶ [www.knauf.de](http://www.knauf.de)

**Knauf Gips KG** Am Bahnhof 7, 97346 Iphofen, Germany

All technical changes reserved. Only the current printed instructions are valid. The stated information represents current state-of-the-art Knauf technology. The entire state of approved engineering rules, appropriate standards, guidelines, and rules of craftsmanship are not included herewith. These and all application instructions have to be adhered to separately by the installer. Our warranty is expressly limited to our products in flawless condition. All application quantities and delivery amounts are based on empirical data that are not easily transferable to other deviating areas.

All rights reserved. All amendments, reprints and photocopies, including those of excerpts, require our expressed permission.