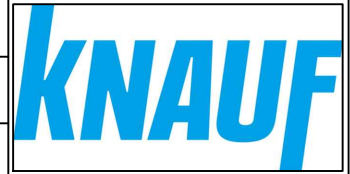


# KNAUF STANDARD DETAILS

DRAWING NO: KSD25-0056



DETAIL TITLE: PERFORMER, MW ACOUSTIC STUD, DOUBLE BOARDED, DEFLECTION HEAD WITH FILLETS AND STANDARD BASE DETAIL, SECTION VIEW

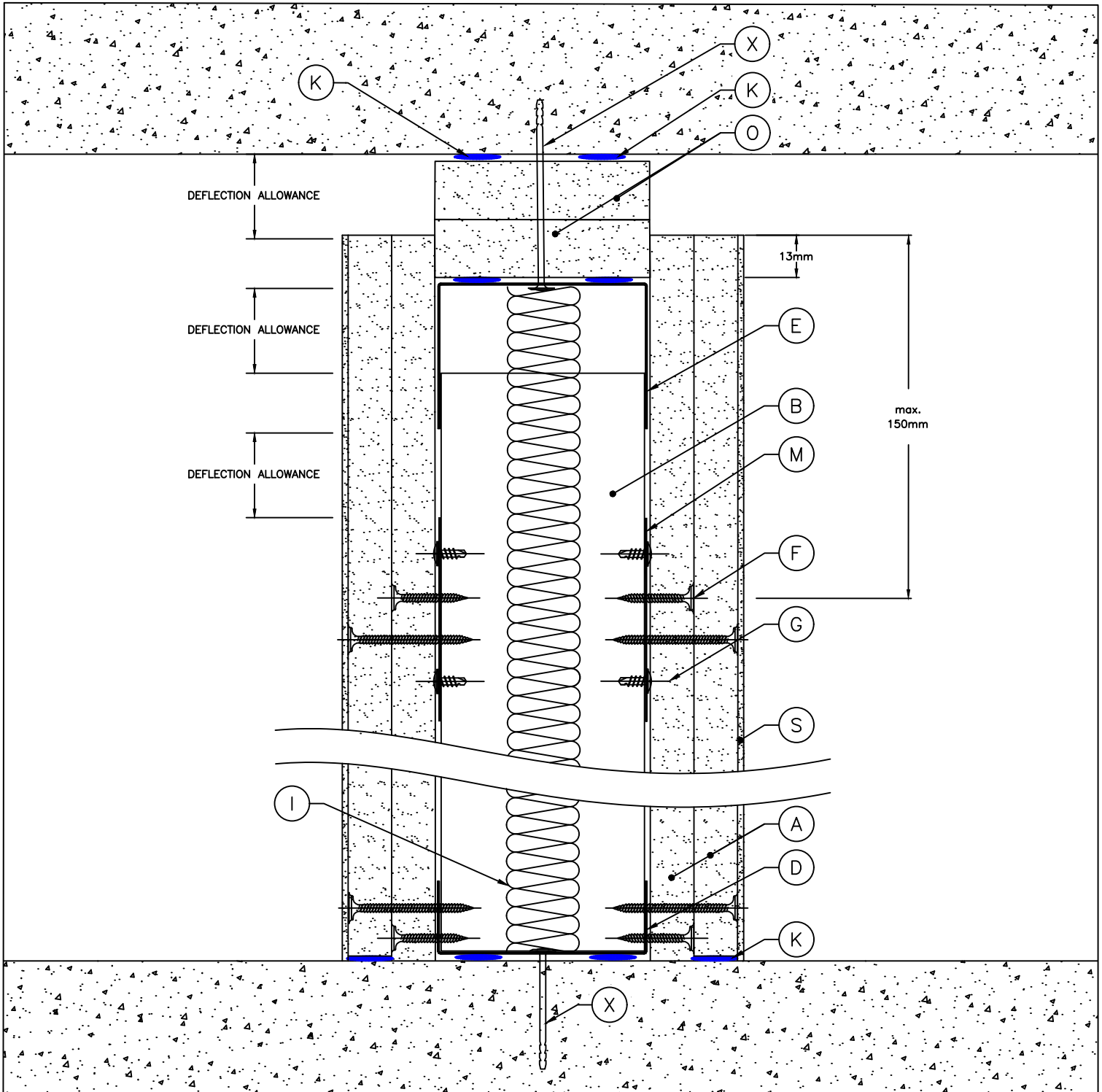
REVISION:

ISSUE DATE: SEPT 2025

SCALE: NTS

DRAWN BY:  
TECHNICAL

APPROVED BY: TMT



A	KNAUF PLASTERBOARD, TO SUIT SPECIFICATION	H	KNAUF COREBOARD	O	2 x 19mm KNAUF COREBOARD FILLETS	U	KNAUF RESILIENT BAR, TO SUIT SPECIFICATION
B	KNAUF MW ACOUSTIC STUD, TO SUIT SPECIFICATION	I	KNAUF INSULATION, TO SUIT SPECIFICATION	P	KNAUF PUTTY PAD	V	KNAUF STAGGERED STUD CLIP, TO SUIT SPECIFICATION
C	KNAUF 'C' STUD, TO SUIT SPECIFICATION	J	2 x 30mm KNAUF FIREBOARD FILLETS	Q	KNAUF 25 x 25mm ANGLE SECTION	W	KNAUF MOVEMENT CONTROL JOINT
D	KNAUF 'U' CHANNEL, TO SUIT SPECIFICATION	K	KNAUF INTUMESCENT AND ACOUSTIC MASTIC	R	KNAUF 25 x 50mm ANGLE SECTION	X	APPROVED FIXING TO MEET SUBSTRATE/LOADING REQUIREMENTS
E	KNAUF 70MM DEEP FLANGE 'U' CHANNEL	L	KNAUF JOINTING RANGE	R2	KNAUF 25 x 75mm ANGLE SECTION	Y	PLYWOOD, TO SUIT SPECIFICATION, BY OTHERS
F	KNAUF SCREW, TO SUIT SPECIFICATION, AT 300mm C/C	M	KNAUF FLAT FIXING PLATE, TO SUIT SPECIFICATION	S	KNAUF FINISHING RANGE	Z	SHAPED TIMBER GROUND, TO SUIT SPECIFICATION, BY OTHERS
G	KNAUF WAFER HEAD SCREW, TO SUIT SPECIFICATION	N	KNAUF COREBOARD CHANNEL	T	KNAUF INSULATION ROCKSILK® RS60	-	-

- STANDARD ARRANGEMENT OF KNAUF COMPONENTS FORMING KNAUF SYSTEM TYPES AND THEIR TYPICAL APPLICATIONS WHICH SHOULD BE USED FOR REFERENCE TO HELP THE DEVELOPMENT OF INSTALLATION AND SITE DETAILING. STANDARD DETAILS ARE SUBMITTED TO SUPPORT THE KNAUF SPECIFICATION AND FORM PART OF TESTED SYSTEMS/AND OR HAVE BEEN REVIEWED BY AN ACCREDITED THIRD PARTY TO DEMONSTRATE SUITABILITY.

NOTE:  
- STANDARD DETAILS DO NOT CONSTITUTE CONSTRUCTION ISSUE DETAILS WHICH REMAIN THE RESPONSIBILITY OF THE PRINCIPAL DESIGNER/CONTRACTOR WHO IS REQUIRED TO TRANSLATE AND SUITABLY INTEGRATE THE STANDARD DETAILS INTO THE OVERARCHING ARCHITECTURAL DESIGN AND/OR INSTALLATION. THE PRINCIPAL DESIGNER/CONTRACTOR IS REQUIRED TO CONSIDER INTERFACES WITH OTHER SYSTEM TYPES, STRUCTURES, OPENINGS, AND JUNCTIONS WHILST ENSURING THE SITE-SPECIFIC PERFORMANCE STRATEGY IS MET. THESE INCLUDE, BUT ARE NOT LIMITED TO, FIRE, ROBUSTNESS, ACOUSTICS, THERMAL, AIRTIGHTNESS AND MOISTURE RESISTANT FOR THE BUILDING.

- FURTHER NOTES:

# KNAUF STANDARD DETAILS

DRAWING NO: KSD25-0057



DETAIL TITLE: PERFORMER, MW ACOUSTIC STUD, DOUBLE BOARDED, DEFLECTION HEAD WITH FILLETS, ANGLES & INSULATION, SECTION VIEW

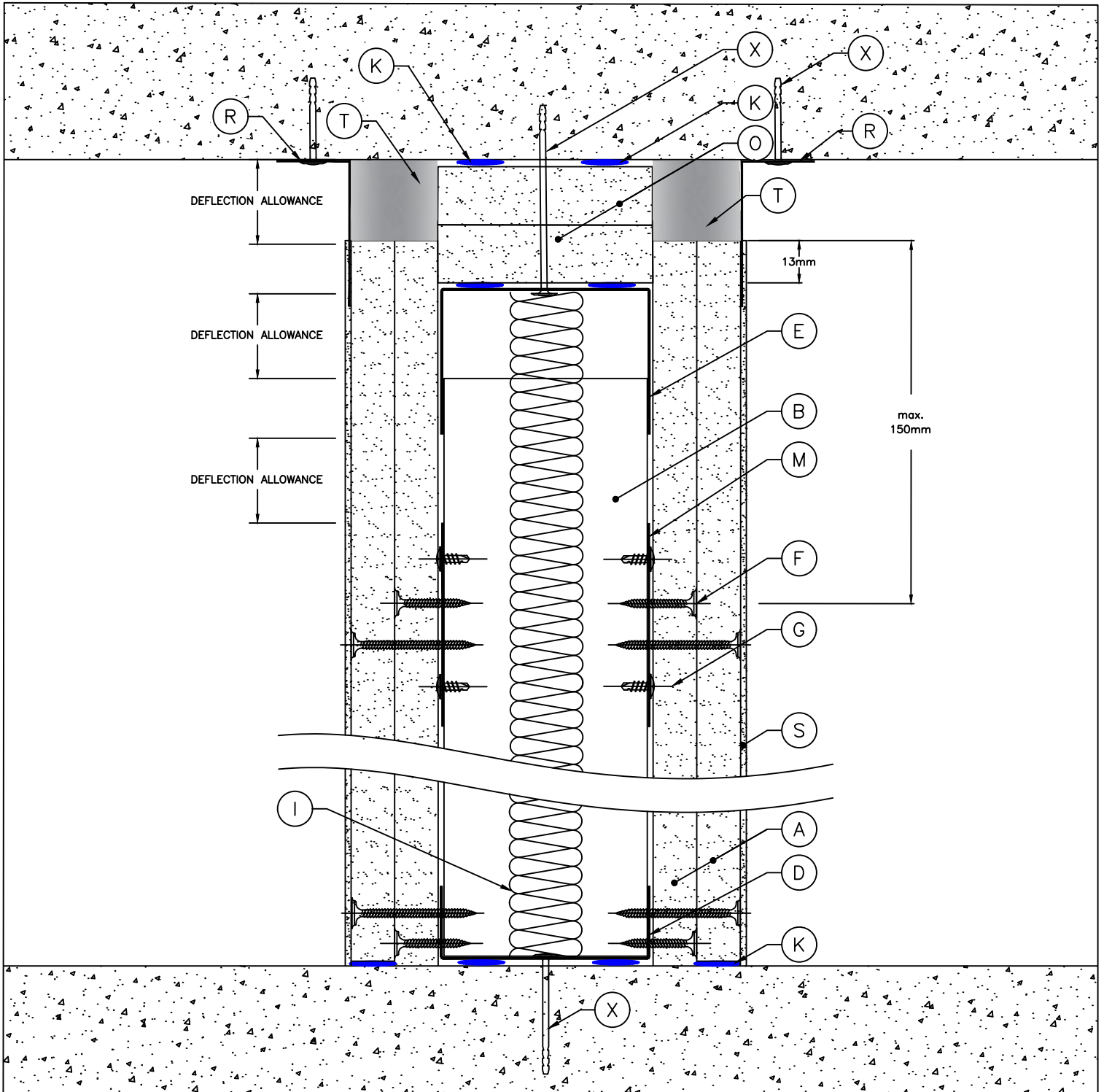
REVISION:

ISSUE DATE: SEPT 2025

SCALE: NTS

DRAWN BY:  
TECHNICAL

APPROVED BY: TMT



A	KNAUF PLASTERBOARD, TO SUIT SPECIFICATION	H	KNAUF COREBOARD	O	2 x 19mm KNAUF COREBOARD FILLETS	U	KNAUF RESILIENT BAR, TO SUIT SPECIFICATION
B	KNAUF MW ACOUSTIC STUD, TO SUIT SPECIFICATION	I	KNAUF INSULATION, TO SUIT SPECIFICATION	P	KNAUF PUTTY PAD	V	KNAUF STAGGERED STUD CLIP, TO SUIT SPECIFICATION
C	KNAUF 'C' STUD, TO SUIT SPECIFICATION	J	2 x 30mm KNAUF FIREBOARD FILLETS	Q	KNAUF 25 x 25mm ANGLE SECTION	W	KNAUF MOVEMENT CONTROL JOINT
D	KNAUF 'U' CHANNEL, TO SUIT SPECIFICATION	K	KNAUF INTUMESCENT AND ACOUSTIC MASTIC	R	KNAUF 25 x 50mm ANGLE SECTION	X	APPROVED FIXING TO MEET SUBSTRATE/LOADING REQUIREMENTS
E	KNAUF 70MM DEEP FLANGE 'U' CHANNEL	L	KNAUF JOINTING RANGE	R2	KNAUF 25 x 75mm ANGLE SECTION	Y	PLYWOOD, TO SUIT SPECIFICATION, BY OTHERS
F	KNAUF SCREW, TO SUIT SPECIFICATION, AT 300mm C/C	M	KNAUF FLAT FIXING PLATE, TO SUIT SPECIFICATION	S	KNAUF FINISHING RANGE	Z	SHAPED TIMBER GROUND, TO SUIT SPECIFICATION, BY OTHERS
G	KNAUF WAFER HEAD SCREW, TO SUIT SPECIFICATION	N	KNAUF COREBOARD CHANNEL	T	KNAUF INSULATION ROCKSILK® RS60	-	-

- STANDARD ARRANGEMENT OF KNAUF COMPONENTS FORMING KNAUF SYSTEM TYPES AND THEIR TYPICAL APPLICATIONS WHICH SHOULD BE USED FOR REFERENCE TO HELP THE DEVELOPMENT OF INSTALLATION AND SITE DETAILING. STANDARD DETAILS ARE SUBMITTED TO SUPPORT THE KNAUF SPECIFICATION AND FORM PART OF TESTED SYSTEMS/AND OR HAVE BEEN REFERRED BY AN ACCREDITED THIRD PARTY TO DEMONSTRATE SUITABILITY.

NOTE:

- STANDARD DETAILS DO NOT CONSTITUTE CONSTRUCTION ISSUE DETAILS WHICH REMAIN THE RESPONSIBILITY OF THE PRINCIPAL DESIGNER/CONTRACTOR WHO IS REQUIRED TO TRANSLATE AND SUITABLY INTEGRATE THE STANDARD DETAILS INTO THE OVERARCHING ARCHITECTURAL DESIGN AND/OR INSTALLATION. THE PRINCIPAL DESIGNER/CONTRACTOR IS REQUIRED TO CONSIDER INTERFACES WITH OTHER SYSTEM TYPES, STRUCTURES, OPENINGS, AND JUNCTIONS WHILST ENSURING THE SITE-SPECIFIC PERFORMANCE STRATEGY IS MET. THESE INCLUDE, BUT ARE NOT LIMITED TO, FIRE, ROBUSTNESS, ACOUSTICS, THERMAL, AIRTIGHTNESS AND MOISTURE RESISTANT FOR THE BUILDING.

- FURTHER NOTES:

# KNAUF STANDARD DETAILS

DRAWING NO: KSD25-0059



DETAIL TITLE: PERFORMER, MW ACOUSTIC STUD, DOUBLE BOARDED, T-JUNCTION BASIC, PLAN VIEW

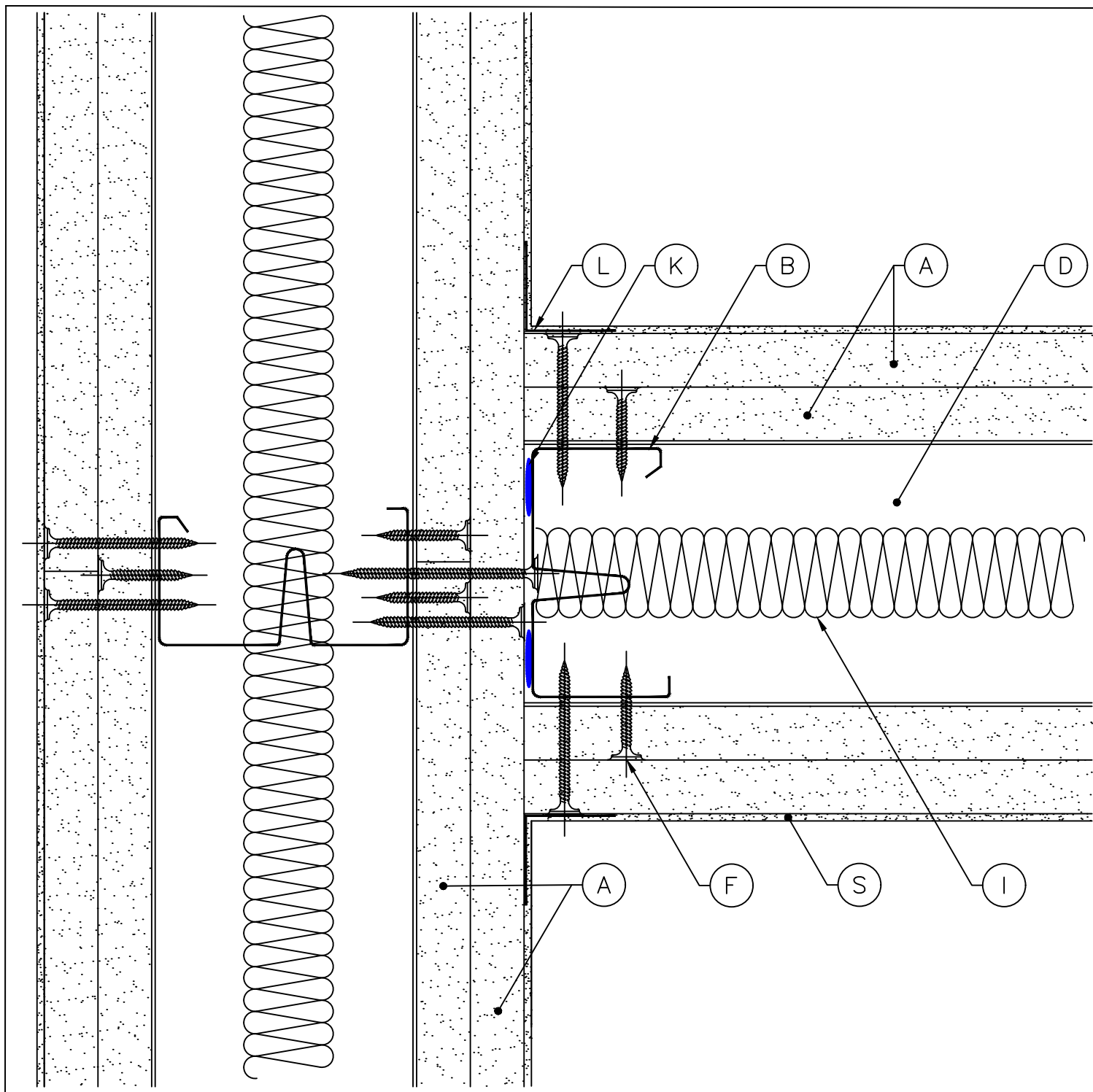
REVISION:

ISSUE DATE: SEPT 2025

SCALE: NTS

DRAWN BY:  
TECHNICAL

APPROVED BY: TMT



A	KNAUF PLASTERBOARD, TO SUIT SPECIFICATION	H	KNAUF COREBOARD	O	2 x 19mm KNAUF COREBOARD FILLETS	U	KNAUF RESILIENT BAR, TO SUIT SPECIFICATION
B	KNAUF MW ACOUSTIC STUD, TO SUIT SPECIFICATION	I	KNAUF INSULATION, TO SUIT SPECIFICATION	P	KNAUF PUTTY PAD	V	KNAUF STAGGERED STUD CLIP, TO SUIT SPECIFICATION
C	KNAUF 'C' STUD, TO SUIT SPECIFICATION	J	2 x 30mm KNAUF FIREBOARD FILLETS	Q	KNAUF 25 x 25mm ANGLE SECTION	W	KNAUF MOVEMENT CONTROL JOINT
D	KNAUF 'U' CHANNEL, TO SUIT SPECIFICATION	K	KNAUF INTUMESCENT AND ACOUSTIC MASTIC	R	KNAUF 25 x 50mm ANGLE SECTION	X	APPROVED FIXING TO MEET SUBSTRATE/LOADING REQUIREMENTS
E	KNAUF 70MM DEEP FLANGE 'U' CHANNEL	L	KNAUF JOINTING RANGE	R2	KNAUF 25 x 75mm ANGLE SECTION	Y	PLYWOOD, TO SUIT SPECIFICATION, BY OTHERS
F	KNAUF SCREW, TO SUIT SPECIFICATION, AT 300mm C/C	M	KNAUF FLAT FIXING PLATE, TO SUIT SPECIFICATION	S	KNAUF FINISHING RANGE	Z	SHAPED TIMBER GROUND, TO SUIT SPECIFICATION, BY OTHERS
G	KNAUF WAFER HEAD SCREW, TO SUIT SPECIFICATION	N	KNAUF COREBOARD CHANNEL	T	KNAUF INSULATION ROCKSILK® RS60	-	-

- STANDARD ARRANGEMENT OF KNAUF COMPONENTS FORMING KNAUF SYSTEM TYPES AND THEIR TYPICAL APPLICATIONS WHICH SHOULD BE USED FOR REFERENCE TO HELP THE DEVELOPMENT OF INSTALLATION AND SITE DETAILING. STANDARD DETAILS ARE SUBMITTED TO SUPPORT THE KNAUF SPECIFICATION AND FORM PART OF TESTED SYSTEMS/AND OR HAVE BEEN REVIEWED BY AN ACCREDITED THIRD PARTY TO DEMONSTRATE SUITABILITY.

NOTE:

- STANDARD DETAILS DO NOT CONSTITUTE CONSTRUCTION ISSUE DETAILS WHICH REMAIN THE RESPONSIBILITY OF THE PRINCIPAL DESIGNER/CONTRACTOR WHO IS REQUIRED TO TRANSLATE AND SUITABLY INTEGRATE THE STANDARD DETAILS INTO THE OVERARCHING ARCHITECTURAL DESIGN AND/OR INSTALLATION. THE PRINCIPAL DESIGNER/CONTRACTOR IS REQUIRED TO CONSIDER INTERFACES WITH OTHER SYSTEM TYPES, STRUCTURES, OPENINGS, AND JUNCTIONS WHILST ENSURING THE SITE-SPECIFIC PERFORMANCE STRATEGY IS MET. THESE INCLUDE, BUT ARE NOT LIMITED TO, FIRE, ROBUSTNESS, ACOUSTICS, THERMAL, AIRTIGHTNESS AND MOISTURE RESISTANT FOR THE BUILDING.

- FURTHER NOTES:

# KNAUF STANDARD DETAILS

DRAWING NO: KSD23-0024



DETAIL TITLE: PERFORMER, MW ACOUSTIC STUD, DOUBLE BOARDED, ACOUSTIC T-JUNCTION, PLAN VIEW

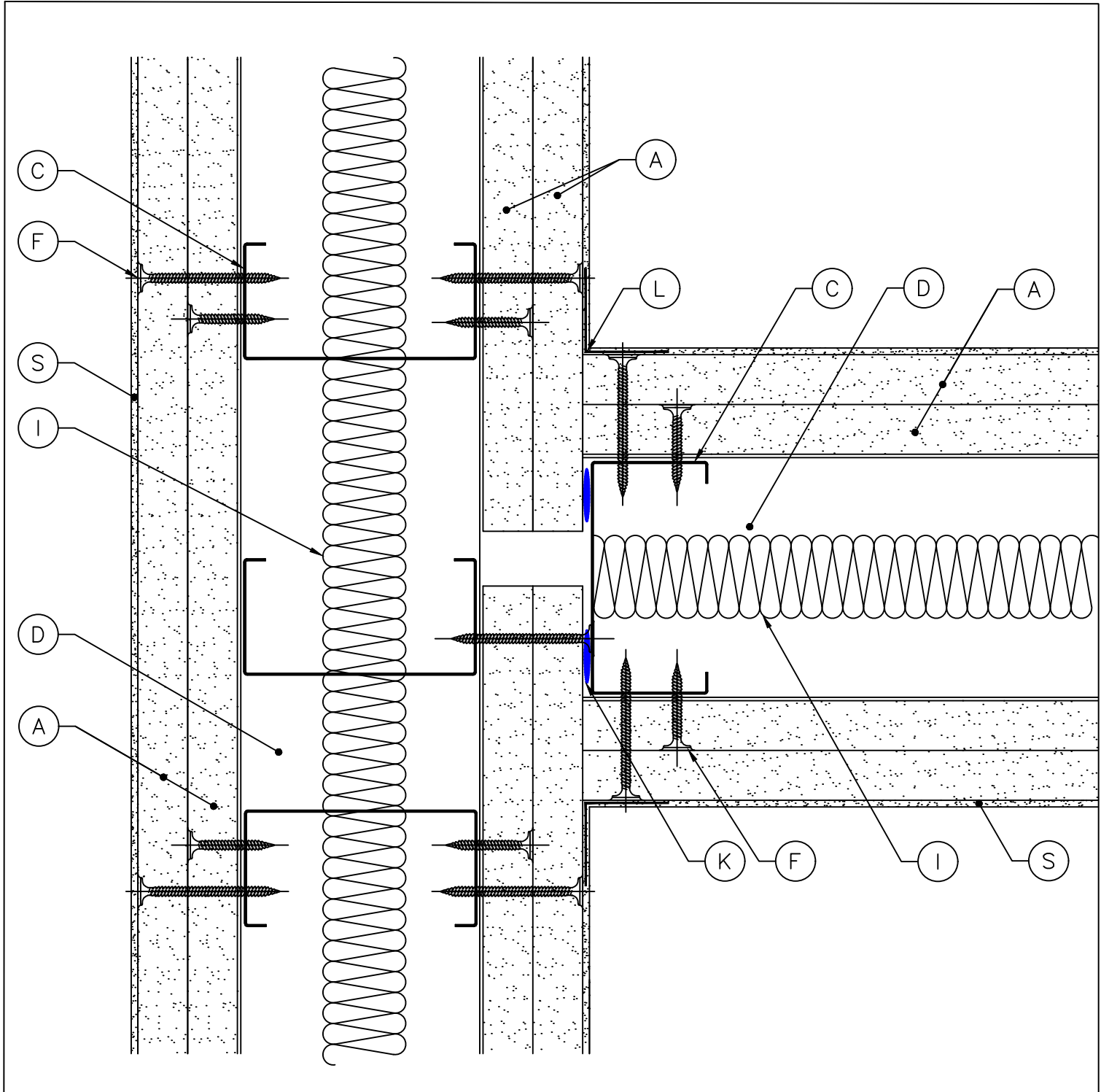
REVISION: C

ISSUE DATE: JULY 2025

SCALE: NTS

DRAWN BY: TECHNICAL

APPROVED BY: TMT



A	KNAUF PLASTERBOARD, TO SUIT SPECIFICATION	H	KNAUF COREBOARD	O	2 x 19mm KNAUF COREBOARD FILLETS	U	KNAUF RESILIENT BAR, TO SUIT SPECIFICATION
B	KNAUF MW ACOUSTIC STUD, TO SUIT SPECIFICATION	I	KNAUF INSULATION, TO SUIT SPECIFICATION	P	KNAUF PUTTY PAD	V	KNAUF STAGGERED STUD CLIP, TO SUIT SPECIFICATION
C	KNAUF 'C' STUD, TO SUIT SPECIFICATION	J	2 x 30mm KNAUF FIREBOARD FILLETS	Q	KNAUF 25 x 25mm ANGLE SECTION	W	KNAUF MOVEMENT CONTROL JOINT
D	KNAUF 'U' CHANNEL, TO SUIT SPECIFICATION	K	KNAUF INTUMESCENT AND ACOUSTIC MASTIC	R	KNAUF 25 x 50mm ANGLE SECTION	X	APPROVED FIXING TO MEET SUBSTRATE/LOADING REQUIREMENTS
E	KNAUF 70MM DEEP FLANGE 'U' CHANNEL	L	KNAUF JOINTING RANGE	R2	KNAUF 25 x 75mm ANGLE SECTION	Y	PLYWOOD, TO SUIT SPECIFICATION, BY OTHERS
F	KNAUF SCREW, TO SUIT SPECIFICATION, AT 300mm C/C	M	KNAUF FLAT FIXING PLATE, TO SUIT SPECIFICATION	S	KNAUF FINISHING RANGE	Z	SHAPED TIMBER GROUND, TO SUIT SPECIFICATION, BY OTHERS
G	KNAUF WAFFER HEAD SCREW, TO SUIT SPECIFICATION	N	KNAUF COREBOARD CHANNEL	T	KNAUF INSULATION ROCKSILK® RS60	-	-

- STANDARD ARRANGEMENT OF KNAUF COMPONENTS FORMING KNAUF SYSTEM TYPES AND THEIR TYPICAL APPLICATIONS WHICH SHOULD BE USED FOR REFERENCE TO HELP THE DEVELOPMENT OF INSTALLATION AND SITE DETAILING. STANDARD DETAILS ARE SUBMITTED TO SUPPORT THE KNAUF SPECIFICATION AND FORM PART OF TESTED SYSTEMS/AND OR HAVE BEEN REVIEWED BY AN ACCREDITED THIRD PARTY TO DEMONSTRATE SUITABILITY.
- NOTE:
- STANDARD DETAILS DO NOT CONSTITUTE CONSTRUCTION ISSUE DETAILS WHICH REMAIN THE RESPONSIBILITY OF THE PRINCIPAL DESIGNER/CONTRACTOR WHO IS REQUIRED TO TRANSLATE AND SUITABLY INTEGRATE THE STANDARD DETAILS INTO THE OVERARCHING ARCHITECTURAL DESIGN AND/OR INSTALLATION. THE PRINCIPAL DESIGNER/CONTRACTOR IS REQUIRED TO CONSIDER INTERFACES WITH OTHER SYSTEM TYPES, STRUCTURES, OPENINGS, AND JUNCTIONS WHILST ENSURING THE SITE-SPECIFIC PERFORMANCE STRATEGY IS MET. THESE INCLUDE, BUT ARE NOT LIMITED TO, FIRE, ROBUSTNESS, ACOUSTICS, THERMAL, AIRTIGHTNESS AND MOISTURE RESISTANT FOR THE BUILDING.
- FURTHER NOTES:

# KNAUF STANDARD DETAILS

DRAWING NO: KSD25-0060



DETAIL TITLE: PERFORMER, MW ACOUSTIC STUD, DOUBLE BOARDED, MOUSE HOLE, SECTION VIEW

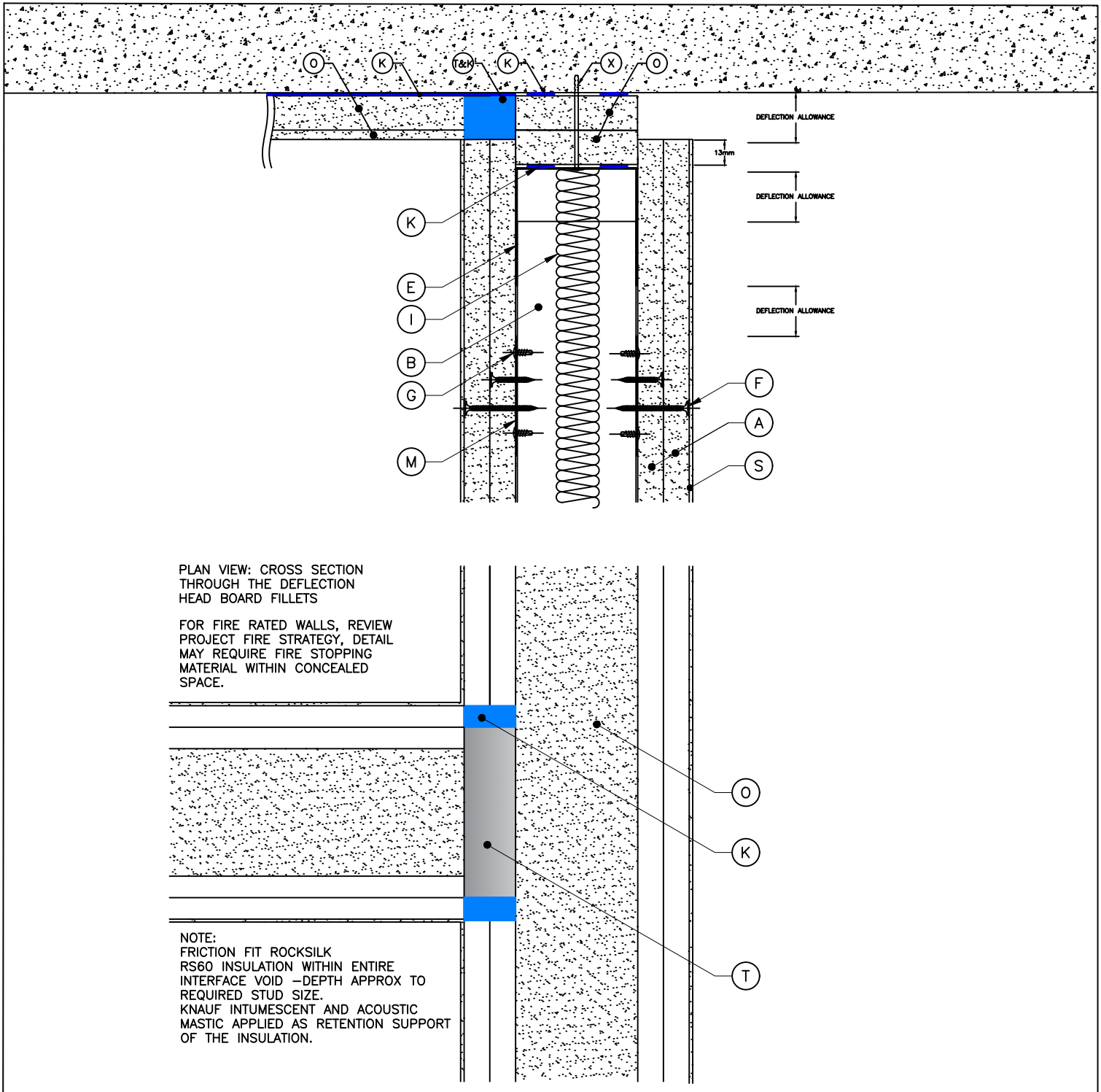
REVISION:

ISSUE DATE: SEPT 2025

SCALE: NTS

DRAWN BY: TECHNICAL

APPROVED BY: TMT



A	KNAUF PLASTERBOARD, TO SUIT SPECIFICATION	H	KNAUF COREBOARD	O	2 x 19mm KNAUF COREBOARD FILLETS	U	KNAUF RESILIENT BAR, TO SUIT SPECIFICATION
B	KNAUF MW ACOUSTIC STUD, TO SUIT SPECIFICATION	I	KNAUF INSULATION, TO SUIT SPECIFICATION	P	KNAUF PUTTY PAD	V	KNAUF STAGGERED STUD CLIP, TO SUIT SPECIFICATION
C	KNAUF 'C' STUD, TO SUIT SPECIFICATION	J	2 x 30mm KNAUF FIREBOARD FILLETS	Q	KNAUF 25 x 25mm ANGLE SECTION	W	KNAUF MOVEMENT CONTROL JOINT
D	KNAUF 'U' CHANNEL, TO SUIT SPECIFICATION	K	KNAUF INTUMESCENT AND ACOUSTIC MASTIC	R	KNAUF 25 x 50mm ANGLE SECTION	X	APPROVED FIXING TO MEET SUBSTRATE/LOADING REQUIREMENTS
E	KNAUF 70MM DEEP FLANGE 'U' CHANNEL	L	KNAUF JOINTING RANGE	R2	KNAUF 25 x 75mm ANGLE SECTION	Y	PLYWOOD, TO SUIT SPECIFICATION, BY OTHERS
F	KNAUF SCREW, TO SUIT SPECIFICATION, AT 300mm C/C	M	KNAUF FLAT FIXING PLATE, TO SUIT SPECIFICATION	S	KNAUF FINISHING RANGE	Z	SHAPED TIMBER GROUND, TO SUIT SPECIFICATION, BY OTHERS
G	KNAUF WAFER HEAD SCREW, TO SUIT SPECIFICATION	N	KNAUF COREBOARD CHANNEL	T	KNAUF INSULATION ROCKSILK® RS60	-	-

- STANDARD ARRANGEMENT OF KNAUF COMPONENTS FORMING KNAUF SYSTEM TYPES AND THEIR TYPICAL APPLICATIONS WHICH SHOULD BE USED FOR REFERENCE TO HELP THE DEVELOPMENT OF INSTALLATION AND SITE DETAILING. STANDARD DETAILS ARE SUBMITTED TO SUPPORT THE KNAUF SPECIFICATION AND FORM PART OF TESTED SYSTEMS/AND OR HAVE BEEN REVIEWED BY AN ACCREDITED THIRD PARTY TO DEMONSTRATE SUITABILITY.
- NOTE:  
STANDARD DETAILS DO NOT CONSTITUTE CONSTRUCTION ISSUE DETAILS WHICH REMAIN THE RESPONSIBILITY OF THE PRINCIPAL DESIGNER/CONTRACTOR WHO IS REQUIRED TO TRANSLATE AND SUITABLY INTEGRATE THE STANDARD DETAILS INTO THE OVERARCHING ARCHITECTURAL DESIGN AND/OR INSTALLATION. THE PRINCIPAL DESIGNER/CONTRACTOR IS REQUIRED TO CONSIDER INTERFACES WITH OTHER SYSTEM TYPES, STRUCTURES, OPENINGS, AND JUNCTIONS WHILST ENSURING THE SITE-SPECIFIC PERFORMANCE STRATEGY IS MET. THESE INCLUDE, BUT ARE NOT LIMITED TO, FIRE, ROBUSTNESS, ACOUSTICS, THERMAL, AIRTIGHTNESS AND MOISTURE RESISTANT FOR THE BUILDING.
- FURTHER NOTES:

# KNAUF STANDARD DETAILS

DRAWING NO: KSD25-0061



DETAIL TITLE: PERFORMER, MW ACOUSTIC STUD, DOUBLE BOARDED, GENERAL PLAN VIEW, SECTION VIEW

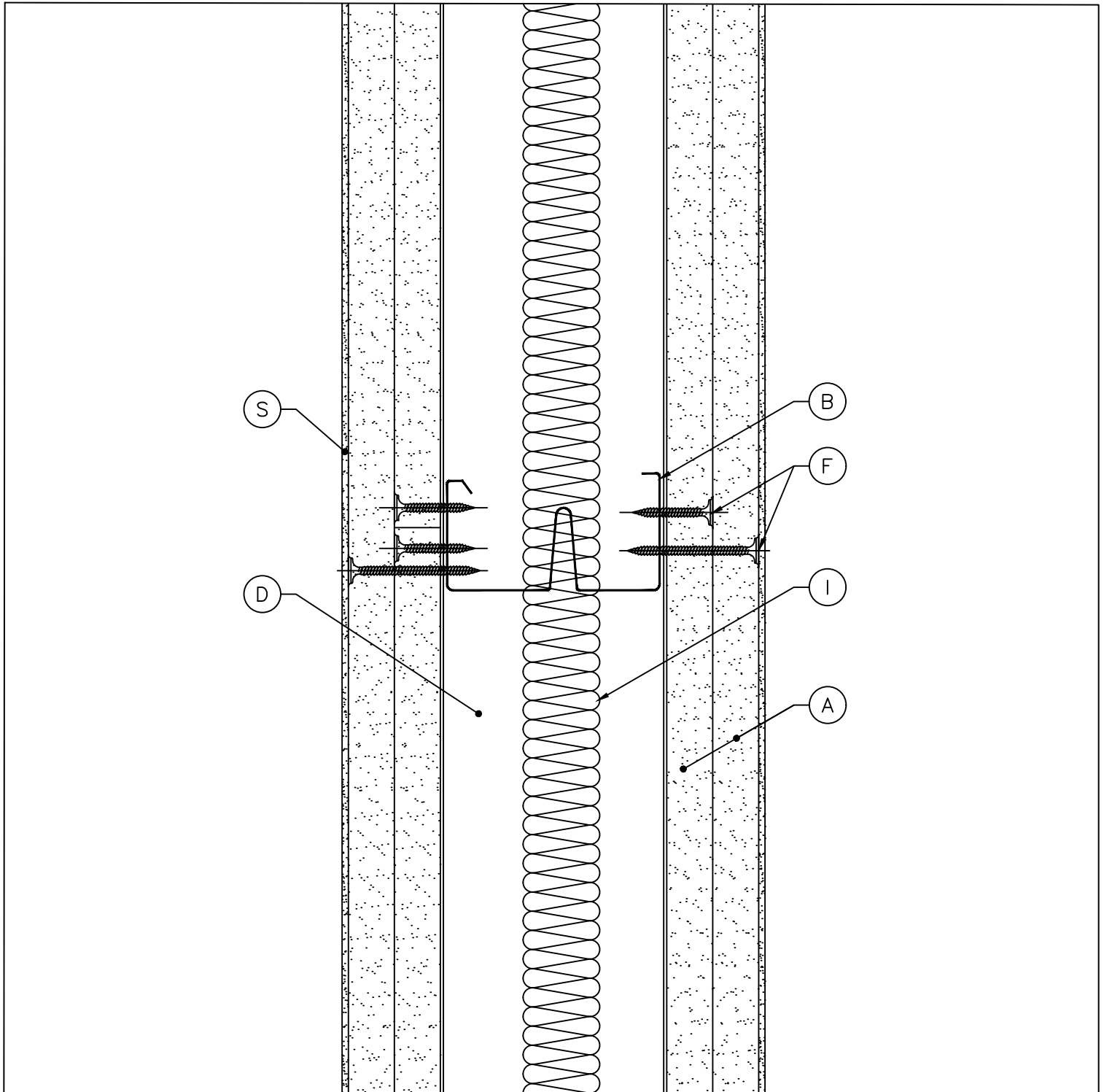
REVISION:

ISSUE DATE: SEPT 2025

SCALE: NTS

DRAWN BY:  
TECHNICAL

APPROVED BY: TMT



A	KNAUF PLASTERBOARD, TO SUIT SPECIFICATION	H	KNAUF COREBOARD	O	2 x 19mm KNAUF COREBOARD FILLETS	U	KNAUF RESILIENT BAR, TO SUIT SPECIFICATION
B	KNAUF MW ACOUSTIC STUD, TO SUIT SPECIFICATION	I	KNAUF INSULATION, TO SUIT SPECIFICATION	P	KNAUF PUTTY PAD	V	KNAUF STAGGERED STUD CLIP, TO SUIT SPECIFICATION
C	KNAUF 'C' STUD, TO SUIT SPECIFICATION	J	2 x 30mm KNAUF FIREBOARD FILLETS	Q	KNAUF 25 x 25mm ANGLE SECTION	W	KNAUF MOVEMENT CONTROL JOINT
D	KNAUF 'U' CHANNEL, TO SUIT SPECIFICATION	K	KNAUF INTUMESCENT AND ACOUSTIC MASTIC	R	KNAUF 25 x 50mm ANGLE SECTION	X	APPROVED FIXING TO MEET SUBSTRATE/LOADING REQUIREMENTS
E	KNAUF 70MM DEEP FLANGE 'U' CHANNEL	L	KNAUF JOINTING RANGE	R2	KNAUF 25 x 75mm ANGLE SECTION	Y	PLYWOOD, TO SUIT SPECIFICATION, BY OTHERS
F	KNAUF SCREW, TO SUIT SPECIFICATION, AT 300mm C/C	M	KNAUF FLAT FIXING PLATE, TO SUIT SPECIFICATION	S	KNAUF FINISHING RANGE	Z	SHAPED TIMBER GROUND, TO SUIT SPECIFICATION, BY OTHERS
G	KNAUF WAFER HEAD SCREW, TO SUIT SPECIFICATION	N	KNAUF COREBOARD CHANNEL	T	KNAUF INSULATION ROCKSILK® RS60	-	-

- STANDARD ARRANGEMENT OF KNAUF COMPONENTS FORMING KNAUF SYSTEM TYPES AND THEIR TYPICAL APPLICATIONS WHICH SHOULD BE USED FOR REFERENCE TO HELP THE DEVELOPMENT OF INSTALLATION AND SITE DETAILING. STANDARD DETAILS ARE SUBMITTED TO SUPPORT THE KNAUF SPECIFICATION AND FORM PART OF TESTED SYSTEMS/AND OR HAVE BEEN REVIEWED BY AN ACCREDITED THIRD PARTY TO DEMONSTRATE SUITABILITY.
- **NOTE:**
- STANDARD DETAILS DO NOT CONSTITUTE CONSTRUCTION ISSUE DETAILS WHICH REMAIN THE RESPONSIBILITY OF THE PRINCIPAL DESIGNER/CONTRACTOR WHO IS REQUIRED TO TRANSLATE AND SUITABLY INTEGRATE THE STANDARD DETAILS INTO THE OVERARCHING ARCHITECTURAL DESIGN AND/OR INSTALLATION. THE PRINCIPAL DESIGNER/CONTRACTOR IS REQUIRED TO CONSIDER INTERFACES WITH OTHER SYSTEM TYPES, STRUCTURES, OPENINGS, AND JUNCTIONS WHILST ENSURING THE SITE-SPECIFIC PERFORMANCE STRATEGY IS MET. THESE INCLUDE, BUT ARE NOT LIMITED TO, FIRE, ROBUSTNESS, ACOUSTICS, THERMAL, AIRTIGHTNESS AND MOISTURE RESISTANT FOR THE BUILDING.
- **FURTHER NOTES:**

# KNAUF STANDARD DETAILS

DRAWING NO: KSD25-0062



DETAIL TITLE: PERFORMER, DOUBLE BOARDED, ABUTMENT TO CONCRETE, PLAN VIEW

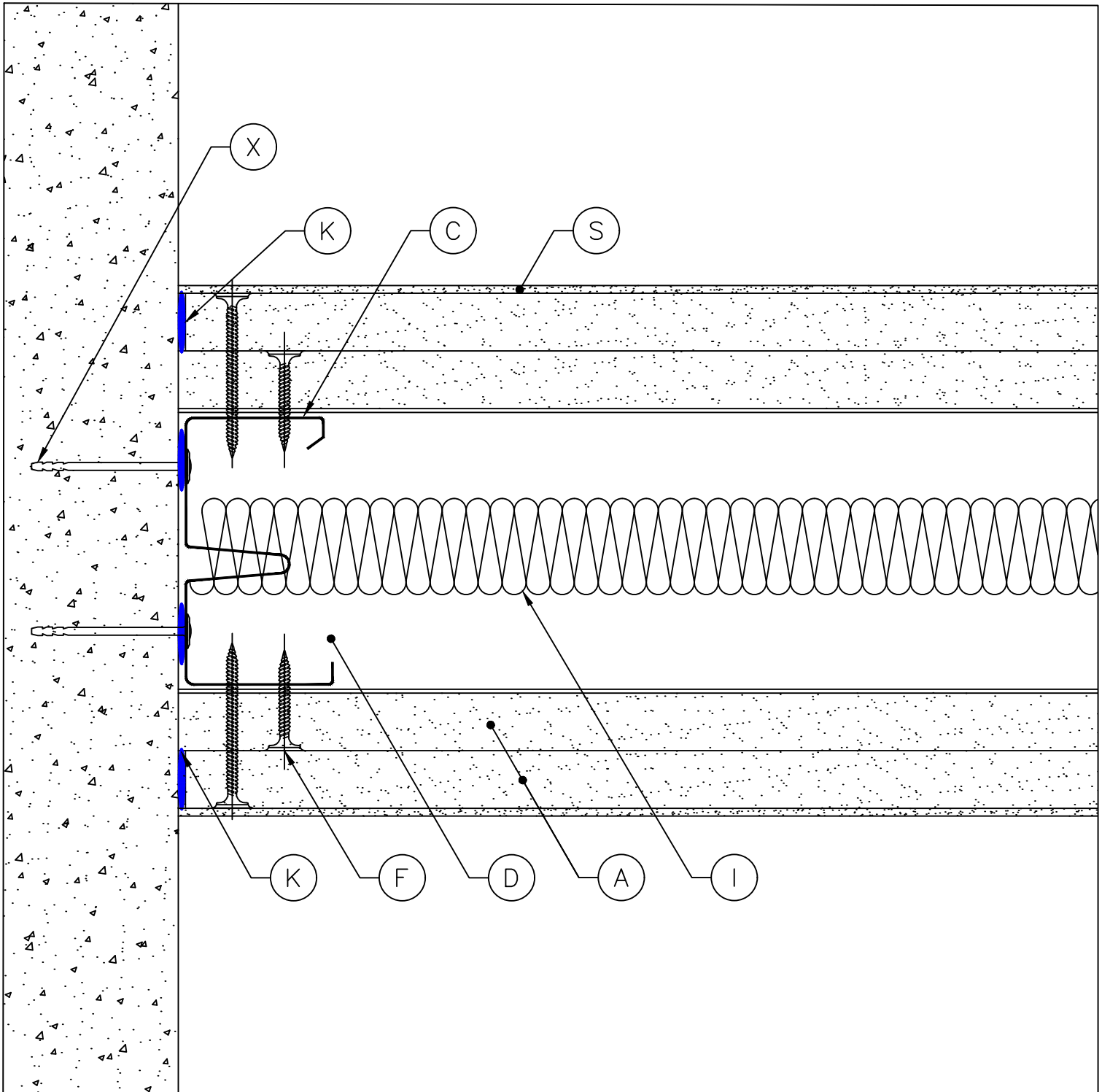
REVISION:

ISSUE DATE: SEPT 2025

SCALE: NTS

DRAWN BY:  
TECHNICAL

APPROVED BY: TMT



A	KNAUF PLASTERBOARD, TO SUIT SPECIFICATION	H	KNAUF COREBOARD	O	2 x 19mm KNAUF COREBOARD FILLETS	U	KNAUF RESILIENT BAR, TO SUIT SPECIFICATION
B	KNAUF MW ACOUSTIC STUD, TO SUIT SPECIFICATION	I	KNAUF INSULATION, TO SUIT SPECIFICATION	P	KNAUF PUTTY PAD	V	KNAUF STAGGERED STUD CLIP, TO SUIT SPECIFICATION
C	KNAUF 'C' STUD, TO SUIT SPECIFICATION	J	2 x 30mm KNAUF FIREBOARD FILLETS	Q	KNAUF 25 x 25mm ANGLE SECTION	W	KNAUF MOVEMENT CONTROL JOINT
D	KNAUF 'U' CHANNEL, TO SUIT SPECIFICATION	K	KNAUF INTUMESCENT AND ACOUSTIC MASTIC	R	KNAUF 25 x 50mm ANGLE SECTION	X	APPROVED FIXING TO MEET SUBSTRATE/LOADING REQUIREMENTS
E	KNAUF 70MM DEEP FLANGE 'U' CHANNEL	L	KNAUF JOINTING RANGE	R2	KNAUF 25 x 75mm ANGLE SECTION	Y	PLYWOOD, TO SUIT SPECIFICATION, BY OTHERS
F	KNAUF SCREW, TO SUIT SPECIFICATION, AT 300mm C/C	M	KNAUF FLAT FIXING PLATE, TO SUIT SPECIFICATION	S	KNAUF FINISHING RANGE	Z	SHAPED TIMBER GROUND, TO SUIT SPECIFICATION, BY OTHERS
G	KNAUF WAFER HEAD SCREW, TO SUIT SPECIFICATION	N	KNAUF COREBOARD CHANNEL	T	KNAUF INSULATION ROCKSILK® RS60	-	-

- STANDARD ARRANGEMENT OF KNAUF COMPONENTS FORMING KNAUF SYSTEM TYPES AND THEIR TYPICAL APPLICATIONS WHICH SHOULD BE USED FOR REFERENCE TO HELP THE DEVELOPMENT OF INSTALLATION AND SITE DETAILING. STANDARD DETAILS ARE SUBMITTED TO SUPPORT THE KNAUF SPECIFICATION AND FORM PART OF TESTED SYSTEMS/AND OR HAVE BEEN REVIEWED BY AN ACCREDITED THIRD PARTY TO DEMONSTRATE SUITABILITY.
- **NOTE:** STANDARD DETAILS DO NOT CONSTITUTE CONSTRUCTION ISSUE DETAILS WHICH REMAIN THE RESPONSIBILITY OF THE PRINCIPAL DESIGNER/CONTRACTOR WHO IS REQUIRED TO TRANSLATE AND SUITABLY INTEGRATE THE STANDARD DETAILS INTO THE OVERARCHING ARCHITECTURAL DESIGN AND/OR INSTALLATION. THE PRINCIPAL DESIGNER/CONTRACTOR IS REQUIRED TO CONSIDER INTERFACES WITH OTHER SYSTEM TYPES, STRUCTURES, OPENINGS, AND JUNCTIONS WHILST ENSURING THE SITE-SPECIFIC PERFORMANCE STRATEGY IS MET. THESE INCLUDE, BUT ARE NOT LIMITED TO, FIRE, ROBUSTNESS, ACOUSTICS, THERMAL, AIRTIGHTNESS AND MOISTURE RESISTANT FOR THE BUILDING.
- **FURTHER NOTES:**

# KNAUF STANDARD DETAILS

DRAWING NO: KSD25-0063



DETAIL TITLE: PERFORMER, MW ACOUSTIC STUD, DOUBLE BOARDED, 90 DEGREE CORNER, PLAN VIEW

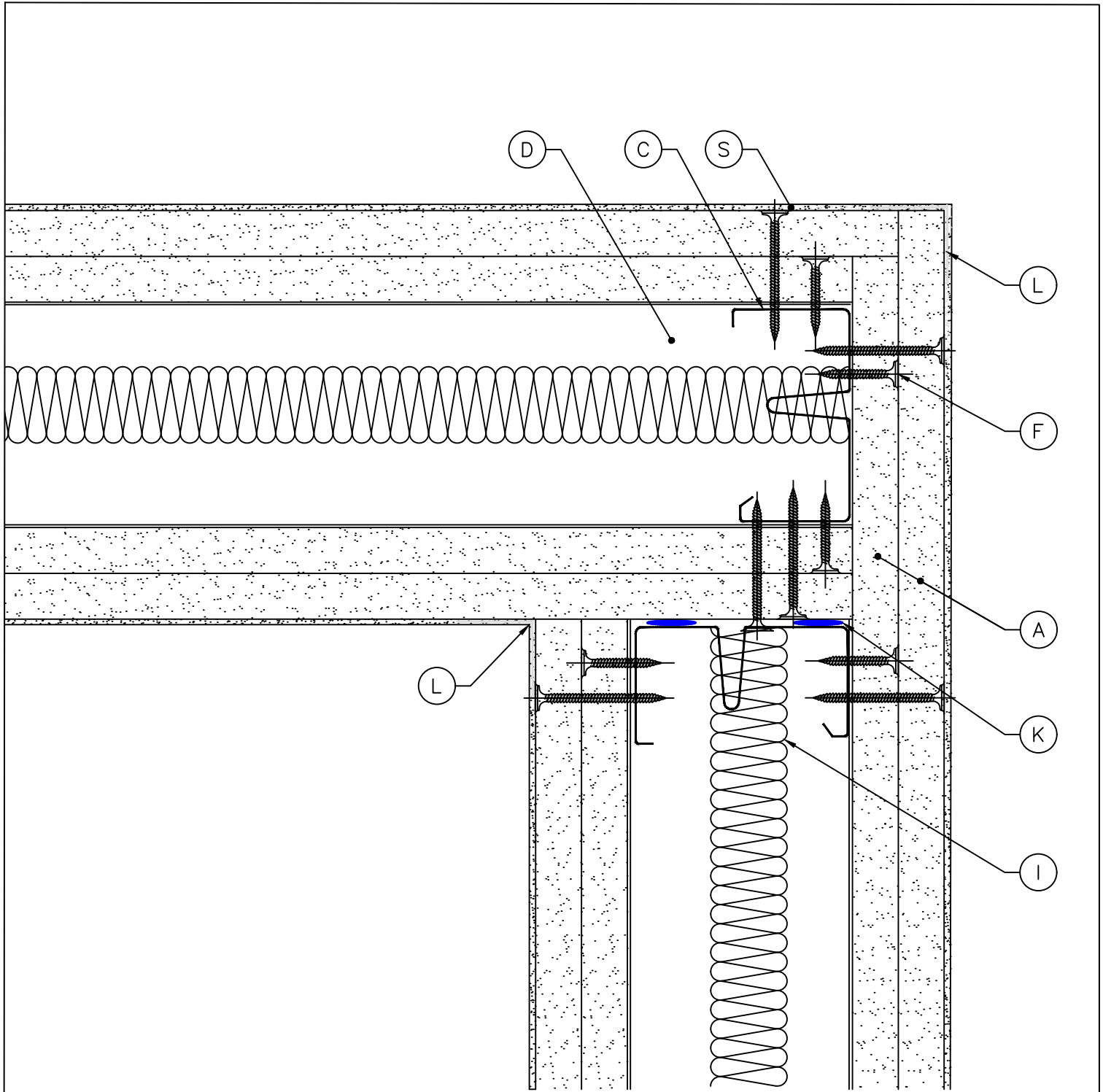
REVISION:

ISSUE DATE: SEPT 2025

SCALE: NTS

DRAWN BY:  
TECHNICAL

APPROVED BY: TMT



A	KNAUF PLASTERBOARD, TO SUIT SPECIFICATION	H	KNAUF COREBOARD	O	2 x 19mm KNAUF COREBOARD FILLETS	U	KNAUF RESILIENT BAR, TO SUIT SPECIFICATION
B	KNAUF MW ACOUSTIC STUD, TO SUIT SPECIFICATION	I	KNAUF INSULATION, TO SUIT SPECIFICATION	P	KNAUF PUTTY PAD	V	KNAUF STAGGERED STUD CLIP, TO SUIT SPECIFICATION
C	KNAUF 'C' STUD, TO SUIT SPECIFICATION	J	2 x 30mm KNAUF FIREBOARD FILLETS	Q	KNAUF 25 x 25mm ANGLE SECTION	W	KNAUF MOVEMENT CONTROL JOINT
D	KNAUF 'U' CHANNEL, TO SUIT SPECIFICATION	K	KNAUF INTUMESCENT AND ACOUSTIC MASTIC	R	KNAUF 25 x 50mm ANGLE SECTION	X	APPROVED FIXING TO MEET SUBSTRATE/LOADING REQUIREMENTS
E	KNAUF 70MM DEEP FLANGE 'U' CHANNEL	L	KNAUF JOINTING RANGE	R2	KNAUF 25 x 75mm ANGLE SECTION	Y	PLYWOOD, TO SUIT SPECIFICATION, BY OTHERS
F	KNAUF SCREW, TO SUIT SPECIFICATION, AT 300mm C/C	M	KNAUF FLAT FIXING PLATE, TO SUIT SPECIFICATION	S	KNAUF FINISHING RANGE	Z	SHAPED TIMBER GROUND, TO SUIT SPECIFICATION, BY OTHERS
G	KNAUF WAFER HEAD SCREW, TO SUIT SPECIFICATION	N	KNAUF COREBOARD CHANNEL	T	KNAUF INSULATION ROCKSILK® RS60	-	-

STANDARD ARRANGEMENT OF KNAUF COMPONENTS FORMING KNAUF SYSTEM TYPES AND THEIR TYPICAL APPLICATIONS WHICH SHOULD BE USED FOR REFERENCE TO HELP THE DEVELOPMENT OF INSTALLATION AND SITE DETAILING. STANDARD DETAILS ARE SUBMITTED TO SUPPORT THE KNAUF SPECIFICATION AND FORM PART OF TESTED SYSTEMS/AND OR HAVE BEEN REVIEWED BY AN ACCREDITED THIRD PARTY TO DEMONSTRATE SUITABILITY.

**NOTE:**

- STANDARD DETAILS DO NOT CONSTITUTE CONSTRUCTION ISSUE DETAILS WHICH REMAIN THE RESPONSIBILITY OF THE PRINCIPAL DESIGNER/CONTRACTOR WHO IS REQUIRED TO TRANSLATE AND SUITABLY INTEGRATE THE STANDARD DETAILS INTO THE OVERARCHING ARCHITECTURAL DESIGN AND/OR INSTALLATION. THE PRINCIPAL DESIGNER/CONTRACTOR IS REQUIRED TO CONSIDER INTERFACES WITH OTHER SYSTEM TYPES, STRUCTURES, OPENINGS, AND JUNCTIONS WHILST ENSURING THE SITE-SPECIFIC PERFORMANCE STRATEGY IS MET. THESE INCLUDE, BUT ARE NOT LIMITED TO, FIRE, ROBUSTNESS, ACOUSTICS, THERMAL, AIRTIGHTNESS AND MOISTURE RESISTANT FOR THE BUILDING.
- FURTHER NOTES:

# KNAUF STANDARD DETAILS

DRAWING NO: KSD25-0065



**DETAIL TITLE:** PERFORMER, MW ACOUSTIC STUD, DOUBLE BOARDED, SPLAY CORNER WITH TIMBER, PLAN VIEW

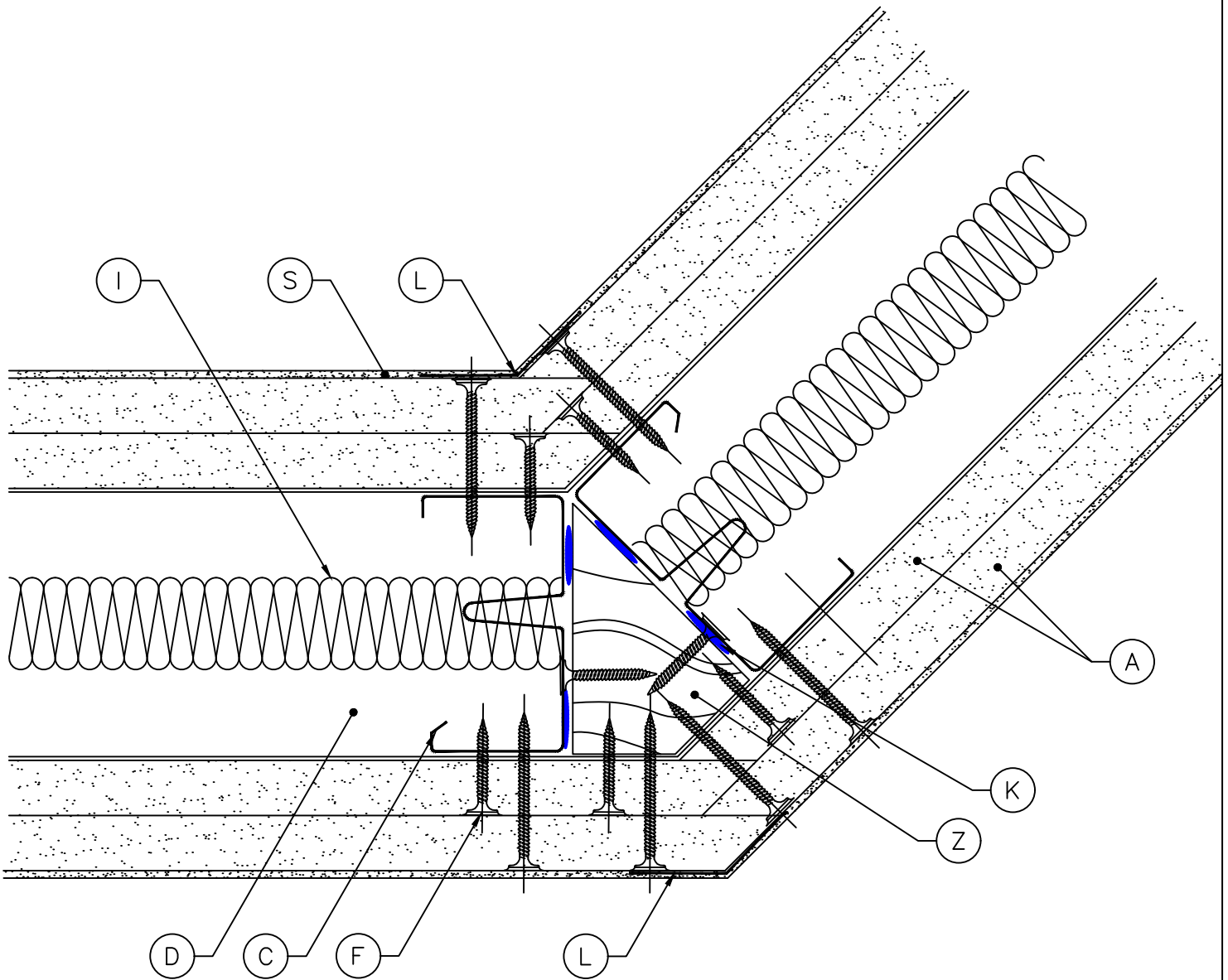
**REVISION:**

**ISSUE DATE:** SEPT 2025

**SCALE:** NTS

**DRAWN BY:** TECHNICAL

**APPROVED BY:** TMT



**NOTE:**

- THERE IS NO SPECIFIC REQUIREMENT FOR TIMBER FILLET ON ACUTE ANGLES

A	KNAUF PLASTERBOARD, TO SUIT SPECIFICATION	H	KNAUF COREBOARD	O	2 x 19mm KNAUF COREBOARD FILLETS	U	KNAUF RESILIENT BAR, TO SUIT SPECIFICATION
B	KNAUF MW ACOUSTIC STUD, TO SUIT SPECIFICATION	I	KNAUF INSULATION, TO SUIT SPECIFICATION	P	KNAUF PUTTY PAD	V	KNAUF STAGGERED STUD CLIP, TO SUIT SPECIFICATION
C	KNAUF 'C' STUD, TO SUIT SPECIFICATION	J	2 x 30mm KNAUF FIREBOARD FILLETS	Q	KNAUF 25 x 25mm ANGLE SECTION	W	KNAUF MOVEMENT CONTROL JOINT
D	KNAUF 'U' CHANNEL, TO SUIT SPECIFICATION	K	KNAUF INTUMESCENT AND ACOUSTIC MASTIC	R	KNAUF 25 x 50mm ANGLE SECTION	X	APPROVED FIXING TO MEET SUBSTRATE/LOADING REQUIREMENTS
E	KNAUF 70MM DEEP FLANGE 'U' CHANNEL	L	KNAUF JOINTING RANGE	R2	KNAUF 25 x 75mm ANGLE SECTION	Y	PLYWOOD, TO SUIT SPECIFICATION, BY OTHERS
F	KNAUF SCREW, TO SUIT SPECIFICATION, AT 300mm C/C	M	KNAUF FLAT FIXING PLATE, TO SUIT SPECIFICATION	S	KNAUF FINISHING RANGE	Z	SHAPED TIMBER GROUND, TO SUIT SPECIFICATION, BY OTHERS
G	KNAUF WAFER HEAD SCREW, TO SUIT SPECIFICATION	N	KNAUF COREBOARD CHANNEL	T	KNAUF INSULATION ROCKSILK® RS60	-	-

- STANDARD ARRANGEMENT OF KNAUF COMPONENTS FORMING KNAUF SYSTEM TYPES AND THEIR TYPICAL APPLICATIONS WHICH SHOULD BE USED FOR REFERENCE TO HELP THE DEVELOPMENT OF INSTALLATION AND SITE DETAILING. STANDARD DETAILS ARE SUBMITTED TO SUPPORT THE KNAUF SPECIFICATION AND FORM PART OF TESTED SYSTEMS/AND OR HAVE BEEN REVIEWED BY AN ACCREDITED THIRD PARTY TO DEMONSTRATE SUITABILITY.
- **NOTE:**
- STANDARD DETAILS DO NOT CONSTITUTE CONSTRUCTION ISSUE DETAILS WHICH REMAIN THE RESPONSIBILITY OF THE PRINCIPAL DESIGNER/CONTRACTOR WHO IS REQUIRED TO TRANSLATE AND SUITABLY INTEGRATE THE STANDARD DETAILS INTO THE OVERARCHING ARCHITECTURAL DESIGN AND/OR INSTALLATION. THE PRINCIPAL DESIGNER/CONTRACTOR IS REQUIRED TO CONSIDER INTERFACES WITH OTHER SYSTEM TYPES, STRUCTURES, OPENINGS, AND JUNCTIONS WHILST ENSURING THE SITE-SPECIFIC PERFORMANCE STRATEGY IS MET. THESE INCLUDE, BUT ARE NOT LIMITED TO, FIRE, ROBUSTNESS, ACOUSTICS, THERMAL, AIRTIGHTNESS AND MOISTURE RESISTANT FOR THE BUILDING.
- **FURTHER NOTES:**