



KNAUF

Knauf Philippines

Product Catalogue

Plasterboards & Access Panels
Jointing & Finishing Solutions
Acoustic and Antimicrobial Ceiling Solutions
Cement Boards for Facade

Plasterboards & Access Panels

STANDARDSHIELD

Knauf StandardShield is suitable for a wide range of [standard wall and ceiling applications](#). It has a smooth paper finish that is ready to receive paint or other direct decoration. It is also noncombustible and prevents fire propagation.

Knauf StandardShield is manufactured in accordance with ASTM C1396.

- > [Lightweight wall and ceiling lining](#)
- > [Maintains good indoor air quality](#)

Size: 1220 mm x 2440 mm
Thickness: 9 mm, 12 mm, 16 mm
Edge: Tapered



FIRESHIELD

Knauf FireShield is recommended for [partition wall and ceiling systems where specific fire resistance ratings are required](#). It provides a lightweight option where fire performance is required.

Knauf FireShield is manufactured and qualifies as Type X gypsum board per ASTM C1396.

- > [Fire-resistant solution](#)
- > [Provides better fire resistance than StandardShield](#)

Size: 1220 mm x 2440 mm
Thickness: 13 mm, 16 mm
Edge: Tapered



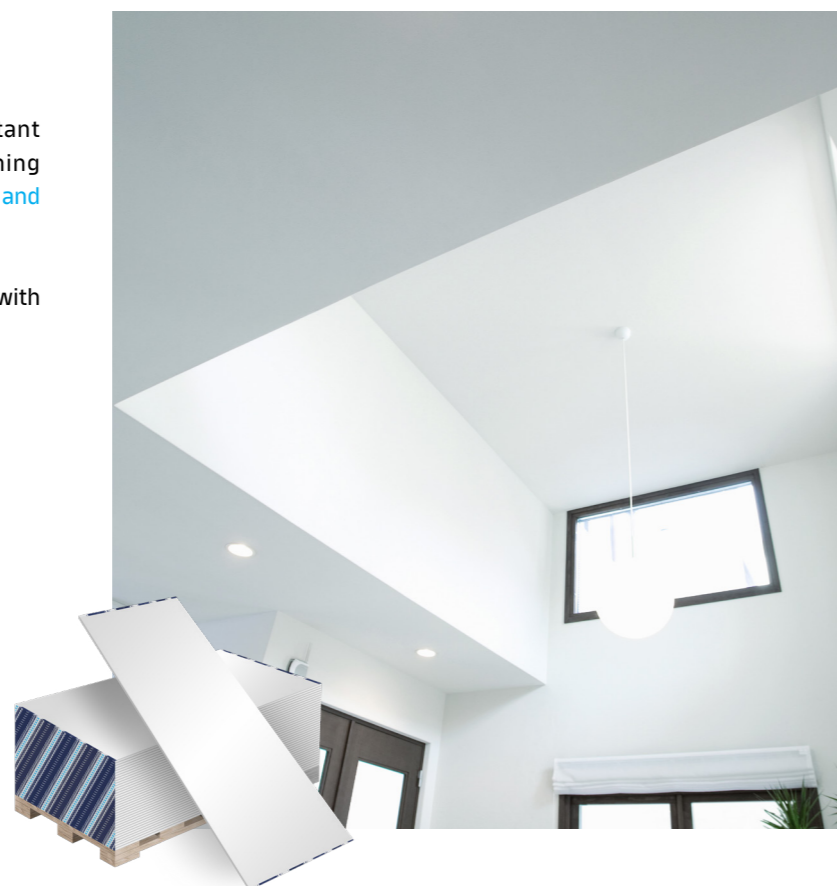
SPANSHIELD

Knauf SpanShield is a specialized sag-resistant alternative to StandardShield for ceiling lining applications. SpanShield is [suitable for residential and commercial applications](#).

Knauf SpanShield is manufactured in accordance with ASTM C1396.

- > [Lightweight ceiling lining](#)
- > [Sag-resistant ceiling solution](#)

Size: 1220 mm x 2440 mm,
1220 mm x 2740 mm
Thickness: 10 mm
Edge: Tapered



MOISTURESHIELD

Knauf MoistureShield is specifically designed for areas exposed to moisture, offering superior performance compared to StandardShield. Specially treated to minimize moisture absorption, it is ideal for [interior walls and ceilings in wet areas](#) such as bathrooms and kitchens. Additionally, it is suitable for use in eaves, making it a reliable choice for residential applications.

Knauf MoistureShield is manufactured in accordance with ASTM C1396.

- > [Moisture-resistant solution](#)

Size: 1220 mm x 2440 mm
Thickness: 9 mm, 13 mm, 16 mm
Edge: Tapered



DENSESHIELD

Knauf DenseShield is a high-performing plasterboard designed for partitions requiring superior robustness and fire resistance. It is suitable for high-traffic and demanding areas that need robust partitions such as hospitals, high-rise buildings, retail spaces, hotels, schools and offices.

Knauf DenseShield is manufactured in accordance with ASTM C1396.

> Impact-resistant solution that achieves Severe Duty rating

Size: 1220 mm x 2440 mm
 Thickness: 13 mm, 16 mm
 Edge: Tapered



MULTISHIELD

Knauf MultiShield is a dual-resistant gypsum board with the combined benefits and properties of FireShield and MoistureShield. It is suitable for interior walls and ceilings for areas where both fire and moisture resistance are required such as high-rise buildings, retail spaces, hotels and schools.

Knauf MultiShield is manufactured in accordance with ASTM C1396.

> Fire and moisture-resistant solution

Size: 1220 mm x 2440 mm
 Thickness: 13 mm, 16 mm
 Edge: Tapered

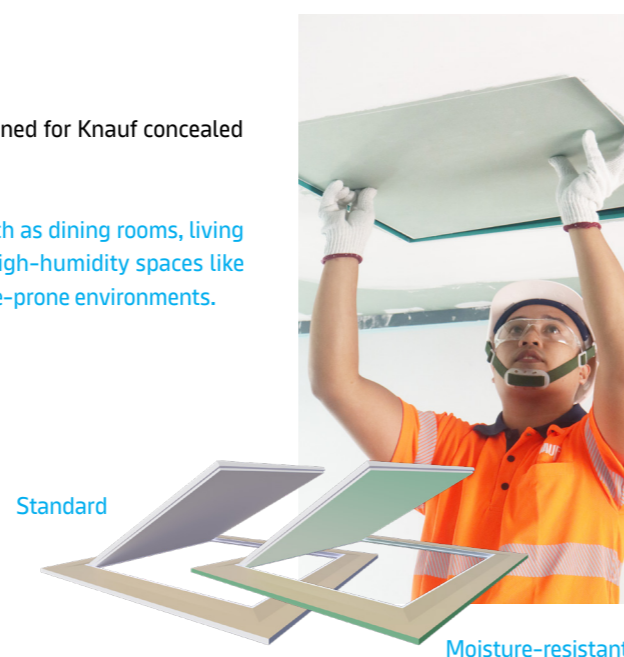


ACCESS PANELS

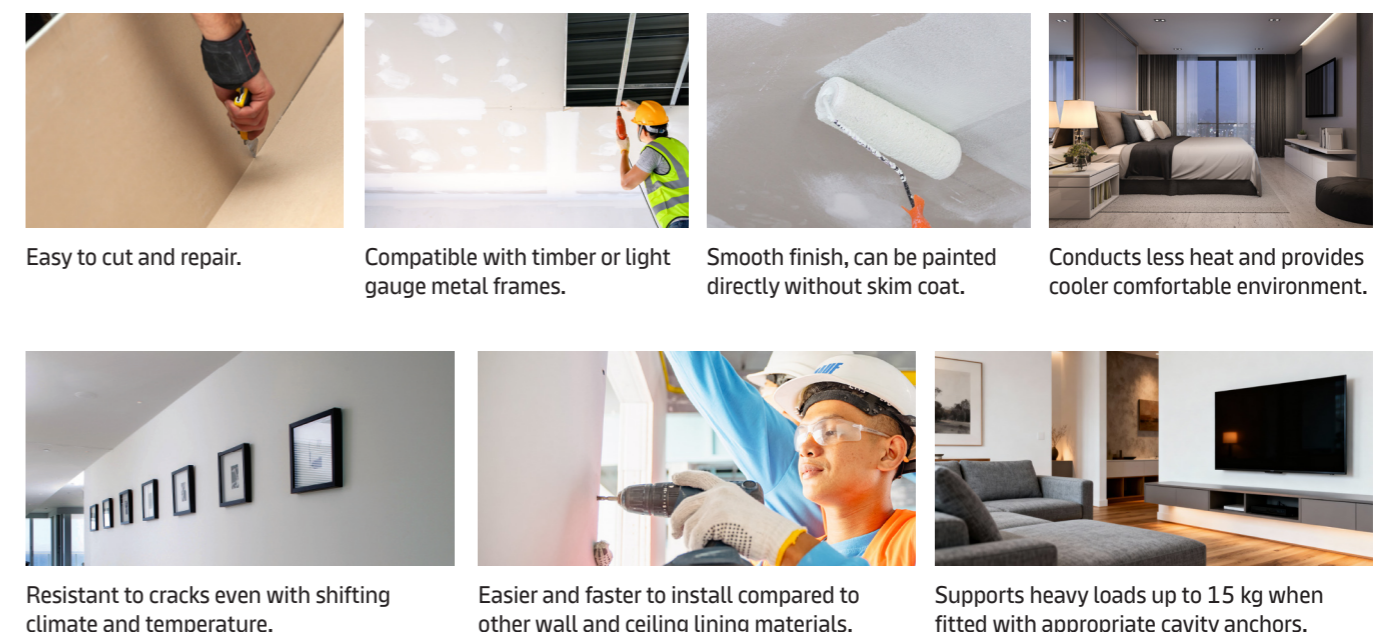
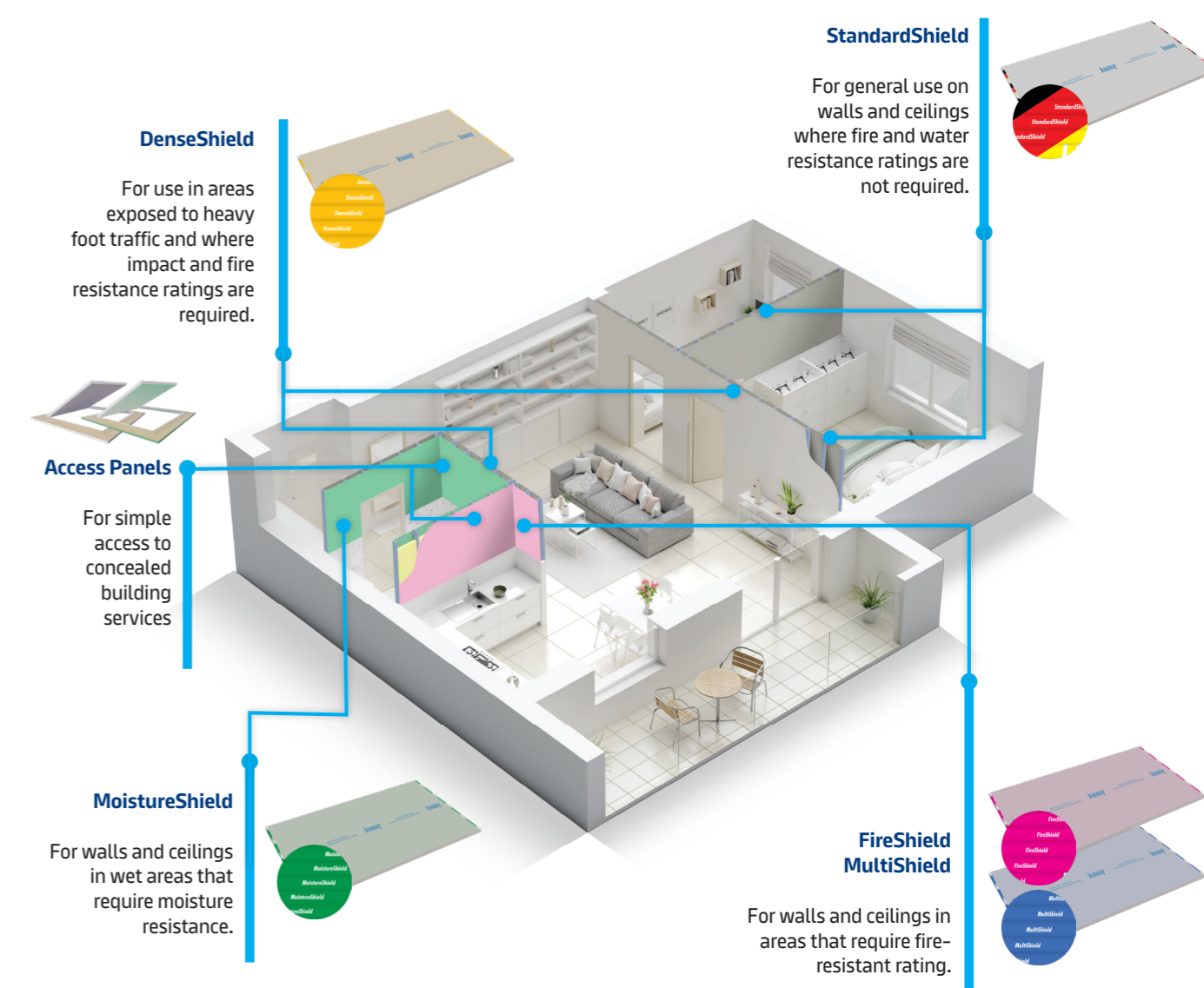
Knauf Access Panel is a versatile gypsum board panel specifically designed for Knauf concealed ceiling systems, providing convenient access for ceiling maintenance.

The product comes in two variants: Standard, ideal for general areas such as dining rooms, living rooms and hallways and Moisture-resistant, specially engineered for high-humidity spaces like bathrooms and kitchens, ensuring durability and performance in moisture-prone environments.

Panel Size:	Frame Size:
300 mm x 300 mm	500 mm x 500 mm
450 mm x 450 mm	650 mm x 650 mm
600 mm x 600 mm	800 mm x 800 mm



PLASTERBOARDS AND ACCESS PANELS APPLICATION



Joining & Finishing Solutions

PREMIUM JOINTING

Knauf Premium Jointing is a gypsum-based, all-purpose compound especially designed for flush jointing gypsum board, internal or external angles and fastener heads.

Size: 20 kg, 3 kg
 Nominal Setting Time: 35 – 45 min
 Shelf Life: 9 mo



PREMIUM PREMIX

Knauf Premium Premix is a lightweight, ready-to-use, air-drying compound used for all three coat applications and finishing coat for gypsum board joints, angles and fastener heads.

Size: 28 kg, 5.4 kg
 Nominal Drying Time: 24 hr
 Shelf Life: 9 mo



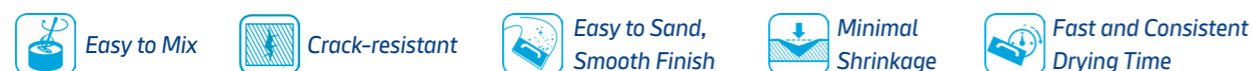
PAPER TAPE

Knauf Paper Tape is a high-performance reinforcing tape, favored by installers and jointers for its ability to strengthen and refine joints in interior gypsum panels. It ensures superior adhesion to the gypsum board paper liner, effectively preventing visible cracks and gaps for a seamless finish.

Dimensions: 50 mm x 75 m per roll



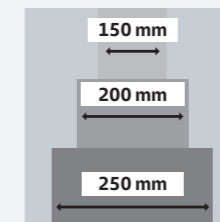
- Notes:
- Indicated "Shelf Life" applies only if the products are stored in accordance with Knauf's storage instructions.
 - Specified setting and drying times are based on a controlled environment. Please expect variations on setting and drying time based on site environment and/or climate conditions.



APPLICATION, STORAGE AND USAGE GUIDELINES

Application

- Premium Jointing is recommended for base coating plasterboard joints, angles and fastener heads when used in conjunction with Knauf finishing compounds.
- Premium Jointing is recommended for use as the first and second coat of the Knauf three coat jointing system.

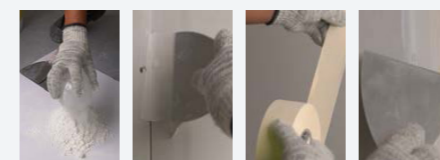


Storage

- Store under cover in a dry environment and protected from extreme temperatures. Storage in an unsuitable environment can shorten the product's shelf life.
- It is recommended to be used before the Best Before date displayed on the packaging. It may still be usable after that date if stored unopened in an appropriate environment.

Directions

- Surfaces must be clean and free from dust.
- Premium Jointing can be applied with hand and mechanical tools.
- The use of paper joint tape is recommended.
- Each coat of Premium Jointing compound must be allowed to set thoroughly before applying the next coat.
- Thoroughly clean all tools and equipment after use.
- On hot, windy days where there is risk of early dry outs, ensure adequate application of compounds.
- Under cold or wet conditions, allow a longer drying time before applying the following coat.
- The inclusion of other materials to a mix will impair the performance (e.g. reduced strength and poor adhesion).
- Do not apply over premixed and drying-type compounds.

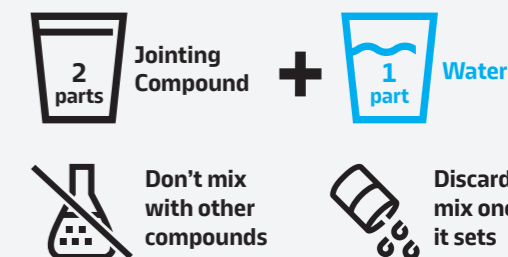


	Joint reinforcement tape	1 st COAT	2 nd COAT	3 rd FINISHING COAT	SAND + PAINT	SKIM COATING + PAINT
Using Premium Jointing						
Using Premium Premix					If required, sand joints lightly (150-220 grit size sand paper) prior to priming and painting.	Level 5 Finish: Skimcoat entire surface plus prime and paint. Required for areas with critical/severe light, dark tone paints or paint sheen levels other than flat.
Using both Premium Jointing and Premium Premix						
Level 1	For areas not open to public view; minimal finish.					
Level 2	For areas that require a basic finish; suitable for concealed surfaces.					
Level 3	For surfaces that will be painted; provides a smooth finish.					
Level 4	For areas visible to the public, such as corridors, living rooms and meeting rooms					
Level 5	For high-gloss or semi-gloss finishes; provides the highest level of finish for critical lighting conditions.					

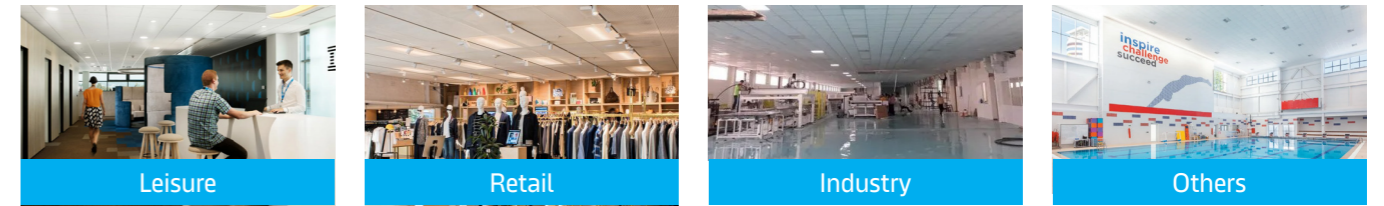
Mixing

- Always use clean cold water, tools and containers.
- Always add Premium Jointing to water (2:1 ratio).
- Mix only enough Premium Jointing to meet needs.
- Mix by hand or with a power mixer (max of 400 rpm) until a workable paste has been achieved.
- Do not overmix product as this may reduce the working time.
- Once setting has commenced, the Knauf Premium Jointing mix cannot be remixed and must be discarded after use.
- Do not mix with residues of previously used compounds. Use of dirty tools or containers may reduce working time and strength.

Mixing Ratio: (by weight)



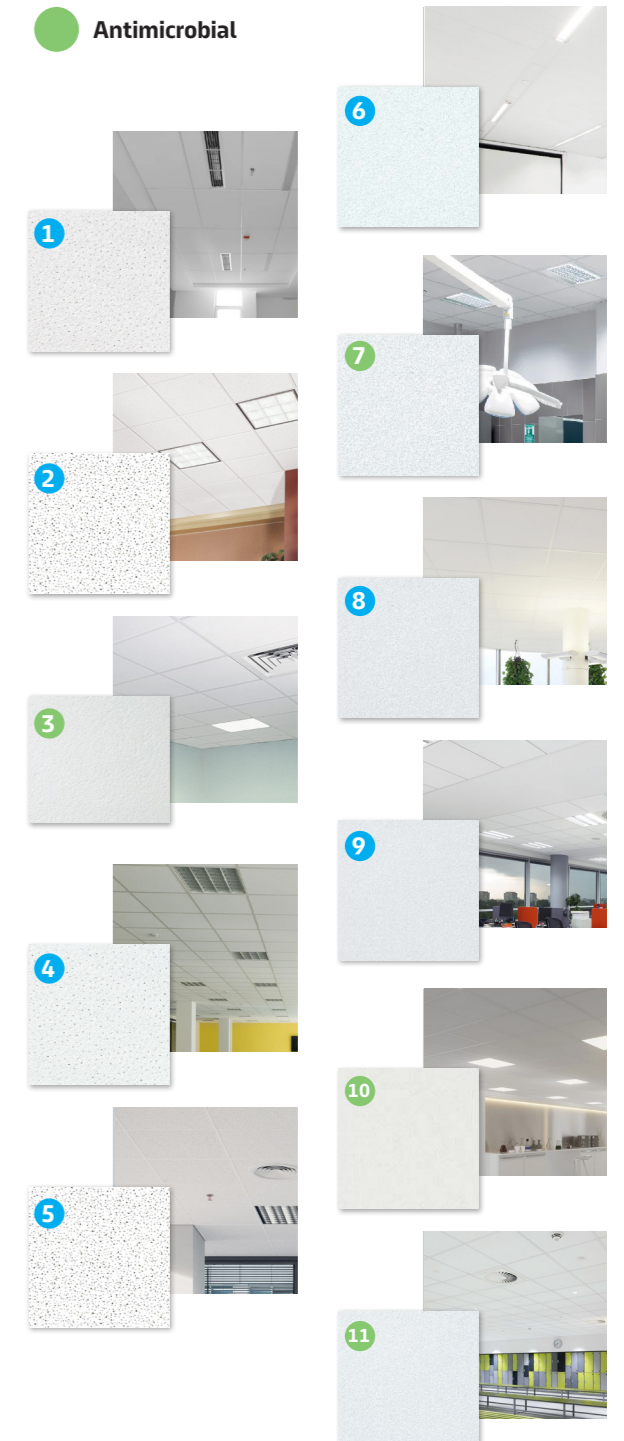
Knauf Ceiling Solutions



ACOUSTIC AND ANTIMICROBIAL CEILING TILES

Product Name	Basic			Mid			
	1 DUNE	2 FINE FISSURED	3 BIOGUARD PLAIN	4 DUNE MAX	5 FINE FISSURED HIGH NRC	6 ULTIMA	7 BIOGUARD ACOUSTIC
Surface	Sanded	Perforated	Smooth (Painted)	Sanded	Perforated	Smooth (fleece-laminated)	Smooth (fleece-laminated)
Sound absorption	NRC 0.50	NRC 0.60	N/A	NRC 0.70	NRC 0.70	NRC 0.70	NRC 0.70
Sound attenuation (dB)	≤ 33	≤ 35	35	33	35	39	40
Anti Microbial			Anti-microbial surface with excellent cleanability				Anti-microbial surface with excellent cleanability
Fire Reaction	CLASS 0/1 based on BS 476 Part 6 & 7	CLASS 0/1 based on BS 476 Part 6 & 7	CLASS 0/1 based on BS 476 Part 6 & 7	CLASS 0/1 based on BS 476 Part 6 & 7	CLASS 0/1 based on BS 476 Part 6 & 7	CLASS 0/1 based on BS 476 Part 6 & 7	CLASS 0/1 based on BS 476 Part 6 & 7 A2 s-1, d0 as per EN 13501-1
Humidity Resistance	RH99	RH99	RH99	RH99	RH99	RH99	RH99
Light Reflectance	≤ 85%	≤ 85%	≤ 87%	≤ 85 %	≤ 85 %	≤ 88%	≤ 85 %
Thermal Conductivity (W/mk)	λ = 0.052-0.057	λ = 0.052-0.057	λ = 0.060	λ = 0.060	λ = 0.052-0.057	λ = 0.060	λ = 0.060
Thickness (mm)	16	16	15	20	20	19	19
Nominal Weight (kg/m ²)	3.8 – 4.0	3.2	3.6	5.2	4.6	5.0	5.0
Clean Room	N/A	N/A	N/A	N/A	N/A	ISO 3 as per ISO 14644-1	ISO 3 as per ISO 14644-1
Sustainability (recycled content based on EN ISO 14021)	≤33%	39%	≤ 36%	63 %	≤ 55%	41%	41%

High			
8 PERLA OP	9 ULTIMA OP	10 HYGENA ACOUSTIC	11 BIOGUARD ACOUSTIC OP RH100
Smooth			
NRC 0.90	NRC 0.95	NRC 0.85	NRC 0.90
25	26	29	≤29
		Anti-microbial surface with excellent cleanability	Anti-microbial surface with excellent cleanability
CLASS 0/1 based on BS 476 Part 6 & 7	CLASS 0/1 based on BS 476 Part 6 & 7	Euroclass A2-s1, d0 as per EN 13501-1 Class A per ASTM E84	CLASS 0/1 based on BS 476 Part 6 & 7 A2 s-1, d0 as per EN 13501-1
RH99	RH99	RH95	RH100
≤ 85%	≤ 88%	87%	88%
λ = 0.040	λ = 0.060	λ = 0.040	λ = 0.040
15	19	15	19
2.6	3.5	2.9	5.2
ISO 5 as per ISO 14644-1	ISO 4 as per EN ISO 14644-1	ISO 4 as per EN ISO 14644-1	ISO 3 as per ISO 14644-1
44%	44%	48%	35%



IMPRESSIONS

Acoustic ceiling tile featuring a micro-fissured, non-directional surface pattern ideal for moderate sound absorption needs.

Application: Offices, retail, warehouse, schools, showrooms, restaurants
 Size: 600 mm x 600 mm, 2 ft x 2 ft, 600 mm x 1200 mm, 4 ft x 4 ft
 Material: Water-felt mineral fiber
 Nominal Thickness: 15 mm
 Sound Absorption: NRC 0.60
 Sound Attenuation: 33-35 dB
 Light Reflectance: 86%



MARS

Offering a combination of sustainable aesthetics and outstanding performance, these panels are specially manufactured to maximize sound control and anti-sag performance.

Application: Offices, healthcare, classrooms, corridors, lobby areas, kitchens
 Size: 600 mm x 600 mm, 2 ft x 2 ft, 600 mm x 1200 mm, 4 ft x 4 ft
 Material: Water-felt mineral fiber
 Nominal Thickness: 19 mm
 Sound Absorption: NRC 0.70
 Sound Attenuation: 37 dB
 Light Reflectance: 89%



OLYMPIA MICRO PERFORATED

Acoustic ceiling tile with a lightly granulated surface texture, suitable for moderate sound absorption requirements.

Application: Offices, classrooms, lobbies, hotels, conference areas, retail stores
 Size: 600 mm x 600 mm, 2 ft x 2 ft, 600 mm x 1200 mm, 4 ft x 4 ft
 Material: Water-felt mineral fiber
 Nominal Thickness: 16 mm
 Sound Absorption: NRC 0.55
 Sound Attenuation: 30-33 dB
 Light Reflectance: 88%



GALAXY

Acoustic ceiling tile featuring a micro-fissured, non-directional surface pattern ideal for moderate sound absorption needs.

Application: Offices, retail, department stores and corridors
 Size: 600 mm x 600 mm, 2 ft x 2 ft, 600 mm x 1200 mm, 4 ft x 4 ft
 Material: Water-felt mineral fiber
 Nominal Thickness: 16 mm
 Sound Absorption: NRC 0.50 (ME32212, 3212 not included)
 Sound Attenuation: 30-33 dB
 Light Reflectance: 86%



SHADES AND CONDADO

Knauf vinyl ceiling tiles provide a variety of uniquely different designs that adds a beautiful elegance to your space. A reinforced gypsum board core is finished with a very high-quality lining that offers a durable face that is easy to clean.

Choose from two clean-looking designs, Shades for a lemon skin surface and Condado for an orange skin surface.

Application: Hospitals, laboratories, kitchens
 Material: Reinforced gypsum board core with high quality vinyl lining
 Size: 610 mm x 1220 mm
 Thickness: 9 mm



GRID: PRELUDE XL32 24 MM (15/16") EXPOSED TEE SYSTEM

Light-duty exposed tee system for quick installation and reliable alignment, with hot-dipped galvanized, double-web steel for improved red-rust resistance in humid environments.

- Features:
- Hot dipped galvanized coating
 - Rotary stitched
 - Easy to remove and relocate

- Advantages:
- Prevents red rusting better than painted or electrogalvanized
 - Prevents torsion during installation
 - Easily adjustable without special tools



	Item Number	Description	Dimensions			
			Rout Spacing	Length	Width	Height
	BP7342101C*	Main Beam: Flat Faced 24mm Tee (C3 Coupling Connection)	150 mm	3000 mm	32 mm	34 mm
	BP7347101C*		6"	120"	1-1/4"	15/16"
	BP313061	Cross Tee: Flat Faced 24mm Tee (XL Clip Connection - override with Main Beam)	600 mm	1200 mm	27 mm	24 mm
	XL7147WH		24"	48"	1-1/16"	15/16"
	BP312011		-	600 mm	25 mm	24 mm
	XL7124WH		-	24"	1"	15/16"
Wall Mounting						
	BPT1935H	3000 mm Angle Molding	-	3000 mm	19 mm	19 mm

Perforated Plasterboards

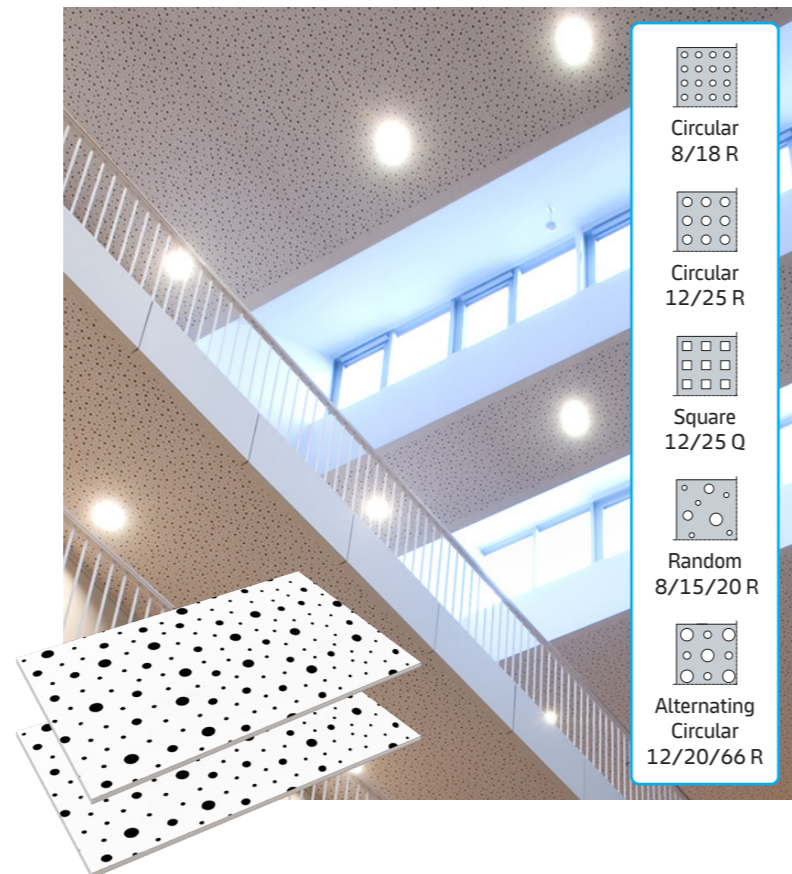
CLENEO ACOUSTIC

Knauf Cleneo Acoustic delivers excellent acoustic performance and stunning aesthetics. It combines unrivalled [sound absorption performance and attractive design](#) in one easy-to-install board.

Cleneo Acoustic is the smart choice for all commercial applications.

- > Improve indoor acoustics
- > Provide attractive solutions for finishing

Size: 1980 mm – 2000 mm x
(varies by design) 1188 mm – 1200 mm
Thickness: 12.5 mm
Edge: Lap joint, Surrounding notch joint
Sound Absorption: NRC 0.45-0.70



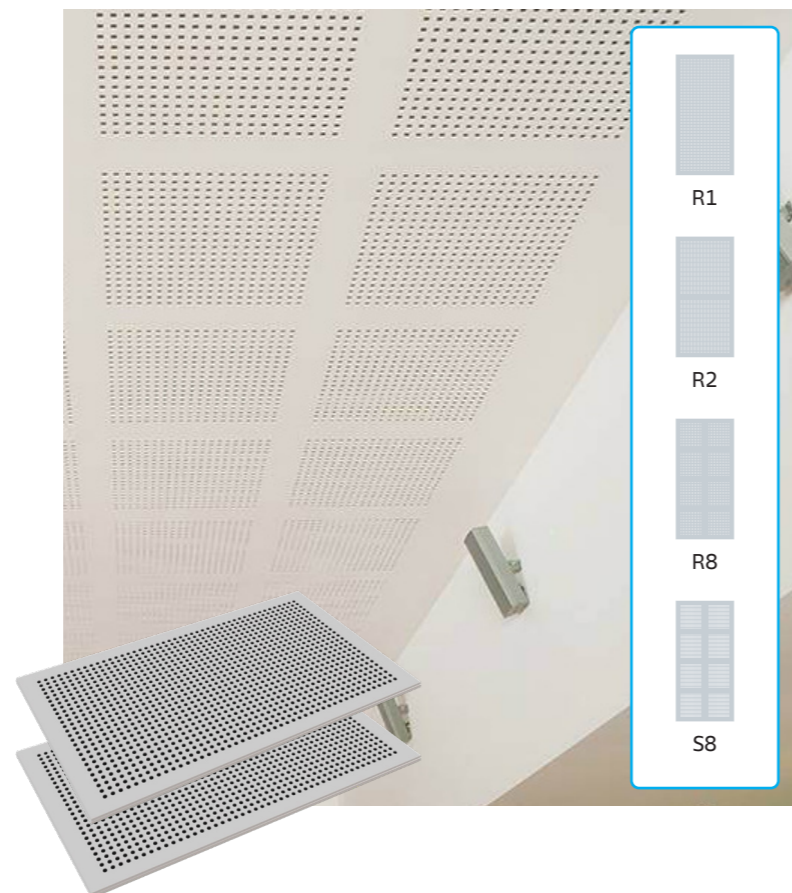
ECHOSTOP

Knauf Echostop is a sound absorptive perforated gypsum board available in either square or round design perforations, ideal for decorative applications. It is [recommended for use as wall or ceiling lining where sound absorption is required](#).

Superior NRC capabilities that is excellent in managing echo inside a room.

- > Enhanced acoustic comfort
- > Available in four stylish designs

Size: 1200 mm x 2400 mm
Thickness: 12 mm
Edge: Tapered
Sound Absorption: NRC 0.65-0.85



Cement Board

KNAUF AQUAPANEL EXTERIOR CEMENT BOARD

The Knauf Aquapanel Outdoor offers a high-performance and sustainable solution for exterior dry lining. [Outstanding protection against high humidity and moisture](#). Sustainable solutions for drylining style construction of exterior walls, claddings and ceilings. Ideal for exterior ceilings and walls exposed to moisture, wind and coastal conditions, its components are designed for maximum durability and performance.

- > Easy to install, cut, score and snap
- > No pre-drilling for fasteners
- > 100% water-resistant
- > Mold and mildew-resistant
- > Noncombustible (A1), complies with EN 13501

Size: 1200 mm x 2400 mm
Thickness: 12.5 mm



Physical properties	
Min. bending radius for 1,200 mm wide board (m)	3
Min. bending radius for 300 mm wide strip (m)	1
Weight (kg/m ²)	approx. 16
Dry bulk density (kg/m ³) according to EN 12467	approx. 1,150
Bending strength (MPa) according to EN 12467	≥ 7
Tensile strength perpendicular to the plane of the board (N/mm ²) according to EN 319 0.65	0.65
Shearing strength (N) according to EN 520	607
pH-value	12
Thermal conductivity (W/mK) according to EN ISO 10456	0.35
Thermal expansion (10–6 K–1)	7
Water vapour diffusion coefficient μ (-) according to EN ISO 12572	66
Length variation 65% - 85% humidity (mm/m) according to EN 318	0.23
Thickness variation 65% - 85% humidity (%) according to EN 318	0.2
Building material class according to EN 13501	A1 non-combustible
Certificate of conformity (COC) according to BS 476-4:1970 (Singapore)	non-combustible
Fungus Resistance according to ASTM D3273-16	Rating 10 (0 defacement by mold growth)
Fungus Resistance according to ASTM G21-15	Rating 0 (No fungal growth)

ASTM Certifications

WHAT ASTM STANDARDS ARE WE ACHIEVING WITH THE TESTS?



ASTM C1396/C1396M-17 Standard Specification for Gypsum Board

ASTM C1396/C1396M-17 is a 2017 standard specification by ASTM International for gypsum boards, detailing requirements for use in construction walls, ceilings and partitions.

It includes criteria for dimensions, physical and performance properties and covers different types like regular, moisture-resistant and fire-resistant boards.

This ensures quality and consistency with testing methods included. Construction professionals use it for compliance and quality assurance.



ASTM E84 Standard Test Method for Surface Burning Characteristics of Building Materials

ASTM E84 is widely used in the construction industry, it is a test method designed to evaluate the fire performance of building materials by measuring their surface burning characteristics.

This test is essential for ensuring that building materials comply with fire safety standards, helping to minimize the risk of fire spread and smoke-related hazards in buildings



ASTM E136 Standard Test Method for Assessing Combustibility of Materials Using a Vertical Tube Furnace at 750°C

It is a widely recognized test designed to determine whether a material is noncombustible under specific conditions.

The test assesses the combustibility of building materials by subjecting them to high temperatures (750°C or 1382°F) in a controlled environment. Its primary purpose is to classify materials as either noncombustible or combustible, which is essential for ensuring fire safety of both construction and occupancy.



ASTM D5116 Standard Guide for Small-Scale Environmental Chamber Determinations of Organic Emissions from Indoor Materials/Products

It is a standard developed by ASTM International that provides guidelines for testing and measuring the emissions of volatile organic compounds (VOCs) from indoor materials and products using small-scale environmental chambers.

This standard is commonly used to evaluate the impact of building materials, furnishings and other indoor products on indoor air quality. It helps manufacturers and researchers assess the VOC emissions of their products to ensure they meet health and environmental standards.



ASTM C474 Standard Test Methods for Joint Treatment Materials for Gypsum Board Construction

ASTM C474 is a standardized test method that assesses the physical and performance characteristics of joint treatment materials used in gypsum board (drywall) systems, including joint compounds, reinforcing tapes and finishing products.

It specifies controlled laboratory procedures to evaluate properties such as adhesion and bond strength, crack and shrinkage resistance, working consistency, setting behavior and overall durability to verify proper application and long-term performance. Compliance with ASTM C474 indicates that the material meets established industry criteria for quality, reliability and consistent finishing results in gypsum board construction.

Knauf Academy



Knauf Academy is an initiative of Knauf Philippines to deliver specialized wall and ceiling installation training to help laborers elevate their technical knowledge, skills and expertise. Focused on areas such as gypsum product installation and technical proficiency, the Academy aims to set a benchmark for excellence in the industry. By cultivating a highly skilled and sustainable workforce, Knauf Academy plays a pivotal role in shaping the future of the construction and helping local laborers get employment.



The Knauf Academy Training Van is a mobile training solution to bring trainings directly at project sites and offices. This innovative approach eliminates the challenge of coordinating schedules and gathering everyone in one location. By bringing the training to our partners and clients, Knauf has made learning more accessible, efficient and convenient, ensuring that valuable knowledge and skills are delivered without disrupting daily operations.

MODULE 1 INTRODUCTION TO GYPSUM BOARD

- Benefits of Using Gypsum Boards
- Types of Gypsum Boards
- Gypsum Board Handling and Stocking
- Gypsum Board Repairs
- Cutting Gypsum Boards

MODULES 2 AND 3 STANDARD PARTITION AND CONCEALED CEILING SYSTEM INSTALLATION

- Introduction to Drywall
- Stud Layout
- Standard Partition Components
- Installation Procedures
- Opening Details

MODULE 4 TAPING AND JOINTING

- Introduction to Taping and Jointing
- Jointing Products
- Levels of Finish
- Do's and Don'ts of Jointing
- Application Procedures

Sign up in two ways!

1. Scan QR code



2. Contact +63 917 836 5371

Send a text with the following format:
TRAINING INQUIRY,
<Your Name>, <Your Location>, <Your Email
Address>, <Your Mobile Number>

***Build
on us.***



Contact Us!



Find out more at:

www.knauf.com/en-PH

Phone: (+63) 917 853 3593



Knauf Gypsum Philippines, Inc.

Pasig City Office: 14F – Office 2, One Paseo Bldg, Paseo de Arco
Cor. E. Rodriguez Ave.(C5) ArcoVia City, Pasig City, 1604 Philippines

Plant: Km. 117 National Highway Calaca Industrial Seaport Corp.,
Brgy. Lumbang Calzada, Calaca, Batangas, 4212 Philippines

Knauf Academy: Lot 35 Block 11, E. Rodriguez Jr. Avenue,
Bagumbayan, Quezon City, 1008 Philippines

Hotline Number: (+63) 917 853 3593

Email: info.ph@knauf.com

Website: www.knauf.com/en-PH

Product Catalog 2026 v1.0 (Apr)

Build on us.