

Note on English translation / Hinweise zur englischen Fassung

This is a translation of the product data sheet valid in Germany.

All stated details and properties are in compliance with the regulations of the German standards and building regulations. They are only applicable for the specified products, system components, application rules, and construction details in connection with the specifications of the respective certificates and approvals.

Knauf Gips KG denies any liability for applications outside of Germany as this requires changes acc. to the respective national standards and building regulations.

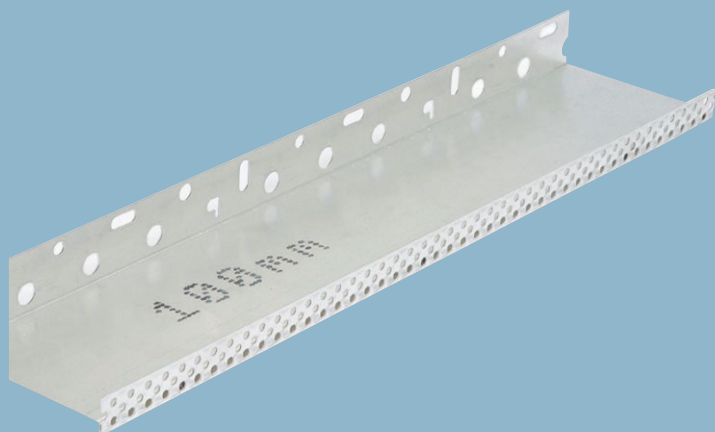


Plaster and Façade Systems

P385s.de

Product Data Sheet

2021-07



Plinth connection profile

Aluminium profile without drain edge

Product description

Plinth connection profile made of aluminum with upward bevel and additional drip edge. Up to 200 mm single piece projection, from 220 mm the plinth connection profile has two pieces and can be used variably up to 300 mm.

Storage

Store dry and flat.

Quality

The product is subject to continuous factory production control.

Properties and added value

- Aluminium without drain edge
- With drip edge
- Plinth profile with 6, 10 and 14 mm drain edge

Field of application

For the plinth connection with WARM WALL systems. Can be used for crack resistance with push on plinth profile, optionally with 6 mm or 10 mm drain edge or 14 mm for scratch render.

Application

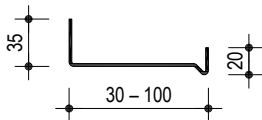
Fasten the plinth connection profile horizontally and flush at the determined height with nailable plugs at a spacing of approx. 300 mm. Compensate for substrate tolerances with washers. For easier installation the Knauf Assembly Kit for plinth profiles is recommended. Connect the joints of the plinth profiles using H connectors to prevent projections at the joint locations and to compensate for thermal expansion. Provide the outside corners with the appropriate mitring.

Push on plinth profile made of plastic with drip edge and integrated reinforcement mesh strips on the plinth connection end profile butt-jointed with an offsetting to plinth connection profile panel. After installation, the insulation boards are applied on top again staggering the profile and board joints.

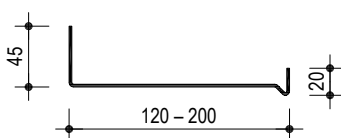
In case of perimeter insulation boards / plinth insulation boards on existing ETICS or in case a plinth connection profile is used, insert Fugendichtband FD joint sealing tape between the perimeter insulation board / plinth insulation board and the plinth connection profile.

If ETICS is connected to existing perimeter insulation boards / plinth insulation boards, use of a Peri plinth connection profile is recommended. Insertion of a joint sealing tape is unnecessary. For medium-layer reinforcement (from 5 mm), Knauf plinth connection profiles are additionally recommended for higher crack resistance.

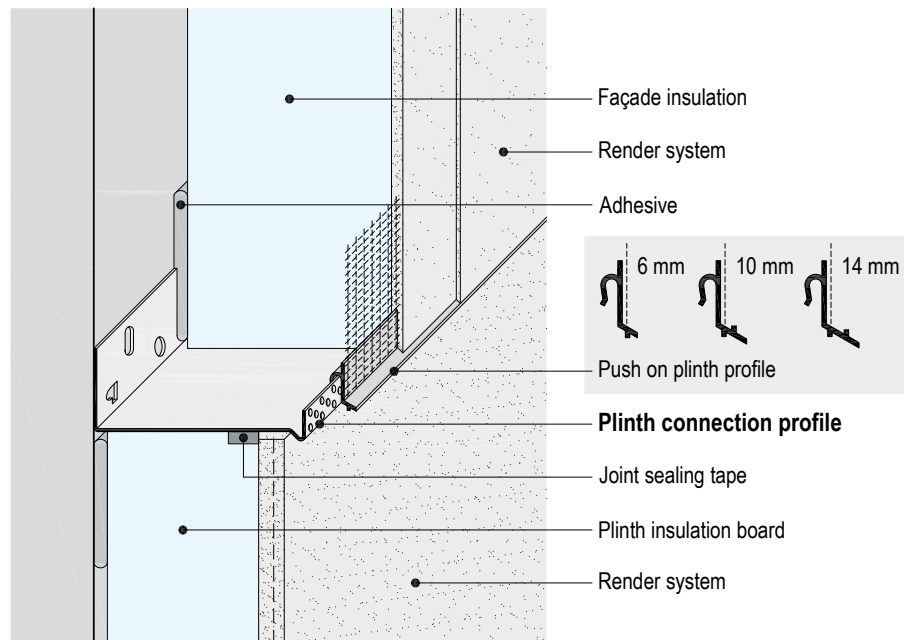
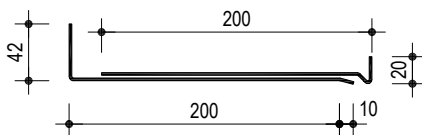
Insulation material thickness up to 100 mm



Insulation material thickness 120 to 200 mm



Insulation material thickness 220 to 300 mm (variable)



Technical data

Size mm	Material	Thickness mm	Length [mm]
30 – 80	Aluminium AlMg3, 5754 H24	0.60 ± 0.04	2500 ± 10
100 – 200	Aluminium AlMn1, 3103 H24	0.80 ± 0.04	
> 200 – 300	Aluminium AlMn1, 3103 H24	1.50 ± 0.04	

Product range

Description	Projection (insulation thickness) / size	Packaging unit	Material number	EAN	
Plinth connection profile	30 mm	10 pieces / bundle	00112462	4005813703151	
	40 mm		00016189	4005813669815	
	50 mm		00059602	4005813669822	
	60 mm		00047716	4005813702680	
	80 mm		00056075	4005813669853	
	100 mm		00016192	4005813669877	
	Plinth profile	120 mm	6 pieces / bundle	00016040	4005813669884
		140 mm		00112463	4005813669891
		160 mm		00112464	4005813712474
		180 mm		00112465	4005813656853
		200 mm		00112466	4005813712498
		Variable 220 – 300 mm		4 pieces / bundle	00124187
Plinth profile	6	15 pieces / bundle	00111986	4003982208743	
	10		00123501	4005813711019	
	14		00111987	4003982208750	
Assembly kit	10 pieces H connector, 50 pieces washers at 3 mm 75 pieces nailable plugs Ø 8 mm, 80 mm length		00111756	4003950079221	



Videos for Knauf systems and products can be found under the following link:
www.youtube.com/knauf



The iPad App Knauf Infothek now provides all the current information and documents from Knauf Gips KG at any time and in every location in a clear and comfortable way.
[Knauf Infothek](#)

Knauf Direct
Technical Advisory Service:

▶ knauf-direkt@knauf.de

▶ www.knauf.de

Knauf Gips KG Am Bahnhof 7, 97346 Iphofen, Germany

All technical changes reserved. Only the current printed instructions are valid. The stated information represents current state-of-the-art Knauf technology. The entire state of approved engineering rules, appropriate standards, guidelines, and rules of craftsmanship are not included herewith. These and all application instructions have to be adhered to separately by the installer. Our warranty is expressly limited to our products in flawless condition. All application quantities and delivery amounts are based on empirical data that are not easily transferable to other deviating areas.
All rights reserved. All amendments, reprints and photocopies, including those of excerpts, require our expressed permission.