

KNAUF

***Safeboard
X-ray Protection
Gypsum Board***



Build on us.

Safeboard

General Information

Knauf Safeboard is an X-ray shielding gypsum board with a barium sulphate core. It effectively and significantly reduces the amount of lead needed within X-ray shielding partitions, in many cases removing the need for lead altogether. Knauf Safeboard partition is designed to suit in a hospital and clinic where the X-ray apparatus is installed like General Radiology Room, Dental Clinic, Mammography Room, Veterinary Clinic and CT Scan Room.

- 100% lead-free
- X-ray protection
- Easy installation
- Lightweight
- Fire and sound protection

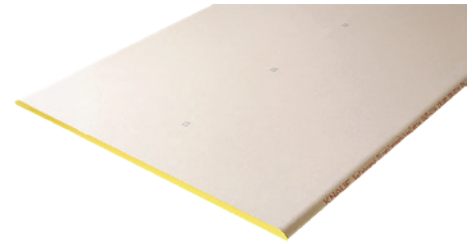
Product Information

Knauf Safeboard

Thickness (mm)	Width (mm)	Length (mm)	Edge
12.5	625	2400	Round

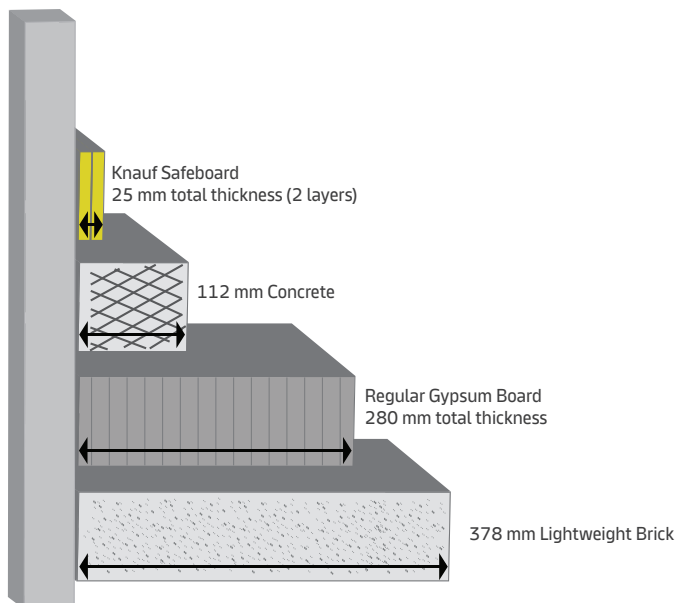
Knauf Safeboard Filler

Pack Size	Coverage	Color
5 kg	10 m ² /bucket	Yellow



Instruction
Install Knauf Safeboard with Knauf KW50 Partition Metal Profile certified with TIS 863-2532 standard for a safety, strong, and durable wall.

A thickness comparison between the 1.4 mm lead-equalvalence material for a 100 kV Radiaton Machine



Knauf Safeboard passes the radiation protection test by domestical and international institutes



TÜV NORD Röntgentechnik, Germany following DIN EN 61331-1 standard



Health Protection Agency, UK



Department of Medical Sciences; Ministry of Public Health

Planning aid for individual X-ray shielding solutions with Safeboard

Use a lead thickness set by the radiology room designer as a reference by have a tube voltage (kV) as a factor.

Lead equivalence of Knauf Safeboard (mm) depending on the tube voltage							No. of boards	Total thickness (mm)
60 kV	70 kV	80 kV	90 kV	100 kV	125 kV	150 kV		
0.45	0.60	0.75	0.70	0.70	0.50	0.40	1	12.5
0.90	1.20	1.50	1.40	1.40	1.00	0.80	2	25
1.35	1.80	2.20	2.10	2.10	1.50	1.10	3	37.5
1.80	2.30	2.90	2.80	2.80	2.00	1.40	4	50
				3.40	2.40	1.70	5	62.5
				4.00	2.80	2.00	6	75



Example

Requirement

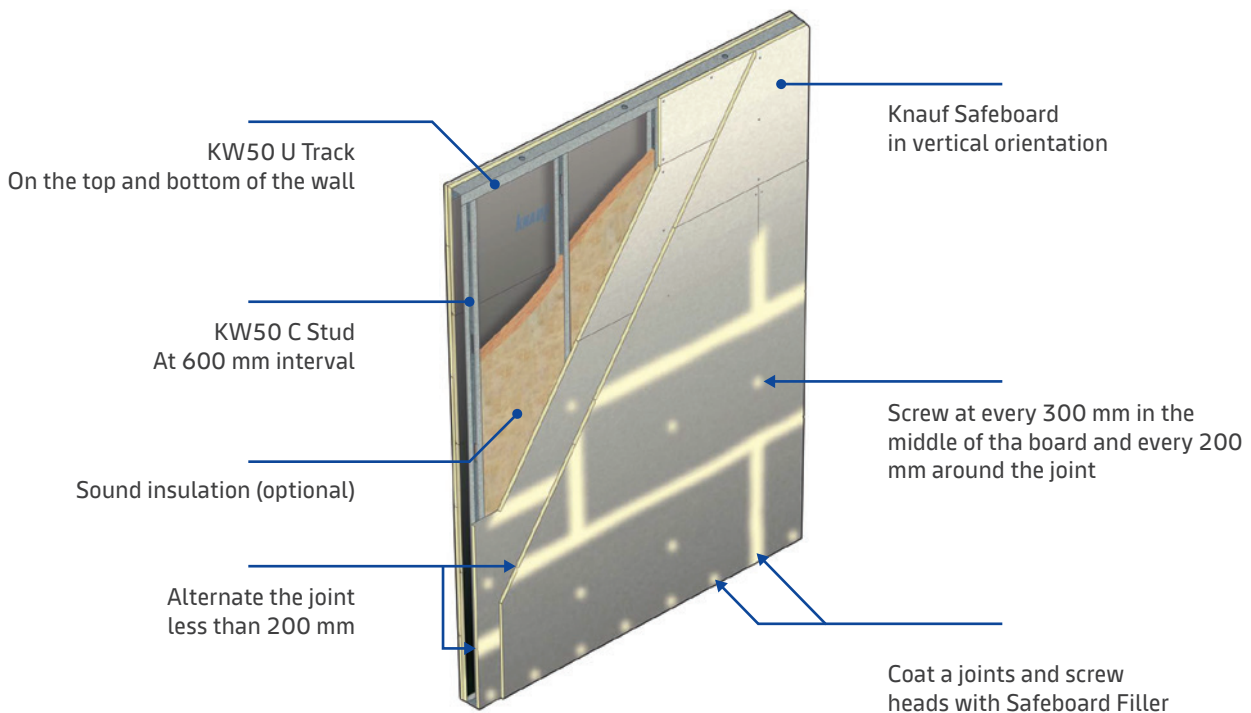
CT Scan room use a 125 kV machine, must use a 2 mm lead.

Selection

Install 4 layers of Knauf Safeboard, 50 mm total thickness.

4 layers of Knauf Safeboard installation example

2 layers on each side of the wall



KNAUF

The Siam Gypsum Industry (Saraburi) Co., Ltd.
Pakin Building, 5th floor, 9 Ratchadapisek Road,
Dindang, Bangkok 10400

☎ +66 2 555 0015

✉ marketingknaufgypsumthailand@knauf.com

🌐 www.knauf.com

📍 Knauf Thailand

