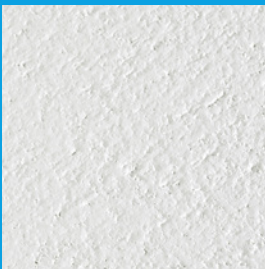


KNAUF

Armstrong RETAIL



© Nike Bourgeois

Build on us.

Armstrong RETAIL offers a smooth, unperforated contemporary visual that provides energy savings due to its high level of light reflectance

- Excellent light reflectance (87%)
- Ideal for retail environments

Characteristics	Detailed information															
Edge details Additional edge details on request		Board 														
Thickness (mm)		12														
Dimensions (mm)		600 x 600 1200 x 600														
System		Exposed demountable - System C														
Weight		3.1 kg / m²														
Colour		 White														
Sound absorption		EN ISO 354 $\alpha_w = \mathbf{0.15(L)}$ as per EN ISO 11654 - Class E <table border="1"> <thead> <tr> <th>Frequency f (Hz)</th> <th>125</th> <th>250</th> <th>500</th> <th>1000</th> <th>2000</th> <th>4000</th> </tr> </thead> <tbody> <tr> <td>α_p</td> <td>0.30</td> <td>0.25</td> <td>0.15</td> <td>0.10</td> <td>0.10</td> <td>0.30</td> </tr> </tbody> </table> NRC = 0.15 as per ASTM C 423	Frequency f (Hz)	125	250	500	1000	2000	4000	α_p	0.30	0.25	0.15	0.10	0.10	0.30
Frequency f (Hz)	125	250	500	1000	2000	4000										
α_p	0.30	0.25	0.15	0.10	0.10	0.30										
Sound attenuation		EN ISO 10848-2 $D_{n,f,w} = \mathbf{31 dB}$ as per EN ISO 717-1 CAC = 31 dB as per ASTM E 413-10														
Fire reaction		Euroclass A2-s1, d0 as per EN 13501-1														
Light reflectance		85%														
Thermal conductivity		$\lambda = \mathbf{0.060 W/mk}$ as per EN 12667														
Humidity resistance		90% RH														
Indoor air quality		 A+ E1														
Cleanability																
Sustainability		 EN 15804 21.8 BIOSOLUBLE WOOL EC 1272/2008 Annex D www.blauer-engel.de/uz132														