

KNAUF

AQUAPANEL® CEMENT BOARD INDOOR

Redefining expectations for building walls
in wet indoor areas

AQUAPANEL®

Build on us.

CONTENTS

Introduction	4
System overview	6
System components	8
Installation methods	10
Masonry Installation	11
Installation of walls behind wood burning stoves	12
Surface finishing	13
Building curved walls	14
Technical product information	15
AQUAPANEL® Cement Board Floor Tile Underlay	18
Case study – The Wave, Coventry	20
Training courses available	23
Look to the future – Build on us	24



APPROVED

Suitable for use in new build projects



LIGHTER

Knauf AQUAPANEL® Cement Board Indoor makes handling easier, reducing stress and strain on the body – while still delivering dimensional stability and best-in-class performance in wet areas.



EASIER

Simple to score and snap, no cutting required. Bending radius of 1m, without the need to cut strips. Knauf AQUAPANEL® Cement Board Indoor features two alternative joint treatments, so it is easy to install.



FASTER

As easy to use as gypsum board, Knauf AQUAPANEL® Cement Board Indoor provides fast installation and high productivity even in the most challenging wet areas.



WIDE RANGE

Comprehensive range extending beyond a board for interior walls, including 6mm Knauf AQUAPANEL® Cement Board Floor Tile Underlay for tiled floor coverings and Knauf AQUAPANEL® Cement Board SkyLite for ceilings with a dedicated metal mounting system.



This brochure focuses on Knauf AQUAPANEL® Cement Board Indoor for walls and ceiling. For further information on ceilings, refer to Knauf AQUAPANEL® Interior Ceiling System Brochure.

An introduction to Knauf AQUAPANEL® Cement Board Indoor

Dampness is the principal cause of structural damage. In many areas of a construction, the ability to withstand damp and water is critical for the quality and durability of a building unit.

Knauf AQUAPANEL® Cement Board Indoor is approved for use in all domestic and commercial wet areas, in laboratories, kitchens, swimming pool surroundings and saunas. Protection from damp is also important in cellars and garages because these building units are often at risk from masonry damp, ground damp, ground water or even flooding.

Manufactured from inorganic materials, unaffected by water and resistant to mould, Knauf AQUAPANEL® Cement Board Indoor delivers exceptional stability in the most challenging wet conditions – even when exposed to chlorine.

Knauf AQUAPANEL® Cement Board Indoor is the ideal building panel for such areas. It is unaffected by water and dimensionally stable. The board remains unaffected even when immersed in water. It is resistant to mould growth and is therefore also suitable for use in areas where there is a high level of damp.

Designed specifically to meet the needs of installers and contractors, Knauf AQUAPANEL® Cement Board Indoor has always met high expectations. Now these expectations are taken to a new level.

Re-engineered without compromise on performance, Knauf AQUAPANEL® Cement Board Indoor weighs just 11kg/m², making it even easier to handle and faster to install.

From swimming pool surroundings, steam rooms and saunas to communal showers and kitchen areas, Knauf AQUAPANEL® Cement Board Indoor is the preferred choice.

Construction materials for wet indoor areas must meet a variety of requirements and display the following characteristics:

- Unaffected by water and dimensional stability
- Resistance to mould
- Moisture vapour permeability for optimum indoor climate

Water appears in a construction as:

- Standing and flowing water
- Capillary water
- Dripping water
- High relative air humidity

Features & Benefits of Knauf AQUAPANEL® Cement Board Indoor:

- Unaffected by water
- Mould resistant
- Non-combustible (A1)
- Robust and reliable with high impact resistance
- Easy installation – only 11kg/m² meaning less effort in handling; no pre-drilling required
- Can be curved to a radius of 1m
- Ready keyed for tiling
- Support tiles of up to 120kg/m² *

*specific build-up applies, refer to page 16 for additional details.



Certifications of Knauf AQUAPANEL® Cement Board Indoor



CE Marking

Knauf AQUAPANEL® Cement Board Indoor complies with EN 12467 Class 2.



Safe and hygienic solution

Knauf AQUAPANEL® Cement Board Indoor is 100% unaffected by water and completely inorganic, so there is no risk of mould. It meets the highest requirements for a safe and hygienic environment inside the building – as certified by the German Building Biological Institute Rosenheim (IBR).



Impact Resistance

Knauf AQUAPANEL® Cement Board Indoor has been tested for impact resistance. It has been officially certified by the Materials Testing Institute, University of Stuttgart (MPA) as having the rigidity and strength to withstand heavy ball impact.

No MgO

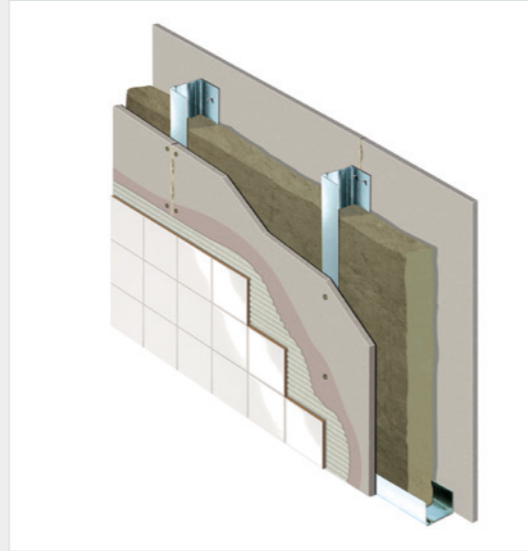
Contains no Magnesium Oxide (MgO).



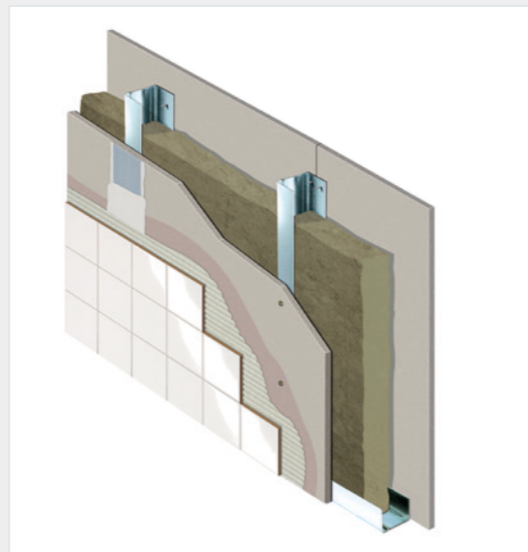
System overview

Typical wall applications

Joint treatment with Knauf AQUAPANEL® Joint Adhesive



Joint treatment with Knauf AQUAPANEL® Joint Filler & Skim Coating – white and Knauf AQUAPANEL® Tape



Jointed and skimmed with Knauf AQUAPANEL® Joint Filler & Skim Coating – white, Knauf AQUAPANEL® Tape, AQUAPANEL® Reinforcing Mesh and a paint finish



Knauf AQUAPANEL® Cement Board Indoor is unaffected by water, offering the perfect solution for walls that are exposed to moisture, chlorine and salt.



System component details

Knauf AQUAPANEL® Cement Board Indoor

Designed to be used as a high-performance tile backing board and is also ideal as a general building board. This is a tough, impact-resistant glass-fibre-reinforced cement tile backer for use in wet and humid areas. At 11kg/m², the board is lighter than other cementitious boards, making the installation easier and faster. A bending radius of 1m can be achieved without the need to cut the board into strips.



Dimensions (mm)			Material No.	Ex Stock	Pallet Details		
Thickness	Width	Length			Boards	m ²	Tonnes (Approx.)
12.5	900	1200	519734	✓	55	59.4	0.65
12.5	900	2400	508257	✓	55	118.8	1.30
12.5	1200	2400	519708	✓	55	158.4	1.74

Compliance: ETA-07/0173. Material Pricing Group: Q1

Note: 2400mm long boards are recommended for use in commercial applications.

Knauf AQUAPANEL® Maxi Screws (SN)

Corrosion-protected screws for fixing Knauf AQUAPANEL® to light gauge steel profiles (up to 0.7mm) as part of Knauf AQUAPANEL® Interior and Exterior systems. They have a needle point and countersunk heads. The 39 and 55 variants can also be used for timber frame.

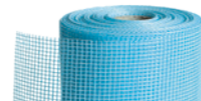


Dimensions (mm)		Material No.	Ex Stock	Pack Details	
Length	Diameter			Items per Carton	kg (Approx.)
25	4.2	87319	✓	1000	1.8
39	4.2	87283	✗	100	0.39
39	4.2	53500	✓	500	2.0
55	4.2	95644	✓	250	2.0

Compliance: EN 14566. Material Pricing Group: Q1

Knauf AQUAPANEL® Tape

This is a 100mm wide glass fibre tape with an alkaline-resistant coating. It is embedded into Knauf AQUAPANEL® Joint Filler – Grey, AQUAPANEL® Joint Filler and Skim Coat – White, or tile adhesive, to reinforce joints as part of a Knauf AQUAPANEL® Exterior or Interior system.



Roll Size		Material No.	Ex Stock	Carton Details	
Length (m)	Width (mm)			Rolls per Carton	kg (Approx.)
50	100	429471	✓	12	4
20	100	465546	✓	18	5.3

Estimating Guide: 2.1m/m². Material Pricing Group: Q1

System component details

Knauf AQUAPANEL® Joint Adhesive

Knauf AQUAPANEL® Joint Adhesive is used for wall applications to bond individual Knauf AQUAPANEL® Cement Board Indoor panels.



Cartridge size	Material No.	Ex Stock	Pallet Details	
ml			Per Pack	kg (Approx.)
290	842864	✓	20	69

Shelf Life: 12 Months. Estimating Guide: One Cartridge will cover approximately 6m². Compliance: EN 998. Material Pricing Group: Q1. Available in part pallet quantities.

Knauf AQUAPANEL® Joint Filler and Skim Coating - White

This powdered compound is for use with Knauf AQUAPANEL® Cement Board Indoor as either a skim coat or joint filler. When using as a skim coat Knauf AQUAPANEL® Reinforcing Mesh must be embedded.



Bag Size	Material No.	Ex Stock	Pallet Details	
kg			Bags	Tonnes (Approx.)
20	131095	✓	48	0.96

Shelf Life: 12 Months. Estimating Guide: 4.2kg/m² for full surface skim. Compliance: EN 998. Material Pricing Group: Q1. Available in part pallet quantities.

Knauf AQUAPANEL® Reinforcing Mesh

This is a 1m wide, alkaline-resistant glass fabric mesh designed for complete cover reinforcement of Knauf AQUAPANEL® Exterior Basecoat as part of the Knauf AQUAPANEL® Exterior system, or for use internally with Knauf AQUAPANEL® Joint Filler and Skim Coat – White.



Roll Size		Material No.	Ex Stock	Pallet Details	
Length (m)	Width (mm)			Rolls per Pallet	kg (Approx.)
50	1	770764	✗	33	375

Estimating Guide: 1.1m/m². Material Pricing Group: Q1. Available in part pallet quantities.

Knauf Interior Skim

Ready-mixed water-resistant skim coat for use over Knauf AQUAPANEL® Interior wall and Knauf AQUAPANEL® Ceiling systems to create a smooth and level finished surface, ready for painting.



Bag Size	Material No.	Ex Stock	Pallet Details	
kg			Bags	Tonnes (Approx.)
25	258278	✓	40	1.0

Shelf life: 9 months. Estimating Guide: Coverage 18m² per bag at 0.8mm thickness. Material Pricing Group: Q1. Available in part pallet quantities.

Knauf AQUAPANEL® Board Primer

Pre-mixed synthetic dispersion for priming Knauf AQUAPANEL® Cement Board Indoor after jointing and filling.



Tub Size	Material No.	Ex Stock	Pallet Details	
kg			Tubs	Tonnes (Approx.)
15	49279	✗	24	0.36

Shelf life: 18 months. Estimating Guide: Coverage 40-60g/m², 1:2 dilution ratio with water. Material Pricing Group: Q1. Available in part pallet quantities.

Installation



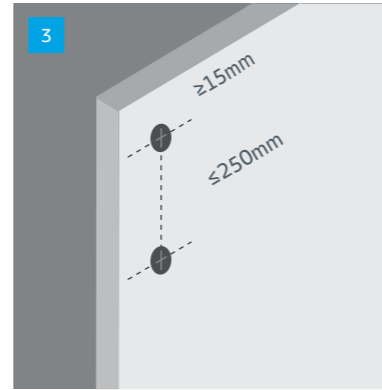
Step 1. Cutting

Boards can easily be scored and snapped. Score one side with a sharp knife, cutting through the mesh. Snap the board along the score, then cut through the mesh on the other side. Smooth any rough areas caused by scoring with a rasp. Alternatively, Knauf AQUAPANEL® Cement Board Indoor is easily and accurately cut using a coarse bladed saw.



Step 2. Create substructure and align the board

For the best results, Knauf recommend the use of lightweight Knauf Acoustic 'C' Studs. Using Knauf metal studs ensures accuracy and they will not move or twist due to shrinkage or water ingress. When boards installed vertically, studs at either 450mm centres or 600mm max. (refer to boards size). When boards installed horizontally, studs at 600mm centres max. Align the first Knauf AQUAPANEL® Cement Board Indoor panel along the profiles using a spirit level. The boards should be orientated so that the AQUAPANEL® logo is visible on the outer face.

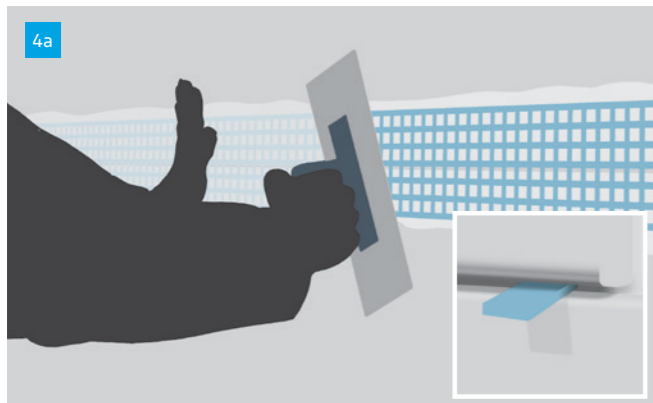


Step 3. Fastening with screws

Fasten Knauf AQUAPANEL® Cement Board Indoor panels to the framework with Knauf AQUAPANEL® Maxi Screws (SN). First fasten the screws into the centre of the cement boards, then work towards the ends and the edges. During installation, make sure the cement boards are resting on the framework. Screw spacing ≤250mm. Distance from corner and edge ≥15mm.

Step 4. – Jointing boards

There are two options for jointing AQUAPANEL® Cement Board Indoor, depending on the scale of the project and the desired finish. These two options are shown below.



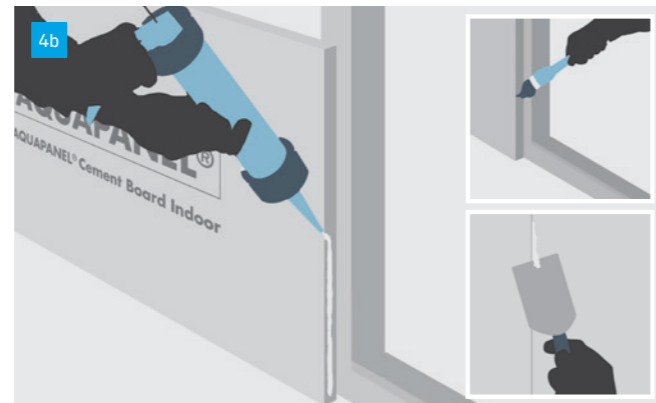
Joint treatment with Knauf AQUAPANEL® Joint Filler and Skim Coating white, and tape

This method can be used when the desired finish is either a skim coat or tiling.

Leaving a gap of 3–5mm between boards, affix all of the boards using the instructions in Step 3.

Fill the joints using Knauf AQUAPANEL® Joint Filler and Skim Coating – White and embed Knauf AQUAPANEL® Tape, centred, over all joints. The tape should be overlapped by 100mm. Apply a thin layer of Knauf AQUAPANEL® Joint Filler and Skim Coating – White to cover the tape.

Expansion joints should be at maximum 15m intervals.



Joint treatment with Knauf AQUAPANEL® Joint Adhesive

This method can be used when the desired finish is tiling. There are time savings by using this method, as well as it being a cleaner and simpler method.

In order to ensure good adhesion with Knauf AQUAPANEL® Joint Adhesive, clean the edges of the board using, for example, a wet brush. Apply Knauf AQUAPANEL® Joint Adhesive before the next board is placed.

Leave the adhesive to harden, after which the excess Knauf AQUAPANEL® Joint Adhesive can be scraped off (usually the next day). The joints between the walls, ceiling and floor require permanent elastic sealing in dry areas. Expansion joints should be at maximum of 7.5m intervals.

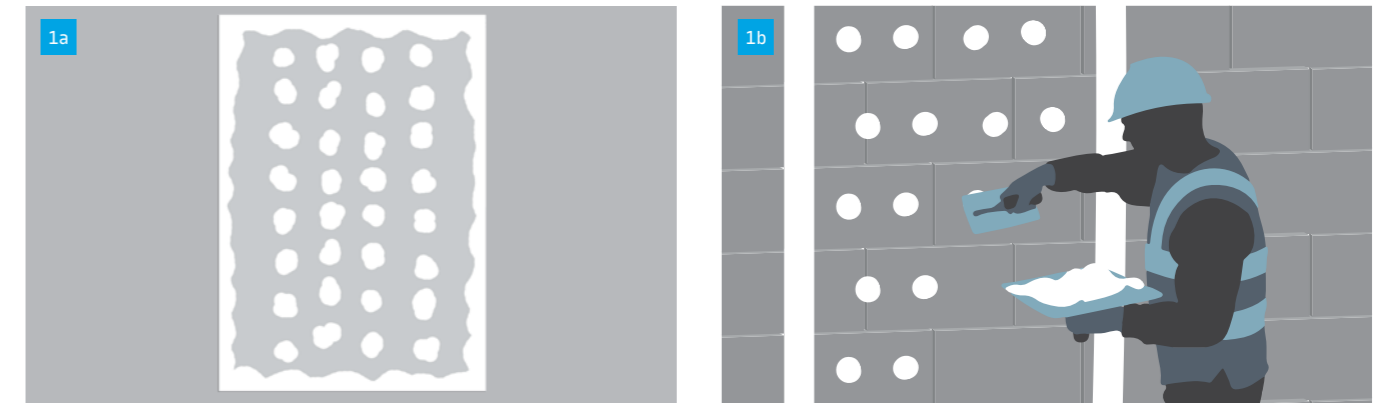
Masonry installation

Knauf AQUAPANEL® Cement Board Indoor can also be applied direct to a masonry substrate using a dot and dab method. There are instructions below for this type of installation.

Step 1.

Apply a 50–75mm wide tile adhesive strip around the board edge, then apply dabs within this border – see below sketch: 1A. Then apply dabs on the rear surface (the AQUAPANEL® print should face outwards) of AQUAPANEL® Cement Board Indoor*.

*We recommend the use of a C2 grade tile adhesive for this purpose; DO NOT use a gypsum based adhesive.



Alternatively you can apply the tile adhesive perimeter strip and dabs directly to the wall. To do this you need to mark the wall, for example with a chalk line, along the board edges. Board cut-offs should be used as packing strips against which to rest the bottom edge of the board. Position the reverse side of the board against the wall. Tap along the board sides and surface firmly until the board is aligned and levelled. Repeat the process with the next board and leaving 3–5mm gap between all board joints.



Step 2.

When the adhesive begins to dry (after 1–2 hours), you should fasten the AQUAPANEL® Cement Board Indoor with 9 stainless steel screws per m² (min. 9mm diameter countersunk head steel screws with 6mm diameter core, length to suit – screws supplied by others) along the edges and the middle using wall plugs. Ensure distance from corner and edge ≥15mm. For this purpose you should pre-drill the board before setting the dowels. Ensure these are embedded by at least 50mm into the wall. Ensure the wall plug has a collar so it can't slip through the board while fastening.

Be careful to not over tighten fixings.



Step 3.

Fill the board joints with tile adhesive.



Step 4.

Embed the AQUAPANEL® Tape (100mm). Once completed, remove the board cut-off packing strips from the bottom edges of your board.

Installation of walls behind wood burning stoves

Your system, when it comes to hot temperatures

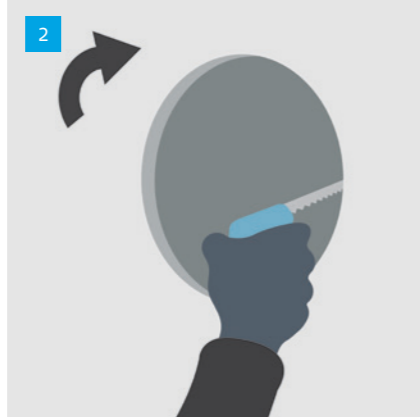
Log burning stoves require surrounding walls that can withstand high temperature and are non-combustible.

AQUAPANEL® Cement Board Indoor provides this protection as it easily withstands radiating temperatures up to 200°C and is A1 non-combustible. It is the ideal substrate for non-flammable and heat resistant surface coatings and finishes as it will not warp, shrink or expand.



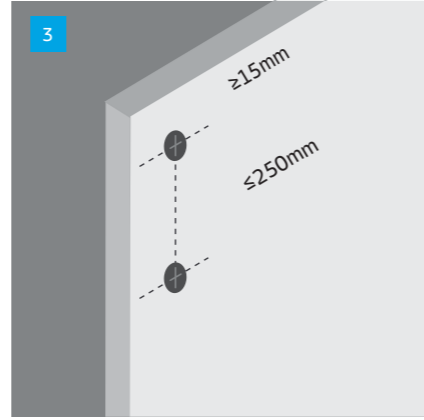
Step 1.

Boards can easily be scored and snapped. Score one side with a sharp knife, cutting through the mesh. Snap the board along the score, then cut through the mesh on the other side. Smooth any rough areas caused with a rasp.



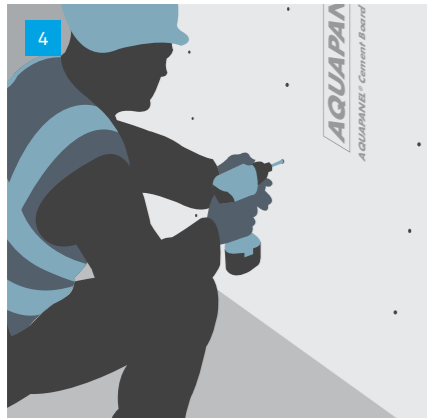
Step 2.

To make cut-outs for wiring and pipes, use a jigsaw or keyhole saw. The diameter should be approximately 10mm larger than the diameter of the pipe. The remaining gap can be closed with a cuff, suitable sealant or sealing strip.



Step 3.

Screw spacing: $\leq 250\text{mm}$
Spacing from corner and edge: $\geq 15\text{mm}$
Screws should not be overtightened. Ensure all joints between boards are staggered and leave a 3–5mm gap between boards.



Step 4.

Fasten the board to the framework using AQUAPANEL® Maxi Screws SN 25mm for metal studs or AQUAPANEL® Maxi Screws SN 39mm for timber. Apply the boards with the Aquapanel logo facing outwards.



Step 5.

All joints should be filled with flexible tile adhesive, with AQUAPANEL® Tape (100mm) embedded into the wet adhesive.



Step 6.

Always use a quality polymer modified based flexible tile adhesive, following the manufacturer's instructions.



Tiling

When using tiles weighing over 50kg/m², Knauf AQUAPANEL® Cement Board Indoor must be primed before tiling, using Knauf AQUAPANEL® Board Primer (primer/water 1:2) and specific build ups may be required.

For ceramic tile coverings, (tile dimensions $\leq 600\text{mm} \times 600\text{mm}$), use a flexible adhesive when placing tiles. The tile adhesive must, as a minimum, meet the requirements of class C2 according to BS EN 12004-1:2017.

Tile weight: up to 120kg/m²*

*specific build-up applies, refer to page 16 for additional details.



Skim Coating

Skim coating with Knauf Interior Skim

Knauf AQUAPANEL® Cement Board Indoor can also be prepared for painting by applying Knauf Interior Skim (spray or

hand-applied). Apply Knauf Interior Skim to a 1.5–2mm thickness, level out with a spatula and allow to dry. If required, sand any high spots from the first coat within 24 hours of application. Repeat if necessary to obtain a level surface. Apply a second coat of Knauf Interior Skim, smooth out, and leave to dry.

If necessary, repeat with additional coats to achieve a consistent finish. Sand the surface with a 120 grit sand paper (when using a drywall sander, a finer grade paper is recommended, varying from 180–230 grit dependent on machine used) for a superior finish, then paint.

Skim coating with Knauf AQUAPANEL® Joint Filler and Skim Coating – white

Apply Knauf AQUAPANEL® Joint Filler & Skim Coating – White with a stainless steel notched trowel to a thickness of 4mm. Embed Knauf AQUAPANEL® Reinforcing Mesh over the whole area (leaving an overlap of approximately 100mm at joints in the mesh) and level out.

At openings, additional mesh is required – this will consist of an extra layer of reinforcement mesh, creating stress patches. Mesh sections measuring 250mm x 250mm are positioned at 45° to the corners of the openings. Leave to dry for 24 hours.

Working time for hand application is approximately 16–20 minutes per m². The material begins to harden approximately 45 minutes after mixing.

To achieve a surface suitable for painting, skim over the first coat after hardening with a further 2–3mm of Knauf AQUAPANEL® Joint Filler & Skim Coating – White. As the product begins to harden, work the surface with a smoothing float spatula or trowel, if necessary using a sponge float. Leave to dry for 24 hours. If sanding is required use 180grit sand paper taking care not to scratch the surface.

Do not apply a gypsum based skim to Knauf AQUAPANEL® Cement Board Indoor.



Painting

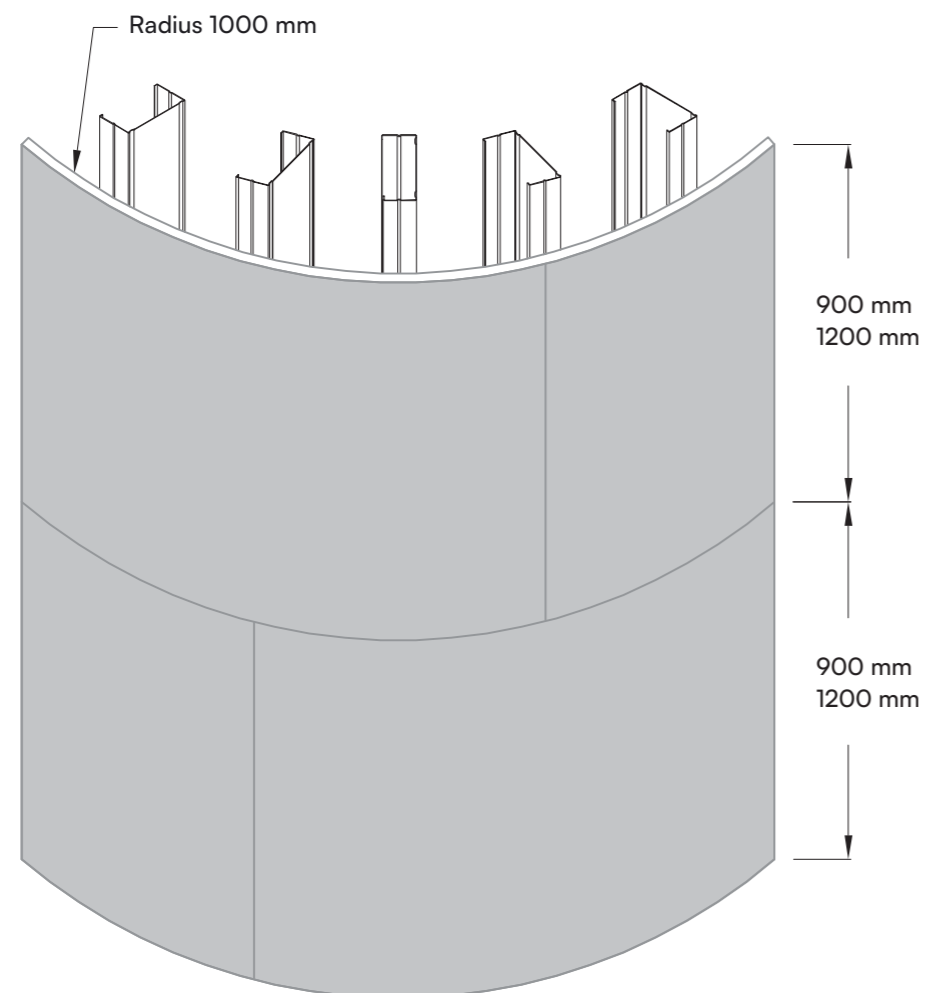
Depending on the intended use and requirements, water-based emulsion paints, silicate emulsion paints or latex paints can be used. Paint by others.

Note: If within a splash zone of a pool or shower the tiled section of the wall should be > 50% of the total height of the wall. Skimmed wall in a pool or a high humid area not near a splash zone can be skimmed and painted to full height.

Not suitable for areas subject to water spray.

Building a curved wall

When creating curved or walled walling, Knauf AQUAPANEL® Cement Board Indoor can be used. Cut the Knauf Acoustic 'C' Stud using metal shears. Fit the stud to the desired radius. Before installation, bend the cement board panel. The fine cracks that occur on the board surface will not cause any loss of performance. Max. stud spacing ≤ 300mm (external radius).



Knauf U Channel snipped and bent to suit radius

Note: Knauf AQUAPANEL® Cement Board Indoor should be curved when dry before installation. Knauf AQUAPANEL® Cement Board Indoor can be used to create concave and convex curves. Small cracks may appear on the surface of the board during shaping. This does not represent any loss of strength or function. Maintain screw centre discipline of max. 250mm centres.

Technical product information

Material consumption		
Material requirement	Unit	Per m ²
AQUAPANEL® Cement Board Indoor	m ²	1
AQUAPANEL® Maxi Screw (SN, SB)	pieces	15 (stud spacing 600mm) 20 (studs spacing 450mm)
AQUAPANEL® Joint Adhesive	ml	50
AQUAPANEL® Tape	m	2.1
AQUAPANEL® Joint Filler and Skim	kg/m ²	0.7 (used for jointing) 4.2 (used for skimming – 6mm thickness)
AQUAPANEL® Interior Skim	kg/m ²	2.59kg/m ² (1.5mm thickness)

Physical properties			
Length (mm)	1200	2400	2400
Width (mm)	900	900	1200
Thickness (mm)	12.5	12.5	12.5
Min. bending radius for 900/1200mm wide board	1	1	1
Weight (kg/m ²)	Approx.11	Approx.11	Approx.11
Dry bulk density (kg/m ³) according to EN 12467	Approx.750	Approx.750	Approx.750
Bending strength (MPa) according to EN 12467	≥7	≥7	≥7
pH-value	12	12	12
Building material class according to EN 13501	A1 non-combustible	A1 non-combustible	A1 non-combustible

Technical product information

Knauf Aquapanel® Cement Board Indoor can carry tiles weighing up to 120kg/m²

Knauf AQUAPANEL® Cement Board Indoor can carry tiles weighing up to 50 kg/m² following the standard installation method and a maximum stud spacing of 400mm or 600mm is sufficient. For heavier tiles, weighing up to 120kg/m², additional measures should be taken: the stud spacing should be a maximum of 300mm, the wall height shouldn't exceed 3m, and the tiles should stand directly on the floor or on a load-bearing support.

A decoupling membrane should be used behind the tiles, and the boards should be primed with AQUAPANEL® Board Primer beforehand.

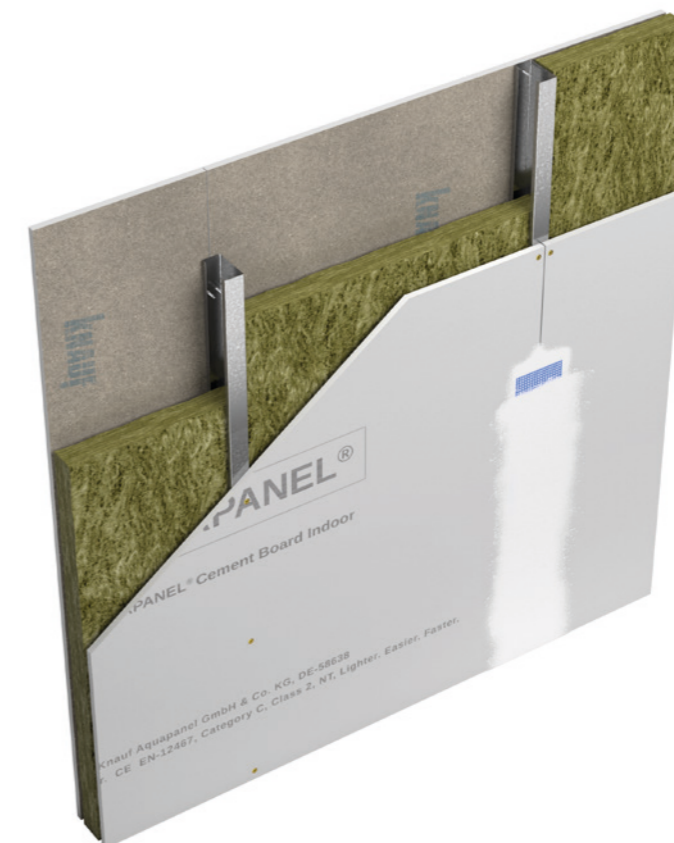
Knauf AQUAPANEL® Cement Board Indoor (according to DIN EN-12467)				
Max. weight in kg/m ²	Max. stud spacing in mm	Max tile sizes in mm	Wall height in mm	Fixing requirements to wall
50	400/600	≤ 600 x 600	According to specification	Directly on the wall without a load-bearing support
120	300	≤ 600 x 600	3,000	Directly on the floor or on a load-bearing support

Contact Knauf Technical via email: technical-uk@knauf.com for further information on installation of larger tiles in excess 600mm x 600mm

Knauf AQUAPANEL® Interior System

For more information on Knauf system performances, please contact our Technical Services via WebChat at www.knauf.com, email: technical-uk@knauf.com or call 0800 521050 (option 2).

System Arrangement					System Performance with Knauf Insulation Acoustic Roll					
Plasterboard Type	Knauf Stud depth and gauge (mm)	System Width (mm)	Layers to both sides of stud	Thickness (mm)	Stud centres (mm)	Knauf UK System Reference Code	Cavity Insulation (mm)	Maximum Height ^[1] (mm)	Fire Resistance Period ^[2] (minutes)	Estimated Acoustic Sound Insulation ^[3] Rw (dB)
Knauf AQUAPANEL® Indoor	70 Acoustic 'C' Stud (0.60)	97	1	12.5	600	P-AC-70-1x12.5-AQP-25	25	3000	30	42



AQUAPANEL® Cement Board Floor Tile Underlay

The ideal substrate for tiles on wooden subfloor



Benefits

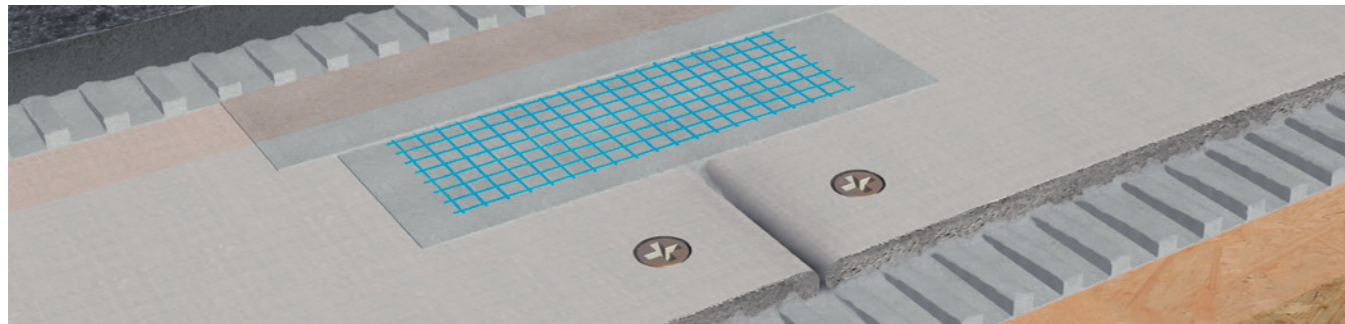
- Thickness of only 6mm allowing for increased room height
- Can be installed over existing wooden subfloors
- Will not deteriorate in water
- Resistant to mould
- Easy to score and snap
- No pre-drilling required
- Only 9 screws per board necessary



Your big helper in floor renovation projects

Classy kitchen floors with large-size natural stone tiles or comprehensive bathroom refurbishments can also be done on old wooden subfloors. AQUAPANEL® Cement Board Floor Tile Underlay is a light, highly stable dry floor panel, perfectly suited for ceramic, mosaic or natural stone. As part of the AQUAPANEL® Cement Board range, it is unaffected by water and resistant to mould and thus an ideal solution for wet and humid areas. And its thickness of only 6mm makes low floor heights possible as well.

The ideal substrate for tiles on wooden subfloor



Application table - Timber or steel joists

Joist Centres	400mm	600mm	800mm
OSB 3 subfloor thickness acc. to EN 300	18mm	18mm	22mm
Chipboard cat. P5 subfloor thickness acc. to EN 312	19mm	22mm	-

Deflection limits: *L/300 bearing wooden/steel framework*
L/400 wooden subfloor (OSB or chipboard)

Minimum subfloor thickness dependent on centre distance of wooden joists.

Specifications of AQUAPANEL® Cement Board Floor Tile Underlay

Length (mm)	1200
Width (mm)	900
Thickness (mm)	6.0
Weight per unit area (kg/m ²)	approx. 8.5
Dry density (kg/m ³)	approx. 1250
Building material class according to EN 13501	A1 non-combustible

From board to fitting accessories

With AQUAPANEL® Cement Board Floor Tile Underlay you have a complete system solution for your tiling project. You benefit from one-stop shopping and an ensured compatibility of all components and accessories.

When working with wooden subfloors we recommend our system screws for fixing boards on timber, as well as our AQUAPANEL® Tape (10m) to effectively reinforce all floor joints.



AQUAPANEL® Cement Board Floor Tile Underlay

- Aggregated Portland cement board
- Coated glass fibre mesh embedded in back and front surfaces
- Square cut ends with reinforced and smoothly finished edges (EasyEdge™)



AQUAPANEL® Maxi Screw SN25

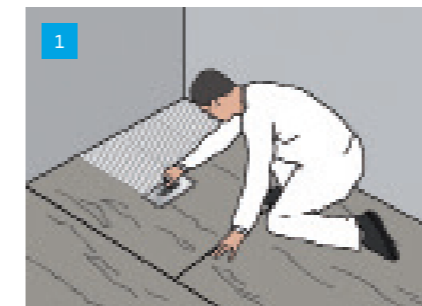
- Specially suited for fixing boards onto wooden subfloors
- Special corrosion-proof coating



AQUAPANEL® Tape (10cm)

- Glass fabric joint tape with alkali-resistant coating
- Used to reinforce joints in floors and walls in interior areas
- Coverage of approx. 2.1 m/m²
- Width: 100mm, Length: 20m

Floor Installation – 6 easy steps to installation

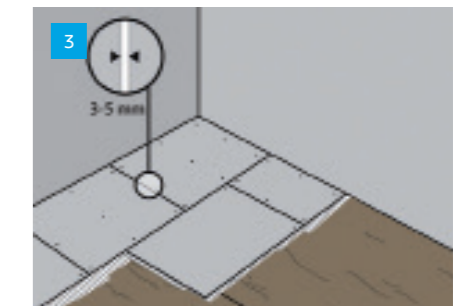


Apply a complete bed of flexible tile adhesive (class C2/S1 acc. EN 12004/12002) to the subfloor, in accordance with manufacturers' guidelines.

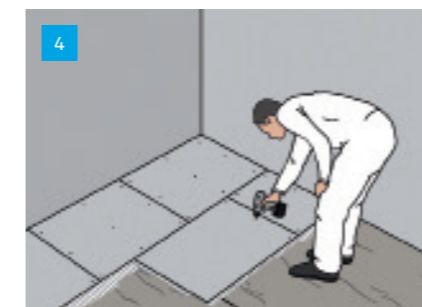
Wooden subfloor must be primed before applying AQUAPANEL® Cement Board Floor Tile Underlay.



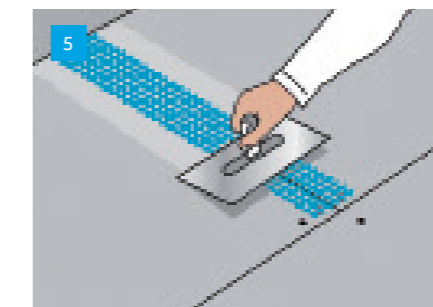
Lay AQUAPANEL® Cement Board Floor Tile Underlay, starting in the corner farthest from the door. Joints between boards and the subfloor should be staggering (minimum 200mm). No two joints should coincide.



Leave a gap of 3 - 5 mm between each board and screw AQUAPANEL® Cement Board Floor Tile Underlay to the subfloor using AQUAPANEL® Maxi Screws SN 25.



Nine screws per board evenly distributed with a minimum distance from the board edge of 15mm.



Fill all the joints with flexible tile adhesive (class C2/S1 acc. EN 12004/12002), then embed AQUAPANEL® Tape (10cm). Allow for the adhesive in the joints to dry.



Ready to lay tiles: Apply a complete bed of flexible tile adhesive (class C2/S1 acc. EN 12004/12002), in accordance with manufacturers' guidelines.



Case Study March 2020

The Wave, Coventry

Project outline: UK's newest indoor waterpark, consisting of three floors filled with exciting state-of-the-art attractions.

Value: £25m

Architect: Faulkner Browns

Main Contractor: Buckingham Group

Subcontractor: Miles Industries

Products: Knauf AQUAPANEL® Cement Board Indoor, Knauf AQUAPANEL® Joint Adhesive and Knauf AQUAPANEL® Maxi Screws (SN)

Summary: Buckingham Group has specified Knauf AQUAPANEL® Cement Board Indoor on the lively, fun interior of a new £25m indoor waterpark in Coventry.



Buckingham Group has specified Knauf AQUAPANEL® Cement Board Indoor on the lively, fun interior of The Wave, a new £25m indoor waterpark in Coventry.

Knauf AQUAPANEL® Cement Board Indoor is a weight-optimised, flexible cement board which is unaffected by water and resistant to mould, and ideal for challenging wet and humid interior conditions. Installed on the waterpark walls, along with Knauf AQUAPANEL® Joint Adhesive and AQUAPANEL® Maxi Screws, the system solution provides a secure moisture barrier and robust substrate for tiling.

Knauf offers fully tested and certified interior and exterior systems which offer a single source of supply and complete peace of mind for clients, specifiers and contractors. The systems have been developed as complete drywall constructions in accordance with recognised standards and ensure complete system performance when installed according to Knauf guidelines and these standards.

Beyond the impact and water-resistant characteristics, a key reason for specifying AQUAPANEL® in this project is its flexibility. The boards are malleable and can be curved to a radius of 1 metre, which enabled the flowing curves required in the interior design of the waterpark.

Furthermore, it is quick and easy to install, and it can be cut by scoring with a knife and then simply snapping, as with plasterboard.

As The Wave is a main attraction for kids, creating a fun and captivating space was essential whilst ensuring durability of the design.

Mark Lee, Director of Miles Industries, said "This project presented some technical challenges, particularly

"We looked at AQUAPANEL® as a solution to perform in the pool environment and provide a process enabling us to complete areas within the very tight timescale."

Mark Lee, Director of Miles Industries

regarding the interface with steelwork and other waterproofing details. It was apparent that a traditional interior board system would not work in all areas. We were asked to look at putting forward a system that would provide a suitable substrate for the tiling finish.

We looked at AQUAPANEL® as a solution to perform in the pool environment and provide a process enabling us to complete areas within the very tight timescale.

In some cases, we were installing the products on curved surfaces 3 lifts high. Again, the time saved in installing in these areas proved very useful."

The Wave, Coventry is the UK's newest indoor waterpark, consisting of three floors filled with exciting state-of-the-art attractions. The first floor is The Wave itself, including six exhilarating slides, a wave pool, the lazy river and a toddler splash zone.

The second and third floors, Lifestyles area and Mana Spa respectively, are more orientated for adult's leisure time, including a health & fitness centre, a 25m pool and a spa with an aromatic room, herbal steam room and a sauna.

Need more information on Knauf AQUAPANEL® range?

Discover a world of online resources and support available 24/7 to help you understand and communicate the full scope of the AQUAPANEL® family. Find and download in-depth technical documents, films and the latest materials, always up to date.

See AQUAPANEL® in action

Our YouTube channel features product introductions and how-to videos on everything from installation to finishing options and curved wall constructions. It's all available any time – and we'll be regularly updating the channel with our latest videos, making it the first place to go for new AQUAPANEL® content.

For more information visit:

- knauf.com/en-GB/knauf-gypsum/products-systems/aquapanel-technology
- Knauf.com
- Search for **Knauf AQUAPANEL®** channel on YouTube



CITB Accredited Training Organisation



The Learning Zones at Immingham and Sittingbourne are CITB approved training facilities and offer various courses for the construction industry. We believe in future-proofing and protecting the workforce.

We provide the best possible training on the large variety of systems and products that we supply, and make our courses widely available to those who request them. Whether the trainees are already skilled tradespeople, wishing to add to their existing knowledge, or people with no previous experience, there is a course in our range to benefit all.

We are happy to advise on the suitability of different courses and the content can be adapted to suit the requirements of the delegates.

All work carried out on the Knauf courses will be in a simulated site environment, and to industry standards, using British Standard and European Codes of Practice for accuracy and finish.

Contact us to find out more about the latest courses available.

Courses available

Drylining – Direct bonding and metal lining systems

Fire protection – Encasement systems

General overview of interior products and systems

Metal stud partitions, shaft wall, wall linings

Metal suspended ceiling systems

Flooring – Brio and GIFA systems

Façades – Steel framing systems

Taping and jointing

AQUAPANEL® Indoor and Outdoor

Demountable ceiling systems

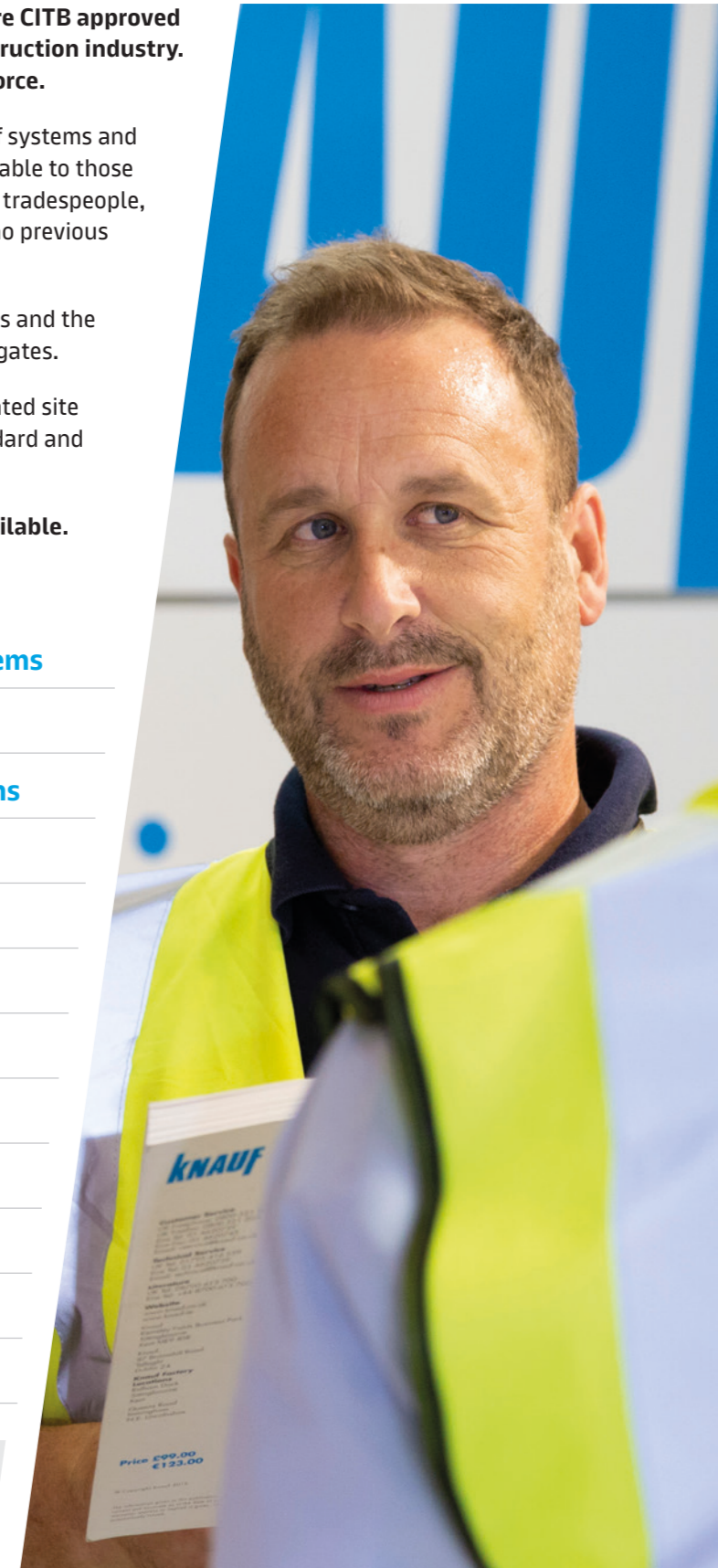
Drywall for site managers / Quality Control

Airless spray finishing

Telephone: **01795 424499**

Email: knauftraining@knauf.com

Website: www.knauf.com



Look to the future – Build on us

We recognise the importance of the buildings in which we all live, work and relax.

We spend 90% of our lives inside buildings, so it is of the utmost importance that the homes we live in, the hospitals where we care for our sick, the schools in which we educate our children and the offices in which business operates are world class, safe, comfortable, sustainable and enjoyable.

The extensive portfolio of products and systems from Knauf UK & Ireland is developed to support that vision.

As a business, we look to the future; building on the knowledge we have acquired with a planned programme of research and development to make sure we continue to keep ahead of current thinking.

Looking to the future also means that our business must be sustainable. We are always conscious of the wider consequences of our actions, both today and tomorrow.

In terms of our operation we work hard to minimise our impact on the environment and are proud of our recycling, waste reduction and energy efficiency initiatives.



Healthcare



Education



Residential



Commercial

AQUAPANEL® complete system solutions



Knauf AQUAPANEL®
Cement Board Outdoor
Brochure



Knauf AQUAPANEL®
Interior Ceiling System
Brochure



Knauf AQUAPANEL®
Exterior Ceiling System
Brochure



Customer Service

UK: 0800 521 050
Eire: 01 4620739
cservice@knauf.com

Technical Service

0800 521 050 (Option 2)
technical-uk@knauf.com

Social Media

 KnaufUK

 KnaufUK

 Knauf UK & Ireland

 @Knauf_UK

Addresses

Knauf
Kemsley Fields Business Park
Sittingbourne
Kent
ME9 8SR

Knauf
87 Broomhill Road
Tallaght
Dublin 24
D24 WR85

Website

www.knauf.com