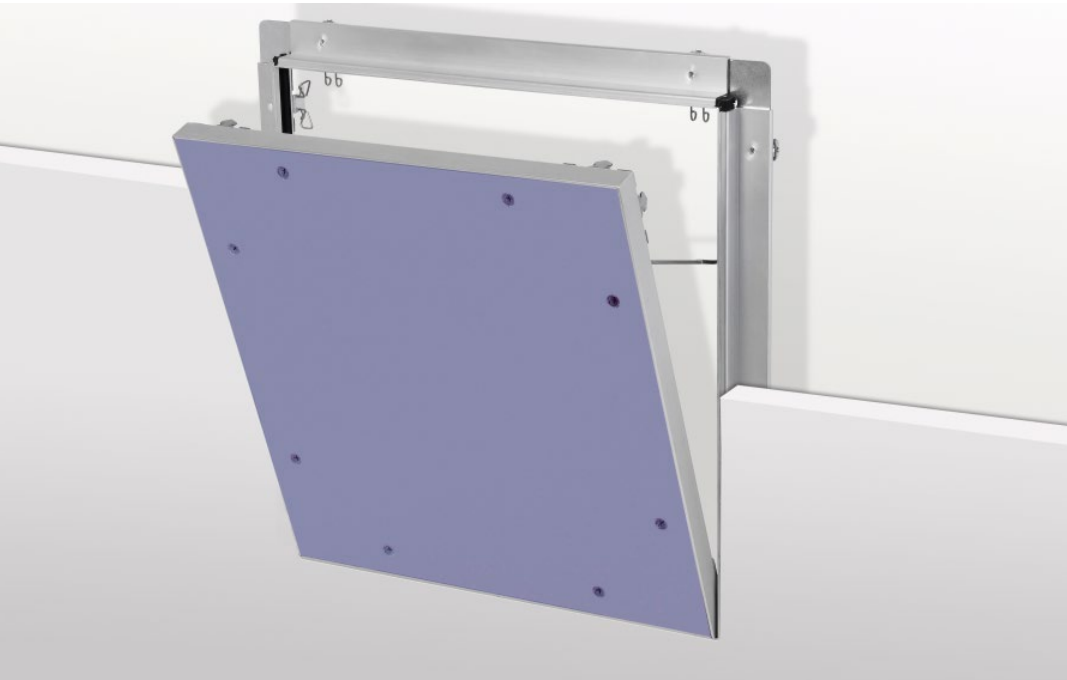


Note on English translation / Hinweise zur englischen Fassung

This is a translation of the technical data sheet valid in Germany.

All stated details and properties are in compliance with the regulations of the German standards and building regulations. They are only applicable for the specified products, system components, application rules, and construction details in connection with the specifications of the respective certificates and approvals.

Knauf Gips KG denies any liability for applications outside of Germany as this requires changes acc. to the respective national standards and building regulations.



Drywall Systems

E125a.de

Product Data Sheet

2019-10

REVO BS30 Wand 12.5

Access panel for Knauf partition systems with fire resistance

Product description

REVO BS30 Wand 12.5 is an access panel consisting of:

- Anodised aluminium outer frame
- Openable and fully detachable hatch
- Flush screw fastened Diamant board (hard gypsum board) ex-works
- Seal

Properties and added value

- Can be used for cladding thickness 12.5 mm
- Can be tiled

Field of application

Installation on Knauf partition systems with half an hour fire resistance (F30) with cladding thickness 12.5 mm.

System variants

Fire resistance class	Cladding per partition side		Insulation layer	
	Knauf Plano fire-resistant board	Diamant	Minimum thickness	Min. density
		mm	mm	kg/m ³
Fire protection permissible				
W111.de Metal stud partition, single metal stud frame, single-layer cladding				
F30	•	12.5	Without or	
	•	12.5	Mineral wool G	

G Mineral wool insulation layer acc. to EN 13162, non-combustible (insulating material, e.g. from Knauf Insulation)

Certificate of Usability

Fire resistance proof

■ AbP P-3310/563/07-MPA BS

Application

Trimmer

Arrange trimmers made of CW studs or UW runners in accordance with the dimensions of the access panel in the partition frame. Maintain spacings between cut-out section and trimmer profiles of at least 24 mm and a maximum of 30 mm.

See the design details and the scheme drawings on the following page.

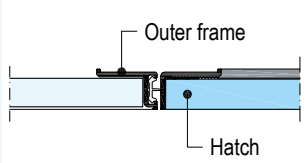
Cladding

Cut out opening in the partition cladding approx. 12 mm larger than the access panel size (= clearance). Screw fasten the partition cladding to the trimmer profiles as well.

In case of larger hatch dimensions, the installation of the outer frame must be undertaken together with the partition cladding installation (swivelling into cladding already installed is not possible).

Installation of the access panel

Cladding
12.5 mm



Place outer frame of the access panel in the opening, lay it on the cladding, align and screw attach. Use Schnellbauschrauben drywall screws TB 3.5 x 25 mm or Diamantschrauben screws XTB 3.9 x 25 mm for the attachment of the cladding to the frame. Distance between screw centres maximum 200 mm.

Subsequently insert the hatch and check the lock for proper functioning.

Jointing

Fill the outer frame of access panel and the cladding surface with Uniflott. It is not necessary to fill or skim the inner frame to surface quality Q2. Fill in the screw heads. For surface quality level Q3 scrape skim the hatch face. Clean outer frame, hatch, and in particular the seal thoroughly after filling.

Notes

With rectangular ceiling access panels, the lock and hinge system is always mounted as standard on the long side. With wall mounted access panels, the lock system is always at the top and the hinge system is always at the bottom.

A clearance of ≥ 30 mm must be ensured in the upper third of the rear side of the hatch for opening the panel.

No cladding board joints are allowed near the access panels.

Observe the installation instructions enclosed with the product.

Construct the Knauf systems in accordance with the respective Knauf System Data Sheets.

Coatings and linings

Surface treatment of the access panels with gypsum board inlays in acc. with the Knauf System Data Sheet W11.de.

Access panel designed for tiling

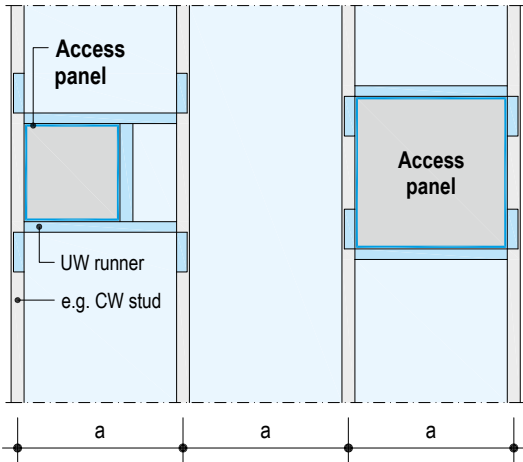
Only apply the tiles using the thin bed method (max. adhesive thickness and tile 9 mm). Fill joint between cladding and outer frame after installation of the access panel. The edge of the wall tile can be directly applied on the clearance dimension. Install seal (included).

Note for the painter

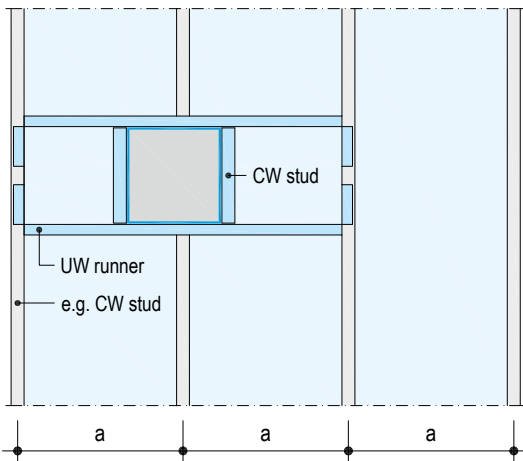
Generally remove the access panel hatch before painting separately so that no paint penetrates the narrow joint between the hatch and the outer frame. Clean any paint remnants from the frame.

Examples, scheme drawings

Stud spacing a continuous



Stud spacing a with cut stud and trimmer profiles

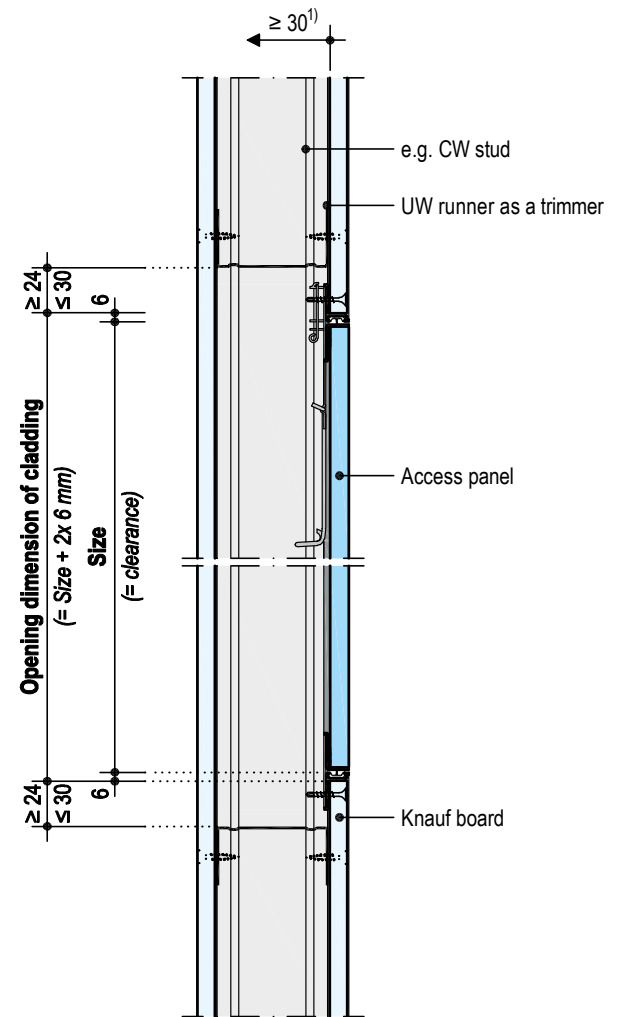


Additional grid

Design details

Scale 1:5 | Dimensions in mm

E125a.de-V1 REVO BS30 Wand 12.5 – vertical section



1) Opening displacement clearance of the access panel

Product range

Description	Dimensions mm	Weight kg/ piece	Packaging unit	Material number	EAN
REVO BS30 Wand 12.5	200 x 200	1.2	1 piece / pack	00220713	4003982232144
	300 x 300	3.0		00220714	4003982232151
	400 x 400	5.2		00220715	4003982232168
	500 x 500	7.0		00220716	4003982232175
	500 x 600	7.5		00220717	4003982232182
	Customized	–		00111924	4003982203908

Required specifications for ordering

- Dimension of the access panel (width x length)
- Additional options / special designs

Additional options / special designs

- Intermediate dimensions at least 200 x 200 mm, maximum tested dimension: 500 x 1200 mm
- Airtight and dust-proof access panel (EN 1026+12207 class 3, suction and pressure)
- Four-square bolt
- Round cylinder lock
- Lock designed for profile cylinder
- Access panel for tiling: Specify the tile dimensions (width x height), joint width, adhesive thickness, tile thickness and cladding thickness (The exact clearance is determined by the tile format)

Note

For on-site tiling

- Maximum tile thickness: 7 mm,
- Maximum area weight of the tiles: 8 kg/m²,
- Maximum dimension of the access panel with tiling: 500 x 800 mm



Videos for Knauf systems and products can be found under the following link:

www.youtube.com/knauf



The iPad App Knauf Infothek now provides all the current information and documents from Knauf Gips KG at any time and in every location in a clear and comfortable way.

[Knauf Infothek](#)

Knauf Direct

Technical Advisory Service:

▶ knauf-direkt@knauf.de

▶ www.knauf.de

Knauf Gips KG Am Bahnhof 7, 97346 Iphofen, Germany

All technical changes reserved. Only the current printed instructions are valid. The stated information represents current state-of-the-art Knauf technology. The entire state of approved engineering rules, appropriate standards, guidelines, and rules of craftsmanship are not included herewith. These and all application instructions have to be adhered to separately by the installer. Our warranty is expressly limited to our products in flawless condition. All application quantities and delivery amounts are based on empirical data that are not easily transferable to other deviating areas.

All rights reserved. All amendments, reprints and photocopies, including those of excerpts, require our expressed permission.