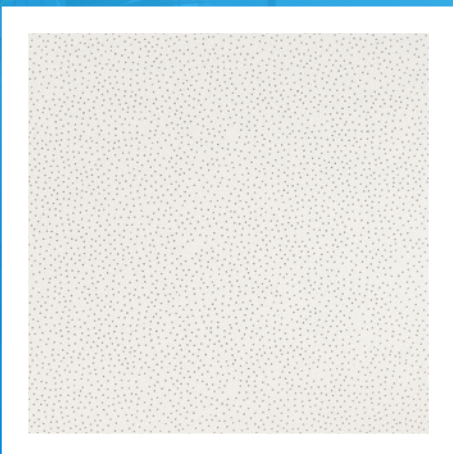
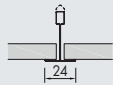










ARMSTRONG SCALA

- Armstrong SCALA features a microperforated surface pattern offering both contemporary design and good acoustical performance
- Good light reflectance (85%)



Edge details Additional edge details on request	Board 														
Thickness (mm)	12														
Dimensions (mm) Additional sizes on request	600 x 600 610 x 610														
System	Exposed demountable - System C														
Weight	2.5 - 3.1 kg / m ²														
Colour	White														
Sound absorption	EN ISO 354 $\alpha_w = 0.50$ as per EN ISO 11654 - Class D <table border="1" data-bbox="459 860 1453 936"> <thead> <tr> <th>Frequency f (Hz)</th> <th>125</th> <th>250</th> <th>500</th> <th>1000</th> <th>2000</th> <th>4000</th> </tr> </thead> <tbody> <tr> <td>α_p</td> <td>0.35</td> <td>0.35</td> <td>0.55</td> <td>0.75</td> <td>0.65</td> <td>0.60</td> </tr> </tbody> </table> NRC = 0.50 as per ASTM C 423	Frequency f (Hz)	125	250	500	1000	2000	4000	α_p	0.35	0.35	0.55	0.75	0.65	0.60
Frequency f (Hz)	125	250	500	1000	2000	4000									
α_p	0.35	0.35	0.55	0.75	0.65	0.60									
Sound attenuation	EN ISO 10848-2 $D_{n,f,w} = 31$ dB as per EN ISO 717-1 CAC = 31 dB as per ASTM E 413-10														
Fire reaction	Euroclass B-s2,d0 as per EN 13501-1 RUS KM1 (G1, V1, D1, T1) as per 123-FZ														
Light reflectance	85%														
Thermal conductivity	$\lambda = 0.060$ W/mk as per EN 12667														
Humidity resistance	70% RH														
Indoor air quality	  A+ E1														
Cleanability	 														
Sustainability	  46 - 49%														

Products may vary from country to country. Please contact your local sales representative. For further information and legal notice, please visit our website.