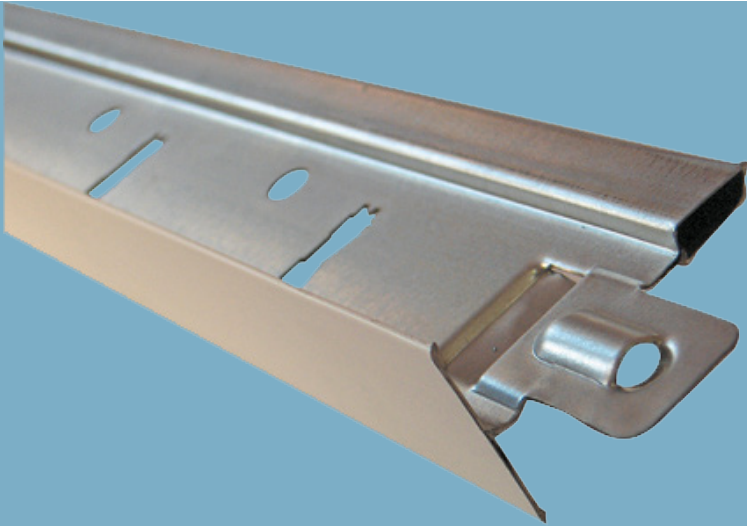


## Knauf T15 Bar

Technical Data Sheet 12/2023



# Knauf T15 Bar

## Profil

### Product Description

Components used in modular ceiling systems as main and cross tees

#### Storage

- Profiles are tied and packed on pallets.
- Direct contact with water should be avoided.
- Packages should be stored in flat, dry and clean areas.

#### Standard referred to

-

### Fields of Application

- Modular suspended ceiling systems

### Properties

- Clean and easy installation

**Technical Data**

Profile Type	Thickness (mm)	Weight (kg/m)	Width (mm)	Height (mm)	Length (mm)	Packaging (pcs./bundle)
Knauf T15 Main Tee	0.3	0,3	15	38	3600	25
Knauf T15 SecondaryTee					1200	50
Knauf T15 SecondaryTee					600	75

### System Performance Values

Performance values as sound insulation, fire resistance etc. may differ acc. to the drywall system to be applied. Please check the performance values of the drywall systems;

[Knauf Technical Website](#)  
[Document Center](#)

### Application

Application should be done acc. to the applicable standards and acc. to the Knauf Technical Brochures of the respective drywall system.

▶ 444 YAPI - 9274

▶ [www.knauf.com.tr](http://www.knauf.com.tr) / [www.teknik.knauf.com.tr](http://www.teknik.knauf.com.tr)

▶ [teknik@knauf.com](mailto:teknik@knauf.com)

Center: Knauf Moment Beştepe Office, Beştepe Mah. 32.Cadde No:1/212-218 06560 Beştepe-Yenimahalle  
/ ANKARA Tel: 0312 297 0100 Faks: 0312 266 4506