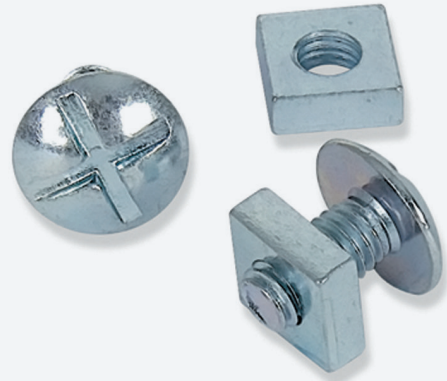




## ***Knauf MF Nut and Bolt***

Knauf MF Nut and Bolt is part of the MF ceiling system. Fixed to the soffit it connects the Knauf Angle Sections to form the frame support and suspension.

*Product-Data-Sheet*



### **Areas of Application**

Used as part of the Knauf MF Ceiling System.

### **Key Benefits**

Allows the angles to be fixed securely to the Soffit Cleat

***Build on us.***

Creation Date: 31/08/2023  
Revision Reference: 002  
Revision Date: 20/07/2024

## Technical Information

Diameter (mm)	Weight (kg per piece)	Coating type (EN 12329)	Material Number
6	0.01	Zinc	258293

## Sustainability

**Pre-Recycled Content**

13.02%

**Post-Recycled Content**

3.72%

**Recyclability**

Fully recyclable

## Storage and Handling

No temperature constraints, but salt spray and corrosive atmospheric conditions must be avoided. Must be kept in dry conditions.

## Packaging

Supplied bulk packed in fully recyclable cardboard.

## Disposal/Repair

Separate metal from any non-metal components and recycle in accordance with local authority requirements.

Applicable European Waste Catalogue codes: 12 01, 12 01 01, 12 01 02

## Health & Safety

Please refer to our Safety Data Sheet for guidance on Personal Protection Equipment required for the handling and installation of this product.

## Application / Installation

Please refer to our system installation instructions for details on how to install MF Nut and Bolt as part of a Knauf MF Ceiling system.

## Additional Documentation

[Safety Data Sheet](#)

## Certification

[Environmental Product Declaration](#)

### Product Accreditations:



### Knauf UK GmbH Company Accreditations:



The information given in this publication is believed to be current and accurate as at the date of publication, but no warranty, express or implied is given. Updates will not be automatically issued © Copyright Knauf 2024

**Customer Service**

UK Tel: 0800 521 050

Eire Tel: 01 4620739

Email: [cservice@knauf.com](mailto:cservice@knauf.com)**Technical Service**

Tel: 0800 521050 (option 2)

Email: [technical-uk@knauf.com](mailto:technical-uk@knauf.com)  
(excluding public holidays)**UK Address**

Knauf  
Kemsley Fields Business Park  
Sittingbourne  
Kent ME9 8SR

**Ireland Address**

Knauf  
87 Broomhill Road  
Tallaght  
Dublin 24  
D24 WR85

Creation Date: 31/08/2023

Revision Reference: 002

Revision Date: 20/07/2024