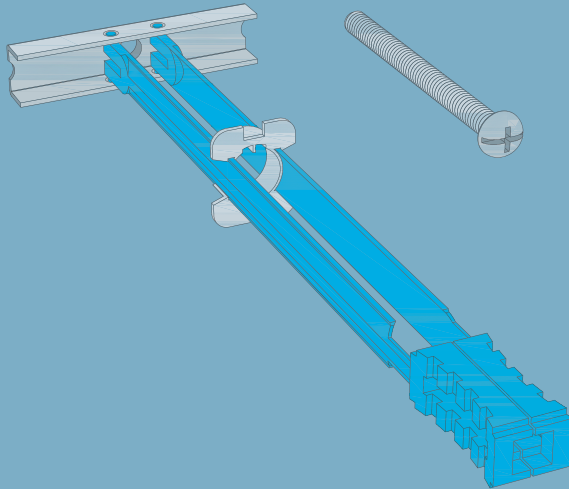


K543



Drywall and Floor Systems

2009-02

K543 Knauf Hartmut

Cavity dowel for drywall systems with a load capacity of up to 65 kg

K543 Knauf Hartmut

Cavity dowel for drywall systems with a load capacity of up to 65 kg



Product description

Hartmut is a cavity dowel consisting of metal and plastic including a suitable screw (M5x60).

Order information
50 pcs. pack material no. 00131376

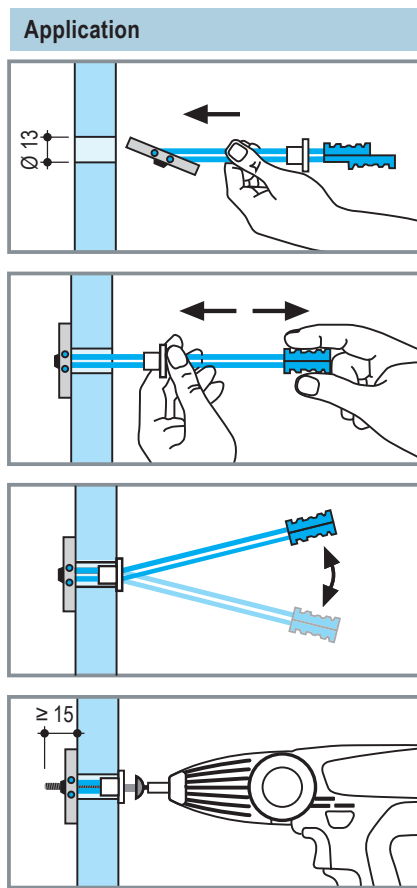
Fields of application

Fixing of loads

- on metal stud partitions and wood frame partitions with up to 65 kg per dowel
- on suspended ceilings with up to 6 kg per dowel and up to 6 kg per cladding span width and metre.

Properties

- Easy and fast application
- High application reliability
- High load bearing capacity
- Reliable durability of load bearing capacity
- For all cladding thicknesses
- Variable application due to the attachment clips with click function



All dimension in mm

Technical Data

Cladding thickness t mm	Load bearing capacity per dowel (tension and shear load) in drywall partitions	
	Knauf boards kg	Diamant kg
10	-	25
12.5	35	40
15 / 18	40	45
2x 10 / 20	45	55
2x 12.5 / 25	55	60
≥ 2x 15	60	65

Maximum thickness of the item to be fixed

Length of screw	60 mm
minus cladding thickness	- d (mm)
minus anchoring length	- 15 mm
	<u>..... mm</u>

A longer screw M5 can be used if necessary (not included).

Knauf LLC	Knauf Drywall Systems	

All technical changes reserved. Only the current printed instructions are valid. Our warranty is expressly limited to our products in flawless condition. All application quantities and delivery amounts are based on empirical data that are not easily transferable to other deviating areas. The stated information represents current state-of-the-art Knauf technology. The entire state of approved engineering rules, appropriate standards, guidelines, and rules of craftsmanship are not included herewith. These and all application instructions have to be adhered to separately by the installer. All rights reserved. All amendments, reprints and photocopies, including those of excerpts, require the express permission of Knauf Gips KG, Am Bahnhof 7, 97346 Iphofen, Germany. Delivery via professional building material distributors only, in accordance with our current business, delivery and payment terms.

www.knauf.ae

The constructional and structural properties, and characteristic building physics of Knauf systems can solely be ensured with the exclusive use of Knauf system components, or other products expressly recommended by Knauf.