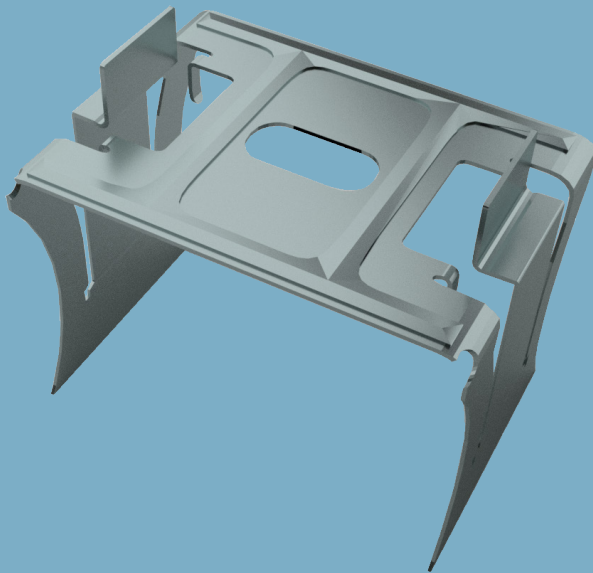


Channel Intersection Connector (Double)

Technical Data Sheet 12/2023



Channel Intersection Connector (Double)

Connector element

Product Description

Components used for connecting the main and furring ceiling C channels in one step.

Storage

- Direct contact with water should be avoided.
- Packages should be stored in flat, dry and clean areas.

Standards referred to

-

Fields of Application

- Suspended Ceiling Systems

Properties

- Clean and easy installation.

Channel Intersection Connector (Double)

Connector element



Technical Data

| Description | Thickness (mm) | Weight (kg/pcs.) | Packaging Unit (pcs./pallet) | Standard | Material Number |
|---|----------------|------------------|------------------------------|----------|-----------------|
| Channel Intersection Connector - TC 60 / 27 | 0,9 | 0,08 | 100 | - | 149247 |
| Channel Intersection Connector - TC 50 / 40 | | 0,07 | | | 271529 |

System Performance Values

Performance values as sound insulation, fire resistance etc. may differ acc. to the drywall system to be applied. Please check the performance values of the drywall systems;

[Knauf Technical Website](#)
[Document Center](#)

Application

Application should be done acc. to the applicable standards (TS 1475) and acc. to the Knauf Technical Brochures of the respective drywall system.

▶ 444 YAPI - 9274

▶ www.knauf.com.tr / www.teknik.knauf.com.tr

▶ teknik@knauf.com

Center: Knauf Moment Beştepe Office, Beştepe Mah. 32.Cadde No:1/212-218 06560 Beştepe-Yenimahalle / ANKARA Tel: 0312 297 0100 Faks: 0312 266 4506