

Note on English translation / Hinweise zur englischen Fassung

This is a translation of the product data sheet valid in Germany.

All stated details and properties are in compliance with the regulations of the German standards and building regulations. They are only applicable for the specified products, system components, application rules, and construction details in connection with the specifications of the respective certificates and approvals.

Knauf Gips KG denies any liability for applications outside of Germany as this requires changes acc. to the respective national standards and building regulations.

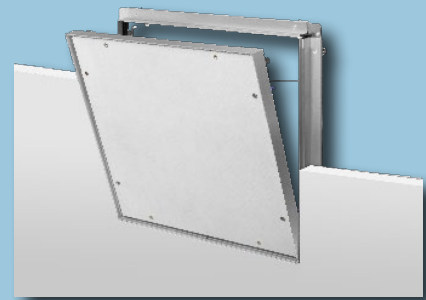


Drywall Systems

E113b.de

Product Data Sheet

2023-12



AQUAPANEL® REVO 12.5 MSK

Access panel for AQUAPANEL® wall constructions in interiors

Product description

Access panel for installation in walls (drywall partition and furring) and in suspended ceilings, without building physics requirements.

AQUAPANEL® REVO 12.5 MSK consisting of:

- Aluminium outer frame
- Openable and fully detachable hatch
- Screw fastened AQUAPANEL® Cement Board Indoor Lighter.Easier. Faster. with skimming edge (MSK) ex-works
- Seal

Properties and added value

- Wet room access panel for wall and ceiling built-ins
- Airtight and dust-proof access panel class 3, EN 1026 + 12207, suction and pressure (tested airtight up to 600 Pascals, over or under pressure)
- Water action classes W0-I to W1-I acc. to DIN 18534-1
- Corrosivity category C3
- With skimming edge (MSK)
- All-purpose use for cladding thickness 12.5 mm
- Retrofitting is possible

Field of application

Installation in Knauf AQUAPANEL® partition and ceiling systems with cladding thickness of 12.5 mm in damp and wet rooms.

Application

It can be installed together with the substructure/grid or when the cladding is applied. Trimmers made of profiles may be necessary depending on the construction type and installation conditions of the access panels.

Trimmer

Arrange trimmers made of corrosion protected CD or CW studs/UW runners in accordance with the dimension of the access panel. Maintain distances between cut-out section and trimmer of 30 mm (with ceiling installation at least 60 mm along the furring channel with UD profile) up to a maximum of 100 mm. Mount 4 additional suspenders in the corner areas of the access panel when mounting in ceilings.

See the design details and the scheme drawings on the following page.

Cladding

Cut out opening in the ceiling/partition cladding approx. 12 mm larger than the access panel size (= clearance).

Screw fasten the cladding to the trimmer profiles as well.

If the distance to the installations in the ceiling is less than 200 mm, or for partitions the outer frame must be installed with the surface cladding (swivelling into the cladding already installed not possible).

Retrofitting

The cladding must be sawed out in case of subsequent installation of the access panel. Apply a frame backing made of corrosion protected circumferential profile sections (CD channels or CW studs/UW profiles) and attach them with screws (screw spacing ≤ 150 mm).

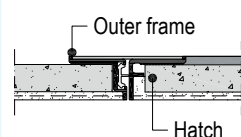
Note

The cut edges of the C3 profiles or small parts must always be recoated. We recommend the grey Drystar corrosion protection lacquer C3/C5M. On-site, it will be immediately recognizable if all the required subsequent work has been carried out.

Installation of the access panel

Cladding

12.5 mm



Place outer frame of the access panel in the opening, lay it on the cladding, align and screw attach. Subsequently, insert the hatch and check the lock for proper functioning.

With wall access panels, a clearance of ≥ 30 mm must be ensured in the upper third of the rear side of the hatch for opening the panel.

Use AQUAPANEL® Maxi Screws SB for the attachment of the frame to the cladding.

Jointing

Fill outer frame of access panel and the surface cladding with AQUAPANEL® Fugen und Flächenspachtel – weiß joint filler & skim coating – white. Fill in the hatch as well.

See also Knauf system data sheets for the respective system.

Cleaning

Clean outer frame, hatch, and particularly the seal thoroughly after filling.

Notes

With rectangular ceiling access panels, the lock and hinge system is always mounted as standard on the long side. With wall mounted access panels, the lock system is always at the top and the hinge system is always at the bottom.

At least

- 2 screws per frame side for hatch size $< 500 \times 500$ mm
- 3 or 4 screws for hatch size $\geq 500 \times 500$ mm
Screw spacing maximum 500 mm.

No cladding board joints are allowed near the access panels.

Observe the installation instructions enclosed with the product.

Apply the ceiling, wall and furring systems in accordance with the respective most current Knauf system data sheets.

Coatings and linings

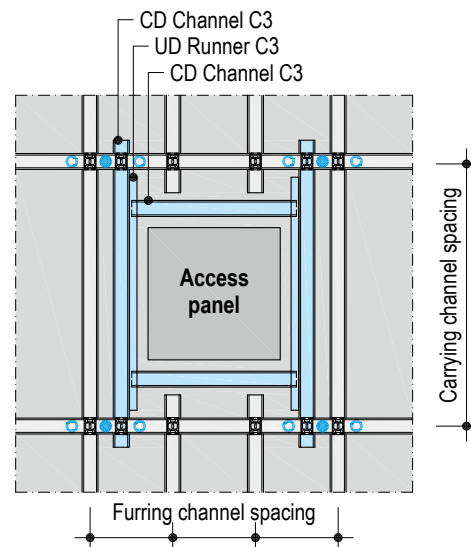
Surface treatment of the access panels with AQUAPANEL® Cement Board Indoor Lighter.Easier.Faster. Inlay according to Knauf system data sheet for the respective system.

Note for the painter

Generally remove the access panel inner frame before painting separately so that no paint penetrates the narrow joint between the hatch and the outer frame.

Examples, scheme drawings ceiling installation

Double-level metal grid (D282.de)



Additional grid

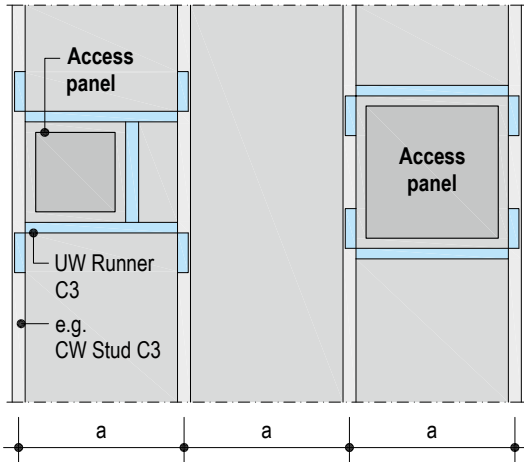
● 4 additional suspension points (e.g. Nonius suspension)

○ Alternative suspension points

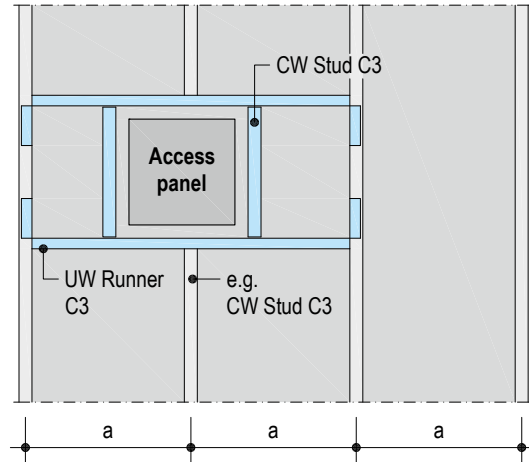
Further suspenders are required if the suspended profiles are to be exchanged.

Examples, scheme drawings wall installation

Stud spacing a continuous



Stud spacing a with cut stud and trimmer profiles

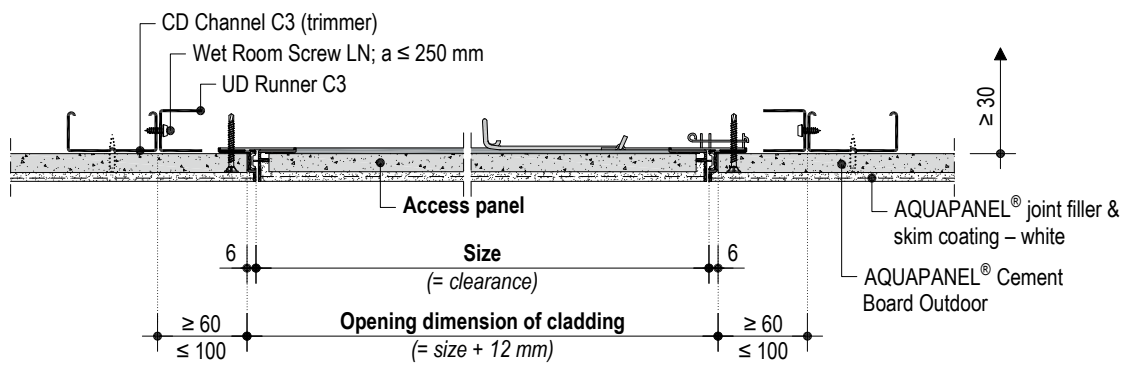


Additional grid

Construction details

Scale 1:5 | Dimensions in mm

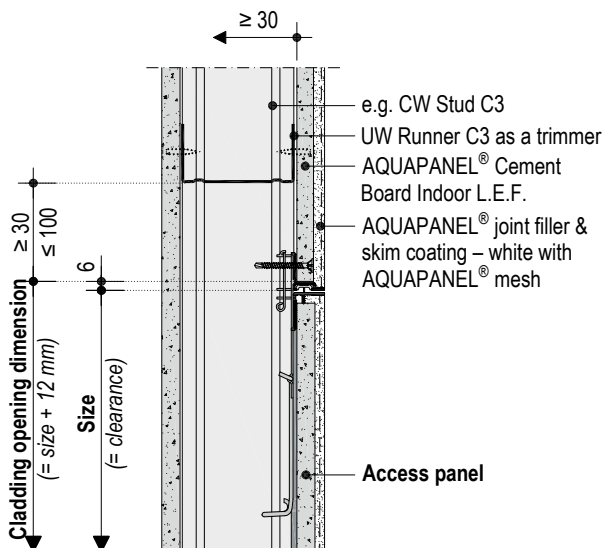
E113b.de-V2 Board Ceiling AQUAPANEL® – vertical section



1) Clearance to basic ceiling / installations

2) No UD Runner required on the profile trimmer lateral to the furring channels, as the spacing to the CD Channel can be reduced to 30 mm here.

E113b.de-V1 Metal Stud Partition AQUAPANEL® – vertical section



3) Opening displacement clearance of the access panel

Product range

Description	Width x length mm	Weight kg/pieces	Packaging unit	Material number	EAN
AQUAPANEL® REVO 12.5 MSK	300 x 300	2.5	1 piece / pack	00154591	4003982409492
	400 x 400	3.6	1 piece / pack	00154592	4003982409508
	500 x 500	5.4	1 piece / pack	00154593	4003982409515
	600 x 600	7.1	1 piece / pack	00154594	4003982409522

Required specifications for ordering

- Dimension of the access panel (width x length)
- Cladding thickness

**Observe safety data sheet!**

For safety data sheet see

pd.knauf.de

Videos for Knauf systems and products can be found under the following link:

youtube.com/knauf

The Knauf Infothek App now provides all the current information and documents from Knauf Gips KG at any time and in every location in a clear and comfortable way.

knauf.de/infothek**Knauf Direct**

Technical Advisory Service:

▶ knauf-direkt@knauf.com▶ www.knauf.de**Knauf Gips KG** Am Bahnhof 7, 97346 Iphofen, Germany

All technical changes reserved. Only the current printed instructions are valid. The stated information represents current state-of-the-art Knauf technology. The entire state of approved engineering rules, appropriate standards, guidelines, and rules of craftsmanship are not included herewith. These and all application instructions have to be adhered to separately by the installer. Our warranty is expressly limited to our products in flawless condition. All application quantities and delivery amounts are based on empirical data that are not easily transferable to other deviating areas.

All rights reserved. All amendments, reprints and photocopies, including those of excerpts, require our expressed permission.