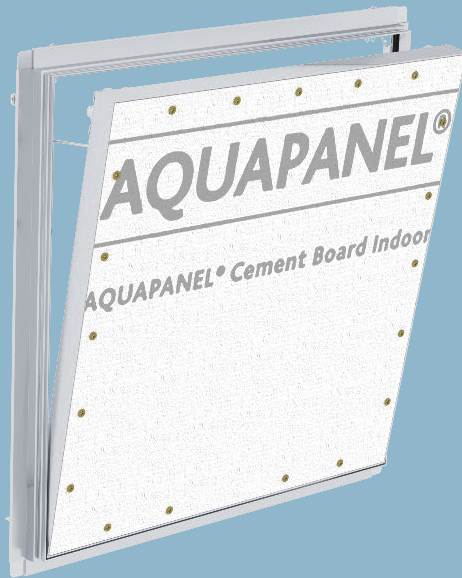


### Note on English translation / Hinweise zur englischen Fassung

This is a translation of the product data sheet valid in Germany.

All stated details and properties are in compliance with the regulations of the German standards and building regulations. They are only applicable for the specified products, system components, application rules, and construction details in connection with the specifications of the respective certificates and approvals.

Knauf Gips KG denies any liability for applications outside of Germany as this requires changes acc. to the respective national standards and building regulations.

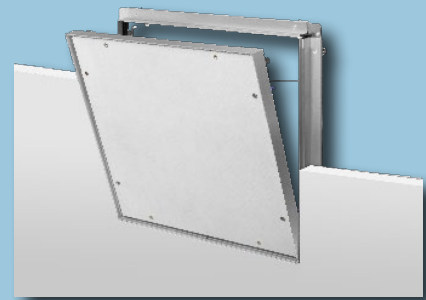


Drywall Systems

E113c.de

Product Data Sheet

2023-12



# AQUAPANEL® REVO 25 OSK

Access panel for AQUAPANEL® wall constructions in interiors

## Product description

Access panel for installation in walls (drywall partition and furring), suitable for application of ceramic wall coverings without building physics requirements.

AQUAPANEL® REVO 25 OSK consisting of:

- Aluminium outer frame
- Openable and fully detachable hatch
- Screw fastened AQUAPANEL® Cement Board Indoor Lighter.Easier. Faster. without skimming edge (OSK) ex-works
- Seal
- Joint sealing tape for joint backsplash area

## Properties and added value

- Wet room access panel for wall installation
- Airtight and dust-proof access panel class 3, EN 1026 + 12207, suction and pressure (tested airtight up to 600 Pascals, over or under pressure)
- Water action classes W0-I to W1-I acc. to DIN 18534-1
- Corrosivity category C3
- Without skimming edge (OSK)
- All-purpose use for cladding thickness 25 mm
- Retrofitting is possible

## Field of application

Installation in Knauf AQUAPANEL® partition systems with cladding thickness of 25 mm in damp and wet rooms.

## Application

It can be installed together with the substructure/grid or when the cladding is applied. Trimmers made of profiles may be necessary depending on the construction type and installation conditions of the access panels.

### Trimmer

Arrange trimmers made of corrosion protected CW studs/UW runners in accordance with the dimension of the access panel. Maintain spacings between cut-out section and trimmer profiles of at least 30 mm and a maximum of 100 mm.

See the design details and the scheme drawings on the following page.

### Cladding

Cut out the opening of cladding approx. 12 mm larger than the access panel size (= clearance).

Screw fasten the partition cladding to the trimmer profiles as well.

If the distance to the installations in the wall is less than 200 mm, the installation of the outer frame must be undertaken together with the surface cladding installation (swivelling into the cladding already installed not possible).

### Retrofitting

The cladding must be sawed out in case of subsequent installation of the access panel. Apply a frame backing made of corrosion protected circumferential profile sections (CW-/UW profiles) and attach them with screws (screw spacing  $\leq$  150 mm).

**Note** The cut edges of the C3 profiles or small parts must always be recoated. We recommend the grey Drystar corrosion protection lacquer C3/C5M. On-site, it will be immediately recognizable if all the required subsequent work has been carried out.

## Installation of the access panel

Cladding	
25 mm	

Place outer frame of the access panel in the opening, lay it on the cladding, align and screw attach. Subsequently, insert the hatch and check the lock for proper functioning.

A clearance of  $\geq$  30 mm must be ensured in the upper third of the rear side of the hatch for opening the panel.

Use AQUAPANEL® Maxi Screws SB for the attachment of the frame to the cladding.

### Jointing

Fill outer frame of access panel and the wall surface with AQUAPANEL® Fugen und Flächenspachtel – weiß joint filler & skim coating – white. Fill in screw heads of the hatch as well.

See also Knauf system data sheets for the respective system.

### Cleaning

Clean outer frame, hatch, and particularly the seal thoroughly after filling.

### Notes

With rectangular ceiling access panels, the lock and hinge system is always mounted as standard on the long side. With wall mounted access panels, the lock system is always at the top and the hinge system is always at the bottom.

At least

- 2 screws per frame side for hatch size  $<$  500 x 500 mm
  - 3 or 4 screws for hatch size  $\geq$  500 x 500 mm
- Screw spacing maximum 500 mm.

No cladding board joints are allowed near the access panels.

Observe the installation instructions enclosed with the product.

Apply the wall and furring systems in accordance with the respective most current Knauf system data sheets.

## Coatings and linings

Surface treatment of the access panels with AQUAPANEL® Cement Board Indoor Lighter. Easier. Faster. Inlay according to Knauf system data sheet for the respective system.

### Access panel designed for tiling

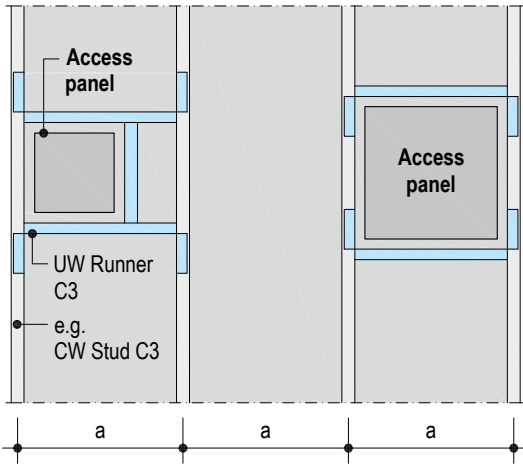
Only apply the tiles using the thin bed method (max. adhesive thickness + tile 10 mm). Fill the joint between cladding and outer frame after installation of the access panel, the wall tile can then be directly applied to the front clearance dimension (= size). Insert the seal, see also [Installation instructions Knauf Access Panel REVO - designed for tiling VT18-A01.de](https://www.knauf-ceiling.com/~/media/Files/Access_Panels/Access_Panel_REVO_-_designed_for_tiling_VT18-A01.de).

### Note for the painter

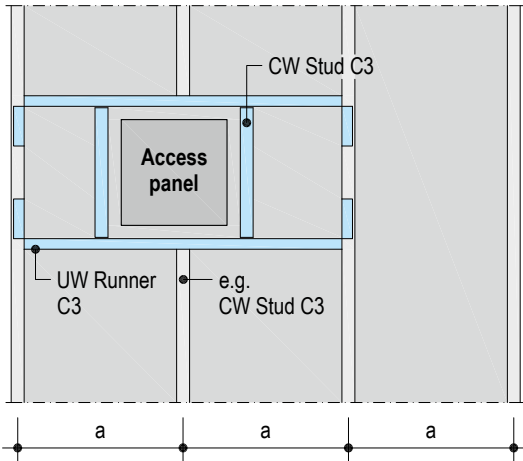
Generally remove the hatch before coating and paint separately using the same tool and the same paint so that no paint penetrates the narrow joint between the hatch and the outer frame.

Examples, scheme drawings

Stud spacing a continuous



Stud spacing a with cut stud and trimmer profiles

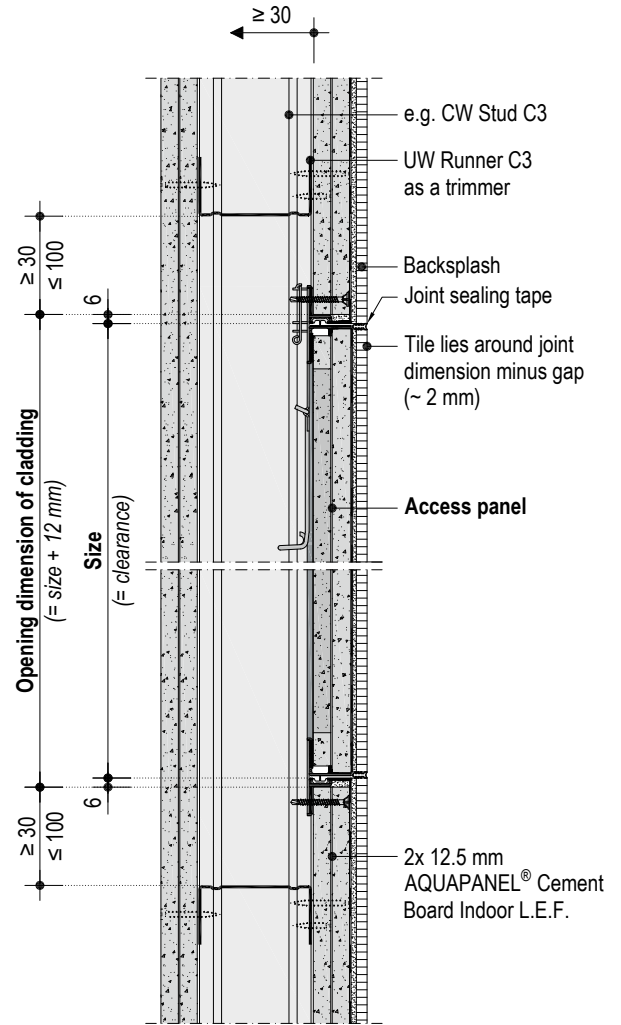


Additional grid

Design details

Scale 1:5 | Dimensions in mm

E113c.de-V1 Metal Stud Partition AQUAPANEL® – vertical section



1) Opening displacement clearance of the access panel

## Product range

Description	Width x length mm	Weight kg/pieces	Packaging unit	Material number	EAN
AQUAPANEL® REVO 25 OSK	300 x 300	2.9	1 piece / pack	00154583	4003982409454
	400 x 400	4.2	1 piece / pack	00154584	4003982409461
	500 x 500	6.2	1 piece / pack	00154585	4003982409478
	600 x 600	8.2	1 piece / pack	00154586	4003982409485

## Required specifications for ordering

- Dimension of the access panel (width x length)
- Cladding thickness
- Access panel for tiling: Specify the tile dimensions (width x height), joint width, adhesive thickness, tile thickness and cladding thickness (The exact clearance is determined by the tile format.)

Note	For on-site tiling:
	<ul style="list-style-type: none"> <li>■ Maximum tile thickness: 7 mm</li> <li>■ Maximum area weight of the tiles: 16 kg/m<sup>2</sup></li> </ul>

**Observe safety data sheet!**

For safety data sheet see

[pd.knauf.de](http://pd.knauf.de)

Videos for Knauf systems and products can be found under the following link:

[youtube.com/knauf](https://youtube.com/knauf)

The Knauf Infothek App now provides all the current information and documents from Knauf Gips KG at any time and in every location in a clear and comfortable way.

[knauf.de/infothek](http://knauf.de/infothek)**Knauf Direct**

Technical Advisory Service:

▶ [knauf-direkt@knauf.com](mailto:knauf-direkt@knauf.com)▶ [www.knauf.de](http://www.knauf.de)**Knauf Gips KG** Am Bahnhof 7, 97346 Iphofen, Germany

All technical changes reserved. Only the current printed instructions are valid. The stated information represents current state-of-the-art Knauf technology. The entire state of approved engineering rules, appropriate standards, guidelines, and rules of craftsmanship are not included herewith. These and all application instructions have to be adhered to separately by the installer. Our warranty is expressly limited to our products in flawless condition. All application quantities and delivery amounts are based on empirical data that are not easily transferable to other deviating areas.

All rights reserved. All amendments, reprints and photocopies, including those of excerpts, require our expressed permission.