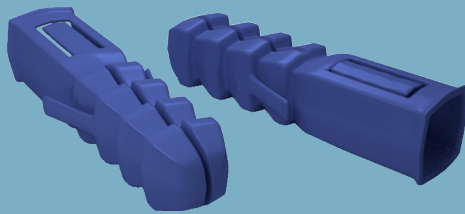


Plastic Dowel

Technical Data Sheet 12/2023



Plastic Dowel

Dowel

Product Description

Components used in the dry construction systems for fixing the substructure to the masonry (concrete, brick, briquette.. etc).

Standards referred to

-

Fields of Application

- Gypsum board partition wall systems
- Gypsum board suspended ceiling systems
- Gypsum board dry wall linings

Properties

- Clean and easy installation

Technical Data

Description	Weight (kg/box)	Packaging Unit (pcs./box)	Material Number
Plastic Dowel M8	1,15	1000	60456

System Performance Values

Performance values as sound insulation, fire resistance etc. may differ acc. to the drywall system to be applied. Please check the performance values of the drywall systems;

[Knauf Technical Website](#)
[Document Center](#)

Application

Application should be done acc. to the Knauf Technical Brochures of the respective drywall system.

▶ 444 YAPI - 9274

▶ www.knauf.com.tr / www.teknik.knauf.com.tr

▶ teknik@knauf.com

Center: Knauf Moment Beştepe Office, Beştepe Mah. 32.Cadde No:1/212-218 06560 Beştepe-Yenimahalle
/ ANKARA Tel: 0312 297 0100 Faks: 0312 266 4506