



## METALWORKS MESH



## BENEFITS

- Create a contemporary, open feel
- Three premium colors
- Flexible design—use as accent borders, clouds or full ceilings
- Simple and safe installation – panels lay in standard 24mm grid with borders or finished edges
- Can be used in Axiom canopies
- Additional sizes, colors available as custom options

## APPLICATION AREAS

- Office
- Education
- Hospitality and retail
- Healthcare
- Transportation (including Light Rail)



## COLOR SELECTION



White



Silver Grey



Tech Black

Due to printing limitations, shades may vary from actual product.

## INTERTWINE YOUR DESIGN

The industry's broadest portfolio of standard Mesh ceilings allows you to weave, and stretch your imagination.

### Weave a new tale.

Whether you follow a linear road or hopscotch the squares, your woven story can have a colorful conclusion. Three standard designs and different finishes provide the possibilities.

### Expand your horizons.

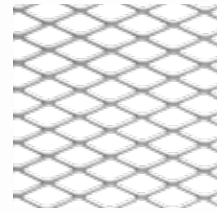
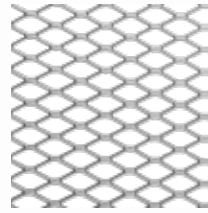
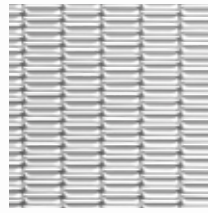
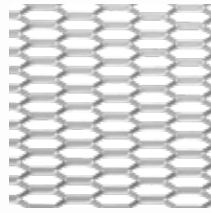
Climb the lattice or ride a waterfall's cascade with three expanded metal patterns in different finishes.

# PRODUCT SELECTION

## Expanded Metal (Actual 1:3 scale shown)

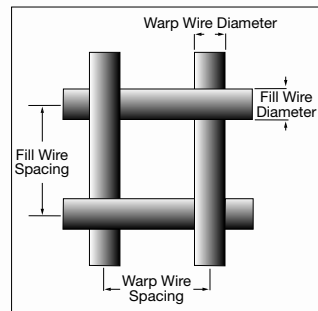
Linen web/Hexagon

Lattice Flat/Rhombic

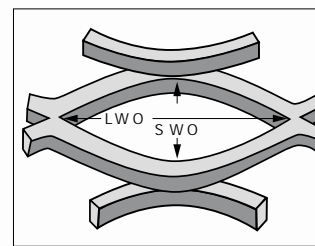


	Hexagon #1	Hexagon #3	Rhombic #4	Rhombic #7
Item:	BP5316M6A1	BP5332M6A1	BP5336M6A1	BP5333M6A1
Dimensions:	600 x 600mm	600 x 600mm	600 x 600mm	600 x 600mm
Short Way of Opening:	7.2mm	3.75mm	11mm	12.6mm
Long Way of Opening:	26.4mm	26.4mm	25.9mm	30.5mm
Open Area:	74%	80%	78%	84%
Weight:	3.5 kgs/m <sup>2</sup>	6.4 kgs/m <sup>2</sup>	2.6 kgs/m <sup>2</sup>	3.3 kgs/m <sup>2</sup>

Woven & Welded Wire Key



Expanded Metal Key



SWO – Short Way of Opening  
LWO – Long Way of Opening

# VISUAL SELECTION

Item Number*	Description	Panel Dimensions (mm)	Interior Pattern Dimensions (mm)	% Open Area	Fire Rating	Weight/Panel (**bulk packed) (kgs/m <sup>2</sup> )
WOVEN WIRE						
SQUARE WEAVE						
6129AM __	Twin Round Narrow	610 x 610	6.4/14.5/6.4/14.5	61%	Class A	7.31
6412AM __	Twin Flat Narrow	610 x 610	6.4/19/6.4/19	53%	Class A	5.86
6128AM __	Triple Narrow	610 x 610	80.1	62%	Class A	5.1
EXPANDED METAL						
BP5336M6A1WH	Lattice Flat/Rhombic	600 x 600	SWD 8.25, LWD 26.17	41.76%	Class A	2.65
BP5316M6A1WH	Linen Web/Hexagon	600 x 600	SWD 14.04, LWD 30.32	30.9%	Class A	4.19
6139AM __	Cascades	610 x 610	SWD 37.45, LWD 76.03	49.46%	Class A	2.96

\* When specifying or ordering, include the appropriate 2-letter color suffix (Ex: SG, NC)

Note: 100 sqm order quantity for all Woven and Woven items. 160 sqm order quantity for Expanded Metal items.

## SUSPENSION SYSTEM

24mm Standard: Prelude

## PHYSICAL DATA

### Material

All items are cold-rolled steel. Linen Web and Lattice Flat are available in aluminum.

### Surface Finish

Available finishes include a range of smooth, factory-applied powder-coated, Linen Web and Lattice Flat are available in aluminum finishes.

### Fire Performance

ASTM E84 surface burning characteristics. Flame Spread Index 25 or less. Smoke Developed Index 50 or less. Fire Class A.

All MetalWorks Mesh panels are non-combustible. As with other architectural features located at the ceiling, Mesh panels may obstruct or skew the planned fire sprinkler water distribution pattern, or possibly delay or accelerate the activation of the sprinkler or fire detection systems by channeling the heat from a fire either toward or away from the device.

For panels that do not meet the criteria for open-grid ceilings as defined by NFPA 13, a 600x600mm or 610x610 mm (as the case may be) mineral fiber tile should be placed on the back of the Mesh panel

when installing the ceiling, with the sprinkler installed below both panels. (Fine Fissured item 1728BL is an acceptable lay-in product for this use.)

Designers and installers are advised to consult a fire protection engineer, NFPA 13, and local codes for guidance where automatic fire detection and suppression systems are present.

Weight : 6.4kg/m<sup>2</sup>

### Design Considerations

For more open MetalWorks Mesh items where the suspension system may be visible through the panels, consider using a 360° Painted Grid System coordinated with the panel color.

### Installation Considerations

Hold down clips may be required in some installations. The edges of MetalWorks Mesh panels feature unique detailing. Use caution and wear appropriate hand and eye protection when installing or cutting these metal panels. [com/metalworks](http://com/metalworks) for details and cutting recommendations.

## CONTACT US

IP/1500/012019

### Knauf Ceiling Solutions (India) Private Limited

Dosti Pinnacle, Unit No 503, 5th Floor, Plot No E-7, Thane Industrial Area, Wagle Estate, MIDC, Thane West - 400604; Maharashtra, India.

Tel: 022-6285 0800, Fax: 2491 3604, Contact: 1860 266 7080

E-mail: [helpdeskindia@knauf.com](mailto:helpdeskindia@knauf.com)

