

KNAUF

Drywall Systems

Knauf KW.111

The Go-To System for Swift Interior Walls.

System-Data-Sheet

2025-09



System Description

Knauf KW111 Drywall Partition System is a performance-based, non-load-bearing internal partition designed typically for commercial and residential applications. The system consists of a robust metal framework utilizing single Knauf CW Studs and Knauf UW Tracks as head and base channels. The framework is lined on each side with a single layer of Knauf Gypsum Board, secured with Knauf Drywall Screws. The joints are finished with Knauf joint treatment materials, creating a seamless surface ready for decoration.

This system provides an excellent base for a variety of finishes while offering a moderate level of fire resistance and sound insulation performance.

Build on us.



0-60 minutes



35 - 51dB



3-10m



77-185.8mm

• Positioning Knauf UW Tracks and Knauf CW Studs

- Mark location of partitions accurately on concrete structure with stringline / laser
- Use Knauf Sealing Tape or Acoustical Sealant under Knauf CW studs and UW Tracks forming the perimeter for acoustic rated partitions.

• Installing Floor and Ceiling Channels

Securely fix Knauf Floor & Ceiling Channels to the floor and ceiling by fixing a single row of Knauf anchors at a maximum spacing of 600mm. If the floor is uneven, use a suitably sized timber sole plate, which should be the same width as the channel, to create a level base.

If you're working with a new, damp concrete or screeded floor, it's wise to install a damp-proof membrane between the floor and the channel or sole plate to prevent moisture issues.

• Framing and Openings**a. Splicing and Stud Extension**

To extend studs, overlap them by a minimum of (stud web x 10) and secure them together using Knauf LN Screws.

b. Door and Opening Frames

When planning for doors, you must consider the partition's thickness and how it relates to the door frame. Refer Knauf Door Assembly Details. Always consult with the door manufacturer for specific door details. For high acoustic requirements, seek advice from both door manufacturers and acoustic consultants.

You also need to pre-plan and frame any openings required for services such as horizontal ducts, fire dampers, or access panels. These framed openings should be built using standard metal stud procedures, as per Knauf recommended details.

c. Control Joints

Control joints may be necessary to relieve stresses from structural expansion and contraction. They should be applied at:

- Maximum 9m of continuous partition length.
- At all control/expansion joints present in the structure.
- At any change in the substrate material.

d. Deflection Heads

Partition head deflection designs are sometimes required to accommodate the vertical movements of the supporting floor or roof structures, especially those exposed to positive and negative deflection. Refer Knauf deflection head details.

e. Penetrations

When services penetrate a fire-resistant or sound-insulating wall, you must take care to ensure the wall's performance isn't compromised. The services themselves must also not act as a conduit for fire or sound. Refer "Service installations" section for more details.

Electrical Work

All electrical services should be installed according to BS 7671 or an equivalent international standard. You can use the pre-cut service holes in the studs to route small services and cables. If you need to cut a stud, cut them all from the same end to ensure the cut-outs are aligned. Cables passing through the metal frame must be protected by conduit or other means to prevent abrasion.

For switch and socket boxes, refer Knauf details. For enhanced acoustic performance, you can use a high-performance socket box detail.

Independent Support for Heavy Services

For services like fire dampers and their associated ductwork, you must consider their size and weight. If they're too heavy for the partition to support directly, they must be independently supported from the main structure.

• Fixtures and Fittings

a. Lightweight fixtures: can be attached directly to the plasterboard.

b. Medium-weight fixtures: Refer Knauf details.

c. Heavyweight fixtures, such as sinks or wall cabinets (meeting BS 5234: Part 2), should be fixed to plywood that is secured as per Knauf details.

d. Board finishing

Refer to Knauf installation guidelines.

e. Tiling

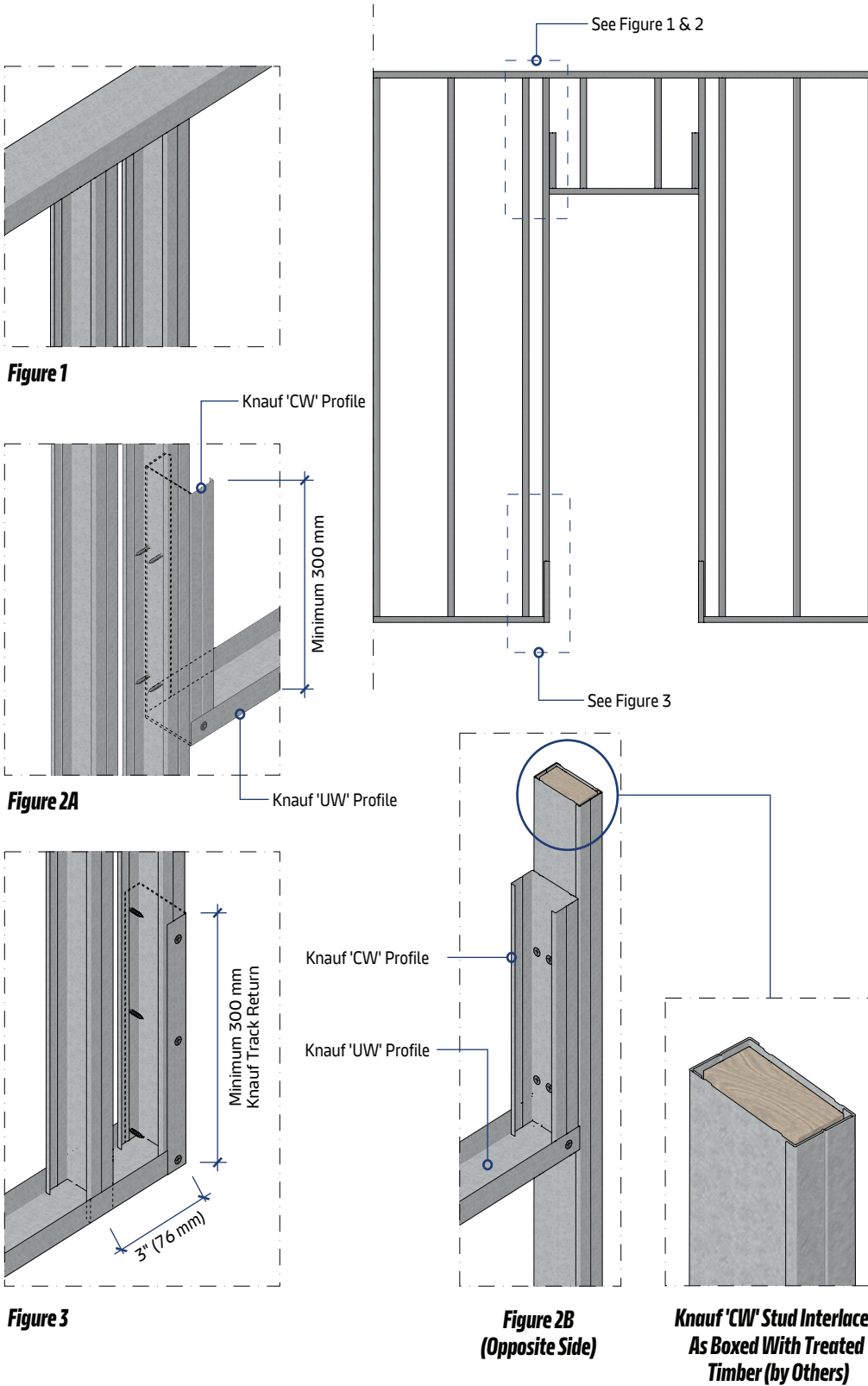
Tiles up to 32 kg/m². can be applied to the surface of Knauf drywall systems. Tiles up to 70kg/m². can be applied when using Knauf Aquapanel Cement Board Indoor.

Refer to Knauf Tiling Guide for further information.

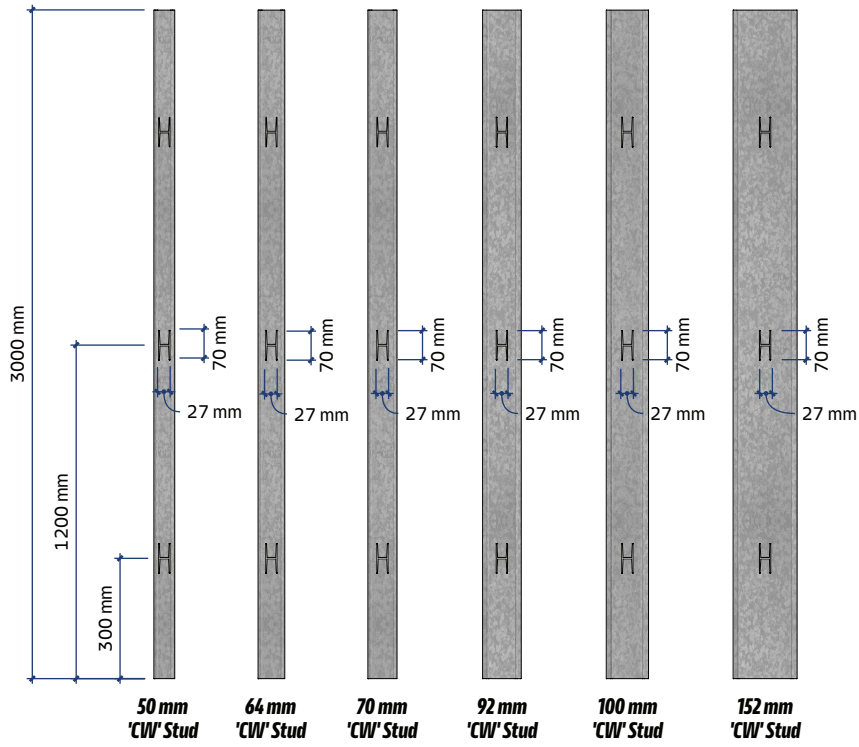
f. Mold & moisture protection

Where additional protection against moisture is required, for example in a bathroom, kitchen or other area subject to intermittent humidity, then the moisture resistant variant of the required board type should be specified. If protection against mold spores forming is required, then Knauf GB-WRTX Gypsum Board MOLD or Knauf Aquapanel Cement Board Indoor should be specified.

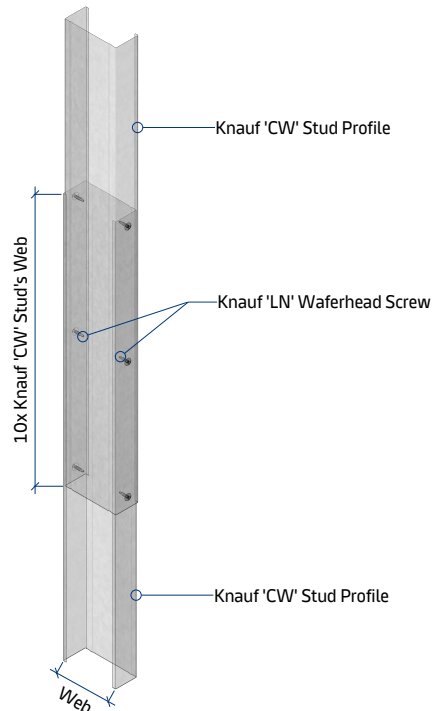
Door Opening



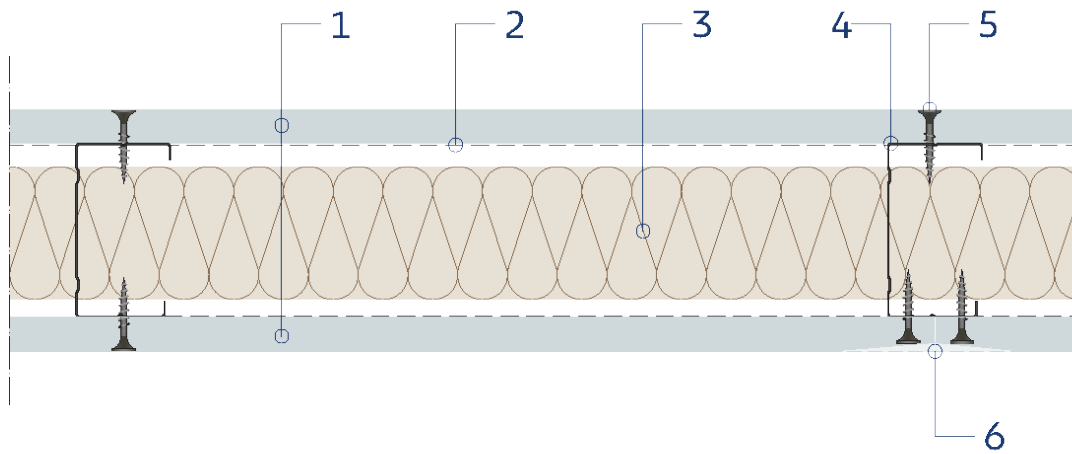
Service Cutouts



Stud Splicing

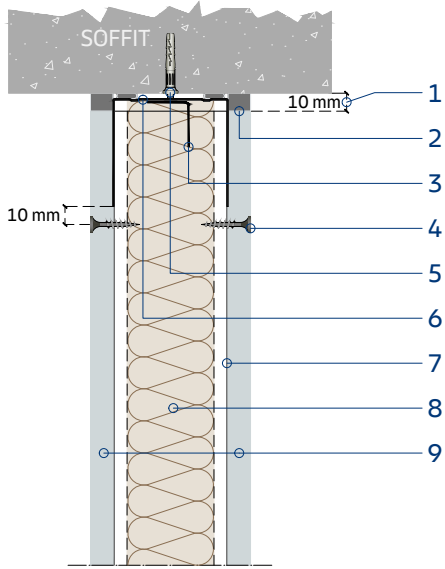


A System Plan

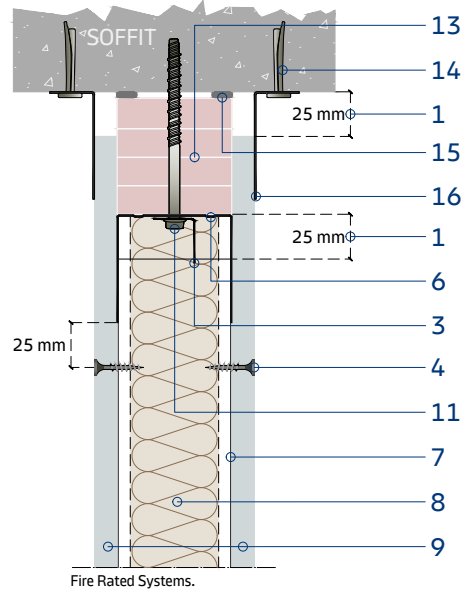


- | | |
|-----------------------------|---------------------------------------|
| 1. Gypsum Board | 4. 'CW' Stud Profile |
| 2. 'UW' Track Profile | 5. 'TN'/'TB' Screw |
| 3. Insulation (If Required) | 6. Fill & Finish and Knauf Joint Tape |

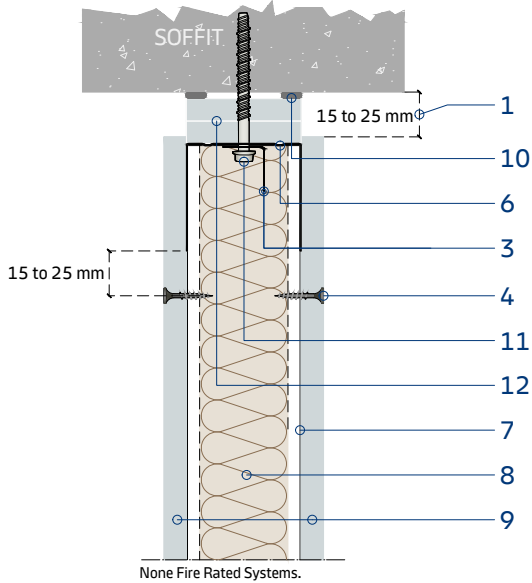
B Deflection Head Detail 10mm



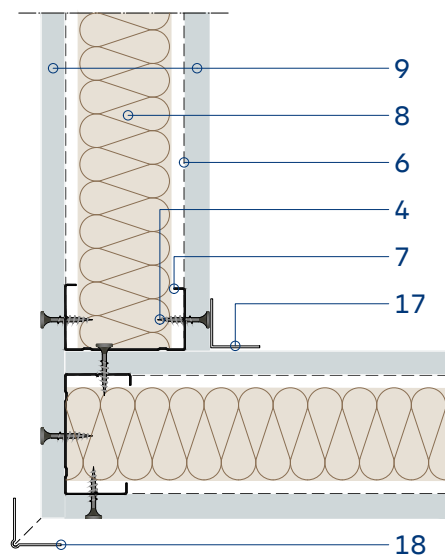
C Deflection Head Detail 25mm (Option 1)



D Deflection Head Detail 25mm (Option 2)

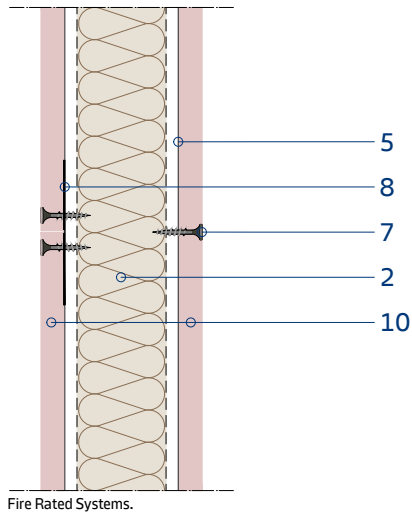


E Corner Detail



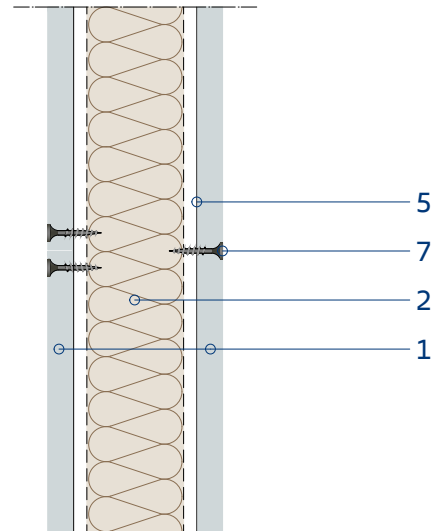
- | | | | |
|-------------------------|-----------------------------|---|-----------------|
| 1. Deflection Allowance | 6. 'UW' Deep Flange | 11. Concrete Screwbolt | 16. Knauf Angle |
| 2. Approved Sealant | 7. 'CW' Stud Profile | 12. Gypsum Board (2x Strips Cut On Site) | 17. Paper Tape |
| 3. L-Angle | 8. Insulation (If Required) | 13. GW-TX (15.9mm) Gypsum Board (4x Strips Cut On Site) | 18. Corner Bead |
| 4. 'TN'/'TB' Screw | 9. Gypsum Board | 14. Wedge Anchor | |
| 5. Approved Fixing | 10. Acoustic Sealant | 15. FR Sealant | |

F Horizontal Board Joint (Flatfix)



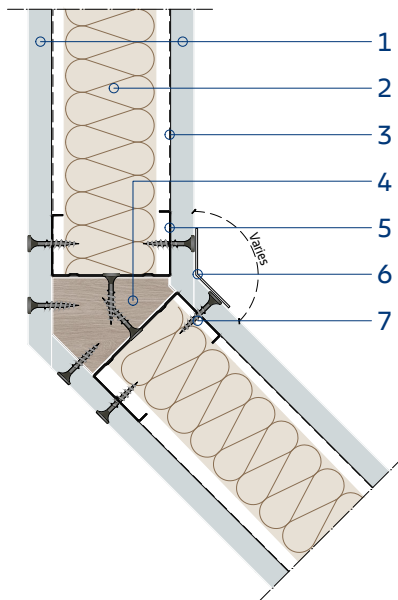
Fire Rated Systems.

G Horizontal Board Joint

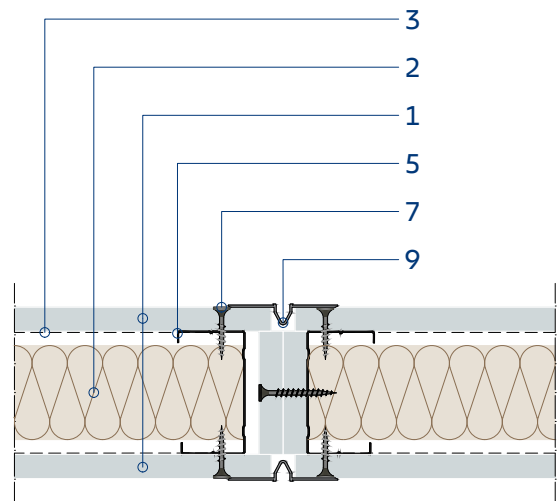


None Fire Rated Systems.

H Splayed Angle Detail



I Movement Joint Detail



Fire Rated Systems Up To 1 Hour.

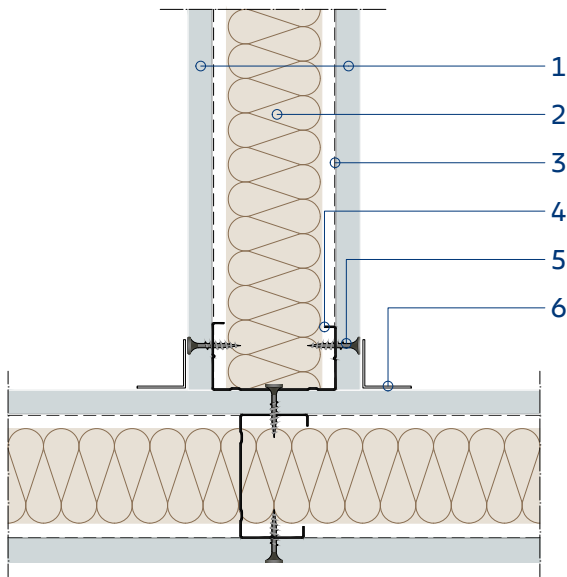
- 1. Gypsum Board
- 2. Insulation (If Required)
- 3. 'UW' Track Profile

- 4. Shape Wooden Filler (By Others)
- 5. 'CW' Stud Profile
- 6. Paper Tape

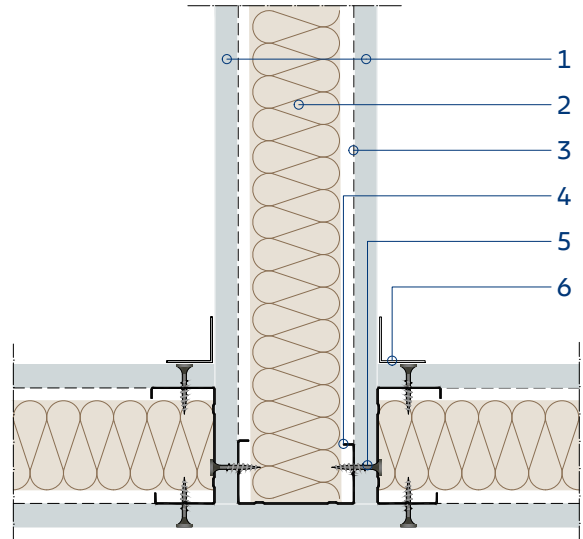
- 7. 'TN'/'TB' Screw
- 8. Flatfix
- 9. PVC Movement Bead

- 10. Fire Rated Gypsum Board

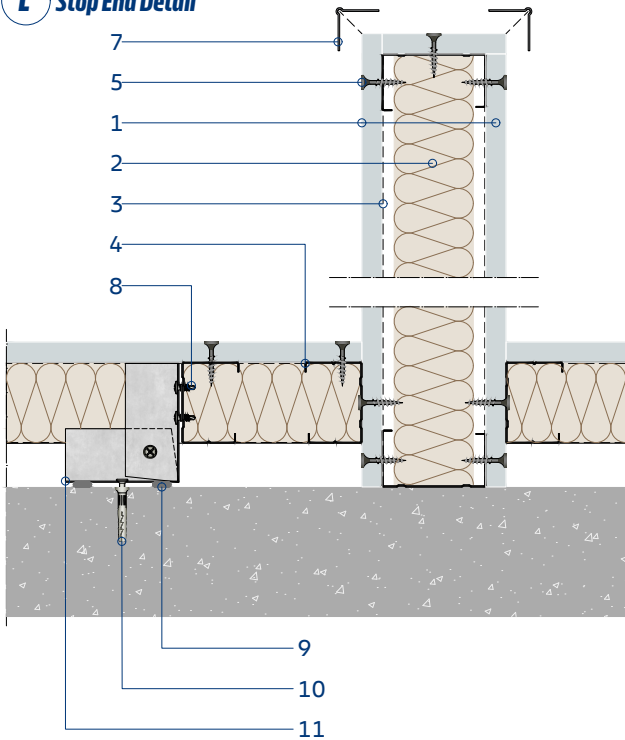
J T-Junction Detail 1



K T-Junction Detail 2



L Stop End Detail



- 1. Gypsum Board
- 2. Insulation (If Required)
- 3. 'UW' Track Profile

- 4. 'CW' Stud Profile
- 5. 'TN'/'TB' Screw
- 6. Paper Tape

- 7. Corner Bead
- 8. 'LN' Waferhead Screw
- 9. Approved Sealant

- 10. Approved Fixing
- 11. 'UW' Runner (Cut Piece)

Customer Service

UAE Tel: +971 4 33771700
8:00 - 17:30 (UAE Time)
Email: GCCcustomer.care@knauf.com
Email: GCCtechnical.care@knauf.com

HQ Address

Knauf LLC
Units B9 & B10 - LIU 6
Dubai Silicon Oasis
Dubai, UAE.

Plant Address

P.O.Box 50006
Ras Al Khaimah, U.A.E.
Tel: +971 7 268 9837
Fax: +971 7 221 5301

Plant Address

Plot no - RY-PH02-M3-008
Raysut - WGS-84-Zone 39
Salalah Free Zone
Salalah, Dhofar, Oman



Observe safety data sheet!
For safety data sheets and CE labelling see
www.Knauf.com



Tender texts for all Knauf systems and products with export functions for Word and PDF.



Videos for Knauf systems and products can be found under the following link:
youtube.com/knauf



All information and documents from Knauf GCC are now always up-to-date,

Knauf GCC

Dubai, United arab Emirates

Subject to technical changes. The current edition applies. The information contained herein corresponds to our current state of the art. The generally recognised rules of construction technology, relevant standards, guidelines and trade regulations must be observed by the contractor in addition to the processing instructions. Our warranty relates only to the flawless quality of our material. Consumption, quantity and execution data are empirical values that cannot be transferred without further ado in the event of deviating conditions. All rights reserved. Changes, reprinting and photomechanical and electronic reproduction, even in extracts, require our express authorisation.

Hotline

800 - KNAUF(56283)

The structural, static and physical properties of Knauf systems can only be guaranteed if only Knauf system components or products recommended by Knauf are used.

www.knauf.com

