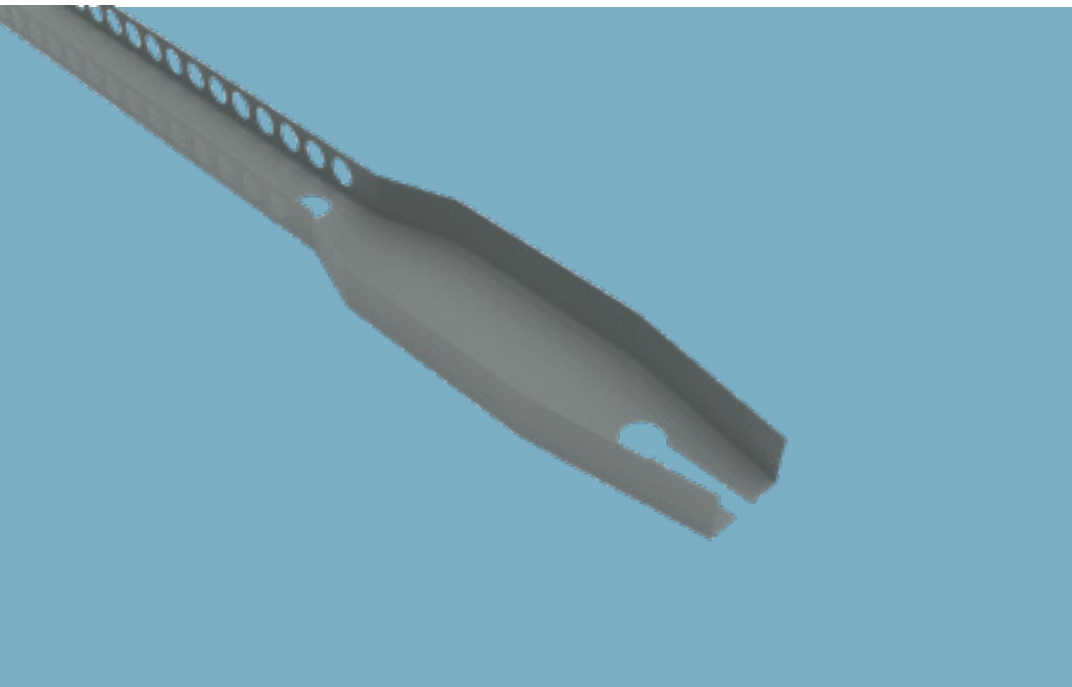


Clip-In Hanger Lower Part

Technical Data Sheet 12/2023



Clip-In Hanger Lower Part

Connector element

Product Description

Components used for connecting the clip-in upper part to the clip-in primary carriers.

Storage

Profiles should be kept in dry environment and direct contact with water should be avoided. Packages should be stored in flat, dry and clean areas.

Standards referred to

-

Fields of Application

- Clip-in suspended ceilings systems

Properties

- Clean and easy installation

Clip-In Hanger Lower Part

Connector element



Technical Data

Description	Thickness (mm)	Weight (kg/pcs.)	Packaging (pcs./box)	Standard	Material Number
Clip-In Hanger Lower Part U 91004	1,2	0,05	100	-	147753

System Performance Values

Performance values as sound insulation, fire resistance etc. may differ acc. to the drywall system to be applied. Please check the performance values of the drywall systems;

[Knauf Technical Website](#)
[Document Center](#)

Application

Application should be done acc. to the Knauf Technical Brochures of the respective drywall system.

▶ 444 YAPI - 9274

▶ www.knauf.com.tr / www.teknik.knauf.com.tr

▶ teknik@knauf.com

Center: Knauf Moment Beştepe Office, Beştepe Mah. 32.Cadde No:1/212-218 06560 Beştepe-Yenimahalle / ANKARA Tel: 0312 297 0100 Faks: 0312 266 4506