

Knauf Resilient Channel

Made of 0.5mm steel the Knauf resilient channel is a very effective, low-cost method of improving sound transmission loss through Knauf drywall partitions. It is used as a cross-furring member fixed to the Knauf CW studs ready for the resilient attachment of gypsum boards; the knurled face makes the gypsum board application easier.

Knauf resilient channel should be installed perpendicular to the steel framing with the attachment flange of the resilient channel installed along the bottom edge.

Knauf Resilient Channel

Installation Details

Knauf Resilient channels are to be installed perpendicular to the steel framing CW studs.

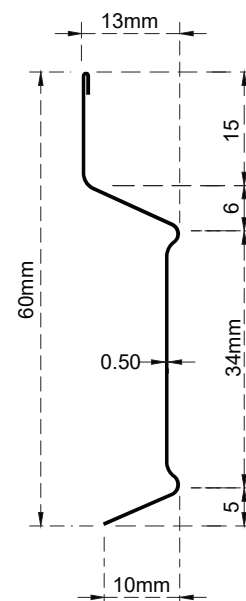
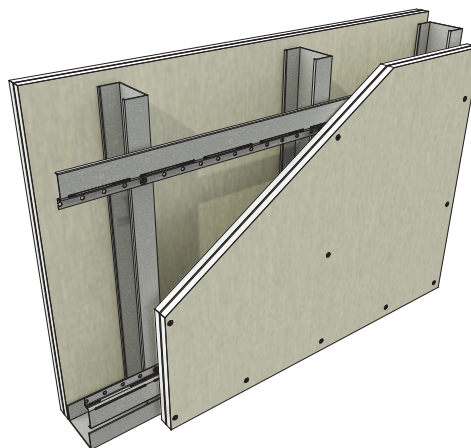
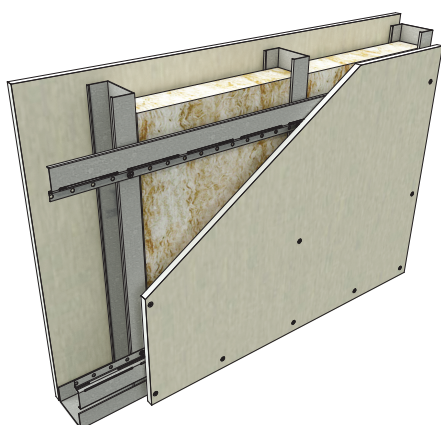
The resilient channel is to be positioned with the mounting flange directly over the steel framing CW stud, and attached using the Knauf LN screws directly through the mounting flange.

Resilient channels should be installed with the mounting flange of the resilient channel down, except at the floor or starter row where the mounting flange may be installed with the flange up to accommodate fixing to the steel framing CW studs.

The first (lowest) row of resilient channel should be no more than 50 mm off of the floor and the last (highest) row of resilient furring channel not more than 150 mm from the ceiling. Where there is a need for splicing of the resilient channel nesting each ends of the resilient channel directly over the steel framing CW stud and screwing through the mounting flanges into the steel framing CW stud is acceptable. When applying gypsum boards they shall be attached to the resilient channel using the appropriate length Knauf TN screw. It is crucial that no TN screw makes contact with the steel framing CW studs.

(This ensures the effectiveness of the Sound resistance of the resilient channels.) No more than two layers 15mm (EN-BS) or 15.9mm (ASTM) gypsum boards should be installed to resilient channel.

Resilient channels should be spaced no more than 600mm (EN-BS systems) or 610 mm (ASTM systems) on-center when installed on Knauf CW studs.



Please contact our sales department for inquiries about storage and packing.

Knauf Head Office

- ▶ Phone: +971 4 337 7170
- ▶ Fax: +971 4 334 9659
- ▶ P.O. Box: 112871, Dubai
- ▶ info@knauf.ae

Knauf Manufacturing Plant

P.O.Box 50006
Ras Al Khaimah, U.A.E.
Tel: +971 7 221 5300
Fax: +971 7 221 5301

Knauf India Branch

No. 8-C, 8th Floor Commercial Complex
Doshi Tower, New No. 205, (Old No. 156)
Poonamallee High Road, Kilpauk
Chennai - 60010. Tamil Nadu, India
Tel: +91 44 49580000
Fax: +91 44 49575300
www.knauf.in



Made in UAE

The information provided in this leaflet is only intended to give guidance in selecting and using Knauf products. While we make every effort to ensure its accuracy, neither Knauf LLC and its branches nor any of its employees or affiliates warrant or assume any legal liability or responsibility for the completeness or usefulness of any failure in installation or constructing structure installation or building or caused by using this leaflet. Readers are advised to independently verify this information prior to reply on it. In particular, readers must obtain appropriate independent advice on the use of products in specific structures, installations or buildings to ensure compliance with all regulations, including health and safety regulations. Knauf reserves the right to amend technical specification without notice.