

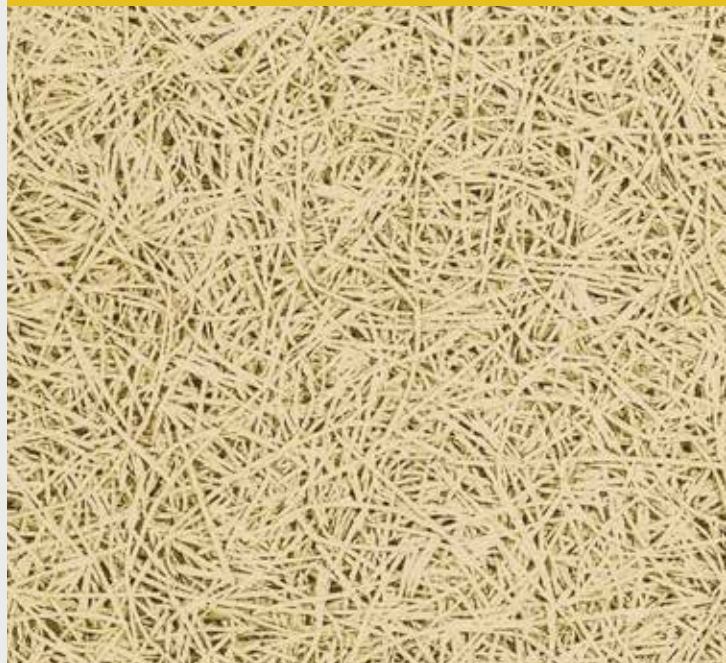
# HERADESIGN® *superfine*

1-layer magnesite bonded wood wool acoustic panel (fibre width approx. 1 mm)

- fine surface texture
- building biology recommended



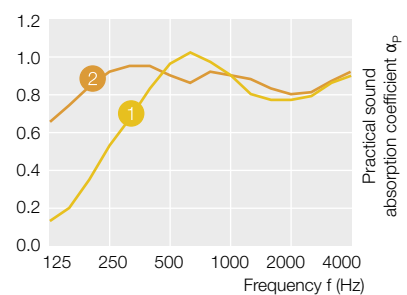
Product data sheet  
HERADESIGN® *superfine*



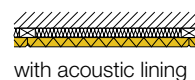
## Product range for HERADESIGN® *superfine*

|  |                        |               |
|--|------------------------|---------------|
| Nominal size mm<br>(further sizes on request)      |                        | 600 x 600 mm  |
|  |                        | 625 x 625 mm  |
|  |                        | 1200 x 600 mm |
|  |                        | 1250 x 625 mm |
| Thickness  | 1-layer                | 15 mm         |
|  |                        | 25 mm         |
|  |                        | 35 mm         |
| Weight kg/m <sup>2</sup>                           | 7.8 (15 mm)            |               |
|  | 11.3 (25 mm)           |               |
|  | 15.0 (35 mm)           |               |
| ABZ General Building Approval: Z-23.15-1562        |                        |               |
| Reaction to fire according to EN 13501-1: B-s1, d0 |                        |               |
| Special formats on request                         | Length of max. 2500 mm |               |

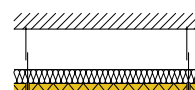
## Sound absorption values



1  $\alpha_w$  up to 0.85 NRC = up to 0.85



2  $\alpha_w$  up to 1.00 NRC = up to 1.00



Extensive detailed information and sketches can be found at [www.heradesign.com](http://www.heradesign.com).