



Installation Guide

Visona Unity

KNAUF

Build on us.



Contents

VISONA

Conditions of use	4
Storage	4
Package opening	5
Layout guide	5
Recommended accessories	6
Installation	7

Visona Unity

- Lay-in tile for demountable acoustical ceiling
- Installation in T-grid main runners with primary spacing profile.
- Edge E+ lengthwise ; edge B+ crosswise (no cross tees required)

Conditions of use

- For internal fitout of buildings
- To be installed in a closed-off building

Storage

The products must be:

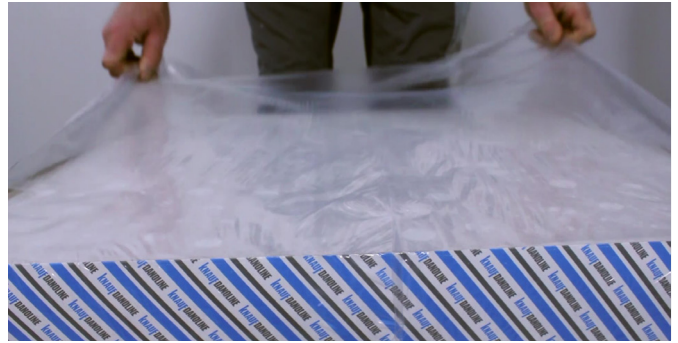
- Stored indoors clean and dry
- Stored at humidities of less than 70% RH and temperatures of less than 50°C
- Positioned on a level base
- Protected from direct moisture
- Protected from impact and shock
- Stacked max. 2 pallets on top of each other



Package opening



Cut the plastic wrapping by running a knife along the sides of the package. Do not cut the plastic on top of the package.

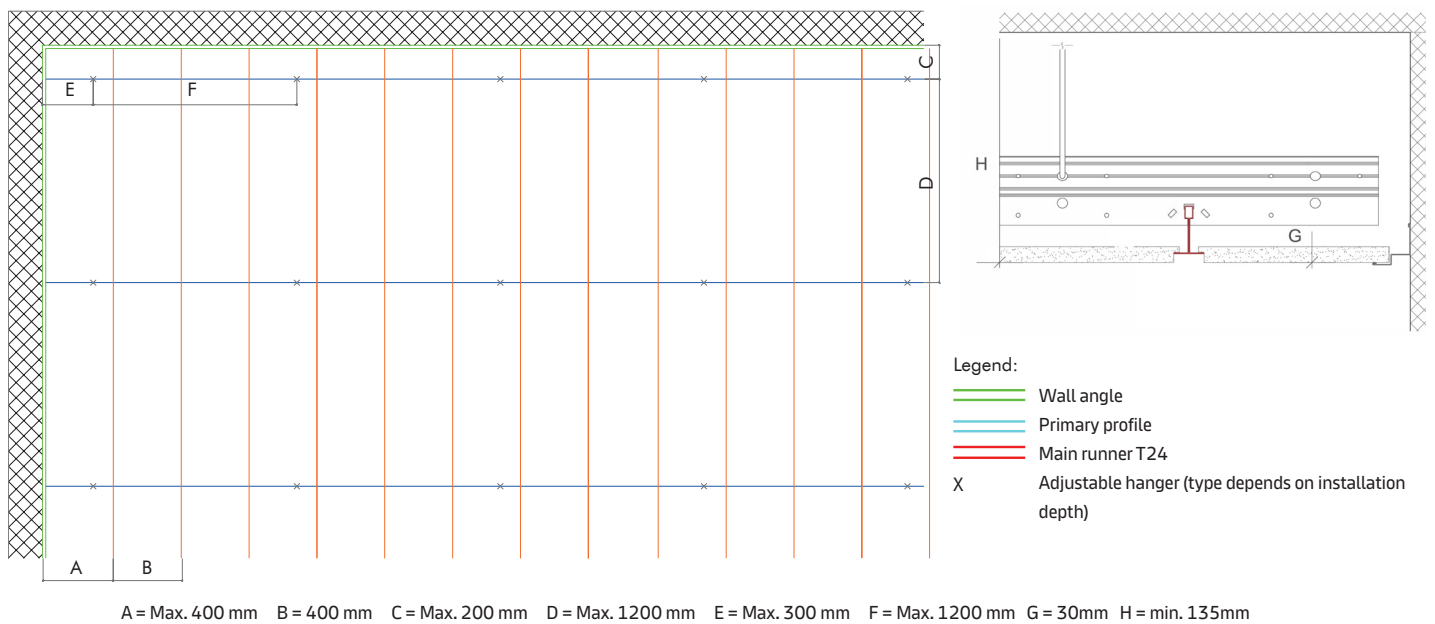


Remove the plastic wrapping.




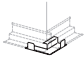

Remove the cardboard liner around the ceiling tiles.

Layout guide



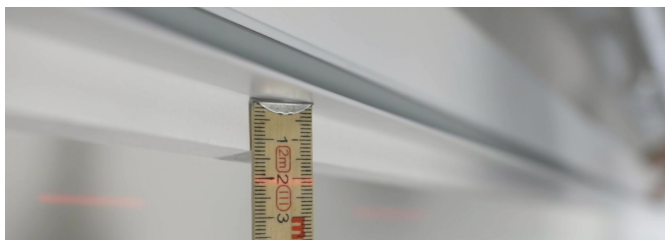
Recommended accessories

Below accessories are tested and approved for use in connection with Visona.

	PRODUCT NAME	SAP NO.	W x L x H (mm)	
	 Main runner T24	467385	24 x 3700 x 38	
	 Primary profile 200	715589	10x2500x65	
T-grid	 R/R screw	181808	-	
		Adjustable hanger The size specification indicates the min. and max. range	469861	165 - 280
			469868	315 - 580
			469872	510 - 970
			469876	630 - 1210
			469878	755 - 1460
469880			900 - 1750	
	 Shadow line trim type MS10	316330	19+11 x 3000 / 13+19	
	 Outside corner for shadow trim	316310		
Extra	 Inside corner for shadow trim	316312		
	 Hold down clip	113734	-	

Installation

Before installation, please ensure that fixtures to primary construction can withstand the load of the ceiling.
Best Practice: Use of clean cotton gloves when handling product tiles will ensure a good result and a ceiling without fingermarks.



Wall angles

- Mark the location of the wall angles on the walls and columns in relation to the required ceiling height.
- Fix the wall angles at max. 300 mm c/c. Choose the fixings in accordance with the substrate.
- Inside corners (1): cut the corners in a false mitre letting the ends overlap each other, unless anything to the contrary is specified. Finish with a corner cover, if necessary.
- Outside corners (2): must always be mitred. Finish with a corner cover if necessary.



Ceiling layout

- Divide the ceiling surface from the centre of the room or in accordance with the existing ceiling layout.
- The location of light fittings and ventilation units will have an influence on ceiling layout.



Hangers

- Fix adjustable hangers with eye screws or similar securely fastened to the primary construction.
- Install the first hanger at max. 300 mm from the wall. The other hangers should be installed at max. 1200 mm c/c.
- If loads from light fittings etc. are to be borne by the ceiling grid, install additional hangers.
- Refer to distances in the ceiling layout guide above.



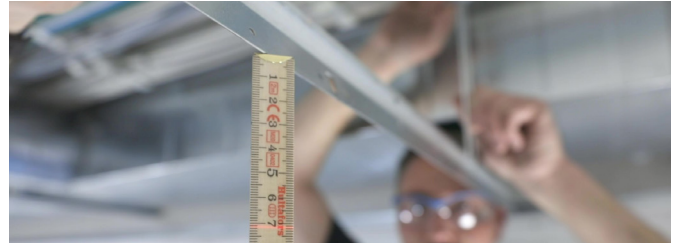
Primary profile

- Installed primary profiles in the same direction as the wished direction of the strips.
- Install the first primary profile max. 200 mm from the wall and remaining primary profiles at max 1200mm c/c. Adjust the profiles vertically according to G in the Layout guide.
- Align the slots for the T24 main runner and ensure the direction of the T24 main runner is perpendicular to the wall by using adjustable fixing.
- Join the primary profiles longitudinally using 2 x R/R 13 screws ensuring a 100mm overlap.
- Adjust the lengths of the primary profiles by using an angle grinder.



Main runners

- Install the main runners into the primary profile parallel at cc 400mm in accordance to the ceiling layout.
- Use pliers to open the tab in the primary profile, place the main runner and close it again to lock.
- Joining the main runners longitudinally by clicking them together.
- Adjust the lengths of the profiles with plate shears, a hacksaw or a crosscut saw with a special blade.



Adjustment

- Check that all profiles are correctly aligned when the entire suspension grid has been installed.
- Adjust the hangers so that they are taut and the ceiling surface is level.



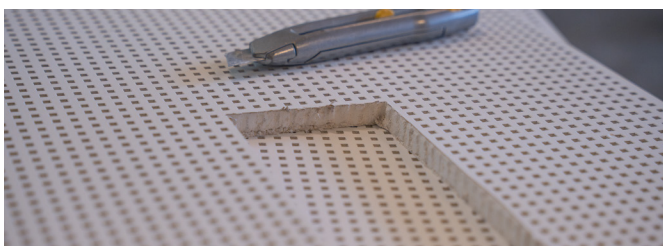
Installation

- Always wear clean cotton gloves when handling ceiling tiles.
- Install the tiles by lifting one side of the tile across the flange of the secondary runner, lifting the opposite side and pulling it back so that the tile is resting on its top lip.



Cutting

- Cut the tiles to size from the front with a fine-toothed saw or by using a knife.
- If metal clips are installed in the place where the tile is to be cut, they must be removed first.
- Grip the metal with a pair of pliers and twist it off gently.



Fixtures

- With smaller units (of up to 3kg) a reinforcement tile of sufficient strength can be installed behind the Visona tile.
- The reinforcement tile must extend all the way into the main runners, so that the weight is transferred to them.
- The total weight should not be greater than 3kg for each m² of ceiling. Where loads are greater than 3kg/m², additional hangers must be used.
- Units over 3kg must be installed independently, so that they do not place any load on the ceiling.



Knauf

Kløvermarksvej 6,

9500 Hobro

Danmark

Phone +45 9657 3000

kundeservice-dk@knauf.com

www.knaufdanoline.com

Build on us.