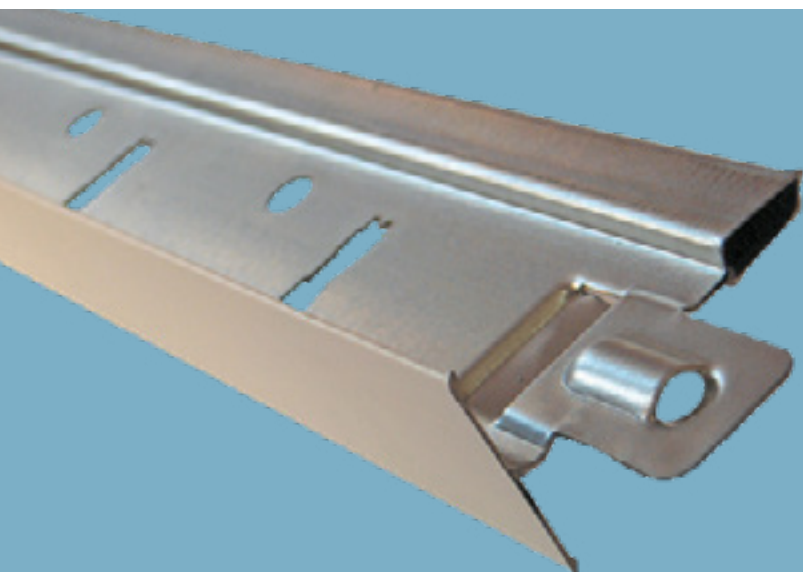


Knauf T24 Pro 40 / Pro 30 Carrying Channels

Technical Data Sheet 12/2023



Knauf T24 Pro 40 / Pro 30 Carrying Channels

Profile

Product Description

Components used in modular suspended ceilings as main and cross tees.

Storage

- Profiles are tied and packed on pallets.
- Direct contact with water should be avoided.
- Packages should be stored in flat, dry and clean areas.

Standards referred to

-

Fields of Application

- Modular suspended ceiling systems

Properties

- Clean and easy installation

Technical Data

Profile Type	Thickness (mm)	Weight (kg/m)	Width (mm)	Height (mm)	Length (mm)	Packaging (pcs./bundle)	
Knauf T 24 Pro 40 Carrying Channels	0,40	0,402	24	38	3600	25	
Knauf T 24 Pro 40 Carrying Channels		0,35		28,4	1200	50	
					600	75	
Knauf T 24 Pro 30 Carrying Channels	0,30	0,26		24	30	3600	25
Knauf T 24 Pro 30 Carrying Channels		0,26			30	1200	50
						0,23	25

System Performance Values

Performance values as sound insulation, fire resistance etc. may differ acc. to the drywall system to be applied. Please check the performance values of the drywall systems;

[Knauf Technical Website](#)

[Document Center](#)

Application

Application should be done acc. to the applicable standards and acc. to the Knauf Technical Brochures of the respective drywall system.

▶ 444 YAPI - 9274

▶ www.knauf.com.tr / www.teknik.knauf.com.tr

▶ teknik@knauf.com

Center: Knauf Moment Beştepe Office, Beştepe Mah. 32.Cadde No:1/212-218 06560 Beştepe-Yenimahalle / ANKARA Tel: 0312 297 0100 Faks: 0312 266 4506