

Note on English translation / Hinweise zur englischen Fassung

This is a translation of the product data sheet valid in Germany.

All stated details and properties are in compliance with the regulations of the German standards and building regulations. They are only applicable for the specified products, system components, application rules, and construction details in connection with the specifications of the respective certificates and approvals.

Knauf Gips KG denies any liability for applications outside of Germany as this requires changes acc. to the respective national standards and building regulations.



Drywall Systems

E141.de

Product Data Sheet

2019-06

F-TEC airtight / dust-proof and smoke-proof

Access panel for wall and ceiling systems

Product description

F-TEC airtight / dust-proof and smoke-proof is an access panel consisting of:

- Anodised aluminium outer frame
- Openable and fully detachable hatch
- Optionally with flush adhesively bonded or screw fixed Diamant GKFI gypsum board (300 x 300 mm to 600 x 600 mm) (with dimension > 600 mm delivered only as screw fixed variant)
- Seal

Properties and added value

- Airtight and dust-proof access panel class 4, EN 1026 + 12207 class 4, suction and pressure (tested airtight up to 600 Pascal, over or under pressure)
- Smoke-proof following DIN 18095
- All-purpose use for cladding thicknesses 12.5, 18, 25 and 30 mm
- Can be retrofitted
- Can be tiled
- Suitable as standard for installation in solid ceilings

Field of application

Installation in Knauf drywall partition and ceiling systems with cladding thickness 12.5 mm, 18 mm, 25 mm and 30 mm as well as in solid walls with requirements for airtightness, dust-proofing and smoke-proofing.

Access panel for wall and ceiling systems

Installation

It can be installed together with the substructure/grid or when the cladding is applied.

Trimmer

Arrange trimmers made of CD channels or CW studs or UW runners in the grid in accordance with the dimension of the access panel.

Maintain distances between cut-out section and trimmer profiles of at least 25 mm and a maximum of 100 mm. Mount 4 additional suspenders in the corner areas of the access panel when mounting in ceilings.

See the design details and the scheme drawings on the following pages.

Cladding

Cut out opening in the ceiling/wall cladding approx. 20 mm larger than the access panel size. Screw fasten the cladding to the trimmer profiles as well.

If the distance to the installations in the ceiling or wall is less than 200 mm, the installation of the outer frame in the gypsum board must be installed together with the cladding installation (swivelling into the cladding already installed not possible).

Retrofitting

The cladding must be sawed out for subsequent installation of the access panel (only possible for ceilings). The opening should be backed with circumferential profile pieces (CD, required edge spacing for contact surfaces of the tabs must be considered) and fixed with screws (screw spacing ≤ 150 mm).

Installation of the access panel

Install the supplied tab parts corresponding to the cladding thickness of the Knauf systems on the outer frame.

Cladding	
12.5 mm	
18 mm	
2x 12.5 / 25 mm	
2x 15 mm	

At least:

- 1 metal tab per panel side or alt. 2 metal tabs per lock/hinge side with dimensions $\leq 400 \times 400$ mm
- 2 metal tabs per panel side for dimension $\leq 600 \times 600$ mm
- 3 metal tabs per panel side for dimension $\leq 800 \times 800$ mm

Place outer frame of the access panel in the opening, lay it on the cladding with the tabs, align and attach with screws.

Use Drywall Screws TB or Diamant Screws XTB (two screws per metal tab) for the attachment of the frame to the cladding. The required screw length depends on the cladding.

Subsequently, insert the hatch and check the lock for proper functioning.

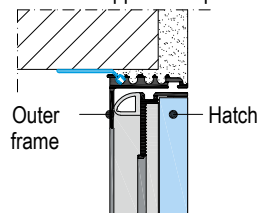
Joining

Fill outer frame of the access panel and ceiling or wall surface with Uniflott. It is not necessary to fill or skim the inner frame to surface quality Q2 with flush adhesively bonded GK boards. Fill in screw heads. For surface quality level Q3 scrape skim the hatch face. Preparation for quality level Q4 on request. Clean outer frame, hatch, and in particular the seal thoroughly after filling.

Installation in solid walls

Design the cut-out in the solid wall to be 18 mm larger than the dimensions of the access panel.

Install the supplied tab parts on the outer frame.



At least:

- 1 metal tab per panel side or alt. 2 metal tabs per lock/hinge side with dimensions $\leq 400 \times 400$ mm
- 2 metal tabs per panel side for dimension $\leq 600 \times 600$ mm
- 3 metal tabs per panel side for dimension $\leq 800 \times 800$ mm

Place outer frame of the access panel in the opening, align and screw fix it using suitable dowels and screws.

Subsequently, insert the hatch and check the lock for proper functioning.

Mount outer frame with plaster.

Notes

With rectangular ceiling access panels, the lock and hinge system is always mounted as standard on the long side. With wall mounted installation, the lock system is always at the top and the hinge system is always at the bottom.

A clearance of ≥ 50 mm must be ensured on the lock side of the hatch rear for opening the panel.

No cladding board joints are allowed near the access panels.

Observe the installation instructions enclosed with the product.

Construct the Knauf systems in accordance with the respective Knauf System Data Sheets.

Coatings and linings

Surface treatment of the access panels with gypsum board inlays in acc. with the Knauf System Data Sheet of the relevant system.

Note for access panels prepared for tiling:

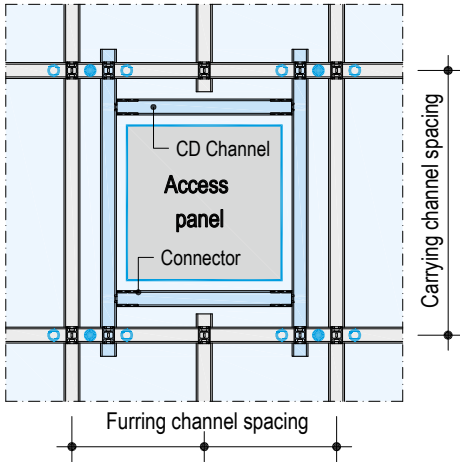
Only apply the tiles using the thin bed method (max. adhesive thickness + tile 9 mm). Fill joint between cladding and outer frame after installation of the access panel. The edge of the wall tile can be directly applied on the front clearance dimension. Install seal (included).

Note for the painter

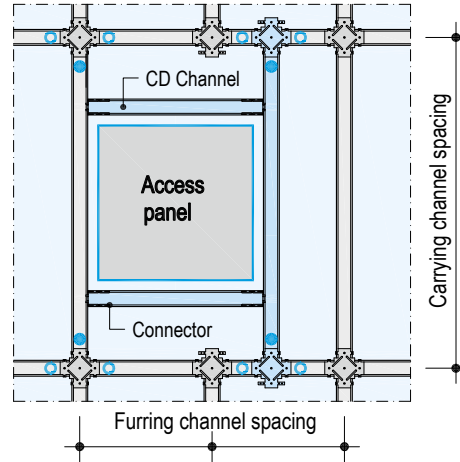
Generally remove the access panel hatch before coating and paint separately so that no paint penetrates the narrow joint between the hatch and the outer frame. Clean any paint remnants from the frame.

Examples, scheme drawings ceiling installation

Double-level metal grid (e.g. D112.de)



Flush metal grid (e.g. D113.de)



Additional grid

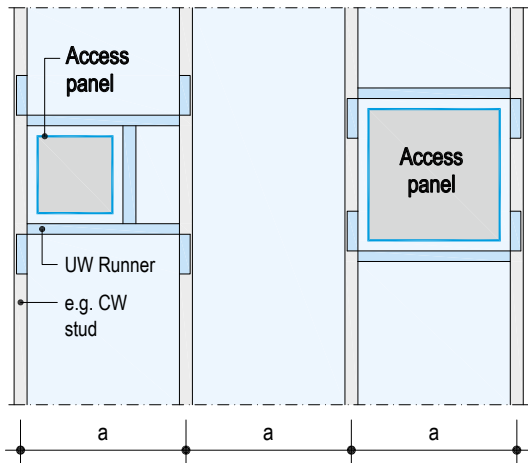
4 additional suspension points (e.g. Nonius suspension)

Alternative suspension points

Universal connectors are required for the trimmers. Further suspenders are required if the suspended profiles are to be exchanged.

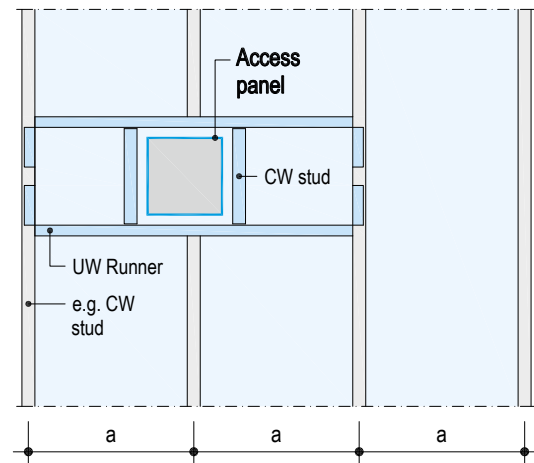
Examples, scheme drawings wall installation

Stud spacing a continuous



Additional grid

Stud spacing a with cut stud and trimmer profiles

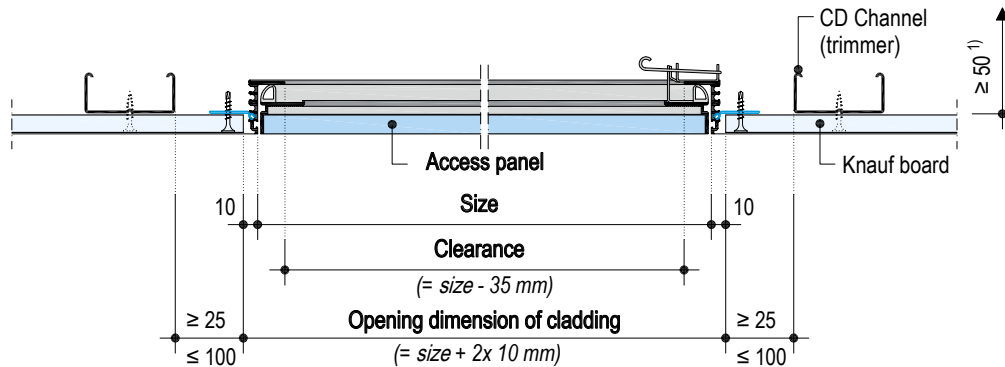


Construction details

Scale 1:5 | Dimensions in mm

E141.de-V1 F-TEC Airtight / Dust-proof and Smoke-proof – ceiling installation – vertical section

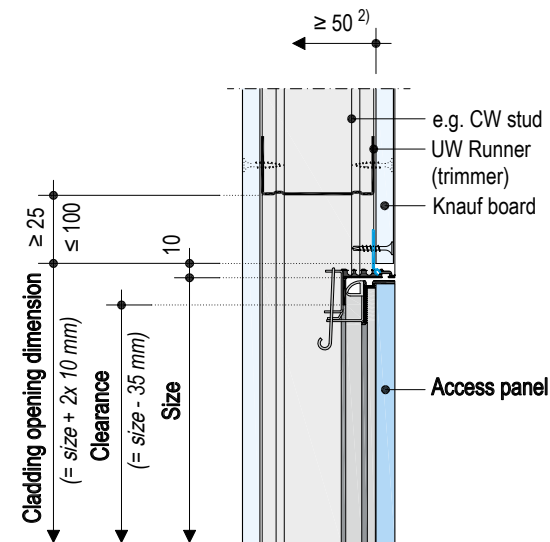
e.g. version 12.5 mm



1) Clearance to basic ceiling / installations

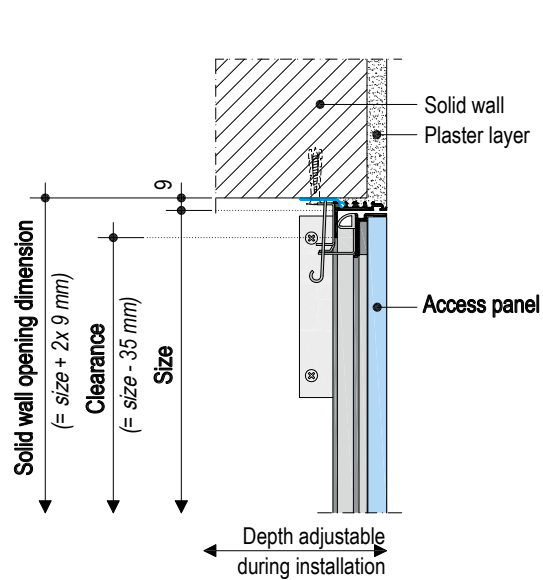
E141.de-V2 F-TEC Airtight / Dust-proof and Smoke-proof – wall installation – vertical section

e.g. version 12.5 mm



2) Opening displacement clearance of the access panel

E141.de-V3 F-TEC Airtight / Dust-proof and Smoke-proof – solid wall installation – vertical section



Product range

Description	Dimensions mm	Weight kg/piece	Packaging unit	Material number	EAN
F-TEC Airtight / Dust-proof and Smoke-proof	300 x 300	2.5	1 piece / pack	00111934	4003982203649
	400 x 400	3.6		00111935	4003982203656
	500 x 500	5.2		00111936	4003982203663
	600 x 600	7.0		00111937	4003982203670
	700 x 700	11.1		00174289	4003982214027
	800 x 800	15.8		00174290	4003982214034
	Customized	–		00111938	4003982203946

Required specifications for ordering

- Dimension of the access panel (width x length)
- Installation, for example, in the ceiling, partition or solid wall
- Additional options / special designs

Additional options / special designs

- Intermediate dimensions
at least 300 x 300 mm,
maximum 800 x 800 mm
- Four-square bolt
- Round cylinder lock
- Lock designed for profile cylinder
- Designed for on-site creation of surface quality level Q4
- Access panel for tiling: Specify the tile dimensions (width x height), joint width, adhesive thickness, tile thickness and cladding thickness
(The exact clearance is determined by the tile format)

Note	For on-site tiling
	■ Maximum tile thickness: 7 mm
	■ Maximum area weight of the tiles: 8 kg/m ²
	■ Maximum dimension of the access panel with tiling: 600 x 800 mm



The iPad App Knauf Infothek now provides all the current information and documents from Knauf Gips KG at any time and in every location in a clear and comfortable way.

[Knauf Infothek](#)

Knauf Direct
Technical Advisory Service:

▶ knauf-direkt@knauf.de

▶ www.knauf.de

Knauf Gips KG Am Bahnhof 7, 97346 Iphofen, Germany

All technical changes reserved. Only the current printed instructions are valid. The stated information represents current state-of-the-art Knauf technology. The entire state of approved engineering rules, appropriate standards, guidelines, and rules of craftsmanship are not included herewith. These and all application instructions have to be adhered to separately by the installer. Our warranty is expressly limited to our products in flawless condition. All application quantities and delivery amounts are based on empirical data that are not easily transferable to other deviating areas.

All rights reserved. All amendments, reprints and photocopies, including those of excerpts, require our expressed permission.