

K811.bg Vidiwall

Description, Sizes of the Boards, Field of Application, Installation, Technical Properties
Joint Technique, Surface Treatment

Composition

The Vidiwall gypsum fibreboards are composed of high quality calcinated gypsum and selected paper fibers.

Special properties

- Versatile application
- Robustness
- Moisture resistance
- Easy installation
- Optimum fire and sound protection

European Norms

- European Technical Approval ETA-07/0086, issued DIBT, Berlin on 23.03.2018.
- EN 15283-2 Gypsum fiber boards. Definition, requirements and test methods

Vidiwall board dimensions

Thickness*:	10 / 12.5 / 15 / 18 mm
Width*:	1000 / 1200 / 1250 mm
Length*:	1500 / 2000 / 2650 / 2750 / 2800 /3000 mm

*Other sizes available upon agreement

The Vidiwall boards are produced with differently shaped edges depending on the joint technique.

Edge shape:

SK	
FK	
VTF	

The boards can be ordered in various combinations of the above listed shapes of the edge on request.

Weight of the Boards

10 mm	11.80 kg/m ²
12.5 mm	14.75 kg/m ²
15 mm	17.70 kg/m ²
18 mm	21.24 kg/m ²

Field of application

- Metal stud partitions, ceilings
- Solutions for sound protections
- Fire protection claddings
- Timber prefabricated houses – as cladding to the wall structures and for reinforcing of the building
- Drywall partitions in humid areas

for more information see technical data sheet W36

Storage

Knauf Vidiwall boards must be stored on a flat surface in a dry environment.

Application

Formatting

To cut fibreboards score one side with a knife and snap the board along the score. Cut edge can be smoothed with bevel plane. Clean the dust before application at glued joint.

Clean edges can be cut also with electric or circular saw (dust absorber is recommended).

Fixing with screws

Align the Vidiwall fibreboard along the profiles CW, UW, CD, UD and fix with fibreboard screws. For single layer cladding use screws 3,9x30 mm, for double layer cladding use screws 3,9x45 mm. Screws spacing to be max. 250 mm. By horizontal application the screw spacing must be max. 150 mm for 10 mm thick boards, and 200 mm for 12,5 mm thick boards.

Fixing to timber

Vidiwall fibreboards can be fixed to timber structures through screws, nails or clamps with corrosion protection covering. Clamps can also be used for fastening of the second layer of boards to the first one or board to board to form a box-like cladding.

Technical data

Density : 1000 ÷ 1250 kg/m³
 Thermal conductivity: $\lambda \leq 0.30$ W/mK
 Water diffusion resistance coefficient: $\mu = 21$
 Fire classification acc. to EN 13501-1 non-combustible: A2-s1, d0

Deviation in dimension: 0.30 mm/m
 (acc.to EN 318 deviation in relative air moisture 30%)

Bending strength: $f_{m,k} = 4.5$ N/mm²
 Compressive strength: $f_{c,k} = 7.5$ N/mm²
 Tensile strength: $f_{t,k} = 2.3$ N/mm²
 Modulus of elasticity: $E = 3900$ N/mm²

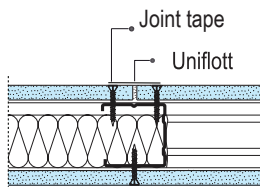
Joint Technique

SK and FK edge

Apply Vidiwall fibreboards with SK edge with a gap of 5-7 mm between boards. Fill the gap with Uniflott. Boards with FK edge are installed without a gap. Always apply some of the joint filler along the joint, so that the jointing tape would be embedded into it.

The joints of the first layer are only filled in case of multilayer claddings, while the joints of the final layer are also finely skimmed.

Remove uneven spots by hand or pole sander. Cover the screw heads with Uniflott.

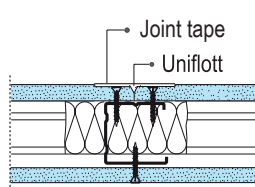


VTF joint

Apply Vidiwall fibreboards pressed tightly to each other. Apply Uniflott in the beveled edge and embed joint tape into it.

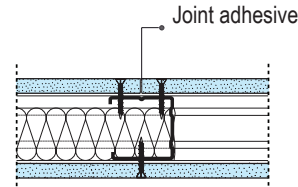
The joints of the first layer are only filled in case of multilayer claddings, while the joints of the final layer are also finely skimmed.

Remove uneven spots by hand or pole sander. Cover the screw heads with Uniflott. Sand after the joint filler has dried.



Glued joint with Vidiwall Fugenkleber

Fix the Vidiwall board on the structure and apply joint adhesive on its edge. Press the next board tightly to the first one and fix with screws or clamps. The width of the joint should not exceed 1 mm. Remove the excessive adhesive with a spatula within an hour.



Surface Treatment

Coats

Use a primer on Vidiwall boards before coating or painting them. Ensure that the primer and the coat or paint are compatible.

Plasters

Always use a primer before applying cement-based plasters on Vidiwall boards.

Ceramic Tiles

Tiling on the primed surface is applied with tile adhesive. Ensure that the primer and the adhesive are compatible. Use Knauf Flächendicht in the shower area.

Note: see also W36

Tip

Before installation condition the boards to the ambient temperature and humidity. Fill the joints only when no changes in temperature or humidity are expected, which could cause expansion or contraction of the boards.

Joints should be filled at a minimum temperature of +10°C (50°F).

Always apply paper joint tape in critical areas.

Prime the Vidiwall surface before application of finishing material.

The primer and the coat or paint must be compatible.

Phone: 0 700 300 03

Fax: +359 2 / 850 21 94

www.knauf.bg;
 www.knauf-gipsfaser.com
 info@knauf.bg

The constructional and structural properties and characteristic building physics of Knauf systems can solely be ensured with the exclusive use of Knauf system components or other products explicitly recommended by Knauf.

Knauf Bulgaria EOOD, Angelov vrach str. 27, 1618 Sofia, Bulgaria, tel.: +359 0700 300 03, fax: +359 2 850 21 94

All technical changes reserved. Only the current printed instructions are valid. Our warranty is limited exclusively to our products in flawless condition. All application quantities and delivery amounts are based on empirical data that are not easily transferable to other deviating areas. The stated information represents current state-of-the-art Knauf technology. The entire state of approved engineering rules, appropriate standards, guidelines, and rules of craftsmanship are not included herewith. These and all application instructions have to be adhered to separately by the in-staller. All rights reserved. All amendments, reprints and photocopies, including those of excerpts, require the express permission of Knauf Bulgaria EOOD.