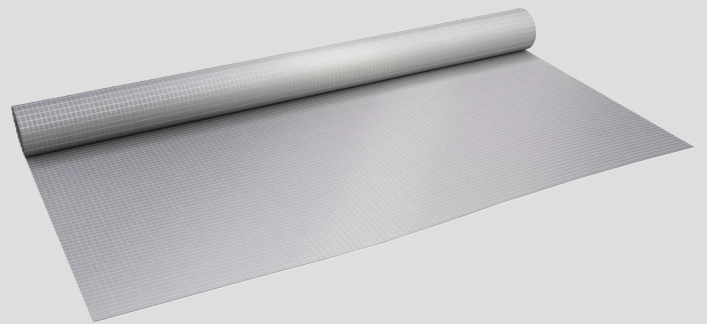


KNAUFINSULATION

**Homeseal LDS 200
ALUPLUS**

Build on us.



Product Description

Reinforced vapour control membrane made of multilayer polyethylene sheet with a tear-resistant mesh with heat reflective aluminized surface, with a Sd value of 200 m, compliant with EN 13984.

Homeseal LDS 200 ALUPLUS

SPECIFICATIONS

Water vapor permeability; Sd value (EN ISO 1931)	200 m (±60 m)
General Product Standard	EN 13984
Certification	Declaration of Performance
Thickness (EN 1849-2)	200 m (+50 m)
Reaction to fire (EN 13501-1)	E
Tensile Strength (EN 12311-2)	230 (L) / 230 (T) N/50 mm
Tear resistance (EN 12310-2)	110 (L) / 110 (T) N
Roll width	1.5 m
Roll length	50 m
m2/roll	75 m2



Applications

For use as a vapour control layer and air tight membrane in timber frame construction. Designed to be used in combination with the components of the Homeseal system. Recommended solution for pitched roofs and external wall applications from the inside. It is commonly used with drywall and within roof construction.

Resistance of the material combinations to ageing

Properly performed adhesions with certified system components are highly resistant to ageing and meet the requirements of ETAG 007 (Guideline for European Technical Approval of timber building kits)

Instructions for use

Please observe the relevant installation guidelines and information provided within the packaging guidance icons. In addition, the relevant standards and recognised rules of technology apply.

Storage

Rolls should be stored on a pallet and protected from direct sunlight, rain and snow. The product does not proceed during correct storage. Do not stack pallets or rolls during transport or storage.

All rights reserved, including those of photomechanical reproduction and storage in electronic media. Extreme caution was observed when putting together and processing the information, texts and illustrations in this document. Nevertheless, errors cannot quite be ruled out. The publisher and editors cannot assume legal responsibility or any liability whatever for incorrect information and the consequences thereof. The publisher and editors will be grateful for improvement suggestions and details of possible errors pointed out.

Knauf Insulation S.A.

Evripidou 10, Kallithea 176 74, Greece, Tel: +30 211 710 7007, sales.gr@knaufinsulation.com