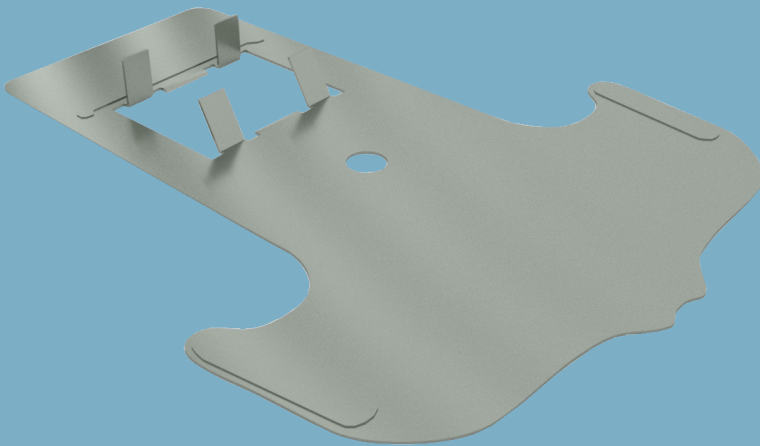


Channel Intersection Connector (Single)

Technical Data Sheet 12/2023



Channel Intersection Connector (Single)

Connector element

Product Description

Components used for connecting the main and furring ceiling C channels in two steps.

Storage

- Direct contact with water should be avoided.
- Packages should be stored in flat, dry and clean areas.

Standards referred to

-

Fields of Application

- Suspended Ceiling Systems

Properties

- Clean and easy installation

Channel Intersection Connector (Single)

Connector element



Technical Data

Description	Thickness (mm)	Weight (kg/pcs.)	Packaging Unit (pcs./pallet)	Standard	Material Number
Channel Intersection Connector - TC 60 / 27	0,8	0,019	1000	-	711186
	0,7	0,03	1000		141240
Channel Intersection Connector - TC 49 / 15 (Optimum)	0,7	0,015	500		147762

System Performance Values

Performance values as sound insulation, fire resistance etc. may differ acc. to the drywall system to be applied. Please check the performance values of the drywall systems;

[Knauf Technical Website](#)
[Document Center](#)

Application

Application should be done acc. to the applicable standards (TS 1475) and acc. to the Knauf Technical Brochures of the respective drywall system.

▶ 444 YAPI - 9274

▶ www.knauf.com.tr / www.teknik.knauf.com.tr

▶ teknik@knauf.com

Center: Knauf Moment Beştepe Office, Beştepe Mah. 32.Cadde No:1/212-218 06560 Beştepe-Yenimahalle
/ ANKARA Tel: 0312 297 0100 Faks: 0312 266 4506