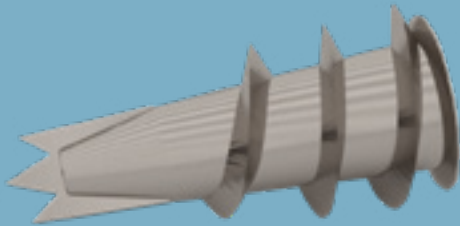


## Driva TP12 Gypsum Board Dowel

Technical Data Sheet 12/2023



# Driva TP12 Gypsum Board Dowel

## Dowel

### Product Description

Self drilling dowell anchored in one layer gypsum board for carrying console loads like paintings, radiators etc.

- Load bearing capacity 6,5 kg on ceilings
- Load bearing capacity 18 kg on walls

### Referans Standart

EN 14566

### Fields of Application

- Console loads on partition walls
- Console loads on suspended ceilings
- Console loads on wall cladding

### Properties

- Clean and easy installation

**Technical Data**

Description	Diameter (mm)	Length (mm)	Thickness (mm)	Weight (kg/box)	Standard	Packaging Unit (pcs./box)	Material Number
Driva TP12 Gypsum Board Dowel	13	35	12,5	0,65	EN 14566	100	159752

## System Performance Values

Performance values as sound insulation, fire resistance etc. may differ acc. to the drywall system to be applied. Please check the performance values of the drywall systems;

[Knauf Technical Website](#)  
[Document Center](#)

## Application

Application should be done acc. to the applicable standards (TS 1475) and acc. to the Knauf Technical Brochures of the respective drywall system.

▶ 444 YAPI - 9274

▶ [www.knauf.com.tr](http://www.knauf.com.tr) / [www.teknik.knauf.com.tr](http://www.teknik.knauf.com.tr)

▶ [teknik@knauf.com](mailto:teknik@knauf.com)

Center: Knauf Moment Beştepe Office, Beştepe Mah. 32.Cadde No:1/212-218 06560 Beştepe-Yenimahalle  
/ ANKARA Tel: 0312 297 0100 Faks: 0312 266 4506