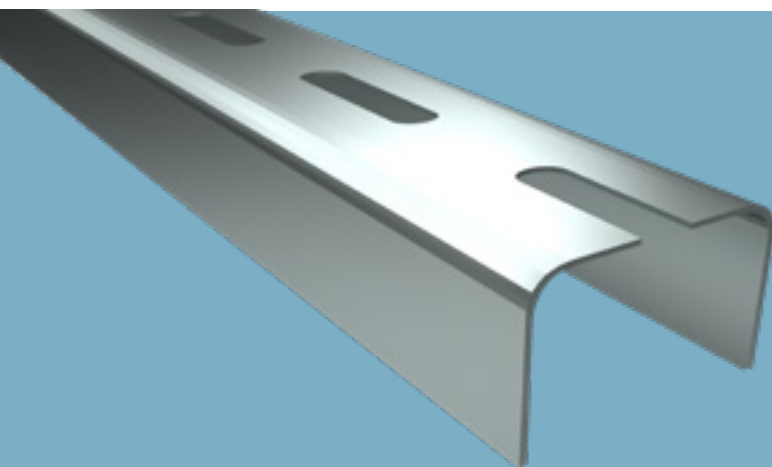


## UA Profile

Technical Data Sheet 12/2023



# UA Profile

## Profile

### Product Description

Thick load bearing profile used in partition walls at door and window edges and Aquapanel® facades.

### Storage

- Profiles are tied and packed on pallets.
- Direct contact with water should be avoided.
- Packages should be stored in flat, dry and clean areas.

### Standards referred to

TS EN 14195

### Fields of Application

- Partition Wall Systems
- Suspended Ceiling Systems
- Hanger free suspended ceilings

**Technical Data**

Description		Thickness (mm)	Weight (kg/m)	Width (mm)	Flange (mm)	Length (mm)	Packaging (pcs.)	Material Number
UA Profile	UA50	2	1,905	48,8	40/40	3000	6	3345
	UA75		2,296	73,8				3355
	UA100		2,686	98,8			4	3364

### System Performance Values

Performance values as sound insulation, fire resistance etc. may differ acc. to the drywall system to be applied. Please check the performance values of the drywall systems;

[Knauf Technical Website](#)  
[Document Center](#)

### Application

Application should be done acc. to the Knauf Technical Brochures of the respective drywall system.

▶ 444 YAPI - 9274

▶ [www.knauf.com.tr](http://www.knauf.com.tr) / [www.teknik.knauf.com.tr](http://www.teknik.knauf.com.tr)

▶ [teknik@knauf.com](mailto:teknik@knauf.com)

Center: Knauf Moment Beştepe Office, Beştepe Mah. 32.Cadde No:1/212-218 06560 Beştepe-Yenimahalle  
/ ANKARA Tel: 0312 297 0100 Faks: 0312 266 4506