



## PRODUCT GUIDE

High performance commercial insulation for India

Effective 1st March 2026



REDUCES ENERGY BILLS



MADE WITH RECYCLED GLASS



LOW CARBON



NON COMBUSTIBLE



THERMAL PERFORMANCE



ACOUSTIC PERFORMANCE



SOFT HANDLING



FREE FROM HARMFUL INGREDIENTS



**Build on us.**

# **INSULATION WITHOUT COMPROMISE**

**The world demands more from buildings.  
You should demand more too.**

Insist on insulation without compromise.

**Products that do more while using less.**  
Not just thermal comfort, but contributing to fire safety, sustainability, environmental health and peace and quiet too.

**The complete package.**  
Not just high-performance products, but a service offering that supports every stage to make quality construction easier.

**Global expertise, delivered locally.**  
The best of insulation innovation, but customised to specific country and customer needs.

**For insulation without compromise,  
choose Knauf Insulation.**

**Build on us.**

## **Contents**

<b>1. Introduction to Knauf Insulation</b>	
1.1 Innovation and Production .....	4
1.2 Why Knauf Insulation Glasswool? .....	5
1.3 Features and Benefits of Knauf Insulation Glasswool .....	6
1.4 A New Vision of Sustainability .....	8
1.5 The ECOSE® Difference .....	10
1.6 DriTherm® Technology.....	12
<b>2. Service Guidelines &amp; Ordering Options .....</b>	<b>14</b>
<b>3. Certifications .....</b>	<b>15</b>
<b>4. Products</b>	
4.1 Knauf Insulation Internal Partition range.....	18
4.2 Earthwool® Metal Roofing roll (Unfaced).....	20
4.3 Earthwool® Metal Roofing roll (Faced).....	22

# 1.1 Innovation and Production

*Made possible by the largest and most advanced manufacturing facility in Asia-Pacific.*

Knauf Insulation is one of the largest insulation manufacturers in the world with over 40 factories worldwide, and the most advanced insulation manufacturing facility is right here in Asia-Pacific.

## Meeting the demand

Using German technology with decades of experience in insulation manufacturing, the €120 million state-of-the-art facility located in Johor, Malaysia produces up to 75,000 tonnes of insulation per year - supporting the region's soaring demand for quality insulation that offers warranted performance, sustainability and ease of handling.

## Made of innovation

The factory uses the latest Knauf Insulation proprietary technology in the manufacturing process which has allowed Knauf Insulation to build innovation into every stage of the process.

It starts with our new-generation melter that can process more grades of recycled glass and produces higher quality fibres which are bound using ECOSE® Technology, a plant-based binder that contains no added formaldehyde. Combined with TwinTech® Technology - a dual forming technique that enables thicker products for advancing building code requirements. TwinTech also ensures there is a smooth finish on both sides of the insulation for optimal product handling and appearance.

Wrapped with our advanced compression packaging process and you've got insulation products that are made of innovation from start to finish.

## Serving Asia-Pacific for over 15 years

Recognising India's unique tropical climatic conditions and specific insulation requirements, Knauf Insulation provides a range of products to suit local construction methods. Our proven solutions deliver enhanced comfort and energy efficiency in buildings across the region.

The entire product range has been customised to meet the specific requirements of residential and commercial markets in the region for new and existing buildings, ensuring compliance with the latest Malaysian Standards (e.g., MS 1525) and Green Mark standards.



# 1.2 Why Knauf Insulation Glasswool?

*At Knauf Insulation we believe you should not need to compromise on your insulation. We provide products that do more using less.*



## High Performance

- Thermally efficient for more comfortable buildings year-round.
- Reduces energy used for heating and cooling.
- Absorbs sound to minimise unwanted noise transmission through external and internal walls.
- Naturally non-combustible for optimised fire safety.



## Creating Healthier Buildings

- Made with ECOSE® Technology - unique plant-based binder with no added formaldehyde.
- Low-VOCs, certified to the highest Eurofins Indoor Air Comfort Gold standard.
- Certified by DECLARE as Red List Free - does not contain any harmful or unhealthy chemical ingredients.
- Contributing credits for well-being to Green Building Rating Systems such as the Living Building Challenge, LEED, GreenStar and WELL.



## Easier to Install

- Super-soft and easier to handle compared to traditional glasswool.
- Easy to cut to size.
- Less dust.
- Low itch.
- No odour.



## Less Transportation and Handling

- Compression packaging using Knauf Insulation technology.
- Compression ratio of up to 10:1 in terms of volume of space which can be insulated compared to the volume of the packaged product.
- Less transport required and less handling.
- Less room required for storage.

**KNAUF** Knauf Insulation is part of the Knauf Group, a global market leader in the field of sustainable lightweight construction.

■ Knauf Group

>€16bn  
turnover

41,500+  
employees worldwide

300  
plants & offices

90+  
countries



■ Knauf Insulation



>€2.5bn  
turnover



6000+  
employees worldwide



28  
plants & offices



40+  
countries

# 1.3 Features and Benefits of Knauf Insulation Glasswool

From manufacture to installation, there is innovation at every stage.



**THERMALLY EFFICIENT**

The **thermal properties** of Knauf Insulation glasswool products act as a barrier to the outside elements to limit heat loss in winter and heat gain in summer through your roofs, walls and floors. Buildings stay at a comfortable temperature all year-round.



**MADE USING RECYCLED GLASS**

Our insulation is made from **up to 80% recycled glass**. Our new generation furnace uses more grades of glass than glass furnaces, taking more waste out of our environment.



**SUSTAINABLY MANUFACTURED**

**ECOSE® Technology** is a sustainable, plant-based binder with **no added formaldehyde**. The natural, earthy brown colour comes from no added dyes or colours.



**COST SAVING**

By insulating a building properly, energy can be saved from the air-conditioning system when cooling a warm building and when heating during winter. Knauf Insulation glasswool **saves energy and saves money**.



**WATER RESISTANT**

Engineered for longevity - our **DriTherm® Technology boasts silicone treatment**, designed to resist moisture, particularly important in humid climates.



**NON-COMBUSTIBLE**

Knauf Insulation glasswool is certified as **non-combustible** and will not contribute to fire spread.



**RIGIDITY**

Offering higher rigidity, making it easier for installers to handle during installation. **Manufactured with TwinTech® Technology**, an innovative process which gives the insulation a smooth finish on both sides.



**LOW VOCs**

Knauf Insulation glasswool is supported by **Eurofins Indoor Air Comfort Gold** certification as an 'outstanding material' with low levels of VOCs (Volatile Organic Compounds) according to Indoor Air Quality Emissions certification.



**EASY TO HANDLE**

Our insulation is **super-soft, making it easier to handle and install**. There's no odour, less dust and less itch than traditional glasswool insulation.



**SOUND ABSORBING**

Knauf Insulation glasswool products will improve the **acoustic performance** of the building in which they have been installed by absorbing the transfer of unwanted noise from external sources and between adjoining rooms, helping create peaceful and quiet buildings.



**COMPRESSION PACKED**

Our industry leading **compression packaging technology** enables us to compress our insulation with up to 10:1 ratio in terms of volume of space which can be insulated compared to the volume of the packaged product. This means less handling, less storage space, less packaging used and less transport.



**NO HARMFUL INGREDIENTS**

Knauf Insulation products have been awarded the Declare Red List Free label, where 100% of the ingredients are disclosed and **do not contain any Red List chemicals**.



# 1.4 A New Vision of Sustainability

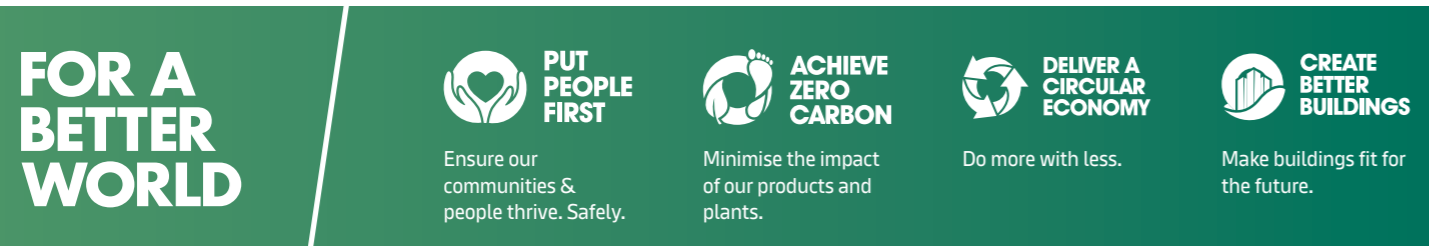
At Knauf Insulation, sustainability is at the heart of everything we do. This is why we have embedded sustainability across our products, operations, and business strategy. Our products reduce energy usage, harmful emissions, and are designed to make sure buildings are good for both people and the planet.

**We are focused on zero harm, reducing our energy use and emissions, recycling our production waste, incorporating circular economy principles and constantly campaigning for better and more sustainable buildings.**

- 2009**  
We launched our unique plant-based binder, ECOSE® Technology
- 2010**  
We set 2020 targets for the reduction of waste, energy use, carbon emissions and Lost Time Accidents
- 2014**  
We reduced our waste to landfill by 50%
- 2015**  
We achieved our 2020 target of cutting water discharge by 50%
- 2016**  
We achieved our -20% CO<sub>2</sub> emissions and -20% energy use
- 2018**  
We aligned with the UN Sustainable Development Goals



- 2020**  
We launched our **For A Better World** strategy
- 2025**  
We work towards achieving mid-term targets towards our long term goals



- 2032**  
We aim to achieve our For A Better World targets:



\*Scope 1 emissions are direct emissions made by Knauf Insulation.  
 Scope 2 emissions are indirect emissions released by the generation of energy purchased by Knauf Insulation.  
 Scope 3 emissions are indirect emissions made during inbound and outbound activities of the company.

# Embedding Sustainability into our Products



## RAW MATERIALS Conserving natural resources

Our glasswool insulation contains up to 80% recycled glass, minimising the need for virgin materials. Made using natural raw materials that are rapidly renewable, our ECOSE® Technology binder is up to 70% lower in upfront carbon than traditional binders.



## MANUFACTURING Reducing the environmental impact of our own processes

We maintain high-quality standards and prioritise the environment, achieving ISO 9001, ISO 14001 and ISO 50001 certifications. We minimise waste, recycle extensively, and aim for zero waste to landfill.



## PACKAGING Maximising our packaging to minimise our carbon footprint

Our compression technology maximises packaging efficiency, reducing total packaging required, reducing overall storage space and making it easier to handle products on site. We are also improving the recycled content in our packaging and reducing our carbon footprint.



## DISTRIBUTION Delivering product efficiently

We deliver our products with compression packaging, which reduces the number of trucks on the road, less carbon emissions, and further decreases transport-related storage space.



## BUILDING Creating high performance, comfortable & healthy building environments

Our glasswool products have been awarded the Eurofins Indoor Air Comfort Gold Certificate, demonstrating their low levels of Volatile Organic Compounds (VOCs) for improved indoor air quality. They are also formaldehyde free, as demonstrated by our Declare Red List Free certification.

# 1.5 The ECOSE® Difference



Since 2009, all of our glasswool products have been manufactured with ECOSE® Technology, a unique plant-based binder that creates an environmentally superior product.

### Make the ECOSE® difference

#### Low carbon for better buildings

Our products made with ECOSE® are free of harmful materials known to pose serious health risks and have been awarded the DECLARE 'Red List Free' label, the first glasswool products in Australia to achieve this status. Our products were also the first to be awarded the Eurofins Indoor Air Comfort Gold certification, the highest standard possible, showcasing compliance with low-VOCs emission requirements.

### Breathe the ECOSE® difference

#### Low VOC for improved indoor air quality

Compared to traditional binders, ECOSE® has a lower upfront carbon footprint as it is predominantly plant-based and is made from rapidly renewable sources, making it a low-carbon binder and reducing the embodied carbon of our products that use it. This improves the embodied carbon and overall sustainability of buildings where our glasswool products with ECOSE® are incorporated, assisting in the creation of lower carbon buildings.

### Trust the ECOSE® difference

#### 15 years of proven performance for better buildings

For more than 15 years, ECOSE has been making a difference. Products made with ECOSE meet some of the most stringent International standards, helping create better buildings for occupiers, installers and for the planet.

### Feel the ECOSE® difference

#### Easier to handle for a better experience

With no added harmful chemicals, glasswool with ECOSE® generates very low levels of dust, making it soft to touch and handle, odourless and significantly improves the installer experience. Our customers regularly tell us that our products with ECOSE® are less itchy and irritating compared to other products with traditional binders. No added dyes or artificial colours ensures a distinctive, natural brown colour that differentiates our glasswool insulation from the rest.



Traditional Non-ECOSE® glass mineral wool insulation



With ECOSE®



# 1.6 DriTherm® Technology

Knauf Insulation uses a unique technology called **DriTherm®** in the manufacture of glasswool insulation for India's commercial market sector.

## What is DriTherm Technology?

DriTherm Technology is an innovative manufacturing process developed by Knauf Insulation, designed to protect each fibre throughout the product and deliver exceptional water-repellent performance. This advanced technology prevents water absorption and maintains thermal efficiency, even when exposed to humidity or used in high-moisture environments. By integrating water-repellent functionality directly into the fibres, DriTherm Technology offers long-term durability and reliability, making it an ideal solution for construction projects where moisture exposure is a concern. It ensures stable insulation performance during installation in humid climates, meeting building standards and contributing to the creation of energy-efficient indoor spaces.

## Why it matters

Conventional glasswool can absorb moisture, which reduces thermal efficiency and leads to long-term issues. DriTherm prevents this by repelling both liquid water and vapour, allowing the insulation to preserve its performance over time.

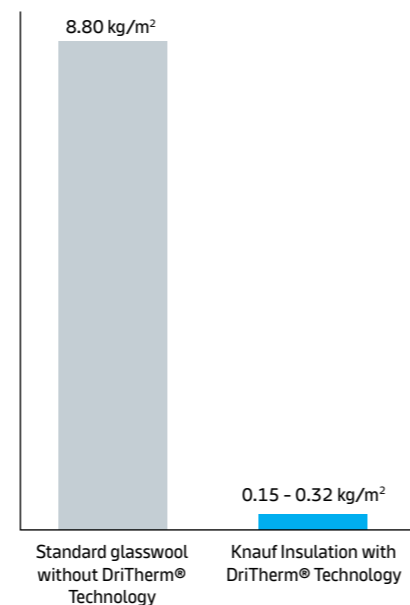
## Performance and testing criteria

To meet the demands of moisture-prone environments, DriTherm Technology must deliver performance proven under internationally recognised standards:

Test	Test Standard	DriTherm® Technology
Short-Term Water Absorption (24 hrs)	ISO 29767 ≤ 1.0 kg/m <sup>2</sup>	✓ <b>Pass:</b> 0.15 – 0.32 kg/m <sup>2</sup>
Long-Term Water Absorption (28 days)	ISO 16535 ≤ 3.0 kg/m <sup>2</sup>	✓ <b>Pass:</b> ≤ 1.00 kg/m <sup>2</sup>
Water Vapour Absorption	ASTM C1104 ≤ 5%	✓ <b>Pass:</b> 3% (95% RH, 96 hours)
Long-Term Thermal Conductivity Test	2 years outdoor exposure in tropical climate	✓ <b>Pass:</b> No performance degradation

## Short term water absorption testing to ISO 29767

Amount of water absorbed in 24 hours (kg/m<sup>2</sup>)  
Pass = ≤ 1.00 kg/m<sup>2</sup> (Knauf Insulation testing)



# BENEFITS



## Fibre-level water-repellence

Unlike surface treatments, our silicone additive is embedded into each fibre, ensuring consistent and reliable water-repellency throughout the insulation. This performance remains uncompromised, even after cutting or handling.



## Plant-based ECOSE® binder advantage

Glasswool made with ECOSE® Technology—a plant-based binder free from added formaldehyde—complements DriTherm® Technology by delivering superior water-repellency. It ensures safety in schools, hospitals, and green buildings while promoting cleaner air and sustainability.



## Maintains performance under moisture

DriTherm Technology protects thermal and acoustic insulation by preventing moisture from displacing air within the fibres. This ensures consistent performance and reliability, even in high-humidity environments.



## High performance at low density

DriTherm delivers superior water-repellency from 1.6 kg/m<sup>3</sup>, thanks to its silicone fibre treatment. Its lightweight design enhances handling, simplifies installation, and reduces both material and transport costs.



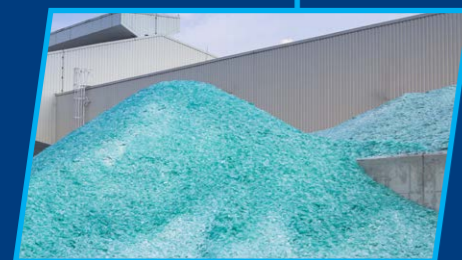
## Proven long-term durability

DriTherm Technology maintains thermal and acoustic performance by repelling water, mould, and humidity. Its durability ensures longevity, lowers maintenance, and reduces carbon emissions—making it a sustainable, cost-effective solution.

# How it works

The water-repellent additive is applied during production and becomes an integral part of each fibre. Unlike surface-coated alternatives, this ensures consistent repellence throughout the product—before, during, and after installation. Combined with our formaldehyde-free, ECOSE® binder, DriTherm offers durability, safety, and lasting protection.

**DriTherm is applied during Knauf Insulation's glasswool manufacturing process:**



## 1. Raw Material Input

Natural and abundant raw materials, including up to 80% recycled glass.



## 2. Melting

Raw materials are melted at approximately 1,400°C to form liquid glass.



## 3. Fibre Formation

Fine insulation fibres are created using high-speed spinning nozzles.



## 4. Binder and DriTherm Application

The ECOSE plant-based binder and DriTherm water-repellent technology are applied simultaneously, becoming integrated into the fibres.



## 5. Curing

Fibres pass through an oven for heat curing, fixing strength and water-repellent properties.



## 6. Cutting and Packaging

Insulation is cut to customer specifications and compressed for efficient transport, reducing carbon emissions.

## 2. Service Guidelines & Ordering Options

### Pack

- Single package of batts or roll
- Bound together by a MasterBag



### MasterBag

- A MasterBag is a package of multiple packs (3, 4 or 5 packs depending on the product)



### SupaKube

- A 'cube' approximately 1200mm x 1200mm x 2400mm of one product type stacked in multiple MasterBags



As part of our ongoing commitment to exceptional Customer Service, deliveries are available in Full Container Load (FCL) shipments.

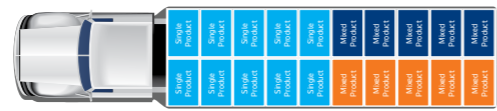
### FCL

### Full Container Load

A Full Container Load (FCL) order is up to 20 SupaKubes of single or mixed products delivered in a 40-foot container with a lead time of 4-6 weeks.



Elevation view



Plan view

To help ensure a seamless and efficient ordering experience, the following guidelines are provided:

- Product Calculator:** This is available to assist in calculation for quantity of product contained in a Full Container Load.
- Unloading Responsibilities:** It is the responsibility of the customer to unload the trucks and containers in a timely manner.
- Order Confirmations and Invoices:** All orders must be accompanied by a formal Purchase Order. We will provide a written confirmation of your order. We ask that you check all order confirmation details you receive carefully as they will reflect what appears on the invoice you receive. We ask that any queries you may have are immediately directed to our Customer Service team. Should you have any queries regarding your invoice or any fees you must contact us within 48 hours of its receipt.
- Cancellation of your Order:** All orders become confirmed upon the issuance of purchase orders. Should you wish to cancel or initiate a return, please contact our customer service department. Fees will apply.
- Customer Service and Sales:** Information regarding your orders and details of dispatch can be obtained from Customer Service between the hours of 8.30am - 5pm, Monday to Friday.

- Technical Advisory Centre:** Knauf Insulation provides comprehensive technical support to assist insulation stockists, specifiers and users. Our expert staff will be pleased to provide further information and advice on all aspects of Knauf Insulation products and applications.

Email: [info.in@knaufinsulation.com](mailto:info.in@knaufinsulation.com)

### Other enquiries

Our website [www.knauf.com](http://www.knauf.com) hosts a wealth of product and company information, if you can't find what you are looking for and need some general assistance use the contact details provided.

### Contact

Monday - Friday | 8.30am - 5pm (MYT)

+60 7-838 1000

[orders.in@knaufinsulation.com](mailto:orders.in@knaufinsulation.com)

## 3. Certifications

Knauf Insulation glasswool products meet stringent performance standards and are certified by industry recognised entities to give confidence for use in buildings.

### ENHANCED QUALITY ASSURANCE



#### ISO 9001: QUALITY MANAGEMENT CERTIFICATION

All of our products are made within the ISO 9001 quality management system ensuring that we deliver consistent performance, quality and service across our entire product range.



#### MS SIRIM

Our products are certified by the Malaysian certification, inspection and testing body which demonstrates our products meet the mandatory quality and safety benchmarks required for regulatory compliance.



#### ILAC MUTUAL RECOGNITION ARRANGEMENT

Knauf Insulation's laboratory in our APAC manufacturing facility is accredited under the ILAC Mutual Recognition Arrangement (ILAC MRA), demonstrating its technical competency in accordance with MS ISO/IEC 17025:2017.

This accreditation ensures the consistent delivery of technically valid test results and calibrations from the laboratory.

### ENHANCED FIRE SAFETY



#### CERTIFIED NON-COMBUSTIBLE TO MS/BS 476 PART 4

Independent third-party certification provides added assurance for building designers, ensuring compliance with Jabatan Bomba dan Penyelamat Malaysia's (BOMBA) fire safety requirements and enhancing the fire safety of their buildings.

### BIO-SOLUBLE AND SAFE TO USE



#### EUCEB CERTIFIED

All of our products are EUCEB certified demonstrating that they are bio-soluble and are safe to use.



#### ISO 45001: OH&S MANAGEMENT

All of our products are manufactured in accordance with the ISO 45001 Occupational Health & Safety Management system, demonstrating our commitment to worker health & safety.



To learn more about product certification, scan the QR code or visit [knauf.com](http://knauf.com)

### NO HARMFUL CHEMICALS

#### Declare.



#### CERTIFIED DECLARE RED LIST FREE

The Declare label on our products demonstrates our commitment to transparency and is provided for products which declare 100% of their ingredients.

The Red List Free label confirms that no ingredients are added to our products which are on the Living Building Challenge (LBC) Red List of "worst in class" materials, chemicals and elements known to pose risks to human health.

### BEST-IN-CLASS LOW EMISSIONS FOR OPTIMUM INDOOR AIR QUALITY



#### EUROFINS GOLD CERTIFICATE FOR INDOOR AIR COMFORT

Our products have been awarded the Eurofins Gold Certificate for Indoor Air Comfort which is designed to demonstrate products with the best-in-class low levels of Volatile Organic Compound (VOC) emissions.

### LOW ENVIRONMENTAL IMPACT



#### GLOBAL GREENTAG<sup>CERT™</sup> GREENRATE<sup>™</sup> LEVEL A CERTIFIED

Knauf Insulation glasswool is the first glasswool insulation in Australia to have GreenRate<sup>™</sup> Level A certification, demonstrating they meet the toughest standards for health, eco performance and safety; and are also eligible for a range of credits within the GreenStar building rating scheme.



#### ISO 14001: ENVIRONMENTAL MANAGEMENT

All of our products are manufactured in accordance with the ISO 14001 Environmental Management system, demonstrating our commitment to minimise our impact on the environment.



#### ISO 50001: ENERGY MANAGEMENT

All of our products are manufactured in accordance with the ISO 50001 Energy Management system, demonstrating our commitment to conserving resources and minimising the impact of our processes through efficient energy management.

# NO GAPS. NO COMPROMISE.

The Friction Fit Solution for 610mm Studs.

# GET THE JOB DONE FASTER AND BETTER.



## A PERFECT FRICTION FIT, ENGINEERED FROM ON-SITE FEEDBACK.



## EDGE-TO-EDGE COVERAGE. DESIGNED FOR PERFORMANCE.



As a leader in innovation, Knauf Insulation is committed to evolving our products to meet the real-world needs of construction professionals. We listened to direct feedback from the builders, installers, and architects who use our products every day.

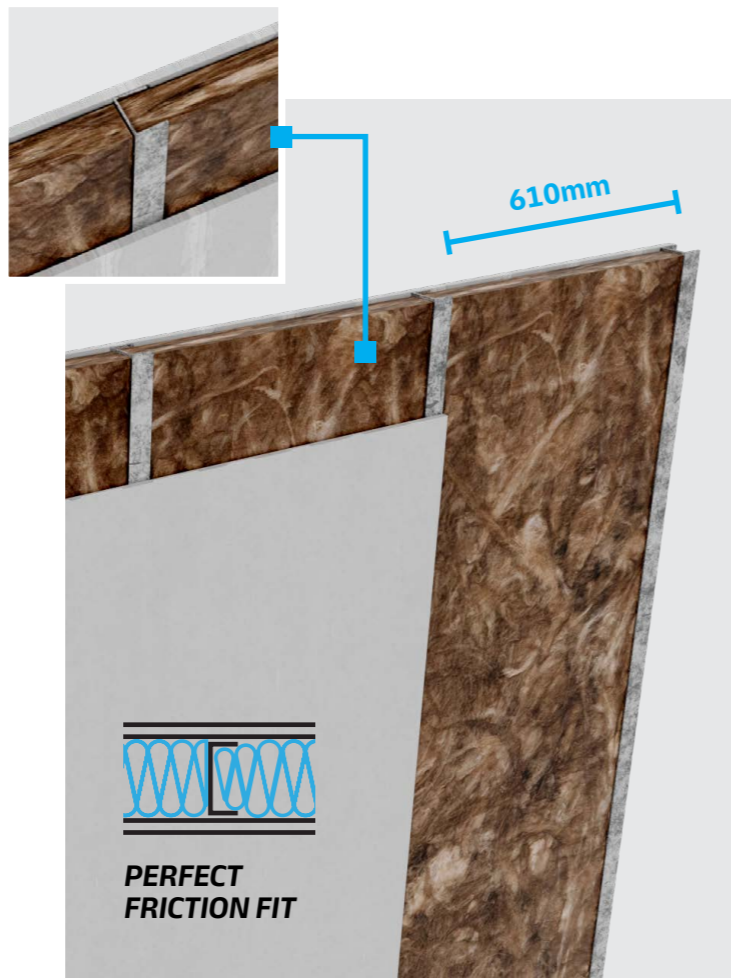
### THE OPPORTUNITY FOR INNOVATION.

In internal partition systems with specific stud layouts, aligning insulation to framing is essential to minimise thermal bridging, and maintain acoustic integrity. We saw an opportunity to create a purpose-built solution to make your job faster and more efficient.

### INTRODUCING THE 610MM FRICTION FIT SOLUTION.

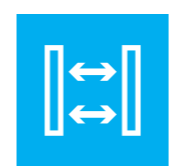
Knauf Insulation has developed a purpose-built batt designed for 610mm studs frames. This friction-fit solution installs quickly and securely, without trimming or pinning.

**This is the new standard for 610mm walls. A snug, friction fit that's built and engineered to stay.**



### THE 610MM FRICTION FIT ADVANTAGE

Knauf Insulation's 610mm partition batt is the premium, innovative solution for professionals. It's designed to friction fit perfectly within the C channels, delivering complete cavity coverage and guaranteed performance on every install.



### NO GAPS, MAXIMUM EFFICIENCY.

Achieve a perfect friction fit that eliminates pinning, trimming, and waste. The 610mm batt is engineered for 100% cavity fill, providing edge-to-edge coverage that saves significant on-site labour time and accessory costs.



### DESIGNED WITH INSTALLERS IN MIND.

Experience a faster, cleaner installation with a lightweight yet rigid batt that's easy to handle. Our ECOSE® Technology binder ensures a low-dust, low-itch experience, while the longer folded batt option means greater coverage in a single piece.



### FULL PERFORMANCE, NO COMPROMISE.

Deliver projects with confidence. The gap-free fit guarantees tested acoustic and thermal performance, eliminating bridging and meeting Green Mark standards. It's backed by the industry's most trusted certifications, including **EUCEB, ISO 9001, Global GreenTag<sup>Cert</sup>™ GreenRate™ Level A, and DECLARE 'Red List Free'**.

# 4.1 Knauf Insulation Internal Partition range



**KNAUF**INSULATION



## SPECIFICATIONS

The Knauf Insulation Internal partition (Acoustic) range includes a selection of densities to provide builders, designers, installers and DIYers the opportunity to select the most suitable product for their wall system or installation requirements. Knauf Insulation Internal partition (Acoustic) products will improve the acoustic performance of the building in which they have been installed by absorbing the transfer of unwanted sound from external sources and between adjoining rooms.



STANDARD 1200MM BATT



FOLDED 2700MM BATT

2.25 X LONGER



### BENEFITS

- ✓ Sound absorbing
- ✓ DriTherm® Technology - silicon-treated fibres have better moisture resistance
- ✓ High recycled content
- ✓ High thermal performance, year-round comfort
- ✓ Saves energy - lower energy bills
- ✓ Non-combustible
- ✓ TwinTech® - smooth finish on both sides
- ✓ No added formaldehyde - free from harmful ingredients
- ✓ Soft to handle and install
- ✓ Odourless
- ✓ Compression packed - more product per pack



### PERFORMANCE

<b>Thermal</b>	MS 1020:2022	
<b>Fire Hazard Properties (ASTM E84)</b>	Spread of Flame: 0 Smoke Developed: 0-5	
<b>Water vapour sorption (ASTM C665-17)</b>	Pass (Less than 5% by weight)	
<b>Short-term water absorption (ISO 29767:2019)</b>	<b>16 kg/m<sup>3</sup></b>	<b>32 kg/m<sup>3</sup></b>
	Pass (0.20 kg/m <sup>2</sup> )	Pass (0.15 kg/m <sup>2</sup> )
<b>Microbial Growth (ASTM C665-17)</b>	Does not support microbial growth	
<b>Corrosiveness (ASTM C665-17)</b>	Pass (Not corrosive)	
<b>Combustibility (BS 476 Part 4)</b>	Pass (Non-combustible)	
<b>Noise Reduction Coefficient NRC (ASTM C423)</b>	0.85 - 0.90	

### INTERNAL PARTITION BATT

Product Code	Density (kg/m <sup>3</sup> )	Thickness (mm)	Thermal Conductivity (W/mK)	R-Value (m <sup>2</sup> K/W)	Width (mm)	Length (mm)	Area per pack (m <sup>2</sup> )	Pieces per pack	Packs per MasterBag	Masterbags per Container
826570	16	50	0.0366	1.36	600	1,200	17.3	24	5	80
826561	20	50	0.0350	1.42	600	1,200	14.4	20	5	80
866772	24	50	0.0339	1.47	600	1,200	12.2	17	5	80
864384	16	50	0.0366	1.36	610	1,200	17.6	24	5	80
860908	20	50	0.0350	1.42	610	1,200	14.6	20	5	80
864382	24	50	0.0339	1.47	610	1,200	12.4	17	5	80

### INTERNAL PARTITION FOLDED BATT

Product Code	Density (kg/m <sup>3</sup> )	Thickness (mm)	Thermal Conductivity (W/mK)	R-Value (m <sup>2</sup> K/W)	Width (mm)	Length (mm)	Area per pack (m <sup>2</sup> )	Pieces per pack	Packs per MasterBag	Masterbags per Container
826559	16	50	0.0366	1.36	600	2,700	19.4	12	5	64



### PRODUCT FEATURES



### CERTIFICATIONS



# 4.2 Earthwool® Metal Roofing roll (Unfaced)



**EARTHWOOL®**  
the feel good glasswool insulation



## SPECIFICATIONS

Earthwool Metal Roofing roll (Unfaced) provides thermal and acoustic insulation for commercial and industrial roofs. Condensation control can be achieved when the product is faced with foil of the appropriate duty classification. The Earthwool Metal Roofing roll (Unfaced) range includes a selection of R-values to provide builders, designers and installers the opportunity to choose the best thermal performance for their project.

### EARTHWOOL METAL ROOFING ROLL (UNFACED)

Product Code	R-Value (m <sup>2</sup> K/W)	Thermal Conductivity (W/mK)	Density (kg/m <sup>3</sup> )	Thickness (mm)	Width (mm)	Length (mm)	Area per pack (m <sup>2</sup> )	Pieces per pack	Packs per MasterBag	MasterBags per Container
868897	1.36	0.0366	16	50	1,200	15,000	18.0	1	4	100
868899	1.42	0.0350	20	50	1,200	11,500	13.8	1	4	100
828902	1.47	0.0339	24	50	1,200	10,000	12.0	1	4	100
826675	1.53	0.0326	32	50	1,200	7,500	9.0	1	4	100



### BENEFITS

- ✓ Convenient roll lengths for easy install
- ✓ High recycled content
- ✓ High thermal performance, year-round comfort
- ✓ DriTherm Technology - silicon-treated fibres have better moisture resistance
- ✓ Sound absorbing
- ✓ Saves energy - lower energy bills
- ✓ Non-combustible
- ✓ No added formaldehyde
- ✓ Soft to handle and install
- ✓ Odourless
- ✓ Compression packed - more product per pack



### PERFORMANCE

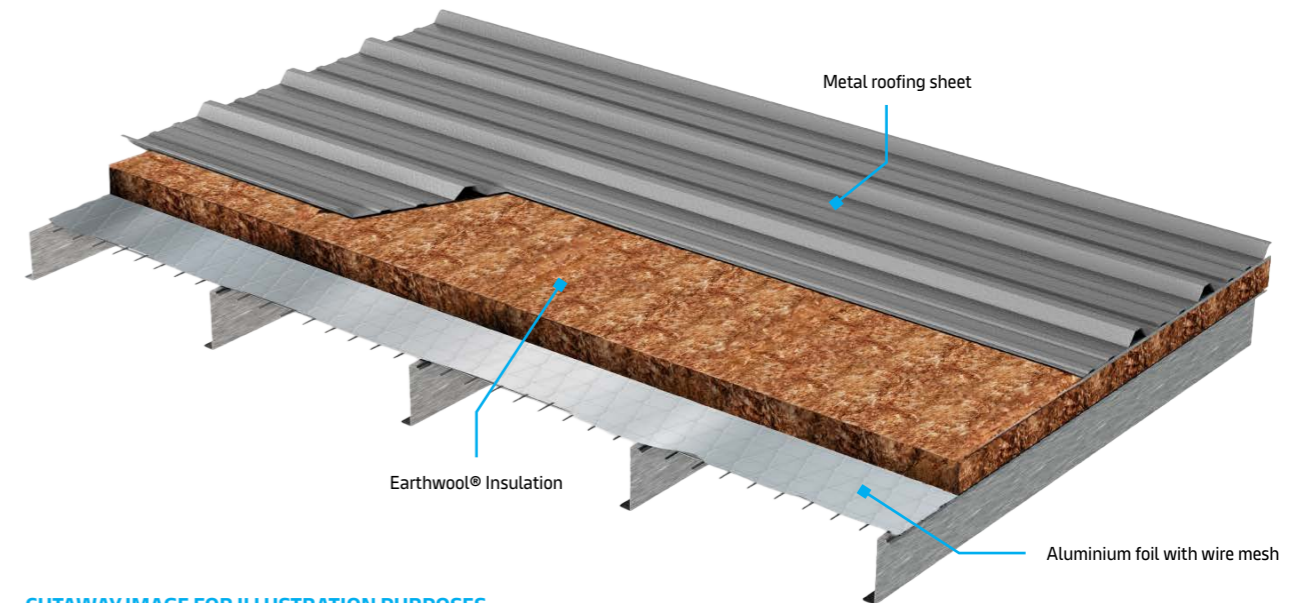
<b>Thermal</b>	MS 1020: 2022
<b>Fire Hazard Properties (ASTM E84)</b>	Spread of Flame: 0 Smoke Developed: 0-5
<b>Water vapour sorption (ASTM C665-17)</b>	Pass (Less than 5% by weight)
<b>Microbial Growth (ASTM C665-17)</b>	Does not support microbial growth
<b>Corrosiveness (ASTM C665-17)</b>	Pass (Not corrosive)
<b>Combustibility (BS 476 Part 4)</b>	Pass (Non-combustible)
<b>Noise Reduction Coefficient NRC (ASTM C423)</b>	0.85 - 0.90



### PRODUCT FEATURES



### CERTIFICATIONS



CUTAWAY IMAGE FOR ILLUSTRATION PURPOSES

# 4.3 Earthwool® Metal Roofing roll (Faced)



**EARTHWOOL®**  
the feel good glasswool insulation



## SPECIFICATIONS

The Earthwool Metal Roofing roll (Faced) range is designed for metal roofing applications, offering exceptional thermal and moisture management. Its non-perforated, 97% reflective aluminium foil facing, reinforced with fire-resistant glass scrim, serves as an effective vapour barrier when correctly taped and detailed, preventing moisture ingress and reducing the risk of condensation. This ensures efficient heat transfer control for improved indoor comfort while also reflecting visible light, making it ideal for environments requiring optimal internal lighting.

### EARTHWOOL® METAL ROOFING ROLL (FACED)

Product Code	R-Value (m²K/W)	Thermal Conductivity (W/mK)	Density (kg/m³)	Thickness (mm)	Width (mm)	Length (mm)	Area per pack (m²)	Pieces per pack	Packs per MasterBag	MasterBags per Container
868904	1.36	0.0366	16	50	1,200	13,000	15.6	1	4	100
868906	1.42	0.0350	20	50	1,200	10,500	12.6	1	4	100
868908	1.47	0.0339	24	50	1,200	9,000	10.8	1	4	100



### BENEFITS

- ✓ Class 1 Vapour Barrier (ASTM E96)
- ✓ High recycled content
- ✓ High thermal performance, year-round comfort
- ✓ DriTherm® Technology - silicon-treated fibres have better moisture resistance
- ✓ Sound absorbing
- ✓ Saves energy - lower energy bills
- ✓ Non-combustible
- ✓ No added formaldehyde
- ✓ Soft to handle and install
- ✓ Odourless
- ✓ Compression packed – more product per pack



### PERFORMANCE

<b>Thermal</b>	MS 1020: 2022
<b>Fire Hazard Properties (ASTM E84)</b>	Spread of Flame: 0 Smoke Developed: 0-5
<b>Water vapour sorption (ASTM C665-17)</b>	Pass (Less than 5% by weight)
<b>Microbial Growth (ASTM C665-17)</b>	Does not support microbial growth
<b>Corrosiveness (ASTM C665-17)</b>	Pass (Not corrosive)
<b>Combustibility (BS 476 Part 4)</b>	Pass (Non-combustible)
<b>Noise Reduction Coefficient NRC (ASTM C423)</b>	0.85 - 0.90



### PRODUCT FEATURES



### CERTIFICATIONS



## MANUFACTURED BY

### Knauf Insulation Sdn Bhd

PL0 157, Jalan Teruntum 4, Tanjung Langsat Industrial Area,  
81700 Pasir Gudang, Johor

Company registration no: 201401006359



+60 7-838 1000



info.in@knaufinsulation.com



www.knauf.com

## SPECIFIED AND DISTRIBUTED BY

### Knauf India Pvt. Ltd

9th Floor, DLF Plaza Tower,  
DLF Phase 1, Sector 26A,  
Gurugram, Haryana 122002, India



Scan to visit  
our website

© 2026 Knauf Insulation

All rights reserved, including those of photomechanical reproduction and storage in electronic media. Extreme caution was observed when putting together and processing the information, texts and illustrations in this document. Nevertheless, errors cannot quite be ruled out. The publisher and editors cannot assume legal responsibility or any liability whatever for incorrect information and the consequences thereof. The publisher and editors will be grateful for improvement suggestions and details of possible errors pointed out.

KIIN06251653BR<sup>(V1-7)</sup>

**Build on us.**