

KNAUF

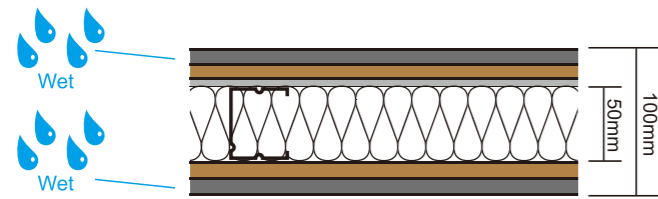
AQUAPANEL®

DENSESHIELD



**High Performance Drywall Solutions
for Wet & Dry Areas**

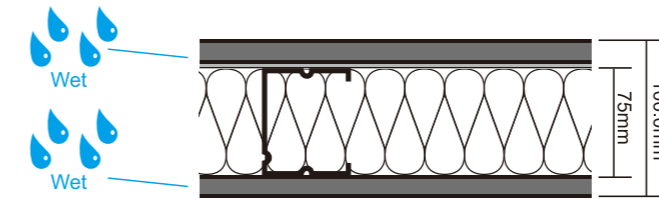
2 hrs FRP STC 53



100mm Knauf Drywall Partition System

Face layer	: 12.5mm Knauf Aquapanel
Base layer	: 12.5mm Knauf Denseshield
Metal Stud	: 50mm Metal Stud
Acoustic Infill	: 50mm Rockwool (60kg/m ³)
Base layer	: 12.5mm Knauf Denseshield
Face layer	: 12.5mm Knauf Aquapanel

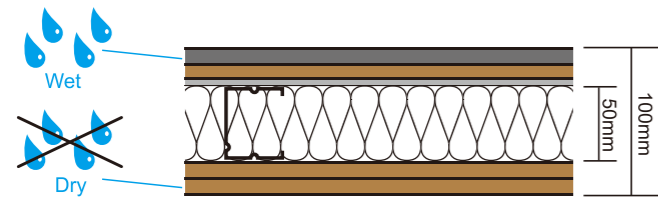
1 hr FRP STC 43



100mm Knauf Drywall Partition System

Face layer	: 12.5mm Knauf Aquapanel
Metal Stud	: 75mm Metal Stud
Acoustic Infill	: 75mm Rockwool (100kg/m ³)
Face layer	: 12.5mm Knauf Aquapanel

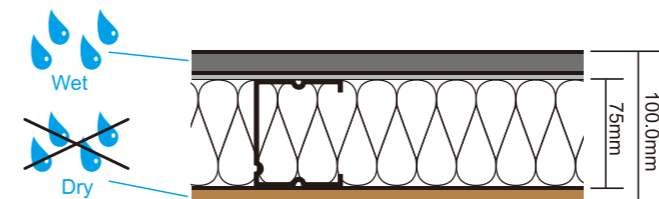
2 hrs FRP STC 54



100mm Knauf Drywall Partition System

Face layer	: 12.5mm Knauf Aquapanel
Base layer	: 12.5mm Knauf Denseshield
Metal Stud	: 50mm Metal Stud
Acoustic Infill	: 50mm Rockwool (60kg/m ³)
Base layer	: 12.5mm Knauf Denseshield
Face layer	: 12.5mm Knauf Denseshield

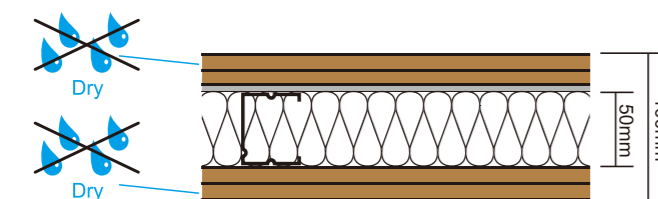
1 hr FRP STC 46



100mm Knauf Drywall Partition System

Face layer	: 12.5mm Knauf Aquapanel
Metal Stud	: 75mm Metal Stud
Acoustic Infill	: 50mm Rockwool (100kg/m ³)
Face layer	: 12.5mm Knauf Denseshield

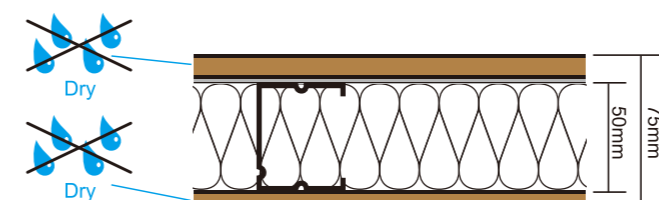
2 hrs FRP STC 55



100mm Knauf Drywall Partition System

Face layer	: 12.5mm Knauf Denseshield
Base layer	: 12.5mm Knauf Denseshield
Metal Stud	: min 50mm Metal Stud (Ref to P.3)
Acoustic Infill	: 50mm Rockwool (60kg/m ³)
Base layer	: 12.5mm Knauf Denseshield
Face layer	: 12.5mm Knauf Denseshield

1 hr FRP STC 46



75mm Knauf Drywall Partition System

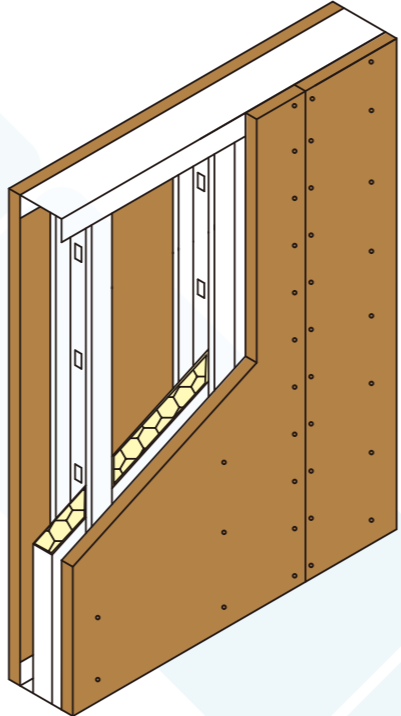
Face layer	: 12.5mm Knauf Denseshield
Metal Stud	: min 50mm Metal Stud (Ref to P.3)
Acoustic Infill	: 50mm Rockwool (60kg/m ³)
Face layer	: 12.5mm Knauf Denseshield

DENSESHIELD + AQUAPANEL® DRYWALL SYSTEM

KNAUF DENSESHIELD IMPACT RESISTANT PARTITION SYSTEM meeting "Heavy Duty" criteria of BS5234: Part 2: 1992

Technical Data:
1-Hour fire rating, integrity & insulation
according to BS476: Part22, with fire risk from both sides
Overall partition thickness = 75mm
Sound reduction Rw = 46 dB

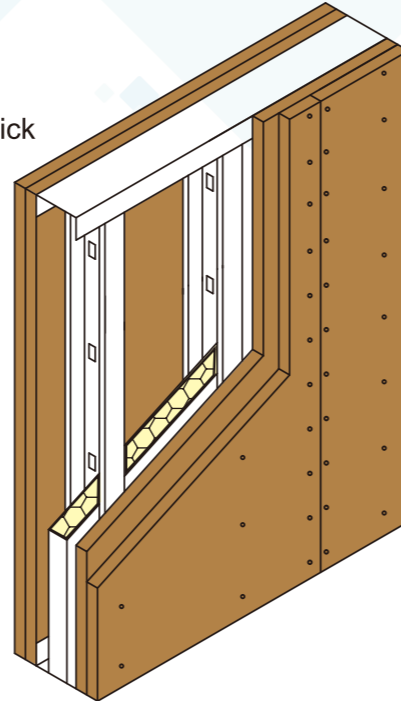
1. KNAUF Denseshield impact resistant fire rated plasterboard 12.5mm thick
2. KNAUF 50mm x 50mm x 0.6mm G.I. stud at 610mm centres
* When 75mm wide frame is used, this Denseshield partition meets the 'Heavy Duty' criteria of BS5234;Part2:1992
3. KNAUF 50mm x 35mm x 0.6mm G.I. 'U' channel
4. Nailable plug at 500mm centres
5. Knauf intumescent and acoustic sealant
6. Drywall screw at 200-400mm centres
7. 50mm thick, 60kg/cu.m, KNAUF rockwool








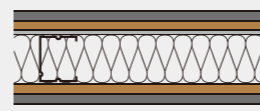
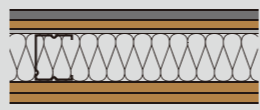
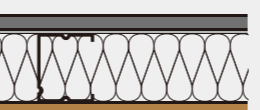
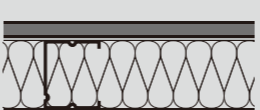
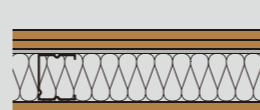
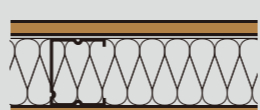


KNAUF DENSESHIELD IMPACT RESISTANT PARTITION SYSTEM meeting "Severe Duty" criteria of BS5234: Part 2: 1992

Technical Data:
2-Hour Fire rating, integrity & insulation
according to BS476: Part22, with fire risk from both sides
Overall partition thickness = 125mm
* Sound reduction Rw = 55 dB

1. KNAUF Denseshield impact resistant fire rated plasterboard 2x12.5mm thick
2. KNAUF 75mm x 50mm x 0.6mm G.I. stud at 610mm centres
3. KNAUF 75mm x 35mm x 0.6mm G.I. 'U' channel
4. Nailable plug at 500mm centres
5. Knauf intumescent and acoustic sealant
6. Drywall screw at 200-400mm centres
7. 50mm thick, 60kg/cu.m, KNAUF rockwool



Scheme Drawing	 FIRE RATING BS476 OART 22	 STC	 THICKNESS (mm)	 WEIGHT (kg/m ²)	 FRAME (mm)	 INSULATION (Rockwool)	 100% resistant Water Proof
	120	53	100	63	50x50x0.6	60kg/50mm	both side
	120	54	100	63			one side
	60	46	100	36	75x50x0.6	100kg/50mm	one side
	60	43	100	36			both side
	120	55	100	63	50x50x0.6	60kg/50mm	NO
	60	46	75	36			

Product profile:

Knauf boards offer superior performance meeting almost all performance requirements likely to be encountered in any building type or location.

The Knauf range includes:

- High Performance Fire Protection Boards (Superpanel)
 - Up to four hours fire protection
 - Superior impact resistance
- Aquapanel Cement Board Outdoor
 - No loss of strength when wet
 - External cladding
- Denseshield
 - A high impact plaster board for any high traffic areas.
- Insulations
 - Rockwool
- Accessories
 - Steel Stud/channel
 - Paper Tape
 - Screw

No asbestos content in all Knauf boards



Knauf-The Company

World leader in building product technology

Drawing from over 80 years' experience, Knauf, a major international building products group, have secured leading status in the field of gypsum and cement technology.

Leadership has been won by a combination of specialist expertise, a deep understanding of customer needs, and a record of pioneering achievement.

Knauf systems have been installed for many years both in the H.K. and around the world with proven success.

Products

- Plasterboards
- Plasters
- High Performance Fire Protection Board
- High Performance Building Boards
- Jointing compounds
- Drywall and ceiling accessories

Systems

- Wall linings
- Commercial Partitions
- Domestic Partitions
- Acoustic Ceilings
- Lift and stair enclosures
- Fire protection wall linings, partitions and ceilings

Knauf- The Responsibility

Single Source Responsibility

To ensure our clients get the best out of Knauf products, Knauf would offer system performance guarantee which goes hand in hand with our "Single Source Responsibility" strategy. Knauf supplies and guarantees the whole system. KNAUF has a policy of continuous improvement and reserves the right to change specifications, designs and products at any time without prior notice.

HONG KONG OFFICE:

TEL: (852) 2964 9311,2

FAX: (852) 2964-9313

enquiry.hk@knauf.com

www.knauf.com