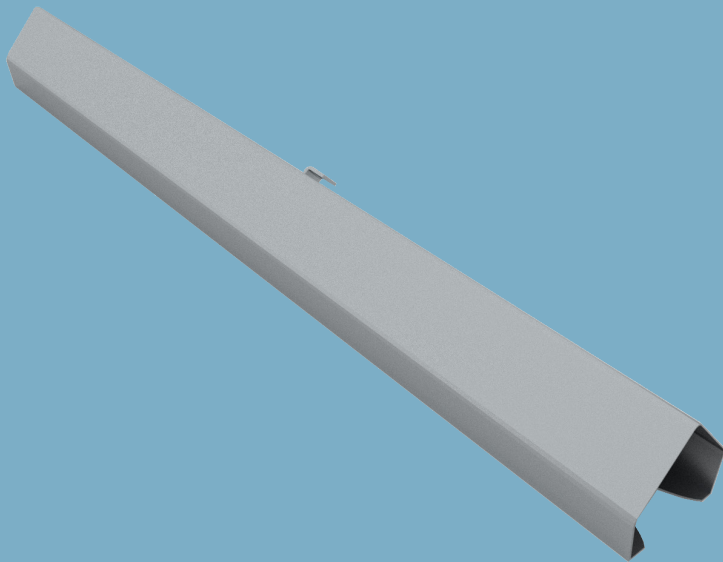


## Knauf Clip-In Type 1 Splice Bar

Technical Data Sheet 12/2023



# Knauf Clip-In Type 1 Splice Bar

Hanger element

### Product Description

Components used for extending the clip-in profiles.

### Storage

- Profiles should be kept in dry environment and direct contact with water should be avoided.
- Packages should be stored in flat, dry and clean areas.

### Standards referred to

-

### Fields of Application

- Clip-in suspended ceilings systems

### Properties

- Clean and easy installation

**Technical Data**

Description	Thickness (mm)	Weight (kg/ pcs.)	Packaging (pcs./box)	Standard	Material Number
Knauf Clip-In Type 1 Splice Bar U 91002 A	0,5	0,019	100	-	147756

### System Performance Values

Performance values as sound insulation, fire resistance etc. may differ acc. to the drywall system to be applied. Please check the performance values of the drywall systems;

[Knauf Technical Website](#)  
[Document Center](#)

### Application

Application should be done acc. to the Knauf Technical Brochures of the respective drywall system.

▶ 444 YAPI - 9274

▶ [www.knauf.com.tr](http://www.knauf.com.tr) / [www.teknik.knauf.com.tr](http://www.teknik.knauf.com.tr)

▶ [teknik@knauf.com](mailto:teknik@knauf.com)

Center: Knauf Moment Beştepe Office, Beştepe Mah. 32.Cadde No:1/212-218 06560 Beştepe-Yenimahalle  
/ ANKARA Tel: 0312 297 0100 Faks: 0312 266 4506