

# KNAUF STANDARD DETAILS

DRAWING NO: KSD25-0029



DETAIL TITLE: ISOLATOR- 50/60mm I STUD - TWIN FRAME SYSTEM, DOUBLE BOARDED

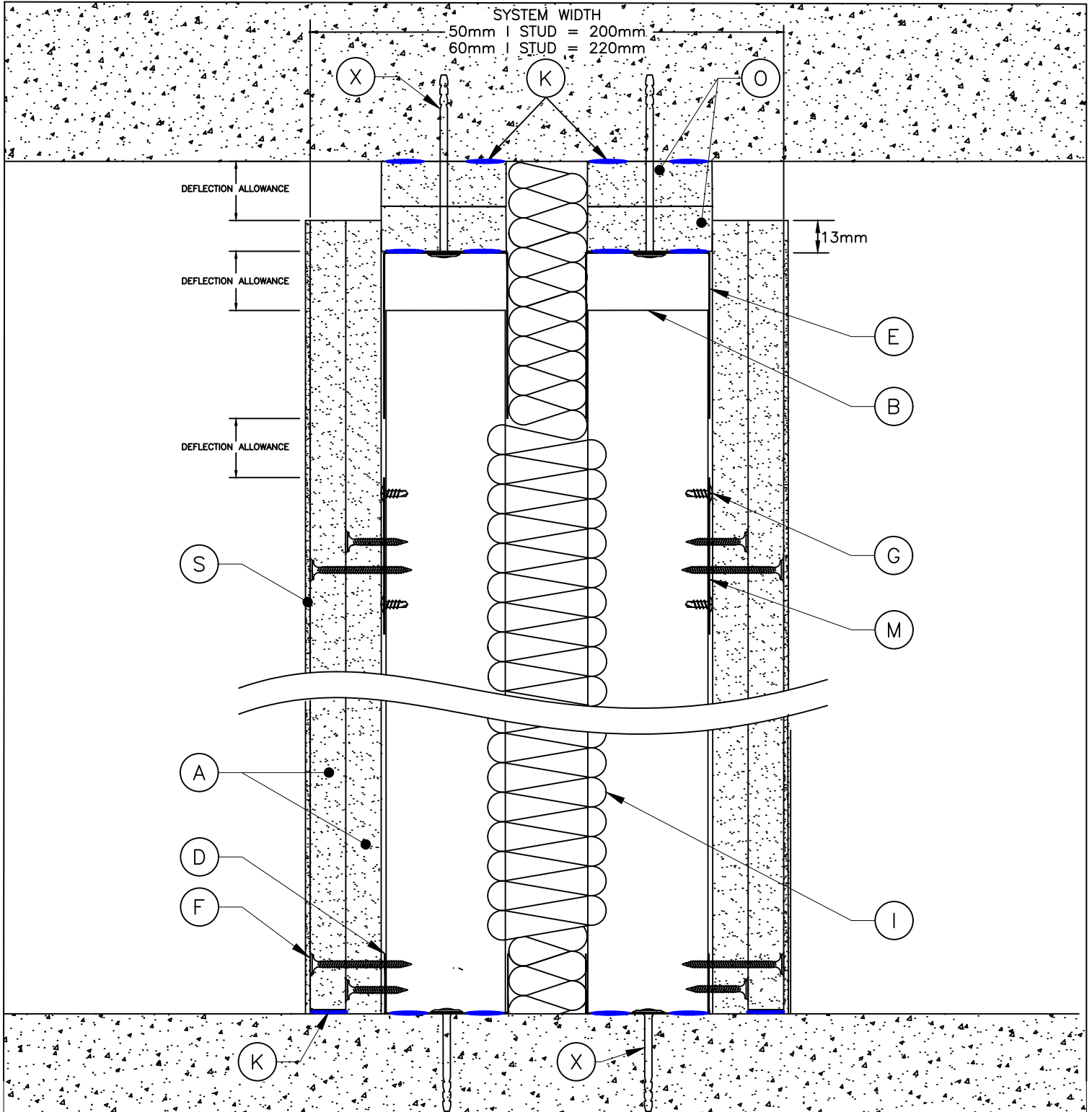
REVISION:

ISSUE DATE: JULY 2025

SCALE: NTS

DRAWN BY:  
TECHNICAL

APPROVED BY: TMT



A	KNAUF PLASTERBOARD, TO SUIT SPECIFICATION	H	KNAUF COREBOARD	O	KNAUF 2 x 19mm COREBOARD FILLETS	V	KNAUF STAGGERED STUD CLIP, TO SUIT SPECIFICATION
B	KNAUF 'I' STUD, TO SUIT SPECIFICATION	I	FOR 50/60mm I STUD PARTITIONS KNAUF 50mm ACOUSTIC ROLL INSULATION TO BE USED	P	KNAUF PUTTY PAD	W	KNAUF MOVEMENT CONTROL JOINT
C	KNAUF 'C' STUD, TO SUIT SPECIFICATION	J	FOR 70mm I STUD PARTITIONS KNAUF 100mm ACOUSTIC ROLL INSULATION TO BE USED	Q	KNAUF 25 X 25MM ANGLE SECTION	X	APPROVED FIXING TO MEET SUBSTRATE/LOADING REQUIREMENTS
D	KNAUF 'U' CHANNEL, TO SUIT SPECIFICATION	K	KNAUF INTUMESCENT AND ACOUSTIC MASTIC	R	KNAUF 25 X 50MM ANGLE SECTION	Y	PLYWOOD, TO SUIT SPECIFICATION, BY OTHERS
E	KNAUF 70mm DEEP FLANGE 'U' CHANNEL	L	KNAUF JOINTING RANGE	S	KNAUF FINISHING RANGE	Z	SHAPED TIMBER GROUND, TO SUIT SPECIFICATION, BY OTHERS
F	KNAUF SCREW, TO SUIT SPECIFICATION, AT 300MM C/C	M	KNAUF FLAT FIXING PLATE, TO SUIT SPECIFICATION	T	KNAUF INSULATION ROCKSILK® RS60	M1	KNAUF FIXING CHANNEL
G	KNAUF WAFER HEAD SCREW, TO SUIT SPECIFICATION	N	KNAUF COREBOARD CHANNEL	U	KNAUF RESILIENT BAR, TO SUIT SPECIFICATION	-	-

- STANDARD ARRANGEMENT OF KNAUF COMPONENTS FORMING KNAUF SYSTEM TYPES AND THEIR TYPICAL APPLICATIONS WHICH SHOULD BE USED FOR REFERENCE TO HELP THE DEVELOPMENT OF INSTALLATION AND SITE DETAILING. STANDARD DETAILS ARE SUBMITTED TO SUPPORT THE KNAUF SPECIFICATION AND FORM PART OF TESTED SYSTEMS/AND OR HAVE BEEN REVIEWED BY AN ACCREDITED THIRD PARTY TO DEMONSTRATE SUITABILITY. NOTE:
- STANDARD DETAILS DO NOT CONSTITUTE CONSTRUCTION ISSUE DETAILS WHICH REMAIN THE RESPONSIBILITY OF THE PRINCIPAL DESIGNER/CONTRACTOR WHO IS REQUIRED TO TRANSLATE AND SUITABLY INTEGRATE THE STANDARD DETAILS INTO THE OVERARCHING ARCHITECTURAL DESIGN AND/OR INSTALLATION. THE PRINCIPAL DESIGNER/CONTRACTOR IS REQUIRED TO CONSIDER INTERFACES WITH OTHER SYSTEM TYPES, STRUCTURES, OPENINGS, AND JUNCTIONS WHILST ENSURING THE SITE-SPECIFIC PERFORMANCE STRATEGY IS MET. THESE INCLUDE, BUT ARE NOT LIMITED TO, FIRE, ROBUSTNESS, ACOUSTICS, THERMAL, AIRTIGHTNESS AND MOISTURE RESISTANT FOR THE BUILDING.
- FURTHER NOTES:

# KNAUF STANDARD DETAILS

DRAWING NO.: KSD25-0030



DETAIL TITLE: ISOLATOR- 70mm I STUD - TWIN FRAME SYSTEM, DOUBLE BOARDED

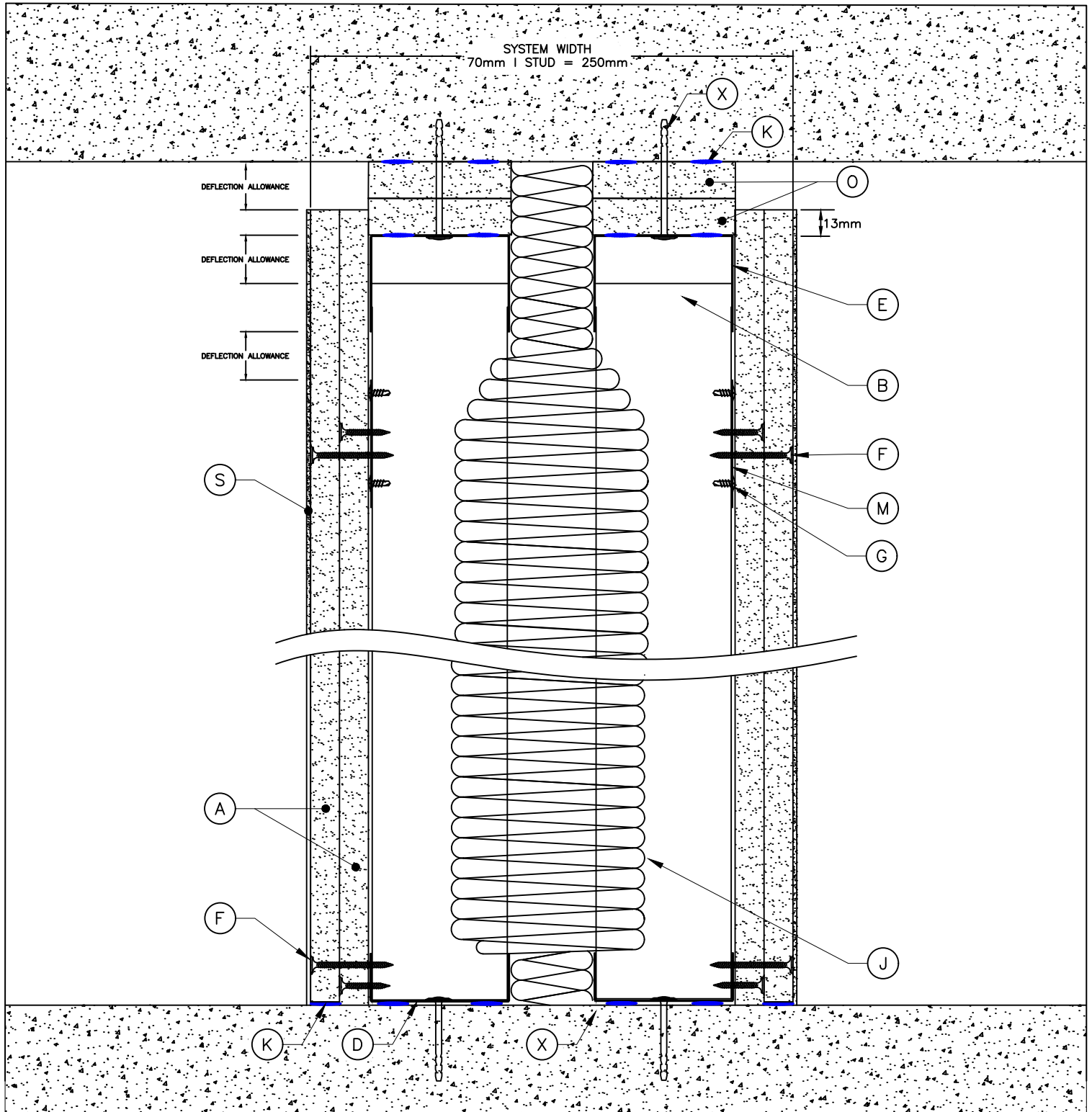
REVISION:

ISSUE DATE: JULY 2025

SCALE: NTS

DRAWN BY:  
TECHNICAL

APPROVED BY: TMT



A	KNAUF PLASTERBOARD, TO SUIT SPECIFICATION	H	KNAUF COREBOARD	O	KNAUF 2 x 19mm COREBOARD FILLETS	V	KNAUF STAGGERED STUD CLIP, TO SUIT SPECIFICATION
B	KNAUF 'I' STUD, TO SUIT SPECIFICATION	I	FOR 50/60mm I STUD PARTITIONS KNAUF 50mm ACOUSTIC ROLL INSULATION TO BE USED	P	KNAUF PUTTY PAD	W	KNAUF MOVEMENT CONTROL JOINT
C	KNAUF 'C' STUD, TO SUIT SPECIFICATION	J	FOR 70mm I STUD PARTITIONS KNAUF 100mm ACOUSTIC ROLL INSULATION TO BE USED	Q	KNAUF 25 X 25MM ANGLE SECTION	X	APPROVED FIXING TO MEET SUBSTRATE/LOADING REQUIREMENTS
D	KNAUF 'U' CHANNEL, TO SUIT SPECIFICATION	K	KNAUF INTUMESCENT AND ACOUSTIC MASTIC	R	KNAUF 25 X 50MM ANGLE SECTION	Y	PLYWOOD, TO SUIT SPECIFICATION, BY OTHERS
E	KNAUF 70mm DEEP FLANGE 'U' CHANNEL	L	KNAUF JOINTING RANGE	S	KNAUF FINISHING RANGE	Z	SHAPED TIMBER GROUND, TO SUIT SPECIFICATION, BY OTHERS
F	KNAUF SCREW, TO SUIT SPECIFICATION, AT 300MM C/C	M	KNAUF FLAT FIXING PLATE, TO SUIT SPECIFICATION	T	KNAUF INSULATION ROCKSILK® RS60	M1	KNAUF FIXING CHANNEL
G	KNAUF WAFER HEAD SCREW, TO SUIT SPECIFICATION	N	KNAUF COREBOARD CHANNEL	U	KNAUF RESILIENT BAR, TO SUIT SPECIFICATION	-	-

- STANDARD ARRANGEMENT OF KNAUF COMPONENTS FORMING KNAUF SYSTEM TYPES AND THEIR TYPICAL APPLICATIONS WHICH SHOULD BE USED FOR REFERENCE TO HELP THE DEVELOPMENT OF INSTALLATION AND SITE DETAILING. STANDARD DETAILS ARE SUBMITTED TO SUPPORT THE KNAUF SPECIFICATION AND FORM PART OF TESTED SYSTEMS/AND OR HAVE BEEN REVIEWED BY AN ACCREDITED THIRD PARTY TO DEMONSTRATE SUITABILITY. NOTE:
- STANDARD DETAILS DO NOT CONSTITUTE CONSTRUCTION ISSUE DETAILS WHICH REMAIN THE RESPONSIBILITY OF THE PRINCIPAL DESIGNER/CONTRACTOR WHO IS REQUIRED TO TRANSLATE AND SUITABLY INTEGRATE THE STANDARD DETAILS INTO THE OVERARCHING ARCHITECTURAL DESIGN AND/OR INSTALLATION. THE PRINCIPAL DESIGNER/CONTRACTOR IS REQUIRED TO CONSIDER INTERFACES WITH OTHER SYSTEM TYPES, STRUCTURES, OPENINGS, AND JUNCTIONS WHILST ENSURING THE SITE-SPECIFIC PERFORMANCE STRATEGY IS MET. THESE INCLUDE, BUT ARE NOT LIMITED TO, FIRE, ROBUSTNESS, ACOUSTICS, THERMAL, AIRTIGHTNESS AND MOISTURE RESISTANT FOR THE BUILDING.
- FURTHER NOTES:

# KNAUF STANDARD DETAILS

DRAWING NO: KSD25-0031



DETAIL TITLE: ISOLATOR-1 STUD SYSTEMS -, DOUBLE BOARDED, STANDARD T-JUNCTION, PLAN VIEW

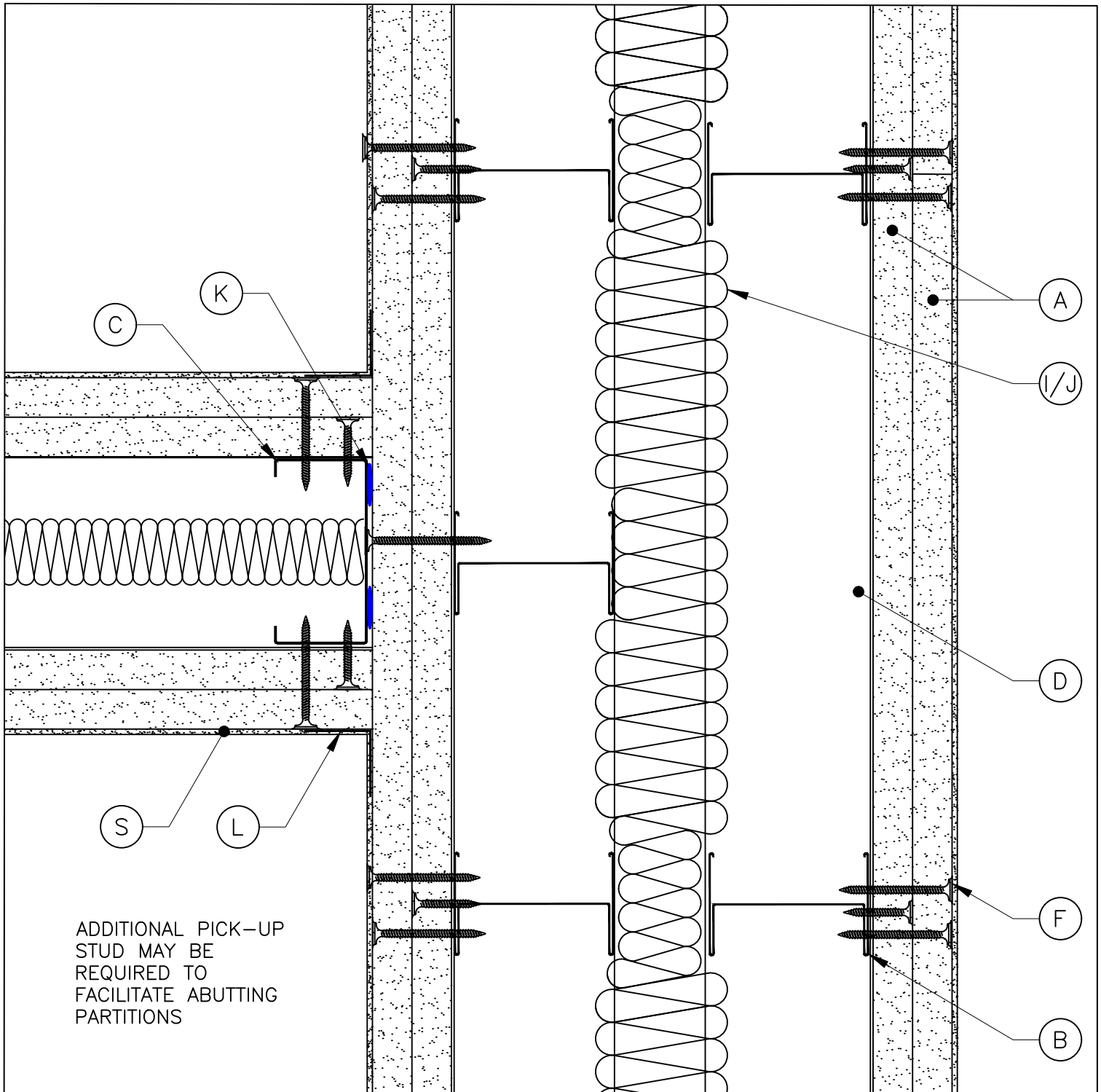
REVISION:

ISSUE DATE: JULY 2025

SCALE: NTS

DRAWN BY:  
TECHNICAL

APPROVED BY: TMT



A	KNAUF PLASTERBOARD, TO SUIT SPECIFICATION	H	KNAUF COREBOARD	O	KNAUF 2 x 19mm COREBOARD FILLETS	V	KNAUF STAGGERED STUD CLIP, TO SUIT SPECIFICATION
B	KNAUF "I" STUD, TO SUIT SPECIFICATION	I	FOR 50/60mm I STUD PARTITIONS KNAUF 50mm ACOUSTIC ROLL INSULATION TO BE USED	P	KNAUF PUTTY PAD	W	KNAUF MOVEMENT CONTROL JOINT
C	KNAUF 'C' STUD, TO SUIT SPECIFICATION	J	FOR 70mm I STUD PARTITIONS KNAUF 100mm ACOUSTIC ROLL INSULATION TO BE USED	Q	KNAUF 25 X 25MM ANGLE SECTION	X	APPROVED FIXING TO MEET SUBSTRATE/LOADING REQUIREMENTS
D	KNAUF 'U' CHANNEL, TO SUIT SPECIFICATION	K	KNAUF INTUMESCENT AND ACOUSTIC MASTIC	R	KNAUF 25 X 50MM ANGLE SECTION	Y	PLYWOOD, TO SUIT SPECIFICATION, BY OTHERS
E	KNAUF 70mm DEEP FLANGE 'U' CHANNEL	L	KNAUF JOINTING RANGE	S	KNAUF FINISHING RANGE	Z	SHAPED TIMBER GROUND, TO SUIT SPECIFICATION, BY OTHERS
F	KNAUF SCREW, TO SUIT SPECIFICATION, AT 300MM C/C	M	KNAUF FLAT FIXING PLATE, TO SUIT SPECIFICATION	T	KNAUF INSULATION ROCKSILK® RS60	M1	KNAUF FIXING CHANNEL
G	KNAUF WAFFER HEAD SCREW, TO SUIT SPECIFICATION	N	KNAUF COREBOARD CHANNEL	U	KNAUF RESILIENT BAR, TO SUIT SPECIFICATION	-	-

- STANDARD ARRANGEMENT OF KNAUF COMPONENTS FORMING KNAUF SYSTEM TYPES AND THEIR TYPICAL APPLICATIONS WHICH SHOULD BE USED FOR REFERENCE TO HELP THE DEVELOPMENT OF INSTALLATION AND SITE DETAILING. STANDARD DETAILS ARE SUBMITTED TO SUPPORT THE KNAUF SPECIFICATION AND FORM PART OF TESTED SYSTEMS/AND OR HAVE BEEN REVIEWED BY AN ACCREDITED THIRD PARTY TO DEMONSTRATE SUITABILITY.
- **NOTE:**
- STANDARD DETAILS DO NOT CONSTITUTE CONSTRUCTION ISSUE DETAILS WHICH REMAIN THE RESPONSIBILITY OF THE PRINCIPAL DESIGNER/CONTRACTOR WHO IS REQUIRED TO TRANSLATE AND SUITABLY INTEGRATE THE STANDARD DETAILS INTO THE OVERARCHING ARCHITECTURAL DESIGN AND/OR INSTALLATION. THE PRINCIPAL DESIGNER/CONTRACTOR IS REQUIRED TO CONSIDER INTERFACES WITH OTHER SYSTEM TYPES, STRUCTURES, OPENINGS, AND JUNCTIONS WHILST ENSURING THE SITE-SPECIFIC PERFORMANCE STRATEGY IS MET. THESE INCLUDE, BUT ARE NOT LIMITED TO, FIRE, ROBUSTNESS, ACOUSTICS, THERMAL, AIRTIGHTNESS AND MOISTURE RESISTANT FOR THE BUILDING.
- **FURTHER NOTES:**

# KNAUF STANDARD DETAILS

DRAWING NO: KSD25-0032



DETAIL TITLE: ISOLATOR- I STUD SYSTEMS- TWIN FRAME SYSTEM, DOUBLE BOARDED, ACOUSTIC T-JUNCTION, PLAN VIEW

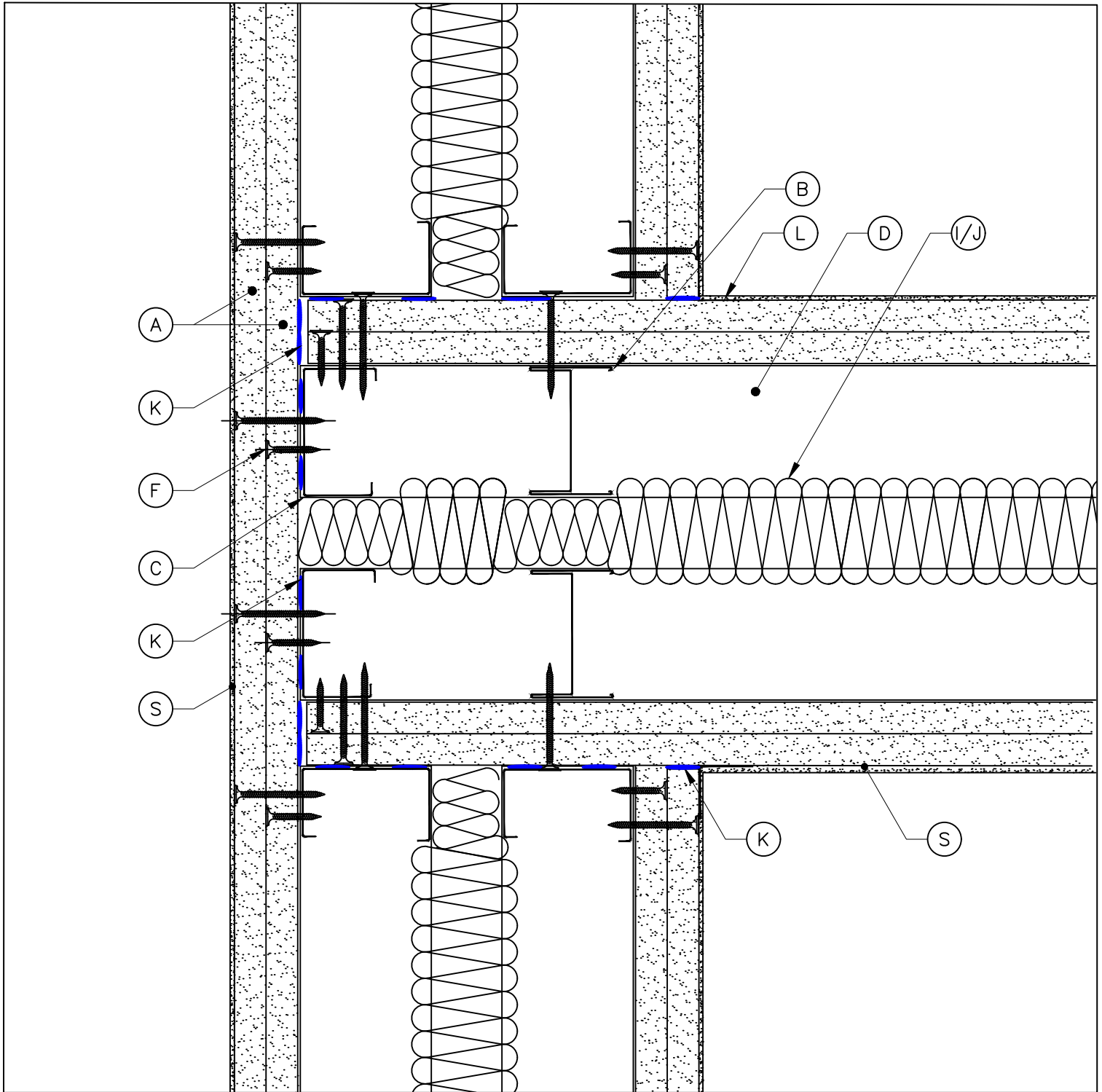
REVISION:

ISSUE DATE: JULY 2025

SCALE: NTS

DRAWN BY: TECHNICAL

APPROVED BY: TMT



A	KNAUF PLASTERBOARD, TO SUIT SPECIFICATION	H	KNAUF COREBOARD	O	KNAUF 2 x 19mm COREBOARD FILLETS	V	KNAUF STAGGERED STUD CLIP, TO SUIT SPECIFICATION
B	KNAUF "I" STUD, TO SUIT SPECIFICATION	I	FOR 50/60mm I STUD PARTITIONS KNAUF 50mm ACOUSTIC ROLL INSULATION TO BE USED	P	KNAUF PUTTY PAD	W	KNAUF MOVEMENT CONTROL JOINT
C	KNAUF 'C' STUD, TO SUIT SPECIFICATION	J	FOR 70mm I STUD PARTITIONS KNAUF 100mm ACOUSTIC ROLL INSULATION TO BE USED	Q	KNAUF 25 X 25MM ANGLE SECTION	X	APPROVED FIXING TO MEET SUBSTRATE/LOADING REQUIREMENTS
D	KNAUF 'U' CHANNEL, TO SUIT SPECIFICATION	K	KNAUF INTUMESCENT AND ACOUSTIC MASTIC	R	KNAUF 25 X 50MM ANGLE SECTION	Y	PLYWOOD, TO SUIT SPECIFICATION, BY OTHERS
E	KNAUF 70mm DEEP FLANGE 'U' CHANNEL	L	KNAUF JOINTING RANGE	S	KNAUF FINISHING RANGE	Z	SHAPED TIMBER GROUND, TO SUIT SPECIFICATION, BY OTHERS
F	KNAUF SCREW, TO SUIT SPECIFICATION, AT 300MM C/C	M	KNAUF FLAT FIXING PLATE, TO SUIT SPECIFICATION	T	KNAUF INSULATION ROCKSILK® RS60	M1	KNAUF FIXING CHANNEL
G	KNAUF WAFER HEAD SCREW, TO SUIT SPECIFICATION	N	KNAUF COREBOARD CHANNEL	U	KNAUF RESILIENT BAR, TO SUIT SPECIFICATION	-	-

- STANDARD ARRANGEMENT OF KNAUF COMPONENTS FORMING KNAUF SYSTEM TYPES AND THEIR TYPICAL APPLICATIONS WHICH SHOULD BE USED FOR REFERENCE TO HELP THE DEVELOPMENT OF INSTALLATION AND SITE DETAILING. STANDARD DETAILS ARE SUBMITTED TO SUPPORT THE KNAUF SPECIFICATION AND FORM PART OF TESTED SYSTEMS/AND OR HAVE BEEN REVIEWED BY AN ACCREDITED THIRD PARTY TO DEMONSTRATE SUITABILITY. NOTE:
- STANDARD DETAILS DO NOT CONSTITUTE CONSTRUCTION ISSUE DETAILS WHICH REMAIN THE RESPONSIBILITY OF THE PRINCIPAL DESIGNER/CONTRACTOR WHO IS REQUIRED TO TRANSLATE AND SUITABLY INTEGRATE THE STANDARD DETAILS INTO THE OVERARCHING ARCHITECTURAL DESIGN AND/OR INSTALLATION. THE PRINCIPAL DESIGNER/CONTRACTOR IS REQUIRED TO CONSIDER INTERFACES WITH OTHER SYSTEM TYPES, STRUCTURES, OPENINGS, AND JUNCTIONS WHILST ENSURING THE SITE-SPECIFIC PERFORMANCE STRATEGY IS MET. THESE INCLUDE, BUT ARE NOT LIMITED TO, FIRE, ROBUSTNESS, ACOUSTICS, THERMAL, AIRTIGHTNESS AND MOISTURE RESISTANT FOR THE BUILDING.
- FURTHER NOTES:

# KNAUF STANDARD DETAILS

DRAWING NO: KSD23-0033



DETAIL TITLE: ISOLATOR- I STUD - SYSTEMS - TWIN FRAME SYSTEM, DOUBLE BOARDED, MOUSE HOLE, SECTION VIEW

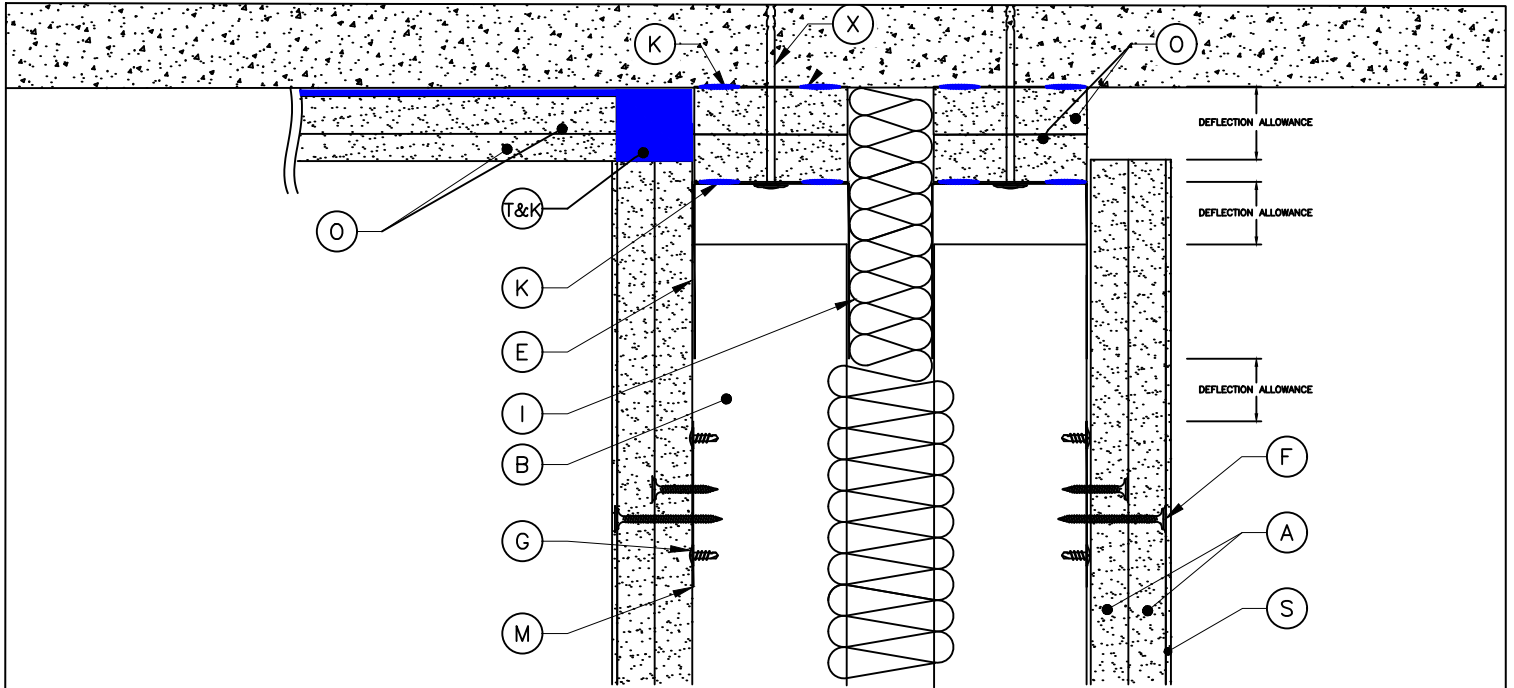
REVISION:

ISSUE DATE: JULY 2025

SCALE: NTS

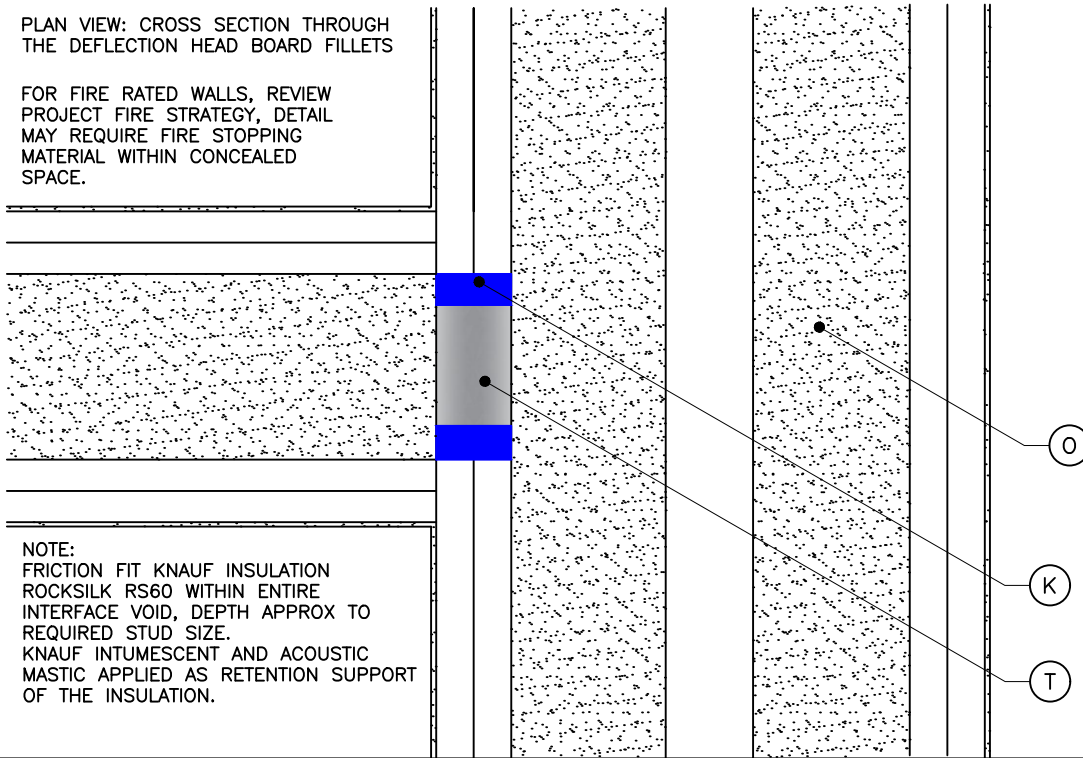
DRAWN BY:  
TECHNICAL

APPROVED BY: TMT



PLAN VIEW: CROSS SECTION THROUGH THE DEFLECTION HEAD BOARD FILLETS

FOR FIRE RATED WALLS, REVIEW PROJECT FIRE STRATEGY, DETAIL MAY REQUIRE FIRE STOPPING MATERIAL WITHIN CONCEALED SPACE.



NOTE:  
FRICTION FIT KNAUF INSULATION ROCKSILK RS60 WITHIN ENTIRE INTERFACE VOID, DEPTH APPROX TO REQUIRED STUD SIZE.  
KNAUF INTUMESCENT AND ACOUSTIC MASTIC APPLIED AS RETENTION SUPPORT OF THE INSULATION.

A	KNAUF PLASTERBOARD, TO SUIT SPECIFICATION	H	KNAUF COREBOARD	O	KNAUF 2 x 19mm COREBOARD FILLETS	V	KNAUF STAGGERED STUD CLIP, TO SUIT SPECIFICATION
B	KNAUF "I" STUD, TO SUIT SPECIFICATION	I	FOR 50/60mm I STUD PARTITIONS KNAUF 50mm ACOUSTIC ROLL INSULATION TO BE USED	P	KNAUF PUTTY PAD	W	KNAUF MOVEMENT CONTROL JOINT
C	KNAUF 'C' STUD, TO SUIT SPECIFICATION	J	FOR 70mm I STUD PARTITIONS KNAUF 100mm ACOUSTIC ROLL INSULATION TO BE USED	Q	KNAUF 25 X 25MM ANGLE SECTION	X	APPROVED FIXING TO MEET SUBSTRATE/LOADING REQUIREMENTS
D	KNAUF 'U' CHANNEL, TO SUIT SPECIFICATION	K	KNAUF INTUMESCENT AND ACOUSTIC MASTIC	R	KNAUF 25 X 50MM ANGLE SECTION	Y	PLYWOOD, TO SUIT SPECIFICATION, BY OTHERS
E	KNAUF 70mm DEEP FLANGE 'U' CHANNEL	L	KNAUF JOINTING RANGE	S	KNAUF FINISHING RANGE	Z	SHAPED TIMBER GROUND, TO SUIT SPECIFICATION, BY OTHERS
F	KNAUF SCREW, TO SUIT SPECIFICATION, AT 300MM C/C	M	KNAUF FLAT FIXING PLATE, TO SUIT SPECIFICATION	T	KNAUF INSULATION ROCKSILK® RS60	M1	KNAUF FIXING CHANNEL
G	KNAUF WAFER HEAD SCREW, TO SUIT SPECIFICATION	N	KNAUF COREBOARD CHANNEL	U	KNAUF RESILIENT BAR, TO SUIT SPECIFICATION	-	-

- STANDARD ARRANGEMENT OF KNAUF COMPONENTS FORMING KNAUF SYSTEM TYPES AND THEIR TYPICAL APPLICATIONS WHICH SHOULD BE USED FOR REFERENCE TO HELP THE DEVELOPMENT OF INSTALLATION AND SITE DETAILING. STANDARD DETAILS ARE SUBMITTED TO SUPPORT THE KNAUF SPECIFICATION AND FORM PART OF TESTED SYSTEMS/AND OR HAVE BEEN REVIEWED BY AN ACCREDITED THIRD PARTY TO DEMONSTRATE SUITABILITY.
- NOTE:
- STANDARD DETAILS DO NOT CONSTITUTE CONSTRUCTION ISSUE DETAILS WHICH REMAIN THE RESPONSIBILITY OF THE PRINCIPAL DESIGNER/CONTRACTOR WHO IS REQUIRED TO TRANSLATE AND SUITABLY INTEGRATE THE STANDARD DETAILS INTO THE OVERARCHING ARCHITECTURAL DESIGN AND/OR INSTALLATION. THE PRINCIPAL DESIGNER/CONTRACTOR IS REQUIRED TO CONSIDER INTERFACES WITH OTHER SYSTEM TYPES, STRUCTURES, OPENINGS, AND JUNCTIONS WHILST ENSURING THE SITE-SPECIFIC PERFORMANCE STRATEGY IS MET. THESE INCLUDE, BUT ARE NOT LIMITED TO, FIRE, ROBUSTNESS, ACOUSTICS, THERMAL, AIRTIGHTNESS AND MOISTURE RESISTANT FOR THE BUILDING.
- FURTHER NOTES:

# KNAUF STANDARD DETAILS

DRAWING NO: KSD25-0034



DETAIL TITLE: ISOLATOR-I STUD - SYSTEMS- TWIN FRAME SYSTEM, DOUBLE BOARDED,  
GENERAL PLAN VIEW

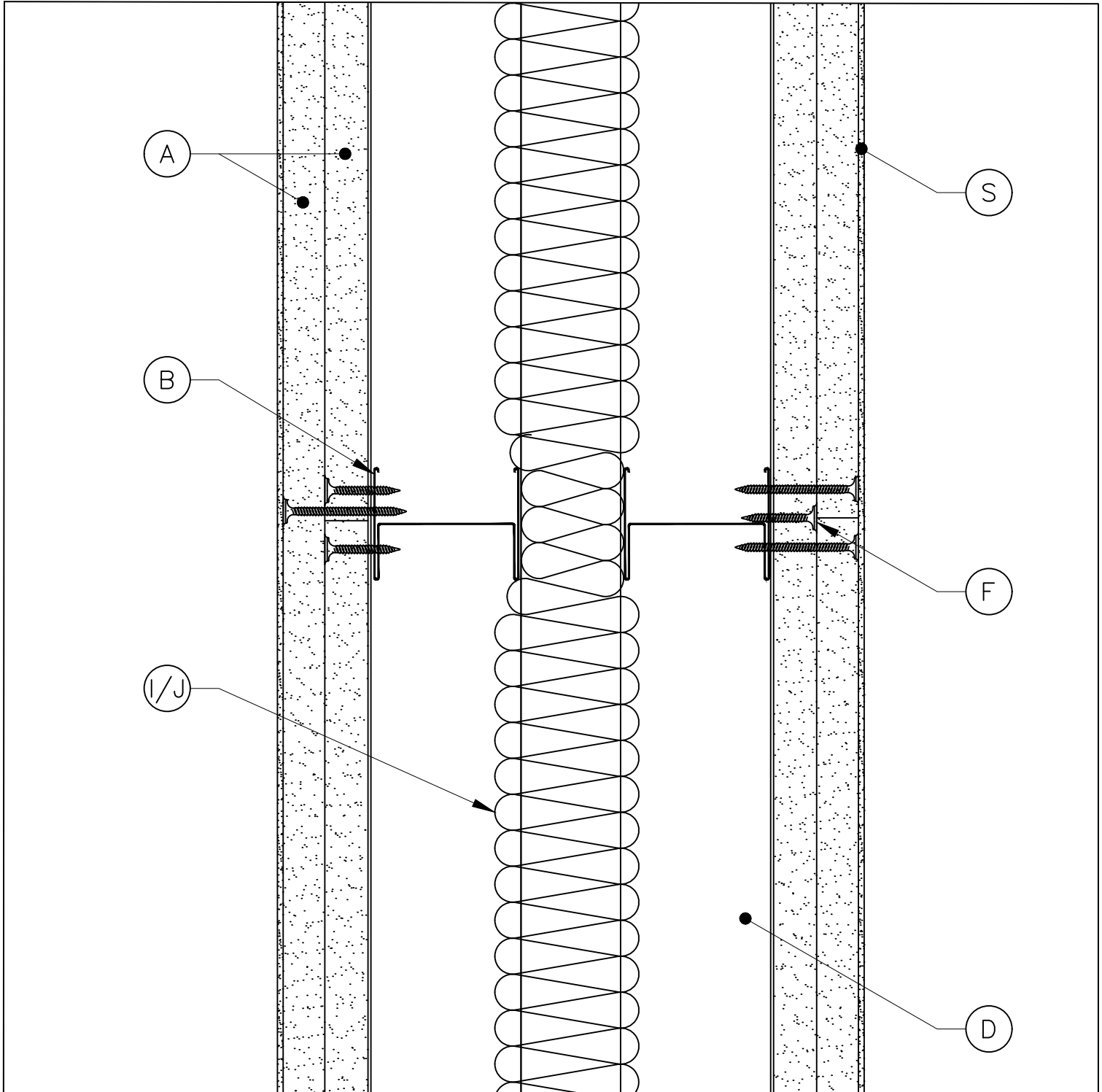
REVISION:

ISSUE DATE: JULY 2025

SCALE: NTS

DRAWN BY:  
TECHNICAL

APPROVED BY: TMT



A	KNAUF PLASTERBOARD, TO SUIT SPECIFICATION	H	KNAUF COREBOARD	O	KNAUF 2 x 19mm COREBOARD FILLETS	V	KNAUF STAGGERED STUD CLIP, TO SUIT SPECIFICATION
B	KNAUF 'I' STUD, TO SUIT SPECIFICATION	I	FOR 50/60mm I STUD PARTITIONS KNAUF 50mm ACOUSTIC ROLL INSULATION TO BE USED	P	KNAUF PUTTY PAD	W	KNAUF MOVEMENT CONTROL JOINT
C	KNAUF 'C' STUD, TO SUIT SPECIFICATION	J	FOR 70mm I STUD PARTITIONS KNAUF 100mm ACOUSTIC ROLL INSULATION TO BE USED	Q	KNAUF 25 X 25MM ANGLE SECTION	X	APPROVED FIXING TO MEET SUBSTRATE/LOADING REQUIREMENTS
D	KNAUF 'U' CHANNEL, TO SUIT SPECIFICATION	K	KNAUF INTUMESCENT AND ACOUSTIC MASTIC	R	KNAUF 25 X 50MM ANGLE SECTION	Y	PLYWOOD, TO SUIT SPECIFICATION, BY OTHERS
E	KNAUF 70mm DEEP FLANGE 'U' CHANNEL	L	KNAUF JOINTING RANGE	S	KNAUF FINISHING RANGE	Z	SHAPED TIMBER GROUND, TO SUIT SPECIFICATION, BY OTHERS
F	KNAUF SCREW, TO SUIT SPECIFICATION, AT 300MM C/C	M	KNAUF FLAT FIXING PLATE, TO SUIT SPECIFICATION	T	KNAUF INSULATION ROCKSILK® RS60	M1	KNAUF FIXING CHANNEL
G	KNAUF WAFER HEAD SCREW, TO SUIT SPECIFICATION	N	KNAUF COREBOARD CHANNEL	U	KNAUF RESILIENT BAR, TO SUIT SPECIFICATION	-	-

- STANDARD ARRANGEMENT OF KNAUF COMPONENTS FORMING KNAUF SYSTEM TYPES AND THEIR TYPICAL APPLICATIONS WHICH SHOULD BE USED FOR REFERENCE TO HELP THE DEVELOPMENT OF INSTALLATION AND SITE DETAILING. STANDARD DETAILS ARE SUBMITTED TO SUPPORT THE KNAUF SPECIFICATION AND FORM PART OF TESTED SYSTEMS/AND OR HAVE BEEN REVIEWED BY AN ACCREDITED THIRD PARTY TO DEMONSTRATE SUITABILITY.
- **NOTE:**
- STANDARD DETAILS DO NOT CONSTITUTE CONSTRUCTION ISSUE DETAILS WHICH REMAIN THE RESPONSIBILITY OF THE PRINCIPAL DESIGNER/CONTRACTOR WHO IS REQUIRED TO TRANSLATE AND SUITABLY INTEGRATE THE STANDARD DETAILS INTO THE OVERARCHING ARCHITECTURAL DESIGN AND/OR INSTALLATION. THE PRINCIPAL DESIGNER/CONTRACTOR IS REQUIRED TO CONSIDER INTERFACES WITH OTHER SYSTEM TYPES, STRUCTURES, OPENINGS, AND JUNCTIONS WHILST ENSURING THE SITE-SPECIFIC PERFORMANCE STRATEGY IS MET. THESE INCLUDE, BUT ARE NOT LIMITED TO, FIRE, ROBUSTNESS, ACOUSTICS, THERMAL, AIRTIGHTNESS AND MOISTURE RESISTANT FOR THE BUILDING.
- **FURTHER NOTES:**

# KNAUF STANDARD DETAILS

DRAWING NO: KSD25-0035



DETAIL TITLE: ISOLATOR- I STUD SYSTEMS - TWIN FRAME SYSTEM, DOUBLE BOARDED, ABUTMENT TO CONCRETE, PLAN VIEW

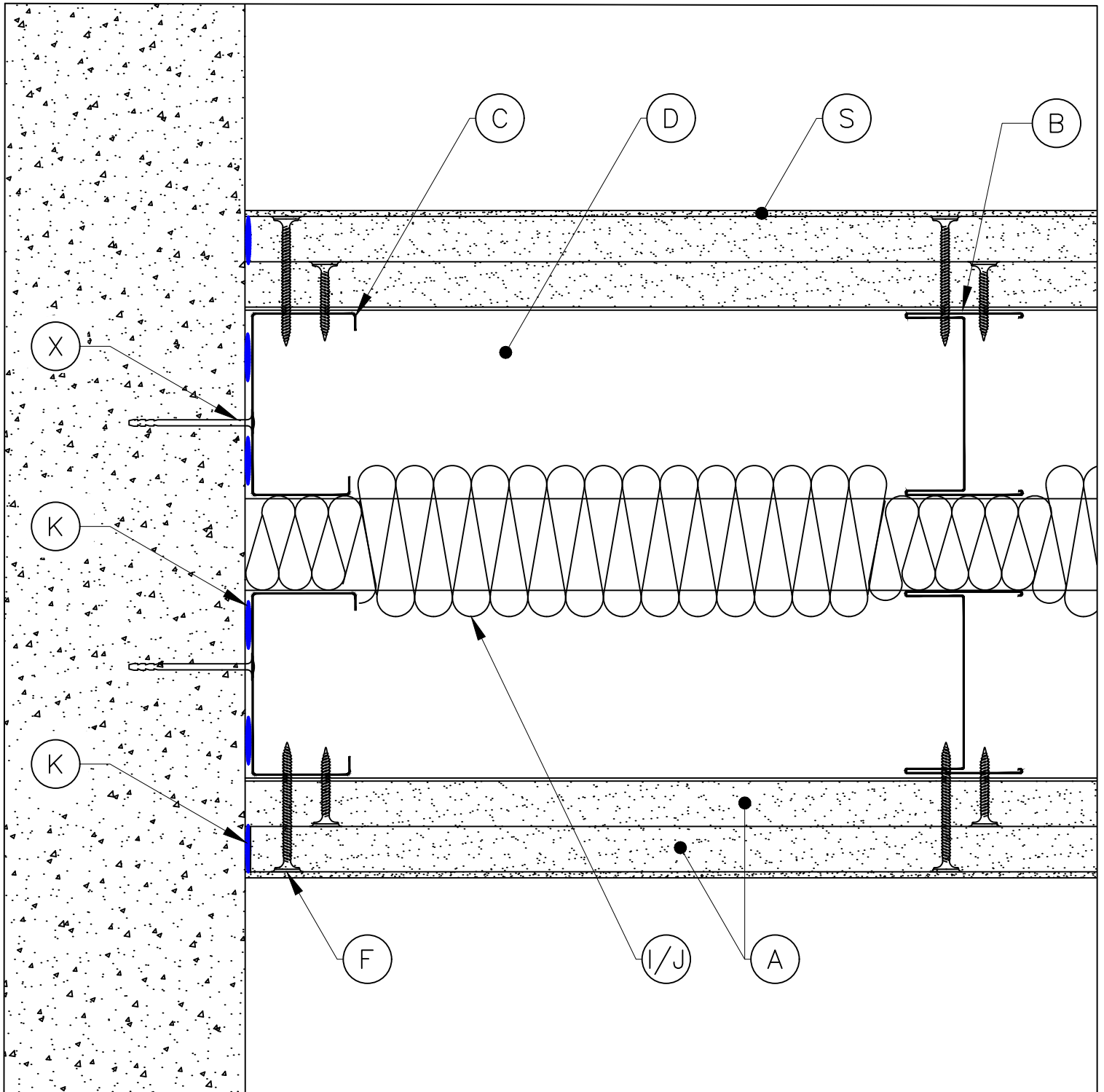
REVISION:

ISSUE DATE: JULY 2025

SCALE: NTS

DRAWN BY:  
TECHNICAL

APPROVED BY: TMT



A	KNAUF PLASTERBOARD, TO SUIT SPECIFICATION	H	KNAUF COREBOARD	O	KNAUF 2 x 19mm COREBOARD FILLETS	V	KNAUF STAGGERED STUD CLIP, TO SUIT SPECIFICATION
B	KNAUF 1\"/>						
C	KNAUF 'C' STUD, TO SUIT SPECIFICATION	J	FOR 70mm I STUD PARTITIONS KNAUF 100mm ACOUSTIC ROLL INSULATION TO BE USED	Q	KNAUF 25 X 25MM ANGLE SECTION	X	APPROVED FIXING TO MEET SUBSTRATE/LOADING REQUIREMENTS
D	KNAUF 'U' CHANNEL, TO SUIT SPECIFICATION	K	KNAUF INTUMESCENT AND ACOUSTIC MASTIC	R	KNAUF 25 X 50MM ANGLE SECTION	Y	PLYWOOD, TO SUIT SPECIFICATION, BY OTHERS
E	KNAUF 70mm DEEP FLANGE 'U' CHANNEL	L	KNAUF JOINTING RANGE	S	KNAUF FINISHING RANGE	Z	SHAPED TIMBER GROUND, TO SUIT SPECIFICATION, BY OTHERS
F	KNAUF SCREW, TO SUIT SPECIFICATION, AT 300MM C/C	M	KNAUF FLAT FIXING PLATE, TO SUIT SPECIFICATION	T	KNAUF INSULATION ROCKSILK® RS60	M1	KNAUF FIXING CHANNEL
G	KNAUF WAFFER HEAD SCREW, TO SUIT SPECIFICATION	N	KNAUF COREBOARD CHANNEL	U	KNAUF RESILIENT BAR, TO SUIT SPECIFICATION	-	-

- STANDARD ARRANGEMENT OF KNAUF COMPONENTS FORMING KNAUF SYSTEM TYPES AND THEIR TYPICAL APPLICATIONS WHICH SHOULD BE USED FOR REFERENCE TO HELP THE DEVELOPMENT OF INSTALLATION AND SITE DETAILING. STANDARD DETAILS ARE SUBMITTED TO SUPPORT THE KNAUF SPECIFICATION AND FORM PART OF TESTED SYSTEMS/AND OR HAVE BEEN REVIEWED BY AN ACCREDITED THIRD PARTY TO DEMONSTRATE SUITABILITY.

NOTE:

- STANDARD DETAILS DO NOT CONSTITUTE CONSTRUCTION ISSUE DETAILS WHICH REMAIN THE RESPONSIBILITY OF THE PRINCIPAL DESIGNER/CONTRACTOR WHO IS REQUIRED TO TRANSLATE AND SUITABLY INTEGRATE THE STANDARD DETAILS INTO THE OVERARCHING ARCHITECTURAL DESIGN AND/OR INSTALLATION. THE PRINCIPAL DESIGNER/CONTRACTOR IS REQUIRED TO CONSIDER INTERFACES WITH OTHER SYSTEM TYPES, STRUCTURES, OPENINGS, AND JUNCTIONS WHILST ENSURING THE SITE-SPECIFIC PERFORMANCE STRATEGY IS MET. THESE INCLUDE, BUT ARE NOT LIMITED TO, FIRE, ROBUSTNESS, ACOUSTICS, THERMAL, AIRTIGHTNESS AND MOISTURE RESISTANT FOR THE BUILDING.

FURTHER NOTES:

# KNAUF STANDARD DETAILS

DRAWING NO: KSD25-0036



DETAIL TITLE: ISOLATOR- I STUD - SYSTEMS - TWIN FRAME SYSTEM, DOUBLE BOARDED,  
90 DEGREE CORNER, PLAN VIEW

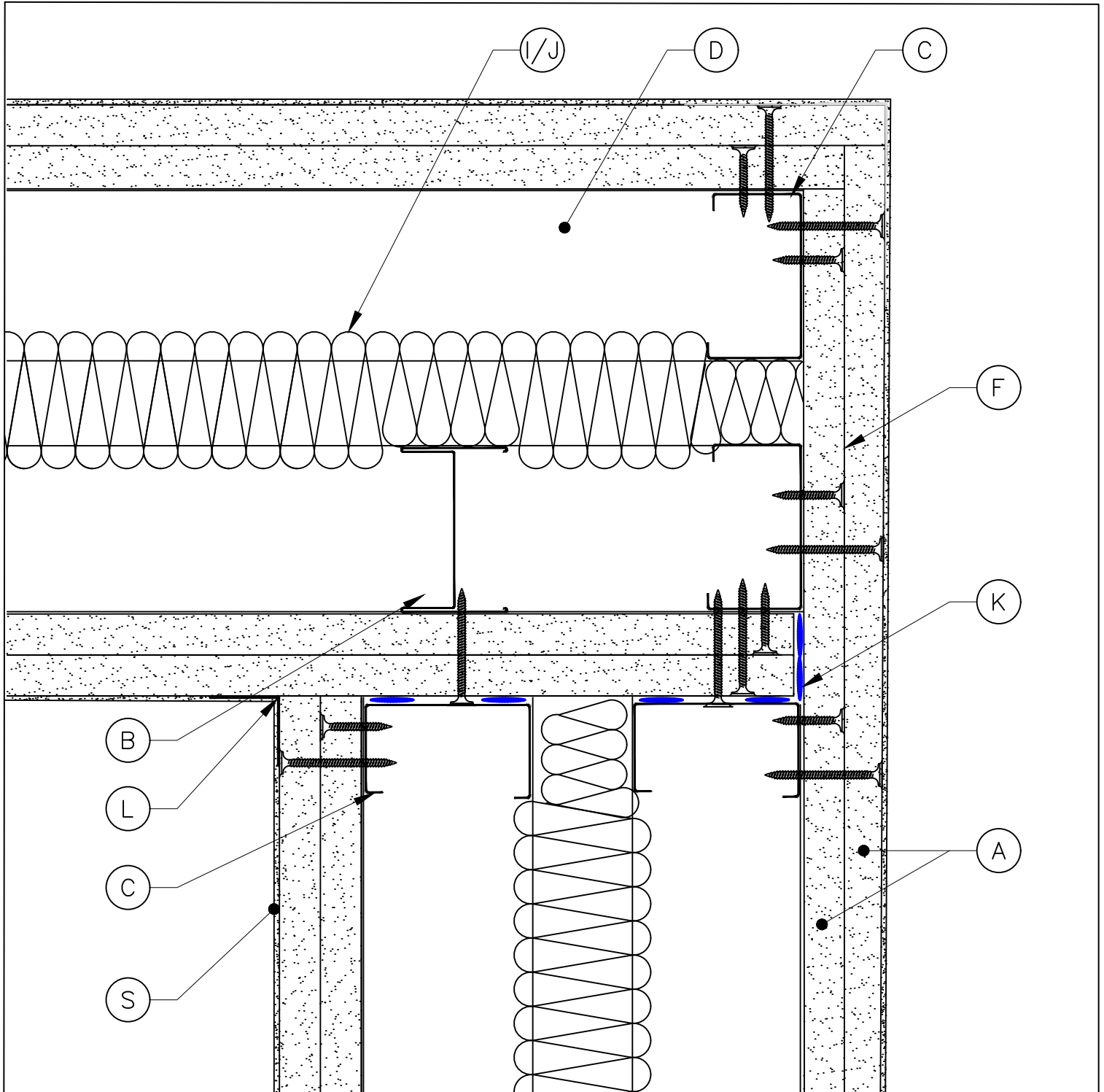
REVISION:

ISSUE DATE: JULY 2025

SCALE: NTS

DRAWN BY:  
TECHNICAL

APPROVED BY: TMT



A	KNAUF PLASTERBOARD, TO SUIT SPECIFICATION	H	KNAUF COREBOARD	O	KNAUF 2 x 19mm COREBOARD FILLETS	V	KNAUF STAGGERED STUD CLIP, TO SUIT SPECIFICATION
B	KNAUF 'I' STUD, TO SUIT SPECIFICATION	I	FOR 50/60mm I STUD PARTITIONS KNAUF 50mm ACOUSTIC ROLL INSULATION TO BE USED	P	KNAUF PUTTY PAD	W	KNAUF MOVEMENT CONTROL JOINT
C	KNAUF 'C' STUD, TO SUIT SPECIFICATION	J	FOR 70mm I STUD PARTITIONS KNAUF 100mm ACOUSTIC ROLL INSULATION TO BE USED	Q	KNAUF 25 X 25MM ANGLE SECTION	X	APPROVED FIXING TO MEET SUBSTRATE/LOADING REQUIREMENTS
D	KNAUF 'U' CHANNEL, TO SUIT SPECIFICATION	K	KNAUF INTUMESCENT AND ACOUSTIC MASTIC	R	KNAUF 25 X 50MM ANGLE SECTION	Y	PLYWOOD, TO SUIT SPECIFICATION, BY OTHERS
E	KNAUF 70mm DEEP FLANGE 'U' CHANNEL	L	KNAUF JOINTING RANGE	S	KNAUF FINISHING RANGE	Z	SHAPED TIMBER GROUND, TO SUIT SPECIFICATION, BY OTHERS
F	KNAUF SCREW, TO SUIT SPECIFICATION, AT 300MM C/C	M	KNAUF FLAT FIXING PLATE, TO SUIT SPECIFICATION	T	KNAUF INSULATION ROCKSILK® RS60	M1	KNAUF FIXING CHANNEL
G	KNAUF WAFER HEAD SCREW, TO SUIT SPECIFICATION	N	KNAUF COREBOARD CHANNEL	U	KNAUF RESILIENT BAR, TO SUIT SPECIFICATION	-	-

- STANDARD ARRANGEMENT OF KNAUF COMPONENTS FORMING KNAUF SYSTEM TYPES AND THEIR TYPICAL APPLICATIONS WHICH SHOULD BE USED FOR REFERENCE TO HELP THE DEVELOPMENT OF INSTALLATION AND SITE DETAILING. STANDARD DETAILS ARE SUBMITTED TO SUPPORT THE KNAUF SPECIFICATION AND FORM PART OF TESTED SYSTEMS/AND OR HAVE BEEN REVIEWED BY AN ACCREDITED THIRD PARTY TO DEMONSTRATE SUITABILITY. NOTE:
- STANDARD DETAILS DO NOT CONSTITUTE CONSTRUCTION ISSUE DETAILS WHICH REMAIN THE RESPONSIBILITY OF THE PRINCIPAL DESIGNER/CONTRACTOR WHO IS REQUIRED TO TRANSLATE AND SUITABLY INTEGRATE THE STANDARD DETAILS INTO THE OVERARCHING ARCHITECTURAL DESIGN AND/OR INSTALLATION. THE PRINCIPAL DESIGNER/CONTRACTOR IS REQUIRED TO CONSIDER INTERFACES WITH OTHER SYSTEM TYPES, STRUCTURES, OPENINGS, AND JUNCTIONS WHILST ENSURING THE SITE-SPECIFIC PERFORMANCE STRATEGY IS MET. THESE INCLUDE, BUT ARE NOT LIMITED TO, FIRE, ROBUSTNESS, ACOUSTICS, THERMAL, AIRTIGHTNESS AND MOISTURE RESISTANT FOR THE BUILDING.
- FURTHER NOTES: