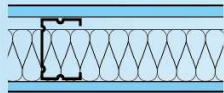


## STC 42

### 75mm Knauf Drywall Partition System

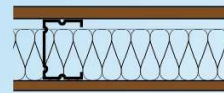
Face layer : 12.5mm Knauf Soundshield  
 Metal Stud : 50mm Metal Stud  
 Acoustic Infill : 50mm Rockwool (60kg/m3)  
 Face layer : 12.5mm Knauf Soundshield



## STC 48

### 100mm Knauf Drywall Partition System

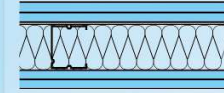
Face layer : 12.5mm Knauf Soundshield  
 Metal Stud : 75mm Metal Stud  
 Acoustic Infill : 50mm Rockwool (60kg/m3)  
 Face layer : 12.5mm Knauf Soundshield



## STC 55

### 100mm Knauf Drywall Partition System

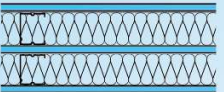
Face layer : 12.5mm Knauf Silentboard  
 Metal Stud : 75mm Metal Stud  
 Acoustic Infill : 50mm Rockwool (60kg/m3)  
 Face layer : 12.5mm Knauf Silentboard



## STC 57

### 100mm Knauf Drywall Partition System

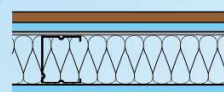
Face layer : 12.5mm Knauf Soundshield  
 Base layer : 12.5mm Knauf Soundshield  
 Metal Stud : 50mm Metal Stud  
 Acoustic Infill : 50mm Rockwool (60kg/m3)  
 Base layer : 12.5mm Knauf Soundshield  
 Face layer : 12.5mm Knauf Soundshield



## STC 50

### 143mm Knauf Drywall Partition System

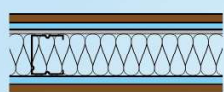
Face layer : 12.5mm Knauf Soundshield  
 Metal Stud : 50mm Metal Stud  
 Acoustic Infill : 50mm Rockwool (60kg/m3)  
 Middle layer : 12.5mm Knauf Soundshield  
 Separation : 5mm Gap (Approx.)  
 Metal Stud : 50mm Metal Stud  
 Acoustic Infill : 50mm Rockwool (60kg/m3)  
 Face layer : 12.5mm Knauf Soundshield



## STC 52

### 88mm Knauf Drywall Partition System

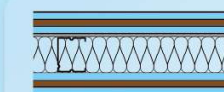
Face layer : 12.5mm Knauf Silentboard  
 Base layer : 12.5mm Knauf Soundshield  
 Metal Stud : 50mm Metal Stud  
 Acoustic Infill : 50mm Rockwool (60kg/m3)  
 Face Layer : 12.5mm Knauf Soundshield



## STC 60

### 100mm Knauf Drywall Partition System

Face layer : 12.5mm Knauf Silentboard  
 Base layer : 12.5mm Knauf Soundshield  
 Metal Stud : 50mm Metal Stud  
 Acoustic Infill : 50mm Rockwool (60kg/m3)  
 Base layer : 12.5mm Knauf Soundshield  
 Face layer : 12.5mm Knauf Silentboard

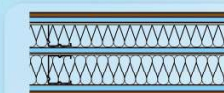


## STC 62

### 125mm Knauf Drywall Partition System

Face layer : 12.5mm Knauf Soundshield  
 Second layer : 12.5mm Knauf Silentboard  
 Base layer : 12.5mm Knauf Soundshield  
 Metal Stud : 50mm Metal Stud  
 Acoustic Infill : 50mm Rockwool (60kg/m3)  
 Base layer : 12.5mm Knauf Soundshield  
 Second layer : 12.5mm Knauf Silentboard  
 Face layer : 12.5mm Knauf Soundshield

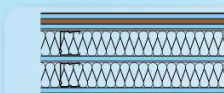
\* All systems shown were tested by HOKLAS accredited laboratory.



## STC 64

### 168mm Knauf Drywall Partition System

Face layer : 12.5mm Knauf Silentboard  
 Base layer : 12.5mm Knauf Soundshield  
 Metal Stud : 50mm Metal Stud  
 Acoustic Infill : 50mm Rockwool (60kg/m3)  
 Middle layer : 12.5mm Knauf Soundshield  
 Separation : 5mm Gap (Approx.)  
 Metal Stud : 50mm Metal Stud  
 Acoustic Infill : 50mm Rockwool (60kg/m3)  
 Base layer : 12.5mm Knauf Soundshield  
 Face layer : 12.5mm Knauf Silentboard



## STC 67

### 193mm Knauf Drywall Partition System

Face layer : 12.5mm Knauf Soundshield  
 Second layer : 12.5mm Knauf Silentboard  
 Base layer : 12.5mm Knauf Soundshield  
 Metal Stud : 50mm Metal Stud  
 Acoustic Infill : 50mm Rockwool (60kg/m3)  
 Middle layer : 12.5mm Knauf Soundshield  
 Separation : 5mm Gap (Approx.)  
 Metal Stud : 50mm Metal Stud  
 Acoustic Infill : 50mm Rockwool (60kg/m3)  
 Base layer : 12.5mm Knauf Soundshield  
 Second layer : 12.5mm Knauf Silentboard  
 Face Layer : 12.5mm Knauf Soundshield



### Upgrading of existing partitions with Knauf Silentboard

