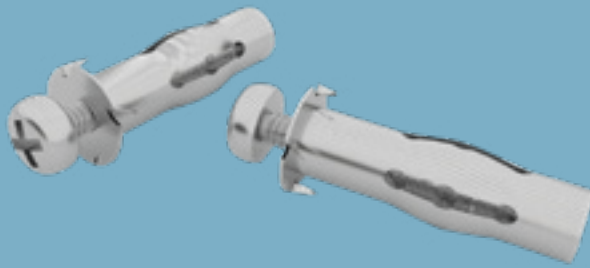


## Gypsum Board Dowel (CC)

Technical Data Sheet 12/2023



# Gypsum Board Dowel (CC)

## Dowel

### Product Description

Steel dowel used for hanging radiator, cabinet, air conditioner etc. on multiple layered gypsum board systems. It can bear the load of:

- 12 kg on suspended ceilings and
- 28 kg on wall applications

### Standards referred to

prEN 14566

### Fields of Application

- Hanging loads on gypsum wall partitions
- Hanging loads on gypsum suspending ceilings
- Hanging loads on gypsum wall claddings

### Properties

- Easy and clean installation

# Gypsum Board Dowel (CC)

## Dowel



### Technical Properties

Description	Diameter (mm)	Length (mm)	Thickness (mm)	Weight (kg/box)	Packaging (pcs./box)	Material Number
Gypsum Board Dowel (CC)	8	59	14 - 32	1,902	100	186080

## System Performance Values

Performance values as sound insulation, fire resistance etc. may differ acc. to the drywall system to be applied. Please check the performance values of the drywall systems;

[Knauf Technical Website](#)  
[Document Center](#)

## Application

Application should be done acc. to the Knauf Technical Brochures of the respective drywall system.

▶ 444 YAPI - 9274

▶ [www.knauf.com.tr](http://www.knauf.com.tr) / [www.teknik.knauf.com.tr](http://www.teknik.knauf.com.tr)

▶ [teknik@knauf.com](mailto:teknik@knauf.com)

Center: Knauf Moment Beştepe Office, Beştepe Mah. 32.Cadde No:1/212-218 06560 Beştepe-Yenimahalle  
/ ANKARA Tel: 0312 297 0100 Faks: 0312 266 4506