

## Masonry Party Wall Slab

September 2025

Build on us.



### Description

Masonry Party Wall Slab is a glass mineral wool slab, designed for use in masonry separating party walls, that offers thermal and acoustic performance.

It is non-combustible with the best possible Euroclass A1 reaction to fire classification, and is manufactured using our unique plant-based binder, ECOSE® Technology.

### Benefits

- › Designed to fully fill the party wall cavity to prevent party wall thermal bypass, contributing towards a zero effective U-value.
- › Suitable for use with a range of constructions registered in the Robust Details Handbook reducing the need for on-site acoustic testing.
- › Manufactured from mineral wool which provides higher levels of sound absorption and reduction than other mainstream insulants to reduce the sound transfer between dwellings.
- › Manufactured density of 18kg/m<sup>3</sup> (minimum).



NON-COMBUSTIBLE  
INSULATION



# Masonry Party Wall Slab

## Technical Specifications



### MASONRY PARTY WALL SLAB

Thickness (mm)	Density (kg/m <sup>3</sup> )	Thermal conductivity (W/mK)	Length (mm)	Width (mm)	Slabs per pack	Area per pack (m <sup>2</sup> )	Packs per pallet	GWP A1-A3 (kgCO <sub>2</sub> e/m <sup>2</sup> )	GWP A1-C4 (kgCO <sub>2</sub> e/m <sup>2</sup> )	GWP A1-A3 (kgCO <sub>2</sub> e/kg)	GWP A1-C4 (kgCO <sub>2</sub> e/kg)	Pallet product code
100	18.00	0.037	1200	455	12	6.552	20	1.13	1.60	0.75	1.07	2441353
75	18.00	0.037	1200	455	16	8.736	20	0.85	1.20	0.75	1.07	2441351

All dimensions are nominal.

EPD ID: S-P-10828 The declared unit is 1m<sup>2</sup> of unfaced glass mineral wool Masonry Party Wall Slab with R-value of 2.70 m<sup>2</sup>K/W (for a thickness of 100mm and a declared lambda of 0.037W/mK).

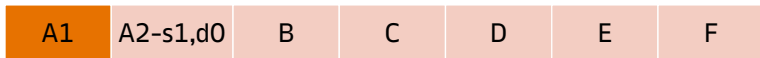
# Masonry Party Wall Slab

## Performance

THERMAL (W/mK)

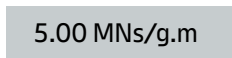


FIRE CLASSIFICATION

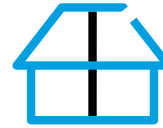


Euroclass reaction to fire classification

VAPOUR RESISTIVITY

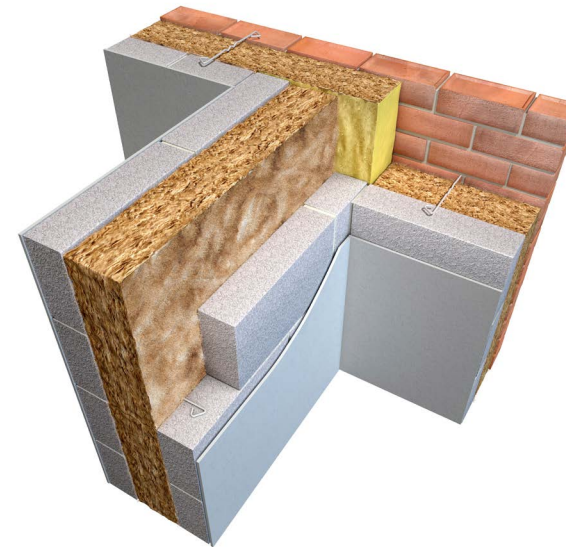


## Applications



Masonry Party Wall

## Typical Build-Ups



## Certification, accreditations and industry standards



# Masonry Party Wall Slab

## Application

In separating party walls insulation is required to prevent heat loss through convection via an unwanted chimney effect known as thermal bypass, and to reduce noise transfer between dwellings.

Masonry Party Wall Slab is used for the thermal and acoustic insulation of masonry separating party walls. It is installed as the walls are built, being friction-fitted between the inner and outer leaves of the wall and in between wall ties.

Masonry Party Wall Slab allows for a zero-effective U-value to be claimed in SAP and is compliant with a wide range of constructions included in the Robust Details Handbook reducing the need for on-site acoustic testing. Masonry Party Wall Slab is non-combustible.

## Standards and certification

Masonry Party Wall Slab has a product declaration made in conformity with the requirements of BS EN 13162:2012+A1:2015 and are manufactured in accordance with ISO 50001:2018 Energy Management Systems, ISO 14001:2015+A1:2024 Environmental Management Systems, ISO 45001:2023+A1 Occupational Health and Safety Management Systems, and ISO 9001:2015+A1:2024 Quality Management Systems.

All of our mineral wool products are made of non-classified fibres and are certified by EUCEB. EUCEB (European Certification Board of Mineral Wool Products - [www.euceb.org](http://www.euceb.org)) is a voluntary initiative by the mineral wool industry. It is an independent certification authority that guarantees that products are made of fibres which comply with the exoneration criteria for carcinogenicity (Note Q) of the Regulation (EC) 1272/2008.

## System Testing

Knauf Insulation maintains declared product characteristics and qualities which are defined in detail in its Declaration of Performances (DoPs) and product literature. The product literature also includes information relating to Knauf Insulation's requirements and recommendations for installation of its products when being used as part of a system.

Any party using, or planning to use, our products in a system (with or without system testing) where performance may be dependent on product characteristics not declared on our DoPs or our product literature, must contact our Technical Service Team.

Knauf Insulation will not accept liability for any failure in system performance due to product characteristics not declared on DoPs or product literature, or not agreed in a Service Level Agreement. In such an event, any warranty given in relation to those products will be invalidated.

## Real Performance

Glass and rock mineral wool are easier to install correctly than other insulants, such as rigid boards, because they adapt to any slight imperfections in the substrate and knit together, eliminating any air gaps. Mineral wool is engineered to adapt to any imperfections, and any settlement/movement over time, so it maintains close contact and preserves thermal performance for the life of the building.

Evidence shows the absence of air gaps is crucial to achieving real performance in the relevant application. Any insulation material that doesn't deliver 'as-built' thermal performance is failing in its primary purpose, and therefore presents an unnecessary risk as the construction industry seeks to close the performance gap.

## Durability

Masonry Party Wall Slab is odourless, rot proof, non-hygroscopic, does not sustain vermin and will not encourage the growth of fungi, mould or bacteria. The product will have a life equivalent to that of the structure in which it is incorporated.

# Masonry Party Wall Slab

## Sustainability

Masonry Party Wall Slab is manufactured with ECOSE® Technology, our unique plant based binder. It is low-carbon and generates low-VOCs, so it can be used to create better buildings - for occupiers, for installers and for the planet. ECOSE® provides the proven sustainability performance the industry needs, backed up by extensive testing and certification. ECOSE® is just one small element of our product proposition, but it makes a big difference.

All our glass mineral wool products have been awarded the DECLARE 'Red List Free' label. The Declare label is a third-party accreditation and is similar to a food nutrition label but for building products; it is a straightforward ingredient list and allows product transparency disclosure because it identifies where a product comes from and what it is made of. Declare 'Red List Free' certifies that there is no harmful chemical from the red list in these products.

Our glass mineral wool is made with up to 80% recycled content (including glass from windows, bottles and jars).

Masonry Party Wall Slab contains no ozone-depleting substances or greenhouse gases. The overall environmental performance of our products is reported in their EPDs (Environmental Product Declarations) which are available on our website. EPDs are available for all our products in accordance with ISO 14025:2023, ISO 21930:2017 and EN 15804+A2:2019.

We have received the BES6001(v4.0) 'Very Good' rating for all our mineral wool in our three plants, which proves that our products are made with constituent materials that are responsibly sourced.

Our 3-tier industry-leading compression-packaging technology allows us to load more product per pack or pallet, and therefore onto each truck that leaves our factories. This means less packaging used per m<sup>2</sup> of insulation, fewer vehicles on our roads, so less associated CO<sub>2</sub> emissions. It also means less transport, handling and storage space required for our customers.

Our individual products and the pallets they sit on are wrapped in low-density polyethylene (LDPE4) plastic, which is made of 30-50% (depending on the supplier) recycled plastic content and is fully recyclable.

## Handling & Storage

Masonry Party Wall Slab should be stored properly and handled in such a way as to ensure that the product remains clean and undamaged.

The polyethylene packs / shrink-wrapped pallets used for the supply of Masonry Party Wall Slab are designed for short-term protection only. For longer term protection on site, the product should either be stored indoors or under cover and off the ground. Masonry Party Wall Slab should not be left permanently exposed to the elements.

If the main hood is removed or damaged, the remaining packs should be kept under cover indoors or protected from the elements by a weatherproof cover. In coastal locations where weather is more extreme and bird damage is more common, use additional covering or store indoors.

The product must be protected from prolonged exposure to sunlight and stored dry and flat.

Masonry Party Wall Slab is light and easy to handle; care should be exercised to avoid crushing its edges or corners. If damaged, the product should be discarded. Damaged, contaminated or wet products must not be used.

During construction exposed areas of slabs should always be covered at the end of a day's work or in heavy rain. Polyethylene covers should be used to provide protection and prevent work from becoming saturated.

## Knauf Insulation Ltd

Stafford Road, St.Helens, Merseyside, WA10 3LZ Customer Service: 01744 766 766

*All rights reserved, including those of photomechanical reproduction and storage in electronic media. Extreme caution was observed when putting together and processing the information, text and illustrations in this document. Nevertheless, errors cannot be completely ruled out. The publisher and editors cannot assume legal responsibility or any liability for incorrect information and consequences thereof. The publisher and editors will be grateful for improvement suggestions and details of possible errors pointed out. For the most up-to-date document versions and product information, please always refer to our website.*