



Case Study

## ROLLING OUT LONG-TERM COMFORT FOR SUNSHINE COAST'S NEWEST COMMUNITY HUB

March 2026

### Project Name

Stockland Aura

### Products Used

Knauf Insulation Roof blanket (Foil Faced)

### Building Type

Commercial

### Application

Metal Roof

### Roofing Contractor

H&L Constructions

### Insulation Lamination Partner

Ecolife Solutions Pty Ltd.

## Build on us.



Declare.





Stockland Aura is a large-scale residential community project underway in the coastal region of the Sunshine Coast, Queensland. Situated at the foot of the iconic Glasshouse Mountains, the booming estate is already home to more than 10,000 residents, with the latest construction stage now underway featuring the build of a multi-building commercial retail precinct. Requiring strict adherence to thermal performance to ensure NCC compliance and deliver a comfortable build for high-occupancy spaces, Knauf Insulation's Roof blanket, 145mm thickness was specified for the 20,000m<sup>2</sup> facility, laminated with a high strength metal foil by specialist lamination partner, EcoLife Solutions.



### What was the challenge?

Delivering a compliant thermal envelope for a high-occupancy retail warehouse facing Queensland's year-round sub-tropical climate required a roof insulation system capable of delivering high levels of thermal performance while maintaining fire safety standards. Fire test compliance of 1530.3 was required on the final foil faced blanket along with Group 1 compliance. Individual components needed to achieve compliance to 1530.1 for the unfaced Roof blanket, and 1530.2 on the facing. With summer storms and high humidity being the norm, achieving condensation control and long-term durability were additional non-negotiable criteria. With installation taking place across multiple structures covering more than 20,000m<sup>2</sup> of metal roofing, streamlining on-site logistical efficiencies and installation were also an important consideration. The contractor sought a reliable solution that they could trust to elevate the project at every stage.

### What was the solution?

The Knauf Insulation Roof blanket 145mm thickness product was specified as the insulation for the metal roof system of the build. Offered standard as an unfaced roll product, the Roof blanket has been laminated with a high strength foil facing by EcoLife Solutions for this project. Applying the foil facing achieves condensation control, with a vapour barrier



preventing moisture from seeping through the roof while also protecting the integrity and durability of the insulation and system. At 145mm thickness, the Roof blanket delivers thermal performance of R3.6, significantly reducing internal heat gain inside the buildings to improve energy efficiency, aligning with the requirements of the specifier. The Roof blanket was used in conjunction with 115mm roof spacers to deliver a system R-value,  $R_t = 3.7$ . With occupant comfort a priority for the project, the Roof blanket also offers outstanding acoustic sound absorption, effectively diminishing the sound of torrential rain and storms.

To get the roof installed, H&L constructions undergo a detailed process to ensure installers' safety and a smooth installation. This starts off with wiring out the roof end-to-end with a rope and pulley system, then getting the edge protection installed, and getting the hand-over certificate for the wire. Once it's safe for the installers to come on the roof, the insulation rolls and roof spaces are craned up to the roof and the installation process is started. The insulation roll is laid out first with the foil faced downwards, followed by the roof spacers and locking in of the fasteners. This is followed by laying down the metal sheet to complete the installation process.

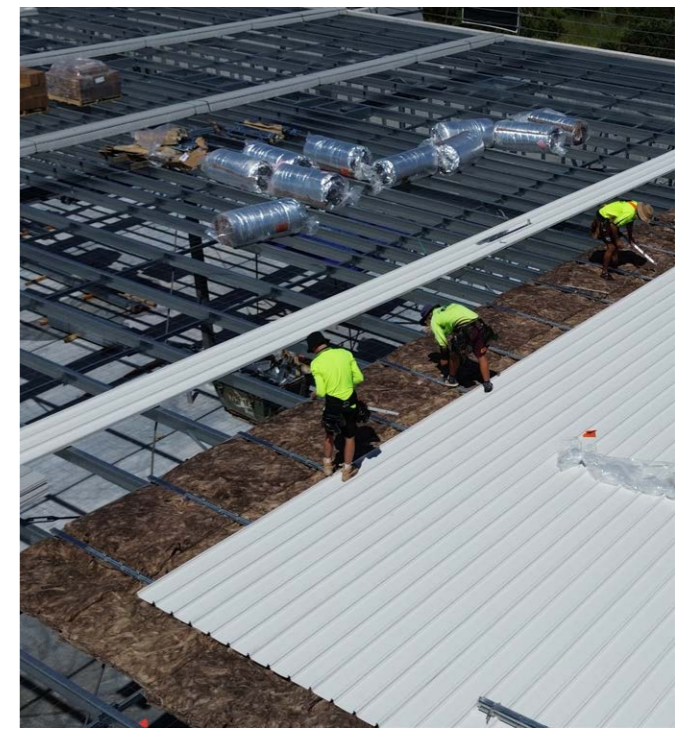
### Why Knauf Insulation?

Knauf Insulation was the trusted choice to deliver the key performance criteria required by the project, while also supporting a simple on-site installation. Manufactured with ECOSE® Technology, a plant-based binder free of added formaldehyde and harmful chemicals on the DECLARE® Red List, Knauf Insulation glasswool is soft to touch with low Volatile Organic Compounds (VOCs) for a pleasant experience for installers.

**"Knauf Insulation is far superior to other products. It's not itchy, it's not dusty."**

Hugh Pettigrove, Project Manager.

Made at a roll length of 10m, the Roof blanket is easy to handle, roll-out, and fit securely, an important feature when over 20,000m<sup>2</sup> needs to be covered.



# About Knauf Insulation Roof blanket

Knauf Insulation Roof blanket (unfaced) provides thermal and acoustic insulation for commercial roofs.

Condensation control can be achieved when the product is faced with foil of the appropriate duty classification.

The Knauf Insulation Roof blanket (unfaced) range includes a selection of R-values to provide builders, designers and installers the opportunity to choose the best thermal performance for their project.

- > Convenient roll lengths for easy install
- > Sound absorbing
- > TwinTech® – smooth finish on both sides
- > High thermal performance – year round comfort
- > Non-combustible
- > Saves energy – lower energy bills
- > No added formaldehyde
- > Soft to handle and install
- > Odourless



## ECOSE® Technology

A unique plant-based binder which contains no added formaldehyde or phenol. It is made from natural raw materials that are rapidly renewable and result in lower upfront carbon emissions compared to traditional formaldehyde-based binders. This makes our insulation soft to touch and easy to handle.



## TwinTech® Technology

An advancement in insulation manufacture – the dual forming technique enables thicker products for evolving building code requirements and ensures there is a smooth finish on both sides of the insulation for optimal product handling and appearance.



## Declare & Red List Free

Knauf Insulation's glasswool, free from Red List materials and certified for excellent air quality, features up to 80% recycled content and ECOSE® Technology, offering safer, eco-friendly building solutions.



For more information about Knauf Insulation's range of insulation products, visit:  
[www.knauf.com](http://www.knauf.com)

### Knauf Insulation Pty Ltd

23 Corporate Drive, Cannon Hill,  
Queensland, 4170

KIAU03261786CS<sup>(V0.4)</sup>

### Contact Us

Phone: 07 3393 7300  
Email: [info.au@knaufinsulation.com](mailto:info.au@knaufinsulation.com)

**Build on us.**