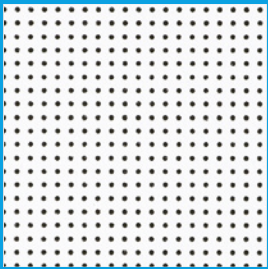


KNAUF

VARIOLINE Symetra



© Knauf Ceiling Solutions

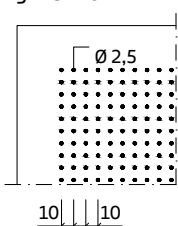
Build on us.

VARIOLINE Symetra is a fleece-coated, acoustic mineral tile that provides up to Class A sound absorption

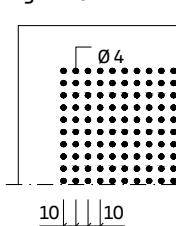
- Available in a wide range of edge details to suit all design and installation needs
- Provides design flexibility with five printed perforated surface patterns to choose from
- Ideal for offices, foyers and retail spaces

Characteristics	Detailed information							
Edge details		VARIOLINE Symetra (Alpha)		VARIOLINE Symetra (dB)	VARIOLINE Symetra (Acoustic)	VARIOLINE Symetra (HD)		
		Board	Tegular 24/90	Tegular 15/90	Vector	SL2	Finesse	
Thickness (mm)		19	19	19	24	19	19	
Dimensions (mm)		600 x 600 625 x 625 1200 x 600 1250 x 625	600 x 600 625 x 625 1200 x 600	600 x 600 1200 x 600	600 x 600 625 x 625 1200 x 600	On Request	600 x 600 625 x 625 1200 x 600 1250 x 625	
System		Exposed demountable - System C			Semi-concealed tiles, demountable - System C	Semi-concealed planks, demountable - System I.3 (Bandraaster - System I.2 / Corridor - System F.2)	Concealed, demountable - System A.2 / A.3	
Weight		3.3 kg/m² (Board, Tegular 24/90, Tegular 15/90) 5.0 kg/m² (SL2) 5.2 kg/m² (Finesse) 8.6 kg/m² (Vector)						
Colour & design		White, with printed patterns Rg 2.5-10, Rg 4-10, Rg 4-16, Rg 4-16 / 4x4, RS 15-20						
Sound absorption		EN ISO 354 $\alpha_w = 0.95$ (Board, Tegular 24/90, Tegular 15/90) as per EN ISO 11654 - Class A $\alpha_w = 0.65$ (H) (Vector, SL2) as per EN ISO 11654 - Class C $\alpha_w = 0.90$ (Finesse) as per EN ISO 11654 - Class A						
		Frequency f (Hz)	125	250	500	1000	2000	4000
		α_p Board, Tegular 24/90, Tegular 15/90	0.50	0.80	0.90	0.90	1.00	1.00
		α_p Vector	0.45	0.40	0.60	0.80	0.95	1.00
		α_p SL2	0.50	0.45	0.60	0.85	0.95	0.95
		α_p Finesse	0.50	0.70	0.80	0.90	1.00	1.00
		NRC = 0.90 (Board, Tegular 24/90, Tegular 15/90) as per ASTM C 423 NRC = 0.70 (Vector, SL2) as per ASTM C 423 NRC = 0.85 (Finesse) as per ASTM C 423						
Sound attenuation		$D_{n,f,w} = 28$ dB (Board, Tegular 24/90, Tegular 15/90) as per EN ISO 717-1 $D_{n,f,w} = 34$ dB (Finesse) as per EN ISO 717-1 $D_{n,f,w} = 38$ dB (Vector) as per EN ISO 717-1 $D_{n,f,w} = 40$ dB (SL2) as per EN ISO 717-1		$CAC = 29$ dB (Board, Tegular 24/90, Tegular 15/90) as per ASTM E 413-10 $CAC = 35$ dB (Finesse) as per ASTM E 413-10 $CAC = 39$ dB (Vector) as per ASTM E 413-10				
Fire reaction		Euroclass A2-s1, d0 as per EN 13501-1						
Thermal conductivity		$\lambda = 0.040$ W/mk (Board, Tegular 24/90, Tegular 15/90) as per EN 12667 $\lambda = 0.075$ W/mk (Vector) as per EN 12667 $\lambda = 0.060$ W/mk (SL2, Finesse) as per EN 12667						
Air permeability		PM1 (≤ 30 m ³ /hm ²) as per DIN 18177						
Humidity resistance		95% RH						
Indoor air quality / Sustainability								36.8-49.1% (2023)

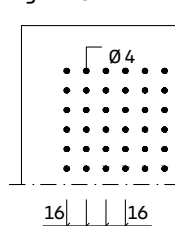
Rg 2.5-10



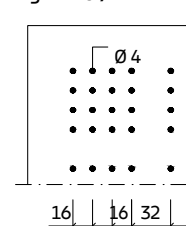
Rg 4-10



Rg 4-16



Rg 4-16 / 4x4



RS 15-20

