

FactoryClad Roll 40

September 2025

Build on us.

Description

FactoryClad Roll 40 is a glass mineral wool roll, designed for use in built-up metal roofs and walls. It offers thermal conductivity of 0.040 m²K/W. FactoryClad Roll 40 is non-combustible with the best possible Euroclass A1 reaction to fire classification, and is manufactured using our unique plant-based binder, ECOSE® Technology.

Benefits

- › Wide range of thicknesses, up to 220mm.
- › High tear strength, for ease of installation and durability.
- › Rolls are 1200mm wide for speed of installation.
- › Manufactured from mineral wool which provides the best levels of sound absorption and reduction compared to other mainstream insulants to reduce the reverberation of internal sound when used in conjunction with metal liner sheets.



NON-COMBUSTIBLE
INSULATION

with ECOSE[®]
TECHNOLOGY



FactoryClad Roll 40

Technical Specifications

FACTORYCLAD ROLL 40 (UNCUT)

| Thickness (mm) | Thermal conductivity (W/mK) | R-value  m ² K/W | R-value  m ² K/W | Length (m) | Width (mm) | Area per pack (m ²) | Packs per pallet | Product Code |  |
|----------------|-----------------------------|--|--|------------|------------|---------------------------------|------------------|--------------|---|
| 220 | 0.040 | 5.10 | 5.50 | 4.35 | 1200 | 5.220 | 24 | 2411649 | |
| 200 | 0.040 | 4.65 | 5.00 | 4.85 | 1200 | 5.820 | 24 | 2402003 | |
| 180 | 0.040 | 4.15 | 4.50 | 6.26 | 1200 | 7.512 | 24 | 2402002 | |
| 160 | 0.040 | 3.70 | 4.00 | 7.05 | 1200 | 8.460 | 24 | 2402001 | |
| 140 | 0.040 | 3.25 | 3.50 | 8.02 | 1200 | 9.624 | 24 | 2402000 | |
| 120 | 0.040 | 2.75 | 3.00 | 9.40 | 1200 | 11.280 | 24 | 2401999 | |
| 100 | 0.040 | 2.30 | 2.50 | 11.25 | 1200 | 13.500 | 24 | 2401998 | |
| 80 | 0.040 | 1.85 | 2.00 | 14.10 | 1200 | 16.920 | 24 | 2401997 | |

All dimensions are nominal



South African R-values calculated assuming 23°C mean temperature.



Euro R-values based on 10°C mean temperature, calculated according to requirements of λ90:90 for declaring thermal performance and following the European norm standard including audited factory production control.

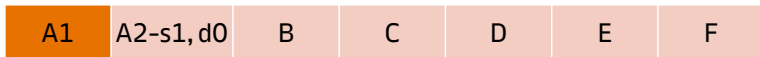
FactoryClad Roll 40

Performance

THERMAL m²K/W



FIRE CLASSIFICATION



Euroclass reaction to fire classification - in accordance to SANS 53501-1

VAPOUR RESISTIVITY



Certification, accreditations and industry standards



Applications

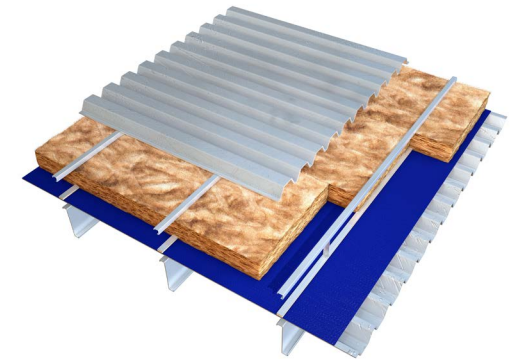
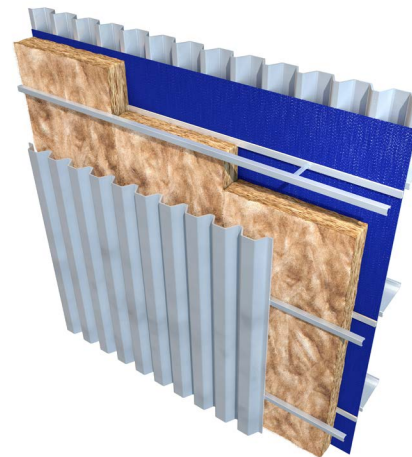


Built-up metal roofs



Built-up metal walls

Typical Build-Ups



FactoryClad Roll 40

Application

FactoryClad Roll 40 is used for the thermal and acoustic insulation of roofs and walls in profiled metal clad buildings. Profiled metal roof and wall systems typically consist of a low profile metal inner liner sheet, separated from an outer, higher profile, metal weather sheet. The cavity between them is filled with a layer of thermal insulation to provide the specified level of thermal performance. FactoryClad Roll 40 offers different levels of thermal conductivity to suit project requirements and come with a Euroclass A1 reaction to fire classification, which can potentially reduce insurance premiums compared to foam composite panels.

Built-up metal roofing systems are typically assembled on site with the design and components used forming part of a proprietary system. FactoryClad Roll 40 is manufactured at 1200mm wide to suit commonly used rail and bracket systems designed for use in twin skin profiled metal cladding systems and standing seam roofs.

Standards and Certification

FactoryClad Roll 40 has a product declaration made in conformity with the requirements of BS EN 13162:2012+A1:2015 and is manufactured in accordance with ISO 50001:2018 Energy Management Systems, ISO 14001:2015+A1:2024 Environmental Management Systems, ISO 45001:2023+A1 Occupational Health and Safety Management Systems, and ISO 9001:2015+A1:2024.

All of our mineral wool products are made of non-classified fibres and are certified by EUCB. EUCB (European Certification Board of Mineral Wool Products - www.euceb.org) is a voluntary initiative by the mineral wool industry. It is an independent certification authority that guarantees that products are made of fibres which comply with the exoneration criteria for carcinogenicity (Note Q) of the Regulation (EC) 1272/2008.

Thermal Modelling

The U-value of a proprietary built element (rainscreen façade/ masonry cavity wall/garage soffit etc.) or system is dependent on the material properties and the degree of thermal bridging in the system. Calculations should be created using 2D or 3D modelling programs which comply with the methodologies detailed in BS EN ISO 6946:2017 or BS EN ISO 10211:2017 and using guidance from BR443:2019.

We offer simplified calculations to BS EN ISO 6946:2017 and where required numerically modelled U-value calculations using software that is compliant with BS EN ISO 10211:2017.

System Testing

Knauf Insulation maintains declared product characteristics and qualities which are defined in detail in its Declaration of Performances (DoPs) and product literature. The product literature also includes information relating to Knauf Insulation's requirements and recommendations for installation of its products when being used as part of a system.

Any party using, or planning to use, our products in a system (with or without system testing) where performance may be dependent on product characteristics not declared on our DoPs or our product literature, must contact our Technical Services Team.

Knauf Insulation will not accept liability for any failure in system performance due to product characteristics not declared on DoPs or product literature, or not agreed in a Service Level Agreement. In such an event, any warranty given in relation to those products will be invalidated.

Real Performance

Glass and rock mineral wool are easier to install correctly than other insulants, such as rigid boards, because they adapt to any slight imperfections in the substrate and knit together, eliminating any air gaps. Mineral wool is engineered to adapt to any imperfections, and any settlement/movement over time, so it maintains close contact and preserves thermal performance for the life of the building.

Evidence shows the absence of air gaps is crucial to achieving real performance in the relevant application. Any insulation material that doesn't deliver 'as-built' thermal performance is failing in its primary purpose, and therefore presents an unnecessary risk as the construction industry seeks to close the performance gap.

Durability

FactoryClad 40 is odourless, rot proof, non-hygroscopic, do not sustain vermin and will not encourage the growth of fungi, mould or bacteria. The product will have a life equivalent to that of the structure in which it is incorporated.

FactoryClad Roll 40

Sustainability

FactoryClad Roll 40 is manufactured with ECOSE® Technology, our unique plant-based binder. It is low-carbon and generates low-VOCs, so it can be used to create better buildings - for occupiers, for installers and for the planet. ECOSE® provides the proven sustainability performance the industry needs, backed up by extensive testing and certification. ECOSE® is just one small element of our product proposition, but it makes a big difference.

All our glass mineral wool products have been awarded the DECLARE 'Red List Free' label. The Declare label is a third-party accreditation and is similar to a food nutrition label but for building products; it is a straightforward ingredient list and allows product transparency disclosure because it identifies where a product comes from and what it is made of. Declare 'Red List Free' certifies that there is no harmful chemical from the red list in these products.

Our glass mineral wool is made with up to 80% recycled content (incl. glass from windows, bottles and jars).

FactoryClad Roll 40 contains no ozone-depleting substances or greenhouse gases. The overall environmental performance of our products is reported in their EPDs (Environmental Product Declarations) which are available on our website. EPDs are available for all our products in accordance with ISO 14025:2023, ISO 21930:2017 and EN 1580+A2:2019.

We have received the BES6001(v4.0) 'Very Good' rating for all our mineral wool in our three plants, which proves that our products are made with constituent materials that are responsibly sourced.

Our 3-tier industry-leading compression-packaging technology allows us to load more product per pack or pallet, and therefore onto each truck that leaves our factories. This means less packaging used per m² of insulation, fewer vehicles on our roads, so less associated CO₂ emissions. It also means less transport, handling and storage space required for our customers.

Our individual products and the pallets they sit on are wrapped in low-density polyethylene (LDPE4) plastic, which is made of 30-50% (depending on the supplier) recycled plastic content and is fully recyclable.

Handling & Storage

FactoryClad Roll 40 should be stored properly and handled in such a way as to ensure that the product remains clean and undamaged.

The polythene packs / shrink-wrapped pallets used for the supply of FactoryClad Roll 40 are designed for short-term protection only. For longer term protection on site, the product should either be stored indoors or under cover and off the ground. FactoryClad Rolls should not be left permanently exposed to the elements.

If the main hood is removed or damaged, the remaining packs should be kept under cover indoors or protected from the elements by a weatherproof cover. In coastal locations where weather is more extreme and bird damage is more common, use additional covering or store indoors.

The product must be protected from prolonged exposure to sunlight and stored dry and flat.

FactoryClad Roll 40 is light and easy to handle; care should be exercised to avoid crushing their edges. If damaged, the product should be discarded. Damaged, contaminated or wet product must not be used.

During construction exposed areas of rolls should always be covered at the end of a day's work or in heavy rain. Polyethylene covers should be used to provide protection and prevent work from becoming saturated.

Knauf Insulation Ltd

Stafford Road, St.Helens, Merseyside, WA10 3LZ Enquiries: +27 647525029

All rights reserved, including those of photomechanical reproduction and storage in electronic media. Extreme caution was observed when putting together and processing the information, text and illustrations in this document. Nevertheless, errors cannot be completely ruled out. The publisher and editors cannot assume legal responsibility or any liability for incorrect information and consequences thereof. The publisher and editors will be grateful for improvement suggestions and details of possible errors pointed out. For the most up-to-date document versions and product information, please always refer to our website.