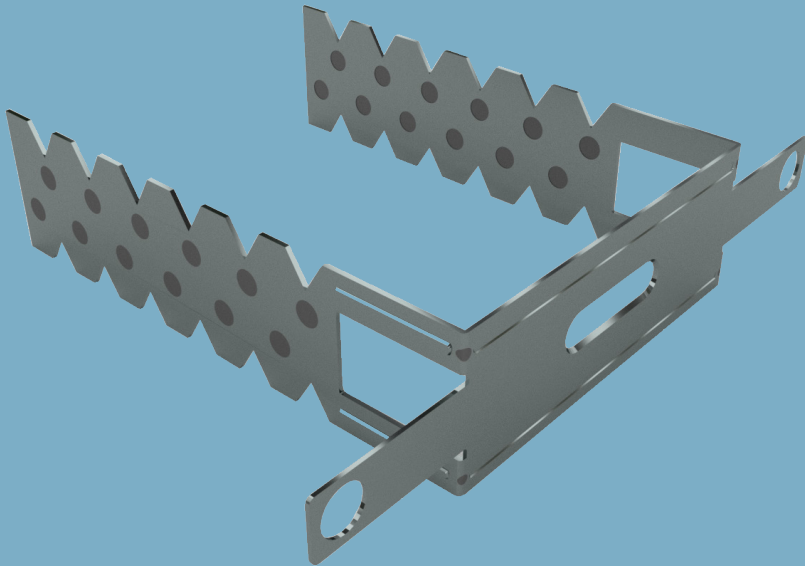


## Knauf Direct Hanger

Technical Data Sheet 12/2023



## Knauf Direct Hanger

Hanger element

### Product Description

Hanger used for connecting the ceiling C channel to the ceiling or wall.

### Storage

- Direct contact with water should be avoided.
- Packages should be stored in flat, dry and clean areas.

### Standard

-

### Fields of Application

- Suspended Ceiling Systems
- Wall Cladding Systems

### Properties

- Clean and easy installation

**Technical Data**

Description	Dimensions (cm)	Thickness (mm)	Standard
Direct Hanger - TC 60 / 27	5	0,8	-
	7,5		
	12		
	15	1	
	20		
	30		
Direct Hanger - TC 49 / 15 (Optimum)	5	0,8	
	7,5	1	
	12		
	15		

**Product Range**

Description	Length (cm)	Weight (kg/pcs.)	Packaging Unit (pcs./pallet)	Material Number
Direct Hanger	5	0,040	100	194504
	7,5	0,060	100	141243
	12	0,080	100	148583
	15	0,090	100	141244
	20	0,110	100	88884
	30	0,160	100	141245
Direct Hanger - TC 49 / 15 (Optimum)	5	0,035	100	171256
	7,5	0,045	100	171258
	12	0,070	100	171259
	15	0,085	100	171262

### System Performance Values

Performance values as sound insulation, fire resistance etc. may differ acc. to the drywall system to be applied. Please check the performance values of the drywall systems;

[Knauf Technical Website](#)  
[Document Center](#)

### Application

Application should be done acc. to the Knauf Technical Brochures of the respective drywall system.

▶ 444 YAPI - 9274

▶ [www.knauf.com.tr](http://www.knauf.com.tr) / [www.teknik.knauf.com.tr](http://www.teknik.knauf.com.tr)

▶ [teknik@knauf.com](mailto:teknik@knauf.com)

Center: Knauf Moment Beştepe Office, Beştepe Mah. 32.Cadde No:1/212-218 06560 Beştepe-Yenimahalle / ANKARA Tel: 0312 297 0100 Faks: 0312 266 4506