

## Metal Profiles

### Suspended Ceiling Systems

Product-Data-Sheet

04/2026



## Product Description

Knauf metal profiles are precision-engineered, high-quality steel sections that are used to form the metal substructure of the Knauf Suspended Ceiling Systems. All metal sections produced from high-grade hot dip galvanized steel coils with the cold-rolled forming process in United Arab Emirates

### The main design criteria's for Knauf metal sections are:

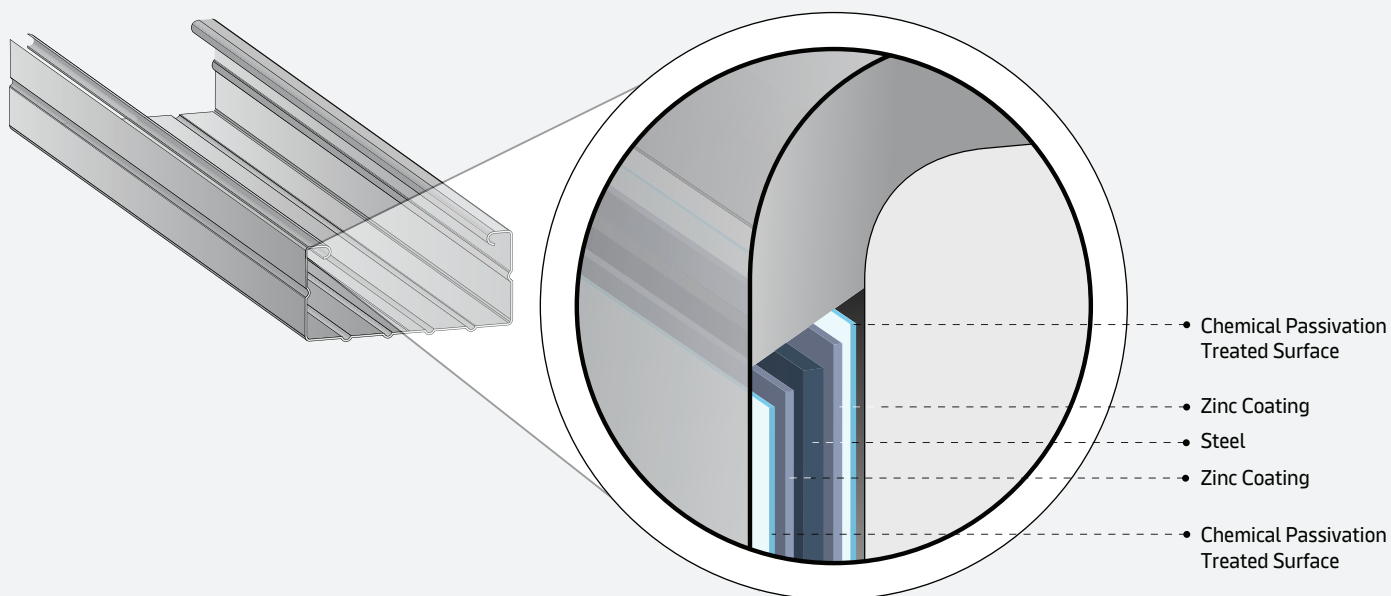
- **Quality:** Knauf only works with ISO 9001 certified raw material suppliers to guarantee its steel quality. High grade hot dip galvanized zinc coating (min. Z140 class) provides required protection against corrosion.
- **Sustainability:** Knauf is committed to environmental excellence, ensuring its production facilities and raw material partners adhere to ISO 14001:2015 standards for Environmental Management.
- **Simplicity:** Minimum amount of accessories and 'twist to fit' studs and channels are designed to make the installer's job as simple as possible.
- **Compatibility:** Knauf metal sections are specially designed to work and perform together with Knauf gypsum boards and accessories to create complete, tested and certified systems.
- **Variety:** A ceiling system which complies with EN-BS and another ceiling system which complies with ASTM specifications. Please contact us for other thicknesses & coating options.
- **Transparency:** All dimensions, thicknesses, lengths, coating, production dates, date & timing, country of origin, & manufacturing standard is printed.

## Metal Profiles Raw Material Specification

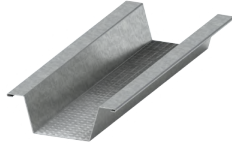
<b>Steel</b>	<b>Quality Classification</b>	:	DX51D+Z140 as per EN 103 27: 2004
	<b>Yield Strength</b>	:	295 Mpa
	<b>Tensile Strength</b>	:	345Mpa
	<b>Elongation in 80mm</b>	:	25%
	<b>Hardness (HRB)</b>	:	64
<b>Protection</b>	<b>Method</b>	:	Hot Dip Galvanization
	<b>Quality</b>	:	98% Zinc (Zn)
	<b>Coating Classification</b>	:	Z140 as per ASTM A653
	<b>Coating Thickness</b>	:	140gr/m <sup>2</sup> both sides 10µ m single side
	<b>Coating Finish</b>	:	Regular Crushed Spangle
	<b>Surface Quality</b>	:	Skin passed
	<b>Surface Treatment</b>	:	Chromated

\*Z140 is the standard coating thickness for Knauf Suspended Ceiling Systems profiles. Higher coating thicknesses are available upon request. Contact Knauf sales team for availability and delivery times.

## Steel Character



## Ceilings



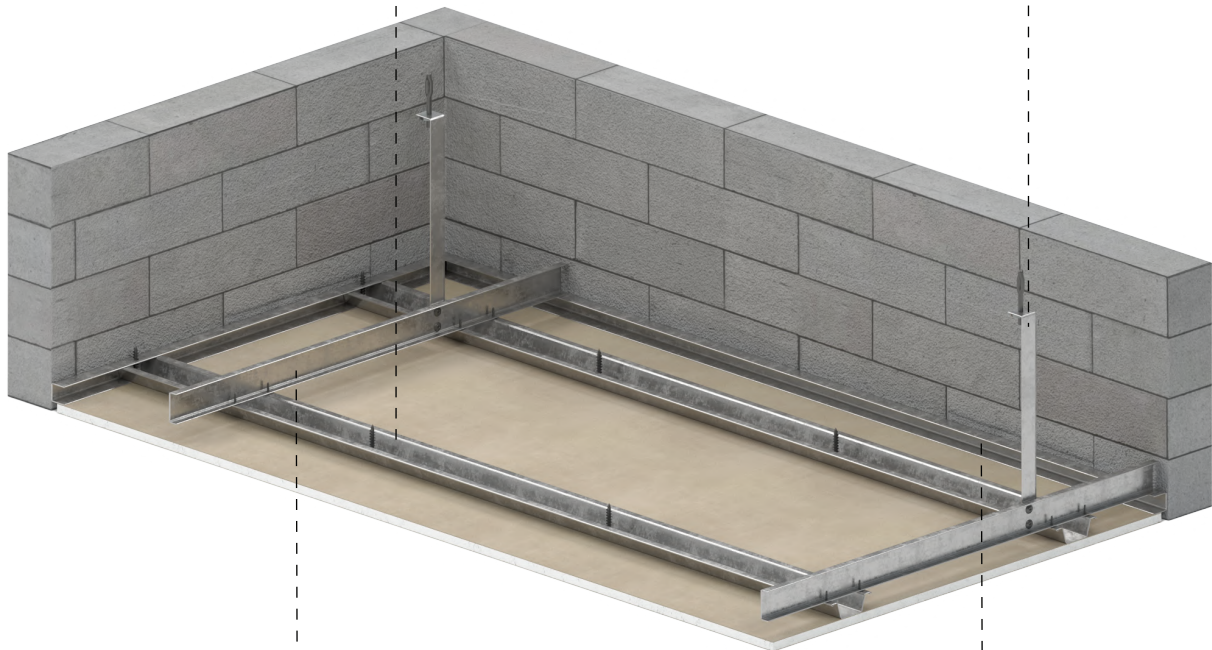
### **Knauf Hat Furring Channel**

Galvanized lightweight steel sections to be used as furring channels for conventional drywall ceiling and wall lining systems.



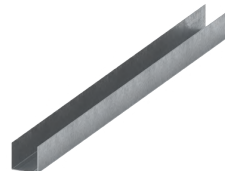
### **Knauf L Angle Channel**

Galvanized lightweight steel section to be used as perimeter framing for conventional drywall ceiling systems



### **Knauf Main Channel**

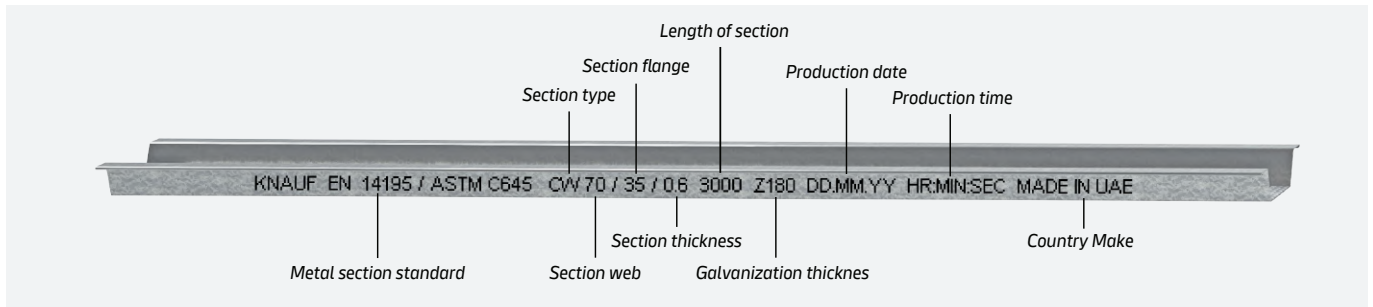
Galvanized lightweight steel section to be used as main channels for conventional drywall ceiling systems



### **Knauf UD 28/27 Channels**

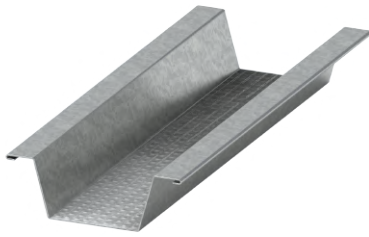
U-Shaped channels used for perimeter framing for Knauf D11 Ceiling systems

## How to Identify a Metal Section On-Site

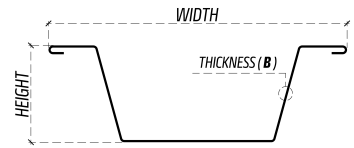


Example use of Knauf metal profiles in partitions

## Knauf Hat-Furring Channel



Hat Furring Channel Section



Hat shaped galvanized lightweight steel sections to be used as furring channels for drywall ceiling systems.

Mat. Code	Channel Type	Channel Web (A)(mm)	Channel Thickness (B)(mm)	Channel Flange (C)(mm)	Channel Length (mm)	Weight (kg/m)	Zinc Coating <sup>(1)</sup> Class (g/m <sup>2</sup> )
507059	Knauf Hat Furring Channel 67 x 22 x 0.5mm)	67	0.5	22	3000	0.4	140

(1): Z180 is the standard retail zinc coating thickness sufficient for interior drywall applications. Higher zinc coated channel production also possible. For customized zinc coating requirements please contact Knauf LLC Sales Team.

## Customer Service

UAE Tel: +971 4 33771700  
8:00 - 17:30 (UAE Time)  
Email:GCCcustomer.care@knauf.com  
Email: GCCtechnical.care@knauf.com

## HQ Address

Knauf LLC  
Units B9 & B10 - LIU 6  
Dubai Silicon Oasis  
Dubai, UAE

## Plant Address

P.O.Box 50006  
Ras Al Khaimah, U.A.E.  
Tel: +971 7 268 9837  
Fax: +971 7 221 5301

## Plant Address

Plot no - RY-PH02-M3-008  
Raysut - WGS-84-Zone 39  
Salalah Free Zone  
Salalah, Dhofar, Oman



### Observe safety data sheet!

For safety data sheets and CE labelling see  
[www.Knauf.com](http://www.Knauf.com)



Tender texts for all Knauf systems and products with export functions for Word and PDF.



Videos for Knauf systems and products can be found under the following link:  
[youtube.com/knauf](https://youtube.com/knauf)



All information and documents from Knauf GCC are always up-to-date,

## Knauf GCC

Dubai, United arab Emirates

## Hotline

800 - KNAUF(56283)

[www.knauf.com](http://www.knauf.com)

Subject to technical changes. The current edition applies. The information contained herein corresponds to our current state of the art. The generally recognised rules of construction technology, relevant standards, guidelines and trade regulations must be observed by the contractor in addition to the processing instructions. Our warranty relates only to the flawless quality of our material. Consumption, quantity and execution data are empirical values that cannot be transferred without further ado in the event of deviating conditions. All rights reserved. Changes, reprinting and photomechanical and electronic reproduction, even in extracts, require our express authorisation.

The structural, static and physical properties of Knauf systems can only be guaranteed if only Knauf system components or products recommended by Knauf are used.

**Build on us.**