

# KNAUFINSULATION



## HIGH PERFORMANCE, NON-COMBUSTIBLE ACOUSTIC INSULATION



LOW CARBON



NO HARMFUL  
INGREDIENTS



LOW VOC



MOISTURE  
RESISTANCE



**Build on us.**

**Innovation and production made possible by the largest and most advanced glasswool manufacturing facility in Malaysia.**



**Plant size**  
40+ acres  
(164,400 m<sup>2</sup>)



**Production since**  
April 2021



**Employees**  
230+



## **SOLUTIONS SPECIFIC TO MALAYSIA**

Recognising Malaysia's unique climate and insulation needs, Knauf Insulation is attuned to Malaysia's tropical environment and specific construction demands.

Our products are tailored to efficiently address the specific climatic conditions of Malaysia, emphasising sustainability and lightweight solutions that surpass conventional insulation standards.

This comprehensive range ensures optimal thermal comfort and energy efficiency, meeting specific requirements across commercial, industrial, and residential sectors, for both new and existing buildings.



**Knauf Insulation is part of the Knauf Group, a global market leader in the field of sustainable lightweight construction.**

**Knauf Group**

**>€16bn**  
turnover

**41,500+**  
employees worldwide

**300**  
plants & offices

**90+**  
countries



**Knauf Insulation**



**>€2.5bn**  
turnover



**6000+**  
employees worldwide



**28**  
plants & offices



**40+**  
countries

# Proven Comfort through Smarter Insulation



## THE IMPORTANCE OF ACOUSTIC COMFORT

Across Southeast Asia, urbanisation and high-density house have intensified concerns about noise within residential environments. Recent regional reviews<sup>^</sup> confirm that many homes are exposed to sound levels exceeding recommended limits, with traffic, neighbourhood activity, and shared spaces identified as key contributors. The impact of such persistent noise goes beyond inconvenience.

As expectations for healthier and more comfortable living spaces rise, acoustic comfort has become a defining measure of residential quality. This elevates the role of internal partition design, where effective insulation is critical to controlling airborne noise transmission.

<sup>^</sup> <https://link.springer.com/article/10.1007/s11356-025-36473-6>



## PROVEN PERFORMANCE OF GLASSWOOL

A common assumption in building design is that higher-density materials automatically deliver better acoustic insulation. In practice, this is not always the case. Acoustic performance depends on how effectively the insulation absorbs and dissipates airborne sound energy across different frequencies, rather than on density alone.

Comparative testing demonstrates this clearly - a partition with 16 kg/m<sup>3</sup> glass mineral wool achieved 45 Rw dB, which is higher than systems using rock mineral wool at 46 kg/m<sup>3</sup> (44 Rw dB). The results show that while rock mineral wool becomes less effective at higher densities due to reduced sound absorption capacity, glass mineral wool continues to provide efficient absorption across the critical frequency range.

16kg/m <sup>3</sup> Glass Mineral Wool	45 Rw dB
46kg/m <sup>3</sup> Rock Mineral Wool	44 Rw dB

### SOUND REDUCTION INDEX

\*Comparative acoustic testing (conducted by Knauf Insulation) shows a partition with 16kg/m<sup>3</sup> glass mineral wool achieved 45 Rw dB, outperforming rock mineral wool at 46kg/m<sup>3</sup> (44 Rw dB).

# Features and benefits of Knauf Insulation glasswool

From manufacture to installation, **there is innovation at every stage.**



**THERMALLY EFFICIENT**

The **thermal properties** of Knauf Insulation glasswool products act as a barrier to the external heat, limiting heat gain through roofs and walls in tropical buildings. Buildings stay at a comfortable temperature all year-round.



**MADE WITH RECYCLED GLASS**

Our insulation is made from **up to 80% recycled glass**. Our new generation furnace uses more grades of glass than glass furnaces, taking more waste out of our environment.



**SUSTAINABLY MANUFACTURED**

**ECOSE® Technology** is a sustainable, plant-based binder with **no added formaldehyde**. The natural, earthy brown colour comes from no added dyes or colours.



**RIGIDITY**

Offering higher rigidity, making it easier for installers to handle during installation. **Manufactured with TwinTech® Technology**, an innovative process which gives the insulation a smooth finish on both sides.



**LOW VOCs**

Knauf Insulation glasswool is supported by **Eurofins Indoor Air Comfort Gold** certification as an 'outstanding material' with low levels of VOCs (Volatile Organic Compounds) according to Indoor Air Quality Emissions certification.



**EASY TO HANDLE**

Our insulation is **super-soft**, making it easier to handle and install. There's no odour, less dust and less itch than traditional glasswool insulation.





## REDUCES ENERGY BILLS

By insulating a building properly, energy can be saved from the air-conditioning system when cooling a warm building and when heating during winter. Knauf Insulation glasswool **saves energy and saves money.**



## WATER REPELLENT

Engineered for longevity - our **DriTherm® Technology boasts silicone treatment**, designed to resist moisture, particularly important in humid climates.



## ACOUSTIC PERFORMANCE

Knauf Insulation glasswool products will improve the **acoustic performance** of the building in which they have been installed by absorbing the transfer of unwanted noise from external sources and between adjoining rooms, helping create peaceful and quiet buildings.



## NON-COMBUSTIBLE

Knauf Insulation glasswool is certified as **non-combustible** and will not contribute to fire spread.

Tested in accordance with:

- B.S. 476: Part 4 Non-combustibility, and BOMBA Class '0'
- B.S. 476: Part 7 Surface spread of flame
- B.S. 476: Part 6 Fire propagation



## COMPRESSION PACKED

Our industry leading **compression packaging technology** enables us to compress our insulation with up to 10:1 ratio in terms of volume of space which can be insulated compared to the volume of the packaged product. This means less handling, less storage space, less packaging used and less transport.



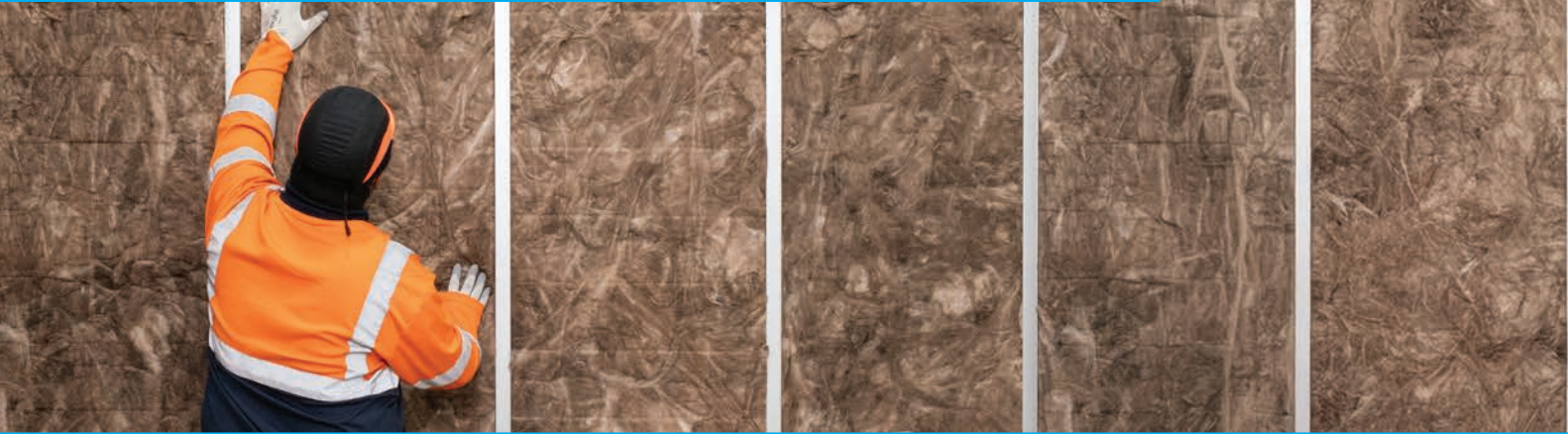
## NO HARMFUL INGREDIENTS

Knauf Insulation products have been awarded the Declare Red List Free label, where 100% of the ingredients are disclosed and **do not contain any Red List chemicals.**



# NO GAPS. NO COMPROMISE.

THE FRICTION FIT SOLUTION FOR 610MM STUDS.



## A PERFECT FRICTION FIT, ENGINEERED FROM ON-SITE FEEDBACK.



INTERNAL PARTITION  
APPLICATIONS

As a leader in innovation, Knauf Insulation is committed to evolving our products to meet the real-world needs of construction professionals. We listened to direct feedback from the builders, installers, and architects who use our products every day.

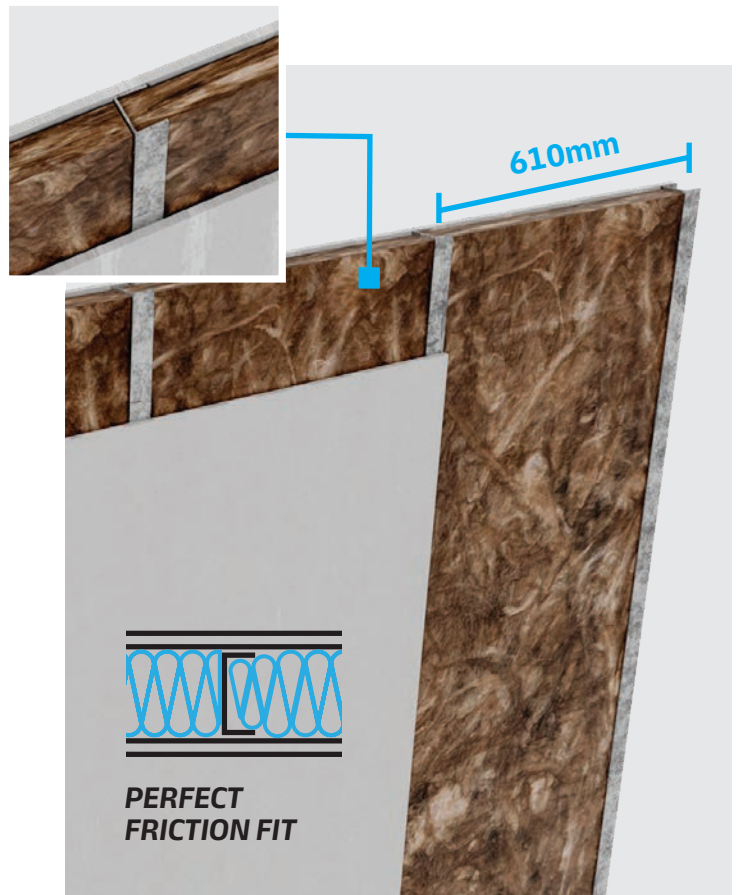
### THE OPPORTUNITY FOR INNOVATION.

In internal partition systems with specific stud layouts, aligning insulation to framing is essential to minimise thermal bridging, and maintain acoustic integrity. We saw an opportunity to create a purpose-built solution to make your job faster and more efficient.

### INTRODUCING THE 610MM FRICTION FIT SOLUTION.

Knauf Insulation has developed a purpose-built batt designed for 610mm studs frames. This friction-fit solution installs quickly and securely, without trimming or pinning.

**This is the new standard for 610mm walls. A snug, friction fit that's built and engineered to stay.**



Scan the QR code  
to learn more.



# GET THE JOB DONE FASTER AND BETTER.

## EDGE-TO-EDGE COVERAGE. DESIGNED FOR PERFORMANCE.

### THE 610MM FRICTION FIT ADVANTAGE

Knauf Insulation's 610mm partition batt is the premium, innovative solution for professionals. It's designed to friction fit perfectly within the C channels, delivering complete cavity coverage and guaranteed performance on every install.



### NO GAPS, MAXIMUM EFFICIENCY.

Achieve a perfect friction fit that eliminates pinning, trimming, and waste. The 610mm batt is engineered for 100% cavity fill, providing edge-to-edge coverage that saves significant on-site labour time and accessory costs.



### DESIGNED WITH INSTALLERS IN MIND.

Experience a faster, cleaner installation with a lightweight yet rigid batt that's easy to handle. Our ECOSE® Technology binder ensures a low-dust, less itch experience, while the longer folded batt option means greater coverage in a single piece.



### FULL PERFORMANCE, NO COMPROMISE.

Deliver projects with confidence. The gap-free fit guarantees tested acoustic and thermal performance, eliminating bridging and meeting BCA and Green Mark standards. It's backed by the industry's most trusted certifications, including **EUCEB**, **ISO 9001**, **GreenRate Level A**, and **DECLARE 'Red List Free'**.



Ask for the 610mm friction fit batt by name. Contact your Knauf Insulation representative or visit your local distributor today.

## Build on us.

# Folded batt designed for full-height coverage

On today's fast moving job-site, installers face tighter timelines, limited on-site space, and increasing pressure to deliver consistent workmanship.

Folded batts address these challenges by offering a **job-ready format that streamlines handling installation**, helping teams move **faster, cleaner and more confidently through partition wall insulation tasks**.



## INSTALL IN A FEW EASY STEPS



### **Prepare the tools**

Ensure all necessary tools are ready for the batt installation.



### **Unpack and energise the batt**

Carefully unpack and fully unfold the batt, ensuring it is prepared for installation. Energise by bouncing batt on its side.





### **SPEEDY HANDLING**

Pre-sized to wall height - the folded format allows for easy handling and unfolding, minimising preparation time and reducing labour, especially in standard spaces.



### **PRECISION AND FIT**

Manufactured to precise, standard dimensions, folded batts ensure an accurate fit within local metal frame standard. This precision simplifies installation and contributes to consistent insulation performance.



### **INSTALLER COMFORT**

Made with ECOSE® technology for low dust and less itch comfort, designed with installers in mind.



### **FRICION FIT FOR EASY INSTALLATION**

Folded batts utilise a friction fit to stay firmly in place within cavities – eliminating the need for insulation pins. This stability ensures consistent thermal and acoustic performance without sagging.



### **EASY TO HANDLE AND STORE**

Folded batts arrive in a compressed, folded format that takes up significantly lesser space. The compressed packaging improves transport efficiency and simplifies material handling, especially in space-constrained job sites.



### **MINIMISED RISK OF OVERCUTTING**

Pre-measured and folded, these batts reduce material waste by minimising the need for cutting and the risk of overcutting during installation.



STANDARD BATT

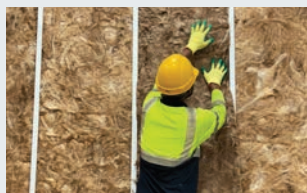


FOLDED BATT

**UP TO 2.25 X LONGER**

#### **Align with stud cavity**

Align the batt with cavity between metal studs.



#### **Friction fit and precise**

Fit the batt into the stud, top down, neatly fitting into the cavity and no need for any pins.



#### **Rapid and firm install**

Install the remaining batts quickly and ensure they are firmly in place, to prevent any sagging.

# Product Range:

## Knauf Insulation Partition Folded Batt / Batt / Roll



### APPLICATION



Knauf Insulation Partition Folded Batt / Batt / Roll with ECOSE® Technology will absorb the transfer of unwanted sound from outside to inside the building. In addition to sound absorption, it will improve the thermal comfort and energy efficiency of the building and stay at a comfortable temperature all year round.

### SPECIFICATIONS



#### Knauf Insulation Partition Folded Batt

Product Code	Density (kg/m <sup>3</sup> )	Thickness (mm)	Thermal Conductivity* <sup>①</sup> (W/mK)	R-Value (m <sup>2</sup> K/W)	Width (mm)	Length (mm)	Area per pack (m <sup>2</sup> )	Pieces per pack
879366	16	50	0.0366	1.36	610	2,300	16.8	12
864388	16	50	0.0366	1.36	610	2,700	19.8	12



#### Knauf Insulation Partition Batt

Product Code	Density (kg/m <sup>3</sup> )	Thickness (mm)	Thermal Conductivity* <sup>①</sup> (W/mK)	R-Value (m <sup>2</sup> K/W)	Width (mm)	Length (mm)	Area per pack (m <sup>2</sup> )	Pieces per pack
864384	16	50	0.0366	1.36	610	1,200	17.6	24
864382	24	50	0.0339	1.47	610	1,200	12.4	17
864300	32	50	0.0326	1.53	610	1,200	10.3	14

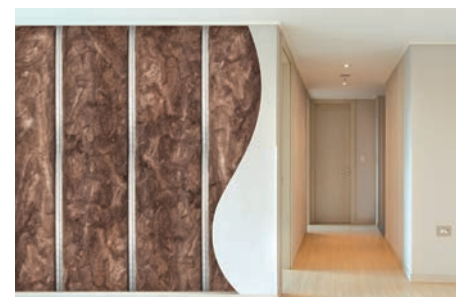


#### Knauf Insulation Partition Roll

Product Code	Density (kg/m <sup>3</sup> )	Thickness (mm)	Thermal Conductivity* <sup>①</sup> (W/mK)	R-Value (m <sup>2</sup> K/W)	Width (mm)	Length (mm)	Area per pack (m <sup>2</sup> )	Pieces per pack
853942	16	50	0.0366	1.36	600	15,000	18.0	2

① In accordance with Clause 4.2.1 (b) of Malaysian standard MS1020 (Thermal insulation products for buildings - factory made mineral wool products), thermal resistance and thermal conductivity values shall be expressed with three significant figures.

\* Thermal conductivity 20°C λ Value (W/mK). All dimensions are nominal.



Knauf Insulation glasswool products **meet stringent performance standards** and are **certified by industry recognised bodies** to give confidence for use in buildings.

## ENHANCED QUALITY ASSURANCE



### ISO 9001: QUALITY MANAGEMENT CERTIFICATION

All of our products are made within the ISO 9001 quality management system ensuring that we deliver consistent performance, quality and service across our entire product range.



### ILAC MUTUAL RECOGNITION ARRANGEMENT

Knauf Insulation's laboratory in Malaysia is accredited under the ILAC Mutual Recognition Arrangement (ILAC MRA), demonstrating its technical competency in accordance with MS ISO/IEC 17025:2017, on thermal conductivity measurement.



This accreditation ensures the consistent delivery of technically valid test results and calibrations from the laboratory.

## NO HARMFUL CHEMICALS

**Declare.**



### CERTIFIED DECLARE RED LIST FREE

The Declare label on our products demonstrates our commitment to transparency and is provided for products which declare 100% of their ingredients.

The Red List Free label confirms that no ingredients are added to our products which are on the Living Building Challenge (LBC) Red List of "worst in class" materials, chemicals and elements known to pose risks to human health.

## BEST-IN-CLASS LOW EMISSIONS FOR OPTIMUM INDOOR AIR QUALITY



### EUROFINS GOLD CERTIFICATE FOR INDOOR AIR COMFORT

Our products have been awarded the Eurofins Gold Certificate for Indoor Air Comfort which is designed to demonstrate products with the best-in-class low levels of Volatile Organic Compound (VOC) emissions.

## LOW ENVIRONMENTAL IMPACT



### GLOBAL GREENTAG<sup>CERT™</sup> GREENRATE<sup>™</sup> LEVEL A CERTIFIED

Knauf Insulation glasswool is the first glasswool insulation in Australia to have GreenRate<sup>™</sup> Level A certification, demonstrating they meet the toughest standards for health, eco performance and safety; and are also eligible for a range of credits within the GreenStar building rating scheme.



### ISO 14001: ENVIRONMENTAL MANAGEMENT

All of our products are manufactured in accordance with the ISO 14001 Environmental Management system, demonstrating our commitment to minimise our impact on the environment.



### ISO 50001: ENERGY MANAGEMENT

All of our products are manufactured in accordance with the ISO 50001 Energy Management system, demonstrating our commitment to conserving resources and minimising the impact of our processes through efficient energy management.

## BIO-SOLUBLE AND SAFE TO USE



### EUCEB CERTIFIED

All of our products are EUCEB certified demonstrating that they are bio-soluble and are safe to use.



### ISO 45001: OH&S MANAGEMENT

All of our products are manufactured in accordance with the ISO 45001 Occupational Health & Safety Management system, demonstrating our commitment to worker health & safety.

## NATIONAL PRODUCT CERTIFICATION AND ACHIEVEMENTS



To learn more scan the QR codes or visit [www.knauf.com](http://www.knauf.com).



## ADVANCED TECHNOLOGY



### ECOSE<sup>®</sup> TECHNOLOGY

Less upfront embodied carbon than traditional binders



### TWINTeCH<sup>®</sup> TECHNOLOGY

Advanced dual-forming provides a high quality smooth finish on both sides.



### DRITHERM<sup>®</sup> TECHNOLOGY

A water-repellent additive designed to resist moisture and enhance durability in damp and humid conditions.

## MANUFACTURED BY

### Knauf Insulation Sdn Bhd

PL0 157, Jalan Teruntum 4, Tanjung Langsat Industrial Area,  
81700 Pasir Gudang, Johor

Company registration no: 201401006359



+60 7-838 1000



info.my@knaufinsulation.com



www.knauf.com

## SPECIFIED AND DISTRIBUTED BY

### Knauf Sdn. Bhd.

Lot 606, Jalan Lagoon Selatan,  
47500 Subang Jaya,  
Selangor Darul Ehsan, Malaysia



© 2026 Knauf Insulation

All rights reserved, including those of photomechanical reproduction and storage in electronic media. Extreme caution was observed when putting together and processing the information, texts and illustrations in this document. Nevertheless, errors cannot quite be ruled out. The publisher and editors cannot assume legal responsibility or any liability whatever for incorrect information and the consequences thereof. The publisher and editors will be grateful for improvement suggestions and details of possible errors pointed out.

KIMV04241410BR<sup>(v2.12)</sup>

**Build on us.**