

## Supafil® Party Wall

September 2025

Build on us.



### Description

Supafil® Party Wall is a glass mineral blowing wool, developed for use in masonry separating (party) walls.

It is designed to be used as part of a full-fill solution, thus preventing party wall thermal bypass and helping to achieve zero effective U-value within SAP.

### Benefits

- › Holds an Agrément certificate by the BBA under reference number 14/5176.
- › Suitable for use with a range of new-build constructions registered in the Robust Details Handbook reducing the need for on-site acoustic testing.
- › Its blue colour provides visual identification and assurance that the correct product is being used for the right application.
- › Designed to fully fill the party wall cavity to prevent party wall thermal bypass, contributing towards a zero effective U-value.
- › Installed by 'Approved Supafil® Installers', using specific blowing machines, hoses and nozzles as part of a system.
- › Manufactured from mineral wool which provides the best levels of sound absorption and reduction compared to other mainstream insulants to reduce the sound transfer between dwellings.



NON-COMBUSTIBLE  
INSULATION

# Supafil® Party Wall

## Technical Specifications

### SUPAFIL® PARTY WALL

Weight per bale (kg)	Installed density (kg/m <sup>3</sup> )	Settlement	GWP A1-A3 (kgCO <sub>2</sub> e/m <sup>2</sup> )	GWP A1-C4 (kgCO <sub>2</sub> e/m <sup>2</sup> )	GWP A1-A3 (kgCO <sub>2</sub> e/kg)	GWP A1-C4 (kgCO <sub>2</sub> e/kg)	Product code
17.6	18	S1	1.33	1.58	0.74	0.88	2441359

All dimensions are nominal.  
Available via approved contractors.

The declared unit is 1m<sup>2</sup> of Supafil® Party Wall blowing wool with R-value of 2.50 m<sup>2</sup>K/W (for a thickness of a 100mm and a declared lambda of 0.040 W/mK).

### SUPAFIL® PARTY WALL

W/m <sup>2</sup> K	Party Wall Construction
0.0*	Solid
0.5	Unfilled cavity with no effective edge sealing
0.2	Unfilled cavity with effective edge sealing around all exposed edges and in line with insulation layers in abutting elements
0.0*	Fully filled cavity (e.g. by using <b>Supafil® Party Wall</b> ), and with effective edge sealing around all exposed edges and in line with insulation layers in abutting elements

# Supafil® Party Wall

## Technical Specifications

### ROBUST DETAIL SEPARATING WALLS AND PARTY WALL BYPASS SOLUTIONS - SUPAFIL® PARTY WALL

Robust Detail Wall Type	Minimum Cavity Width (mm)	Block Type	Block Density (kg/m <sup>3</sup> )	Wall Finish	Parge coat	Zero U-value
E-WM-1	75	Dense	1850 to 2300	Wet plaster	Yes	Yes
E-WM-2	75	Light aggregate	1350 to 1600	Wet plaster	Yes	Yes
E-WM-3	75	Dense	1850 to 2300	Plasterboard (8kg/m <sup>2</sup> ) on dabs	Yes	Yes
E-WM-4	75	Light aggregate	1350 to 1600	Plasterboard (8kg/m <sup>2</sup> ) on dabs	Yes	Yes
E-WM-5	75	Besblock 'Star Performer'	1528	Plasterboard (8kg/m <sup>2</sup> ) on dabs on cement render	Yes	Yes
E-WM-6	75	Aircrete	600 to 800	Plasterboard (8kg/m <sup>2</sup> ) on dabs on cement render	Yes	Yes
E-WM-10	75	Aircrete - thin joint	600 to 800	Plasterboard (8kg/m <sup>2</sup> ) on dabs on cement render	Yes	Yes
E-WM-11	100	Light aggregate (or nominated hollow or cellular blocks)	1350 to 1600	Plasterboard (8kg/m <sup>2</sup> ) on dabs	Yes	Yes
E-WM-12	75	Plasmor Aglite Ultima	1050	Plasterboard (8kg/m <sup>2</sup> ) on dabs	Yes	Yes
E-WM-13	75	Aircrete - thin joint	600 to 800	Plasterboard (8kg/m <sup>2</sup> ) on dabs on cement render	Yes	Yes
E-WM-16	100	Dense	1850 to 2300	Plasterboard (9.6kg/m <sup>2</sup> ) on dabs	Yes	Yes
E-WM-18	100	Dense	1850 to 2300	Wet plaster	Yes	Yes
E-WM-19	100	Dense or light aggregate (or nominated hollow or cellular blocks)	1350 to 1600 or 1850 to 2300	Plasterboard on dabs on cement render	Yes	Yes
E-WM-21	100	Light aggregate	1350 to 1600	Wet plaster	Yes	Yes
E-WM-26	100	Besblock 'Star Performer'	1528	Plasterboard (10kg/m <sup>2</sup> ) on dabs	No	Yes
E-WM-28	100	Light aggregate	1350 to 1600	Plasterboard (8kg/m <sup>2</sup> ) on dabs	No	Yes
E-WM-30	100	Aircrete - standard and thin joint	600 to 800	Plasterboard (8kg/m <sup>2</sup> ) on dabs	No	Yes
E-WM-31	100	H+H - Celcon Elements - thin joint	575	Plasterboard (8kg/m <sup>2</sup> ) on dabs	No	Yes

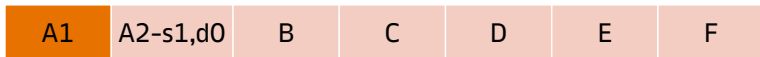
# Supafil® Party Wall

## Performance

THERMAL (W/mK)

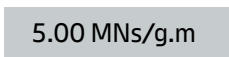


FIRE CLASSIFICATION

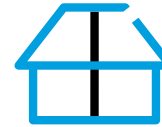


Euroclass reaction to fire classification

VAPOUR RESISTIVITY

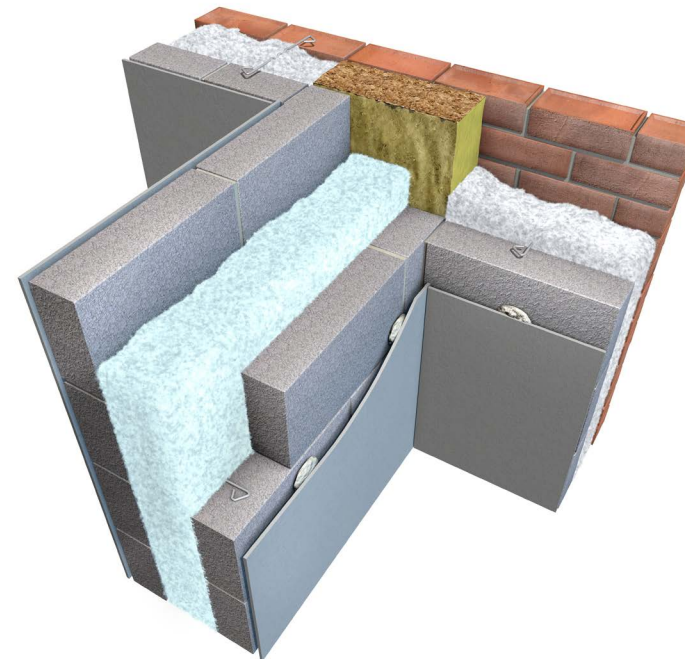


## Applications



Separating (Party) walls  
Blown-In

## Typical Build-Up



## Certification, accreditations and industry standards



## Application

Supafil® Party Wall is designed for use in new or existing masonry cavity party walls to reduce the effects of noise between dwellings and prevent party wall thermal bypass.

Party wall thermal bypass is a process whereby heat is lost through a party wall cavity due to air exchange between the party wall cavity and the external environment (chimney effect).

Supafil® Party Wall has been shown in independent field trials to effectively eliminate the air movement that causes party wall thermal bypass in both new and existing buildings without compromising acoustic performance in existing homes, and is suitable for use with a range of Robust Details in new build homes.

## Standards and certification

Supafil® Party Wall has an Agrément certificate by the BBA under reference number 14/5176 for use in internal separating masonry party walls of existing domestic buildings with nominal cavity widths not less than 65mm, using internal or external filling methods. In the latter case, installation is restricted to a maximum of 10 metres total length of cavity wall, when filled from both ends.

Supafil® Party Wall has a product declaration made in conformity with the requirements of BS EN 13162:2012+A1:2015 and are manufactured in accordance with ISO 50001:2018 Energy Management Systems, ISO 14001:2015+A1:2024 Environmental Management Systems, ISO 45001:2023+A1 Occupational Health and Safety Management Systems, and ISO 9001:2015+A1:2024 Quality Management Systems.

All of our mineral wool products are made of non-classified fibres and are certified by EUCEB. EUCEB (European Certification Board of Mineral Wool Products - [www.euceb.org](http://www.euceb.org)) is a voluntary initiative by the mineral wool industry. It is an independent certification authority that guarantees that products are made of fibres which comply with the exoneration criteria for carcinogenicity (Note Q) of the Regulation (EC) 1272/2008.

Supafil® products carry the CCPI mark, helping to provide assurance to product users that the product information for these products is clear, accurate, accessible, up-to-date and unambiguous. The CCPI is playing a pivotal role in driving up standards in product information as the construction industry adapts to a new and improved building safety regime.

## Thermal Modelling

The U-value of a proprietary built element (rainscreen façade/ masonry cavity wall/garage soffit etc.) or system is dependent on the material properties and the degree of thermal bridging in the system.

Calculations should be created using 2D or 3D modelling programs which comply with the methodologies detailed in BS EN ISO 6946:2017 or BS EN ISO 10211:2017 and using guidance from BR443:2019.

We offer simplified calculations to BS EN ISO 6946:2017 and where required numerically modelled U-value calculations using software that is compliant with BS EN ISO 10211:2017.

## System Testing

Knauf Insulation maintains declared product characteristics and qualities which are defined in detail in its Declaration of Performances (DoPs) and product literature. The product literature also includes information relating to Knauf Insulation's requirements and recommendations for installation of its products when being used as part of a system.

Any party using, or planning to use, our products in a system (with or without system testing) where performance may be dependent on product characteristics not declared on our DoPs or our product literature, must contact our Technical Support Team.

Knauf Insulation will not accept liability for any failure in system performance due to product characteristics not declared on DoPs or product literature, or not agreed in a Service Level Agreement. In such an event, any warranty given in relation to those products will be invalidated.

## Real Performance

Supafil® Party Wall is an in-situ formed product. This means that it takes the shape of the void/cavity in which it is formed and therefore naturally accommodates the actual dimensions and variations in spaces to be filled.

The methods specified in the product installation manuals and confirmed in the Agrément Certificate from the BBA result in the correct density and a complete fill being achieved. This means there are no voids in the Supafil® Party Wall or between the Supafil® Party Wall and the substrate or the edges of the cavities.

Achieving a complete fill supports real thermal performance by eliminating cold bridging due to gaps in the insulation and extra heat loss in the structure by air movement around the insulation from the warm surface to the cold surface.

## Moisture Resistance

Supafil® Party Wall is manufactured with a water-repellent additive, meaning that the physical and chemical characteristics of the fibres are unaltered by wetting. Therefore, the thermal properties of Supafil® Party Wall are not affected by exposure to moisture and the product will perform as expected once dry and undamaged.

## Durability

Supafil® Party Wall is odourless, rot proof, non-hygroscopic, does not sustain vermin and will not encourage the growth of fungi, mould or bacteria. The product will have a life equivalent to that of the structure in which it is incorporated.

# Supafil® Party Wall

## Sustainability

Supafil® Party Wall is a virgin glass mineral blowing wool which generates low levels of dust and VOCs and which has been awarded the Eurofins GOLD Certificate for 'Indoor Air Comfort'.

All our mineral wool products have been awarded the DECLARE 'Red List Free' label. The Declare label is a third-party accreditation and is similar to a food nutrition label but for building products; it is a straightforward ingredient list and allows product transparency disclosure because it identifies where a product comes from and what it is made of. Declare 'Red List Free' certifies that there is no harmful chemical from the red list in our products.

Our glass mineral wool is made with up to 80% recycled content (including glass from windows, bottles and jars).

Supafil® Party Wall contains no ozone-depleting substances or greenhouse gases. The overall environmental performance of our products is reported in their EPDs (Environmental Product Declarations) which are available on our website. EPDs are available for all our products in accordance with ISO 14025:2023, ISO 21930:2017 and EN 15804+A2:2019.

We have received the BES6001(v4.0) 'Very Good' rating for all our mineral wool in our three plants, which proves that our products are made with constituent materials that are responsibly sourced.

Our 3-tier industry-leading compression-packaging technology allows us to load more product per pack or pallet, and therefore onto each truck that leaves our factories. This means less packaging used per m<sup>2</sup> of insulation, fewer vehicles on our roads, so less associated CO<sub>2</sub> emissions. It also means less transport, handling and storage space required for our customers.

Our individual products and the pallets they sit on are wrapped in low-density polyethylene (LDPE4) plastic, which is made of 30-50% (depending on the supplier) recycled plastic content and is fully recyclable.

## Handling & Storage

Supafil® Party Wall should be stored properly and handled in such a way as to ensure that the product remains clean and undamaged.

The polyethylene packs / shrink-wrapped pallets used for the supply of Supafil® Party Wall are designed for short-term protection only. For longer term protection on site, the product should either be stored indoors or under cover and off the ground. Supafil® Party Wall should not be left permanently exposed to the elements.

If the main hood is removed or damaged, the remaining packs should be kept under cover indoors or protected from the elements by a weatherproof cover. In coastal locations where weather is more extreme and bird damage is more common, use additional covering or store indoors.

The product must be protected from prolonged exposure to sunlight and stored dry. If damaged, the product should be discarded. Damaged, contaminated or wet products must not be used.

## Colour

To ensure that the correct product is used, and that the desired thermal and acoustic performance is achieved, Supafil® Party Wall is manufactured with a blue colour for easy on-site identification and compliance with Robust Details.

## Knauf Insulation Ltd

Stafford Road, St.Helens, Merseyside, WA10 3LZ Customer Service: 01744 766 766

All rights reserved, including those of photomechanical reproduction and storage in electronic media. Extreme caution was observed when putting together and processing the information, text and illustrations in this document. Nevertheless, errors cannot be completely ruled out. The publisher and editors cannot assume legal responsibility or any liability for incorrect information and consequences thereof. The publisher and editors will be grateful for improvement suggestions and details of possible errors pointed out. For the most up-to-date document versions and product information, please always refer to our website.

KINE1489DAT-V0925

**Build on us.**